

Table 1 – Drilling Results - Comtois NW Gold Occurrence (Comtois Property)

COMTOIS NW GOLD OCCURRENCE - NORTH TREND							
Drill Hole	Section	From (m)	To (m)	Core length	Gold (g/t Au)	High grade interval	Weighted average
COM-09-288	2375 E	81.2	82.0	0.8	0.8	0.8 g/t Au over 0.8m	0.4 g/t Au over 2.3m
		82.0	83.5	1.5	0.2		
		91.7	92.2	0.5	0.2		
		92.2	92.8	0.6	0.1	0.2 g/t Au over 2.2m	
		92.8	93.3	0.5	0.3		
		93.3	93.9	0.6	0.3		
		106.5	107.0	0.5	0.1	0.1 g/t Au over 1.7m	
		107.0	107.5	0.5	0.2		
		107.5	108.2	0.7	0.1		
COM-10-373	2450 E	35.0	36.0	1.0	0.2	0.5 g/t Au over 5.0m	
		36.0	37.0	1.0	0.3		
		37.0	38.0	1.0	0.4		
		38.0	39.0	1.0	1.1	1.1 g/t Au over 1.0m	
		39.0	40.0	1.0	0.7	0.3 g/t Au over 33.9m	
		52.1	52.6	0.5	0.4		
		52.6	53.1	0.5	3.7		3.7 g/t Au over 0.5m
		53.1	54.1	1.0	0.1	0.3 g/t Au over 33.9m	
		54.1	55.1	1.0	0.1		
		55.1	56.1	1.0	0.1		
		56.1	57.1	1.0	0.2		
		57.1	58.1	1.0	0.4		
		58.1	59.1	1.0	0.1		
		59.1	60.1	1.0	0.1		
		60.1	60.7	0.6	0.2		
		60.7	61.7	1.0	0.5		
		61.7	62.7	1.0	0.1		
		62.7	63.2	0.5	0.2		
		63.2	63.9	0.7	0.2		
		63.9	64.4	0.5	0.1		
		64.4	65.4	1.0	0.2		
		65.4	66.0	0.6	0.7		
		66.0	67.0	1.0	0.4		
		67.0	67.5	0.5	0.2		
		67.5	68.1	0.6	0.0		
		68.1	69.1	1.0	0.1		
		69.1	70.1	1.0	0.1		
		70.1	71.1	1.0	0.2		
		71.1	71.6	0.5	0.5		
		71.6	72.4	0.8	0.6		
		72.4	73.4	1.0	0.1		
		73.4	74.3	0.9	0.0		
		74.3	75.3	1.0	0.2		
75.3	76.3	1.0	0.3				
76.3	76.9	0.6	0.1				

		76.9	77.9	1.0	0.2		
		77.9	78.9	1.0	0.1		
		78.9	79.9	1.0	0.1		
		79.9	80.9	1.0	0.8		
		80.9	81.9	1.0	0.1		
		81.9	82.9	1.0	0.1		
		82.9	83.9	1.0	0.6		
		83.9	84.9	1.0	0.4		
		84.9	85.4	0.5	1.2	1.2 g/t Au over 0.5m	
		85.4	86.0	0.6	0.2		
		138.9	139.9	1.0	0.2		
		139.9	140.9	1.0	0.7		
		140.9	141.9	1.0	0.2		0.5 g/t Au over 3.5 m
		141.9	142.4	0.5	1.2	1.2 g/t Au over 0.5m	
		175.2	176.1	0.9	0.5		
		176.1	176.6	0.5	1.5	1.5 g/t Au over 0.5m	0.5 g/t Au over 2.4m
		176.6	177.6	1.0	0.1		
COM-11-692A	2400 E	104.0	104.5	0.5	0.6		
		104.5	105.0	0.5	2.6	2.6 g/t Au over 0.5m	1.6 g/t Au over 1.0m
COM-11-699	2425 E	191.0	191.5	0.5	0.2		
		191.5	192.3	0.8	0.2		
		192.3	193.0	0.7	0.4		
		193.0	193.5	0.5	0.1		
		193.5	195.0	1.5	0.1		
		195.0	196.0	1.0	0.1		
		196.0	197.0	1.0	0.0		
		197.0	198.0	1.0	0.5		
		198.0	198.7	0.7	1.5		
		198.7	199.3	0.6	0.7		
		199.3	199.8	0.5	0.9		
		199.8	200.5	0.7	7.2	7.2 g/t Au over 0.7m	
		200.5	201.0	0.5	0.3		
		201.0	202.0	1.0	0.2		
COM-12-864	2525 E	82.0	83.0	1.0	3.7	3.7 g/t Au over 1.0m	
		83.0	84.0	1.0	0.1		1.9 g/t Au over 2.0m
COM-12-865	2450 E	70.7	72.1	1.4	4.8	4.8 g/t Au over 1.4m	
COM-12-868	2475 E	213.9	214.4	0.5	1.2	1.2 g/t Au over 0.5m	
		214.4	215.4	1.0	0.1		0.5 g/t Au over 1.5m

COMTOIS NW GOLD OCCURRENCE - SOUTH TREND

Drill Hole	Section	From (m)	To (m)	Core length	Gold (g/t Au)	High grade interval	Weighted average
COM-12-870	2225 E	41.8	42.9	1.1	0.1		
		42.9	44.1	1.2	1.1	1.1 g/t Au over 1.2m	
		44.1	45.0	0.9	0.0		
		45.0	46.0	1.0	0.2		
		46.0	46.5	0.5	0.1		0.3 g/t Au over 4.7m

COM-12-872	1850 E	157.9	159.0	1.1	0.3		26.3 g/t Au over 3.3m
		159.0	160.2	1.2	71.7	71.7 g/t Au over 1.2m	
		160.2	161.2	1.0	0.3		
		205.3	206.3	1.0	5.7	5.7 g/t Au over 1.0m	1.8 g/t Au over 4.0m
		206.3	207.3	1.0	0.2		
		207.3	208.3	1.0	0.7		
		208.3	209.3	1.0	0.5		
		232.3	233.4	1.1	0.6		
		233.4	234.1	0.7	3.8	3.8 g/t Au over 0.7m	0.6 g/t Au over 12.4m
		234.1	234.8	0.7	0.2		
		234.8	235.6	0.8	0.3		
		235.6	237.0	1.4	0.1		
		237.0	238.1	1.1	0.1		
		238.1	239.1	1.0	0.3		
		239.1	240.0	0.9	0.3		
		240.0	241.2	1.2	0.4		
		241.2	242.3	1.1	1.1		
242.3	243.3	1.0	0.7				
243.3	244.7	1.4	0.1				
COM-12-874	1925 E	37.2	38.1	0.9	1.2	0.8 g/t Au over 40.8m	
		38.1	38.6	0.5	2.1		
		38.6	39.2	0.6	1.1		
		39.2	40.2	1.0	0.3		
		40.2	41.2	1.0	0.0		
		41.2	42.2	1.0	0.0		
		42.2	43.7	1.5	0.1		
		43.7	45.0	1.3	0.2		
		45.0	46.2	1.2	0.2		
		46.2	47.6	1.4	0.1		
		47.6	48.4	0.8	0.6		
		48.4	49.4	1.0	0.2		
		49.4	50.4	1.0	0.3		
		50.4	51.5	1.1	0.6		
		51.5	52.8	1.3	0.5		
		52.8	54.0	1.2	0.6		
		54.0	55.5	1.5	0.4		
		55.5	57.0	1.5	0.7		
		57.0	58.0	1.0	1.2		
		58.0	59.0	1.0	0.4		
59.0	60.0	1.0	0.7				
60.0	61.0	1.0	0.4				
61.0	62.0	1.0	0.3				
62.0	63.0	1.0	0.4				
63.0	64.0	1.0	0.1				
64.0	65.0	1.0	0.2				
65.0	66.0	1.0	2.3				
66.0	67.5	1.5	0.3				
67.5	68.7	1.2	0.4				

	68.7	69.7	1.0	0.3		
	69.7	70.6	0.9	0.3		
	70.6	72.1	1.5	4.3	4.3 g/t Au over 1.5m	
	72.1	73.3	1.2	0.1		
	73.3	74.3	1.0	1.2		
	74.3	75.0	0.7	0.7		
	75.0	75.5	0.5	10.1	10.1 g/t Au over 0.5m	
	75.5	76.6	1.1	1.5		
	76.6	78.0	1.4	0.7		

Gold grades (g/t Au) are expressed uncut and over core length.

True width cannot be estimated at this stage because of uncertainties on strike and dip of the different mineralized zones.

Values were rounded at 1 decimal point.

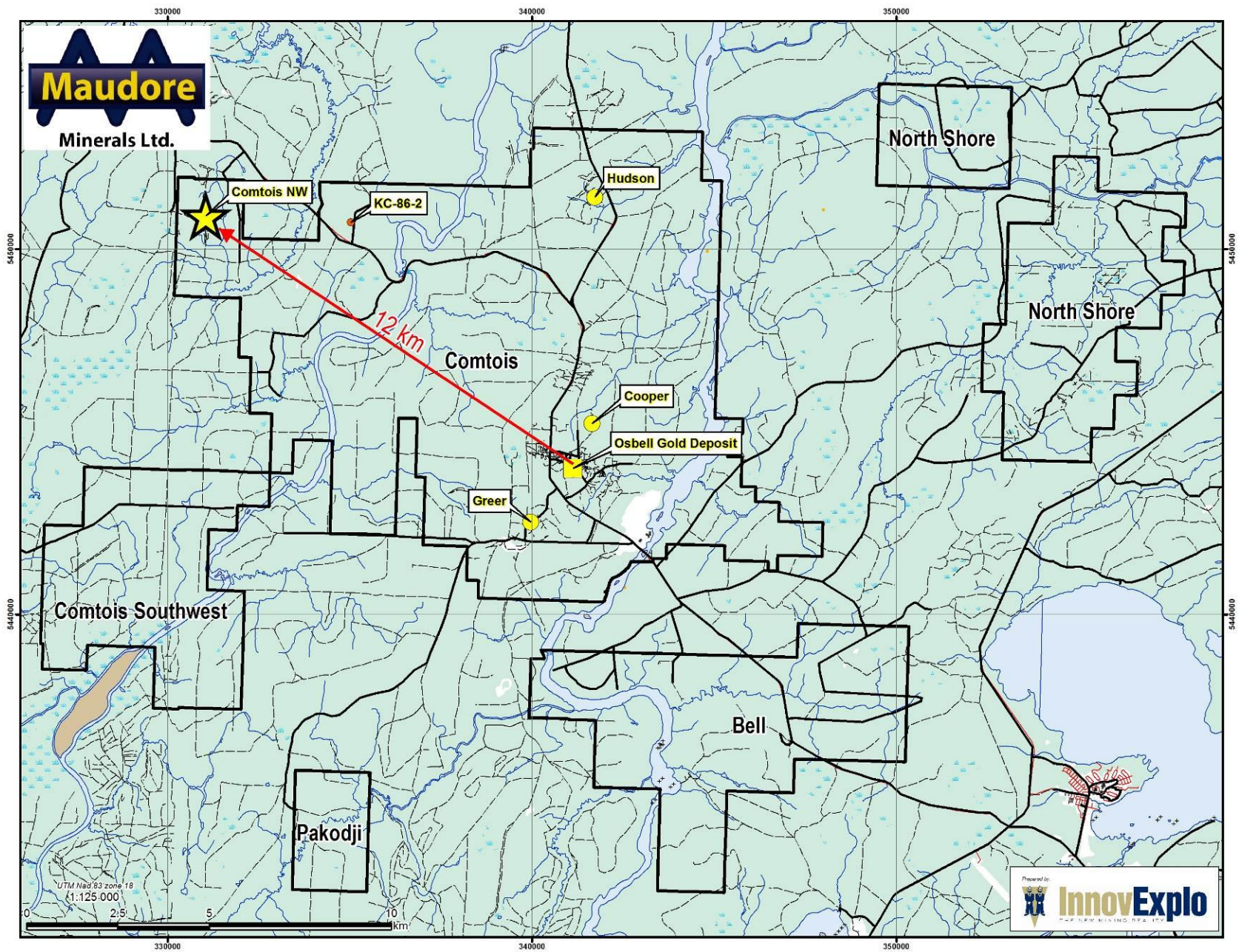


Figure 1. – Comtois Property and Comtois NW Gold Occurrence– Location Map

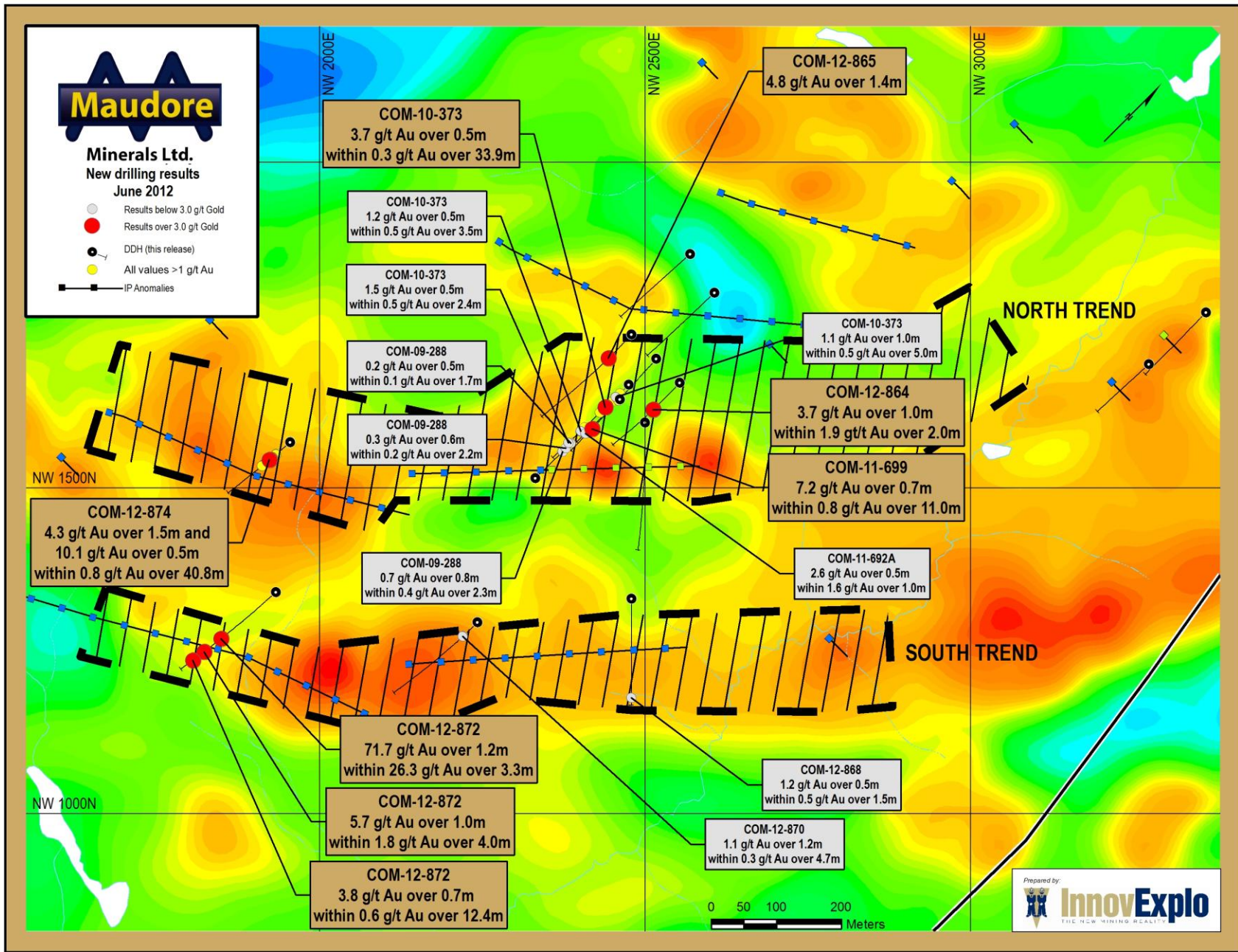


Figure 2. – Comtois NW Gold Occurrence – Drilling Results with Magnetic Total Field in Background