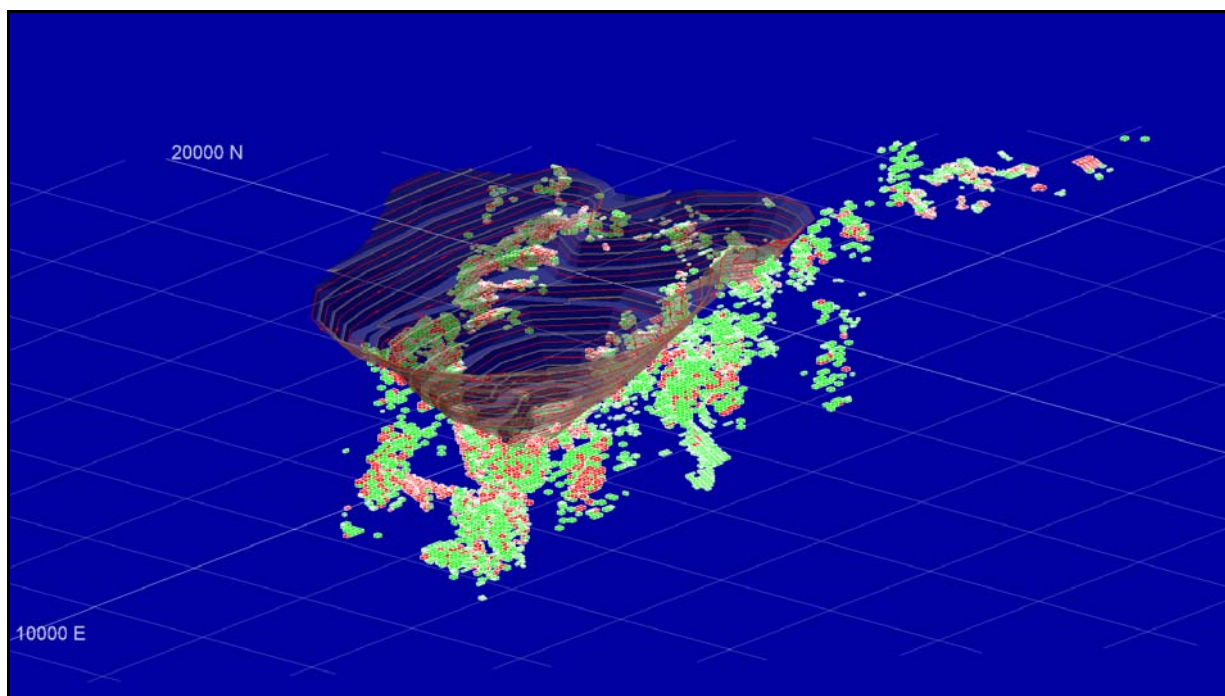


*Intercepts drilled beyond the limit of the ultimate pit following the NW Shear and Main Flat intersection include SBRC744D 42m at 3.9g/t, SBRC745D 24m at 2.7g/t and SBRC746D 38m at 2.6g/t*



*2-3g/t (green) and +3g/t (red) undiluted Measured and Indicated resources outside of the ultimate pit*