

Figure 1: Drill hole location map showing drill intercepts and extent of artisanal workings.

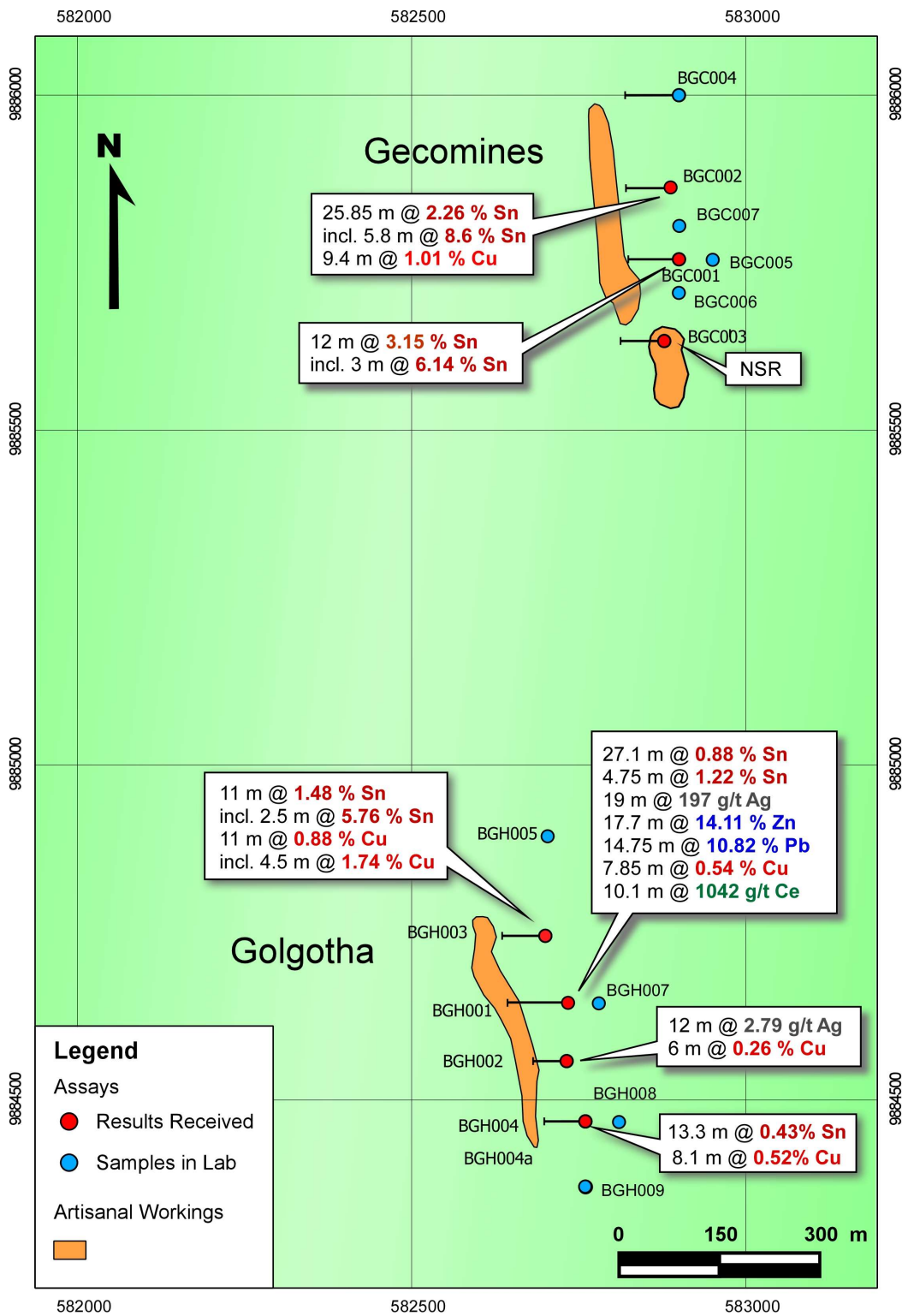


Figure 2: Lead in Soil Anomaly along the Bisie Ridge

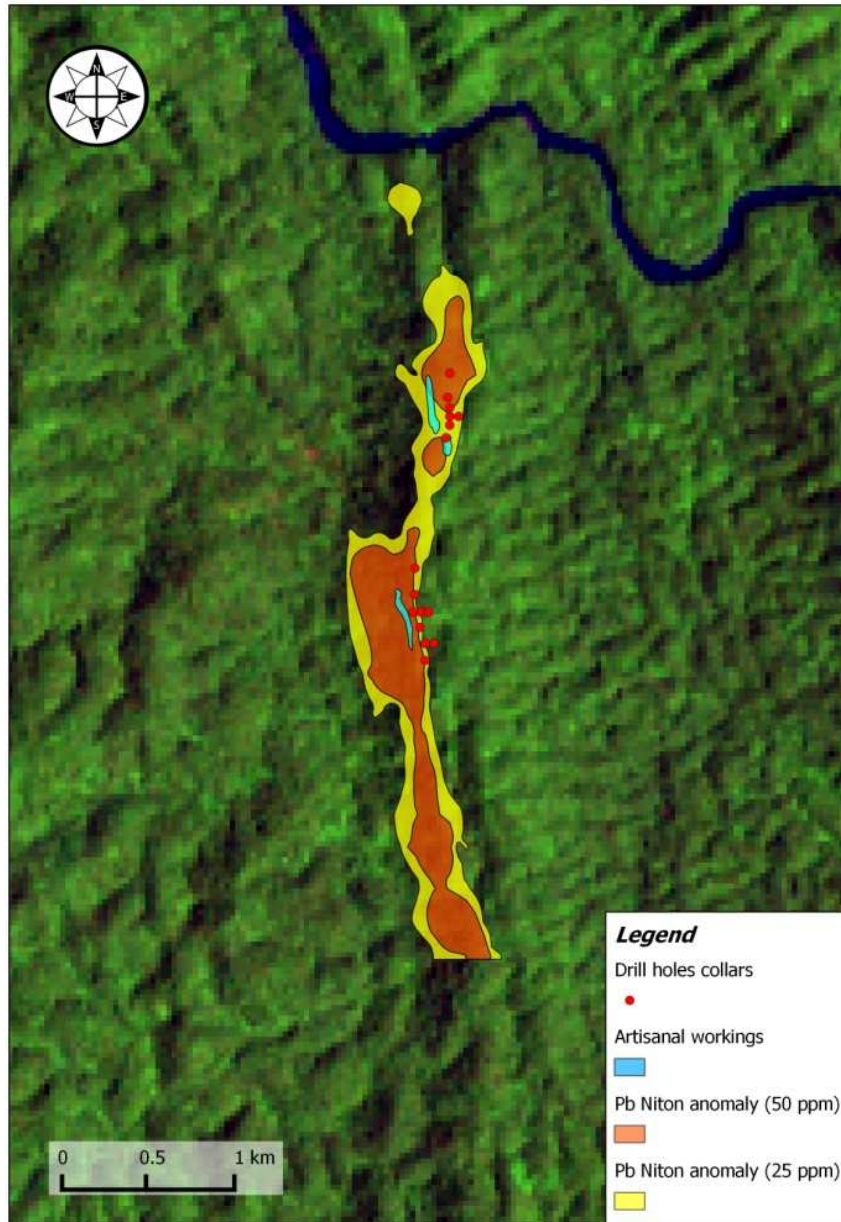


Table 1: Summary of Drill Holes and Significant Intersections Received, Bisie Prospect, DRC

Hole ID	GPS Easting	GPS Northing	EOH	Azim	Incl	Element	From (m)	To (m)	Width (m)	Grade
BGH003	582700	9884745	125.1	270	-60	Sn (%)	71	82	11	1.48
					Incl.	Sn (%)	74.5	77	2.5	5.76
						Cu (%)	72	83	11	0.88
					Incl.	Cu (%)	76	80.5	4.5	1.74
						Cu (%)	90.5	108.5	18	0.35
					Incl.	Cu (%)	91.5	97.1	5.6	0.59
						Ce (g/t)	71	83.6	12.6	707
BGH004A	582762	9884468	120.5	270	-60	Sn (%)	68.7	82	13.3	0.43
					Incl.	Sn (%)	78	82	4	0.76
						Ag (g/t)	56.5	75.5	19	5.5
						Zn (%)	63.5	74.5	11	1.50
						Cu (%)	66.5	79.4	12.9	0.36
					Incl.	Cu (%)	68.4	76.5	8.1	0.52
						Ce (g/t)	94	107.6	13.6	777
BGH004	582760	9884468	69	270	-60	Ag (g/t)	57.5	68.5	11	10.7
					Incl.	Ag (g/t)	59	62.5	3.5	23
						Pb (%)	60	62.5	2.5	1.63
						Zn (%)	60	68	8	2.56
BGC003	582878	9885633	126	270	-60					NSR

Table 2: Summary of Drill Holes and Significant Intersections Previously Released, Bisie Prospect, DRC

Hole ID	GPS Easting	GPS Northing	EOH	Azim	Incl	Element	From (m)	To (m)	Width (m)	Grade
BGH001	582734	9884645	175.5	270	-60	Sn (%)	106.85	133.95	27.1	0.88
					Incl.	Sn (%)	110.65	132.7	22.05	1.02
						Sn (%)	144.8	149.55	4.75	1.22
						Ag (ppm)	61	80	19	197
						Ag (ppm)	110.65	117.5	6.85	3.64
						Pb (%)	61	75.75	14.75	10.82
						Zn (%)	61	78.7	17.7	14.11
					Incl.	Zn (%)	62	75	13	18.08
						Cu (%)	109.65	121	11.35	0.43
					Incl.	Cu (%)	109.65	117.5	7.85	0.54
						Cu (%)	125	136.8	11.8	0.12
						La (g/t)	165.8	171.05	5.25	607.05
						Ce (g/t)	161.9	172	10.1	1042
BGH002	582732	9884558	95.5	270	-60	Sn (%)	90	93	3	0.69
						Ag (g/t)	82	94	12	2.8
						Zn (%)	85	88	3	2.01
						Cu (%)	89	95	6	0.257
BGC001	582900	9885755	147	270	-60	Sn (%)	53	65	12	3.15
						Sn (%)	80	83	3	6.14
						Cu (%)	53	63	10	0.19
BGC002	582890	9885855	130	270	-60	Sn (%)	47.65	73.5	25.85	2.26
					Incl.	Sn (%)	62.5	73.5	11	4.8
					Incl.	Sn (%)	64.2	70	5.8	8.55
						Cu (%)	67	76.4	9.4	1.01
					Incl.	Cu (%)	70	73.5	3.5	2.15