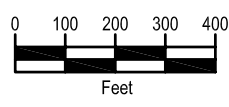


- Conglomerate
- Tertiary Volcanics
- Limestone/Marble
- Hornfels
- Magnetite Skarn
- Calc-silicate Skarn
- Intrusive/Endoskarn
- + 0.3% Cu
- + 1.0% Cu

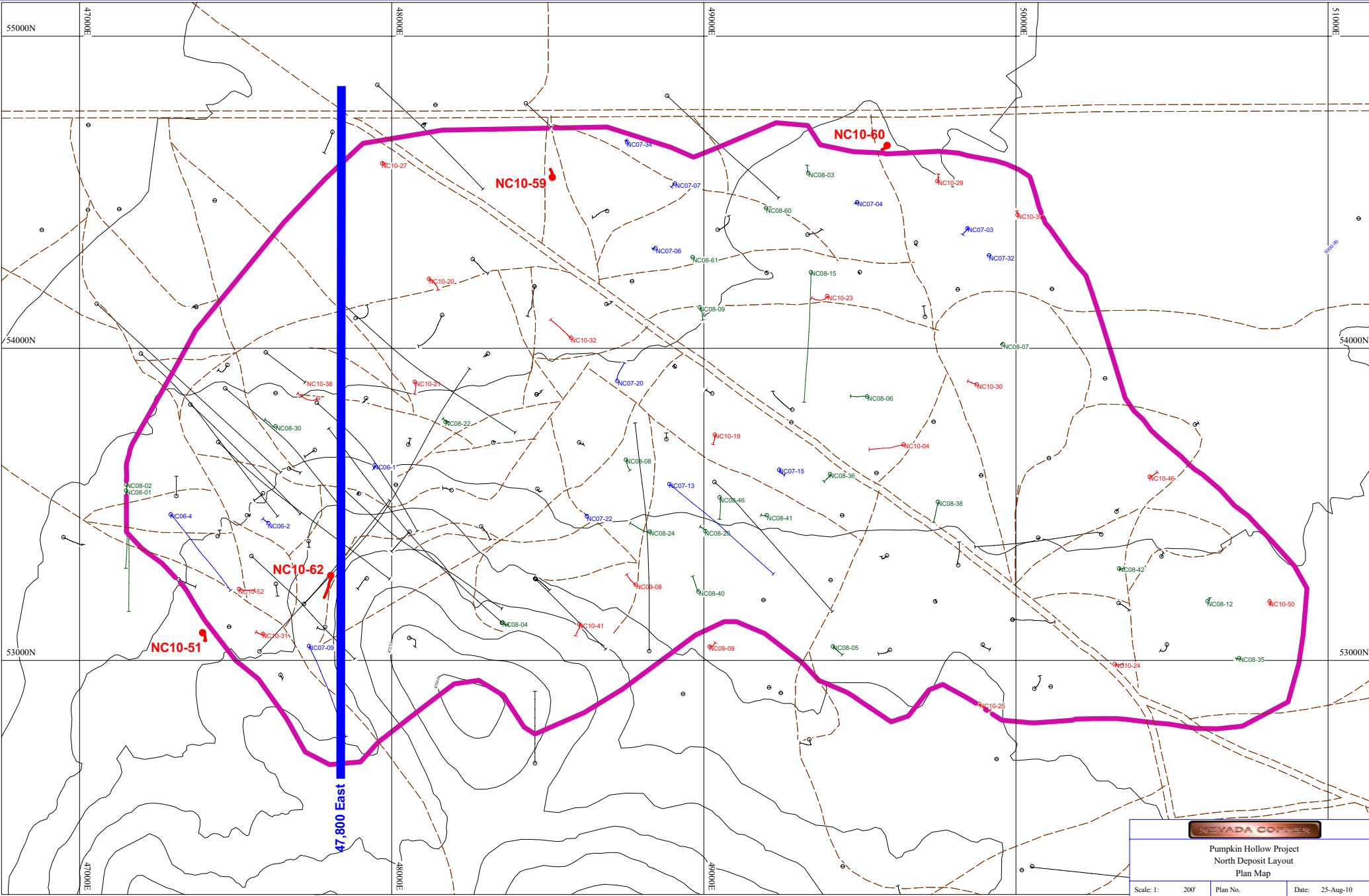


15'
2.2% Cu

Trace of drill hole
Intersected length of mineralization in feet, %Cu

Nevada Copper			
Pumpkin Hollow			
North Deposit - Section 47800 E			
Looking East			
SCALE	1" : 100'	DRAWN	GPH
		CHECKED	GMcNF
DATE	08/26/2010	APPROVED	GMcNF

dh_plan_press_release_01



NEVADA COPPER		
Pumpkin Hollow Project North Deposit Layout Plan Map		
Scale: 1: 200'	Plan No.	Date: 25-Aug-10