

Figure 1 : Long Section of the Cosmo Mine showing the current drilling targets

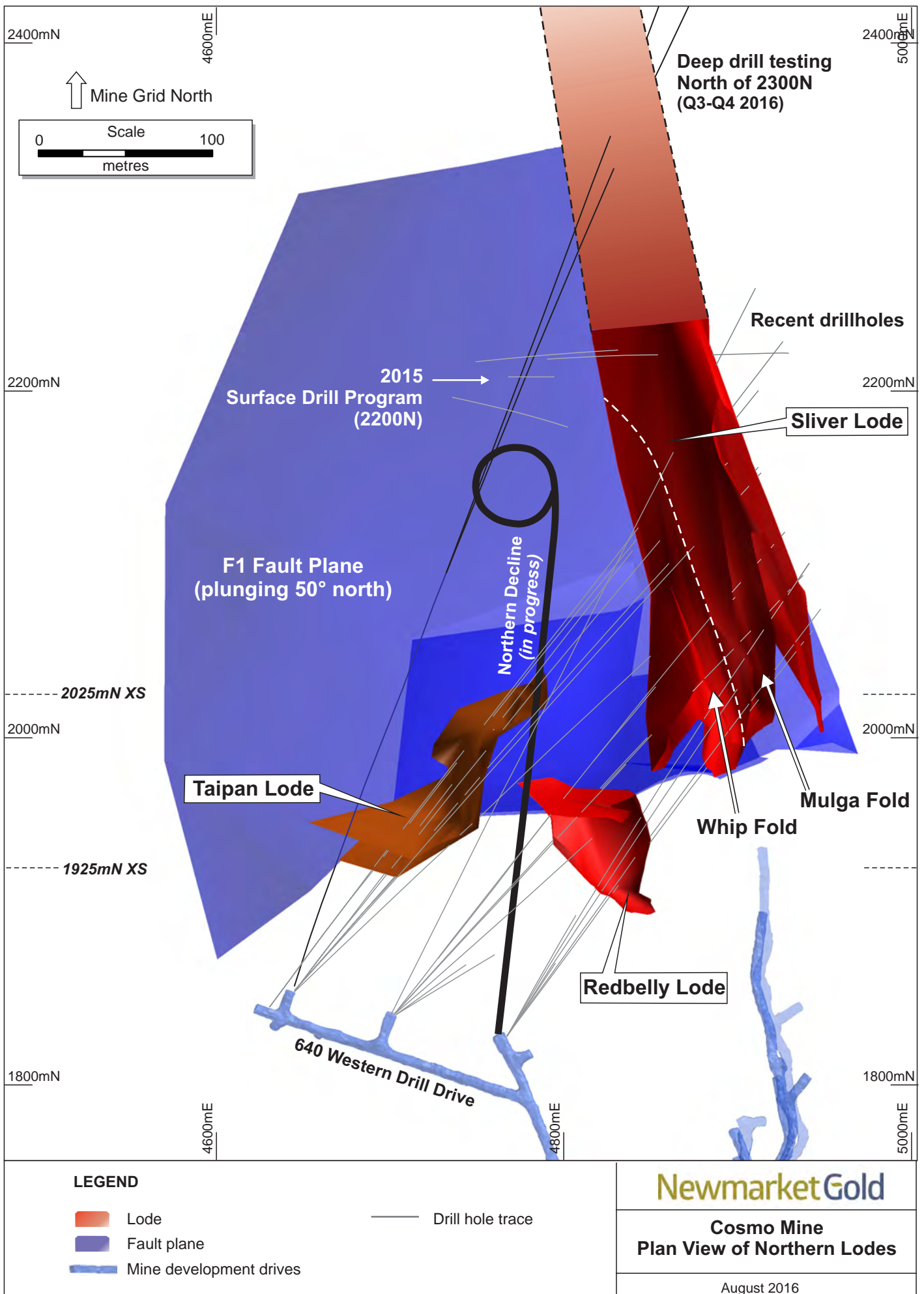


Figure 2 : Plan View showing the Sliver, Redbelly and Taipan Lodes at 655mRL and below with recent drilling from the 640 Western Drill Drive showing how many holes are intersecting two targets when drilling the Sliver.

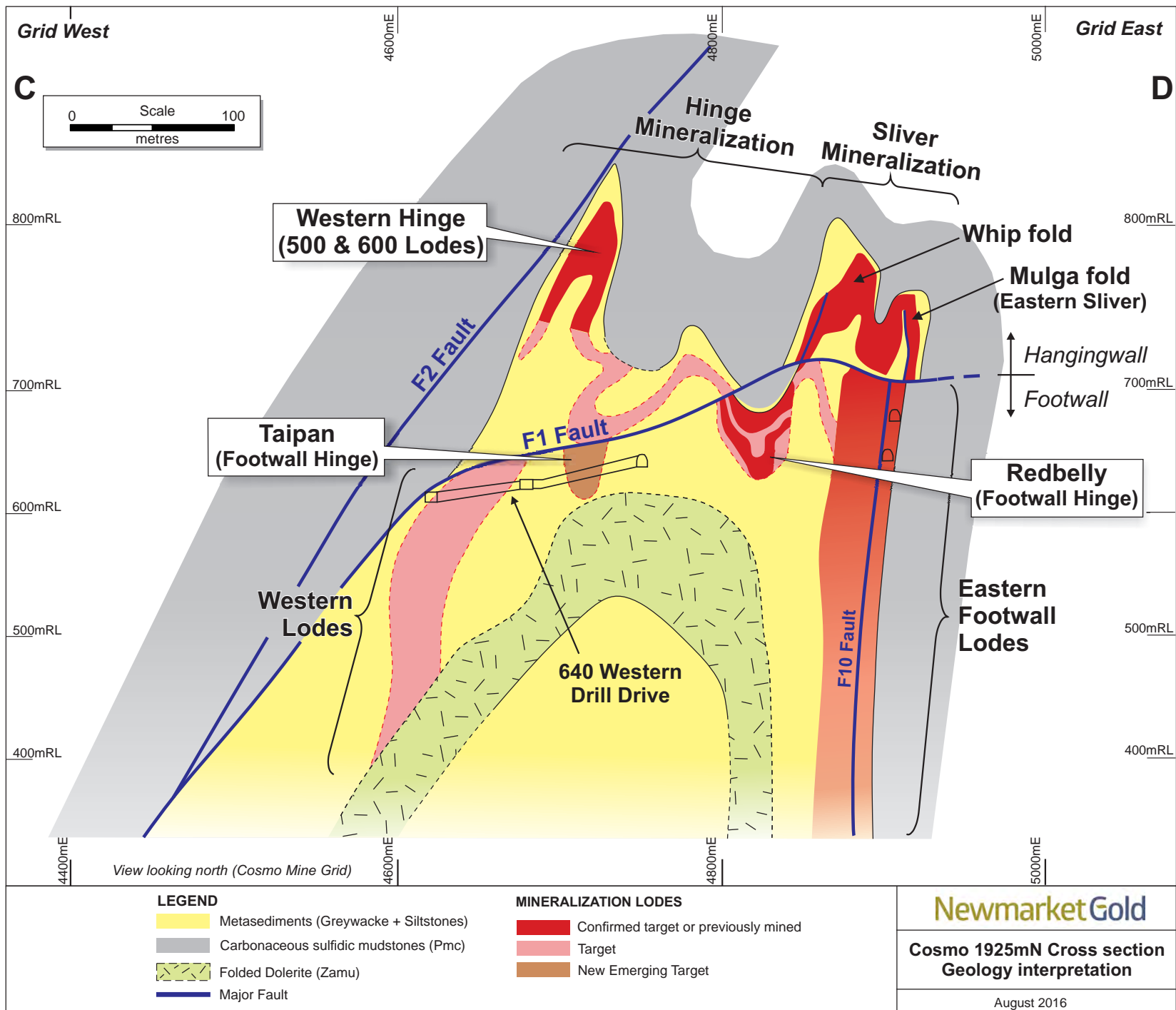


Figure 3 : Cross section 1925mN, Cosmo Gold Mine

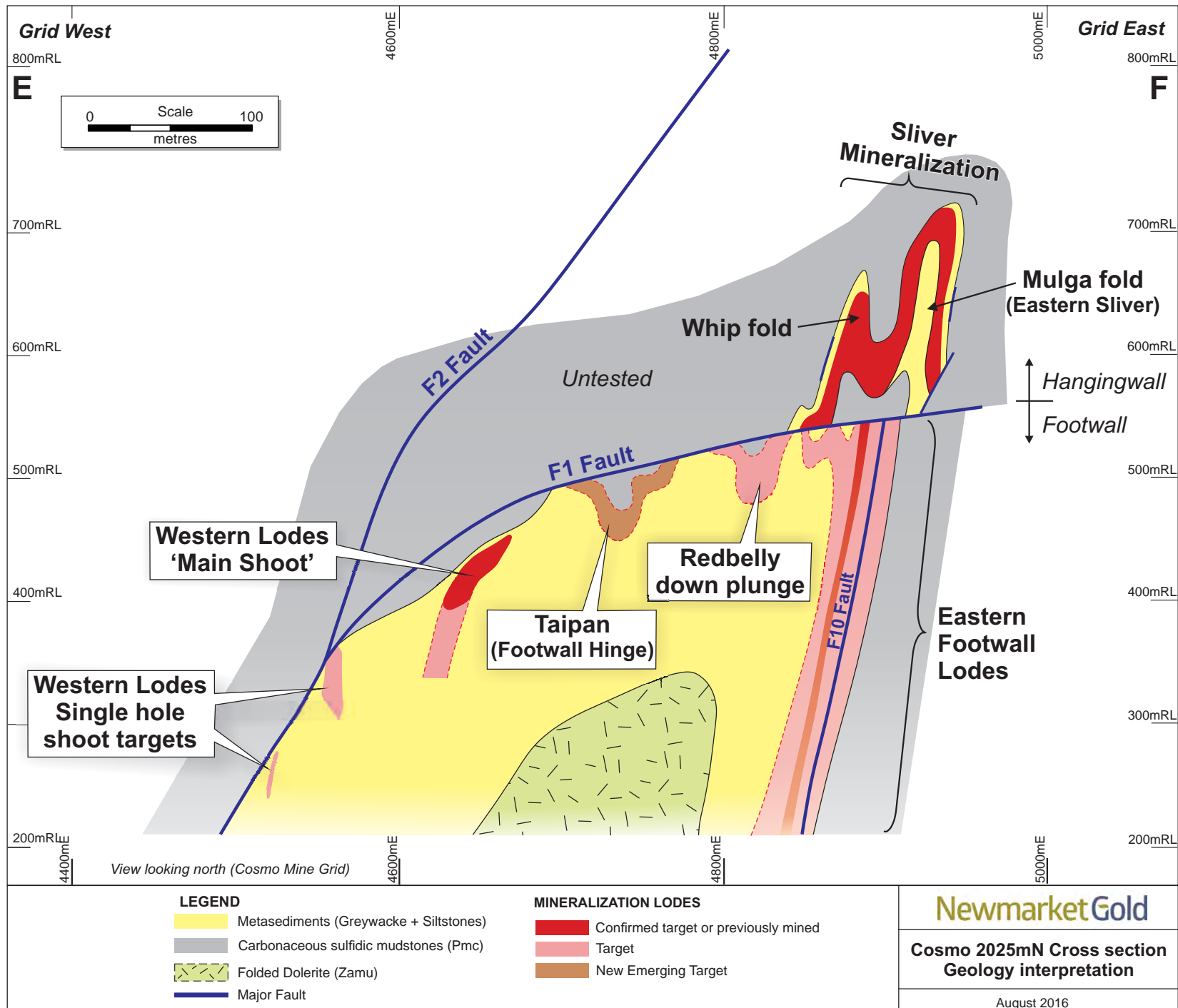


Figure 4 : Cross section 2025mN, Cosmo Gold Mine

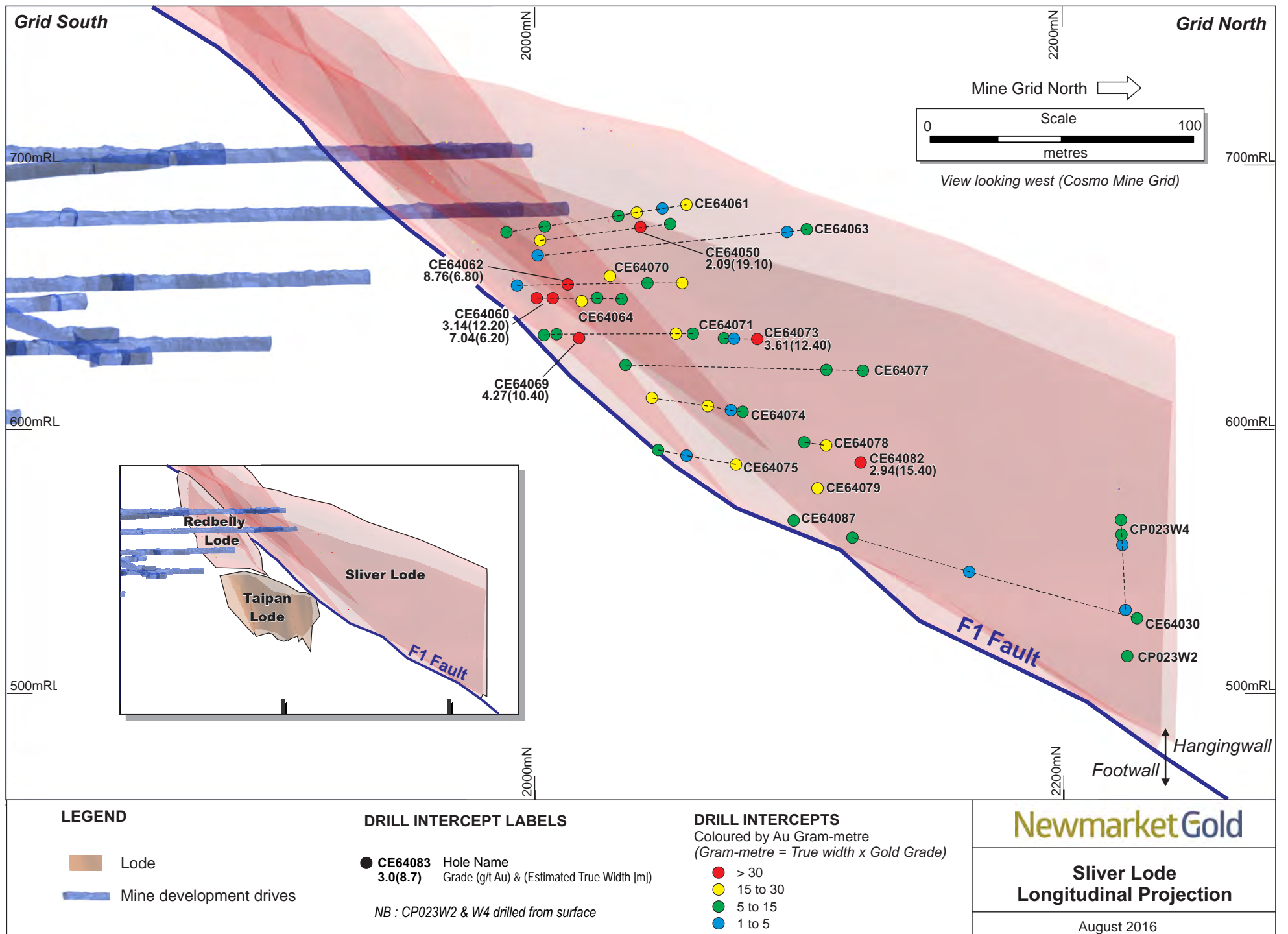


Figure 5a : Hole locations and significant assay results for Sliver Lode

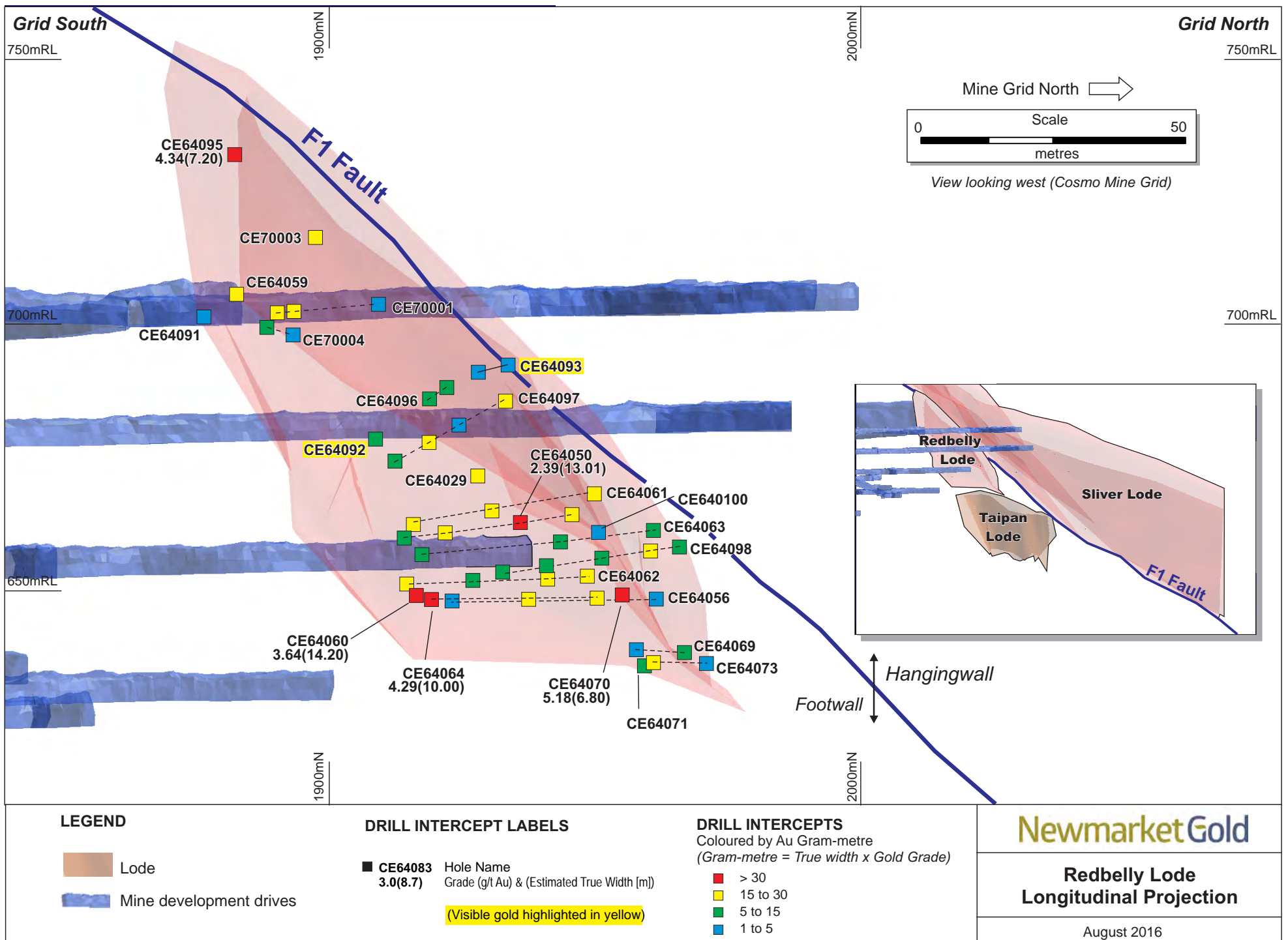
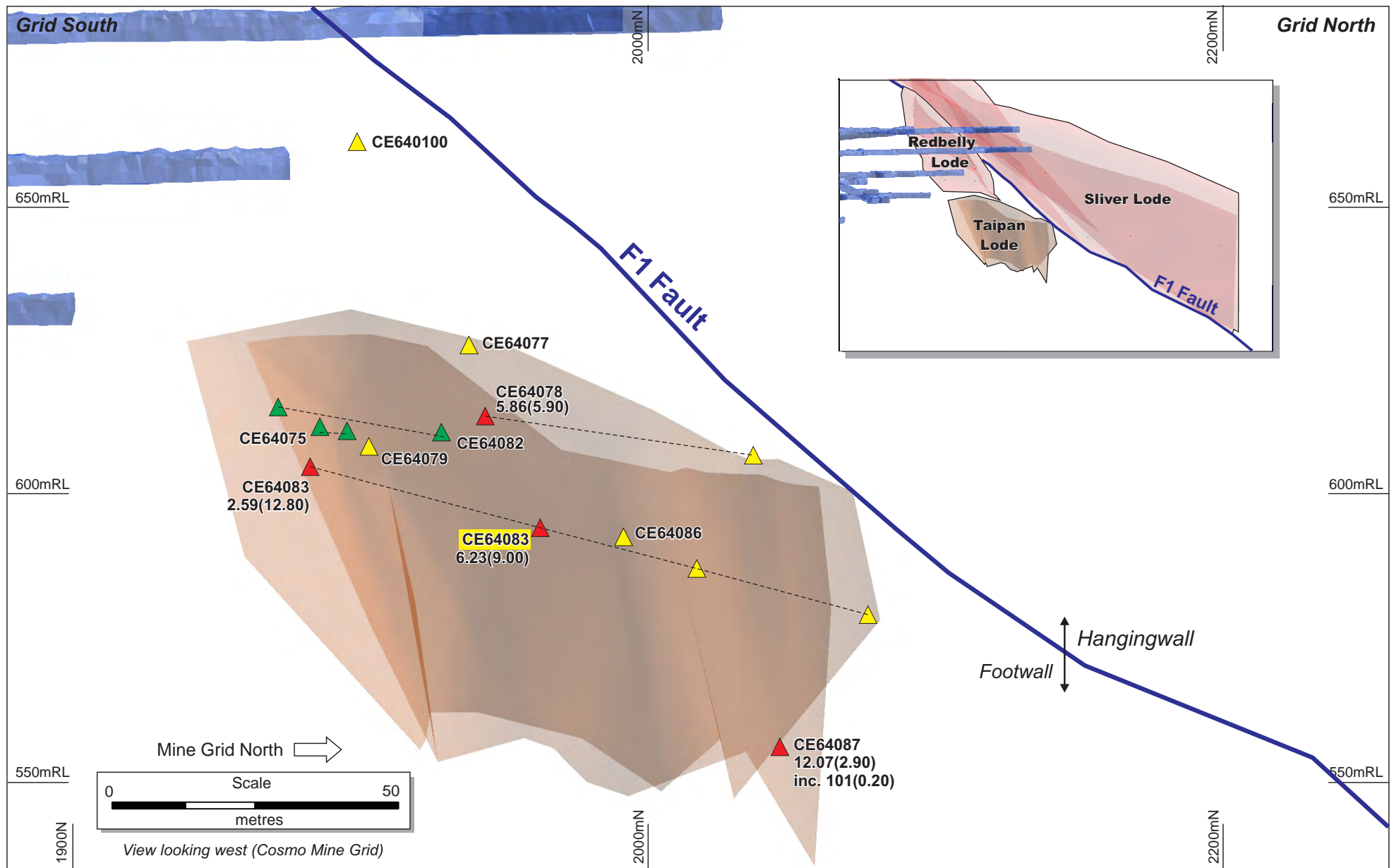


Figure 5b : Hole locations and significant assay results for Redbelly Lode (Note 200% zoom relative to Figure 5a)



LEGEND

- Lode
- Mine development drives

DRILL INTERCEPT LABELS

- ▲ **CE64083** Hole Name
3.0(8.7) Grade (g/t Au) & (Estimated True Width [m])
- (Visible gold highlighted in yellow)

DRILL INTERCEPTS

- Coloured by Au Gram-metre
(Gram-metre = True width x Gold Grade)
- ▲ > 30
 - ▲ 15 to 30
 - ▲ 5 to 15
 - ▲ 1 to 5

NewmarketGold

**Taipan Lode
Longitudinal Projection**

August 2016

Figure 5c : Hole locations and significant assay results for Taipan Lode (Note 200% zoom relative to Figure 5a)

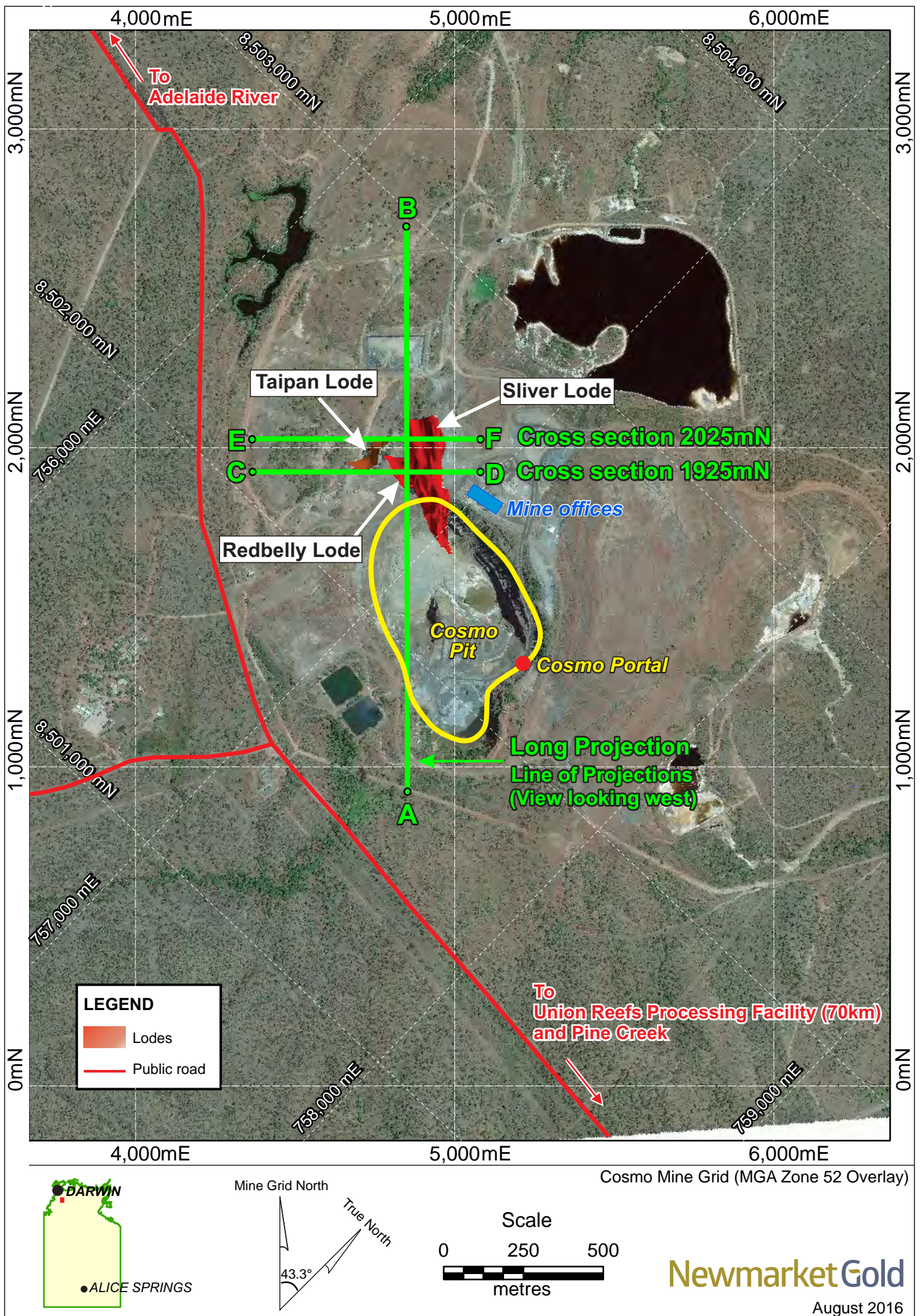


Figure 6 : Cosmo Location Plan, Cosmo Gold Mine