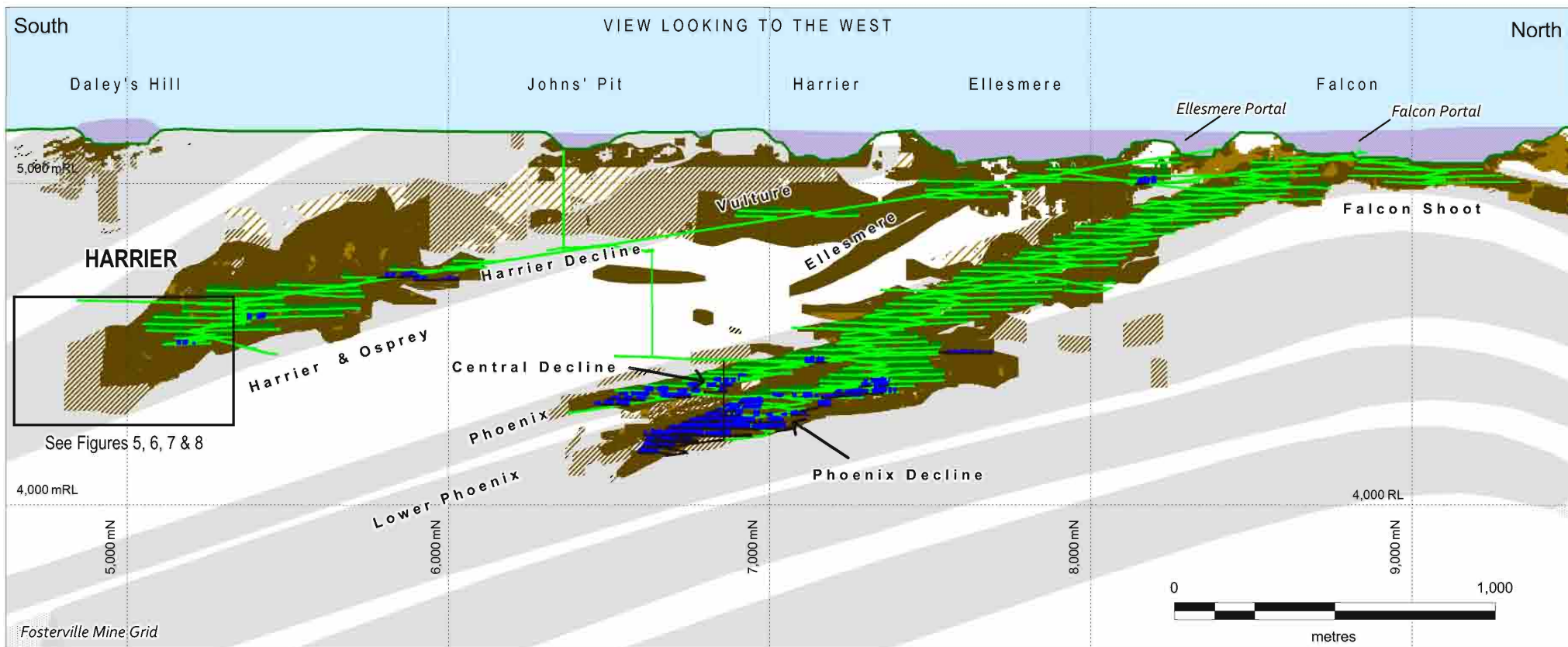


NewmarketGold

Figure 1

Location Plan, Fosterville Gold Mine

September 2016



### LEGEND

#### RESOURCE GRADE SHELLS

Indicated

Inferred



>3 g/t Au



>3 g/t Au



Mined Stopes



Reserve Stopes



1.5 g/t Au



1.5 g/t Au



Target Trend



Mined Development

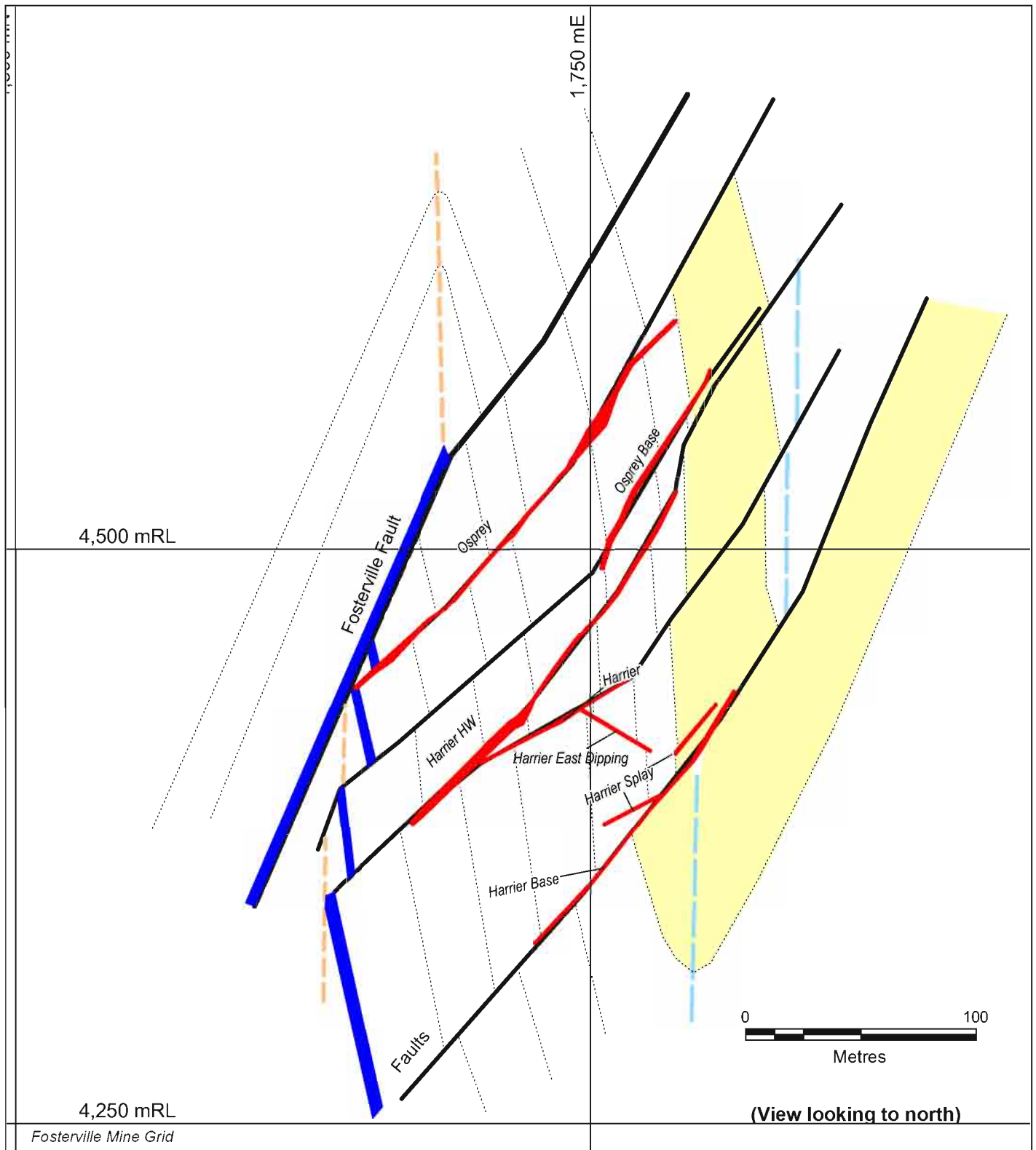
— Mine Design

(December 2015 Resources, Reserves and June 2016 As Mined Development and stopes shown)

NewmarketGold

Figure 2: Fosterville Fault Zone Long Projection, Fosterville Gold Mine

September 2016



**LEGEND**

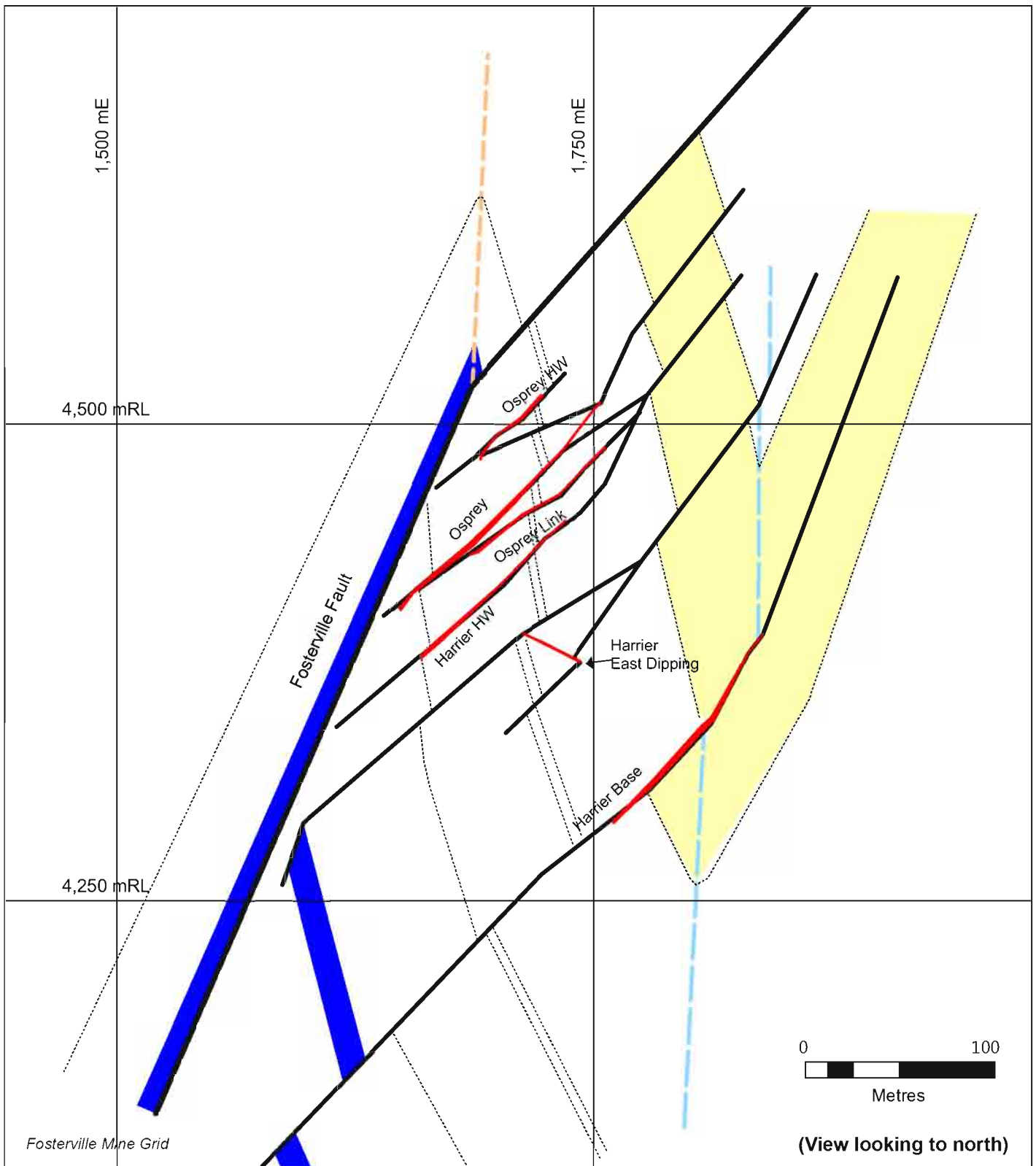
- Harrier Shale
- Kestrel Shale
- Gold Mineralization
- Fault
- Minor Fault
- Syncline
- Anticline
- Bedding Form Line

**NewmarketGold**

**Harrier 5050mN  
Schematic Geological  
Cross-Section,  
Fosterville Gold Mine**

**Figure 3**

September 2016



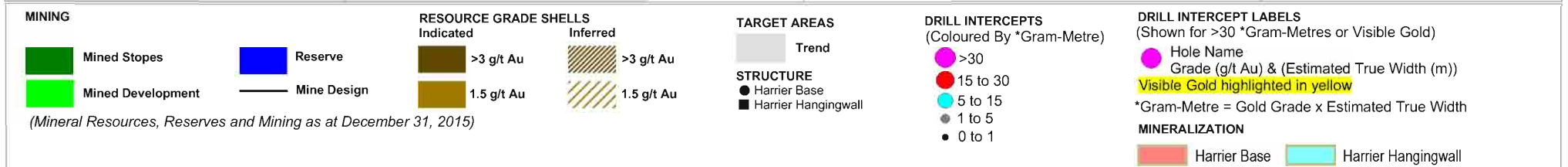
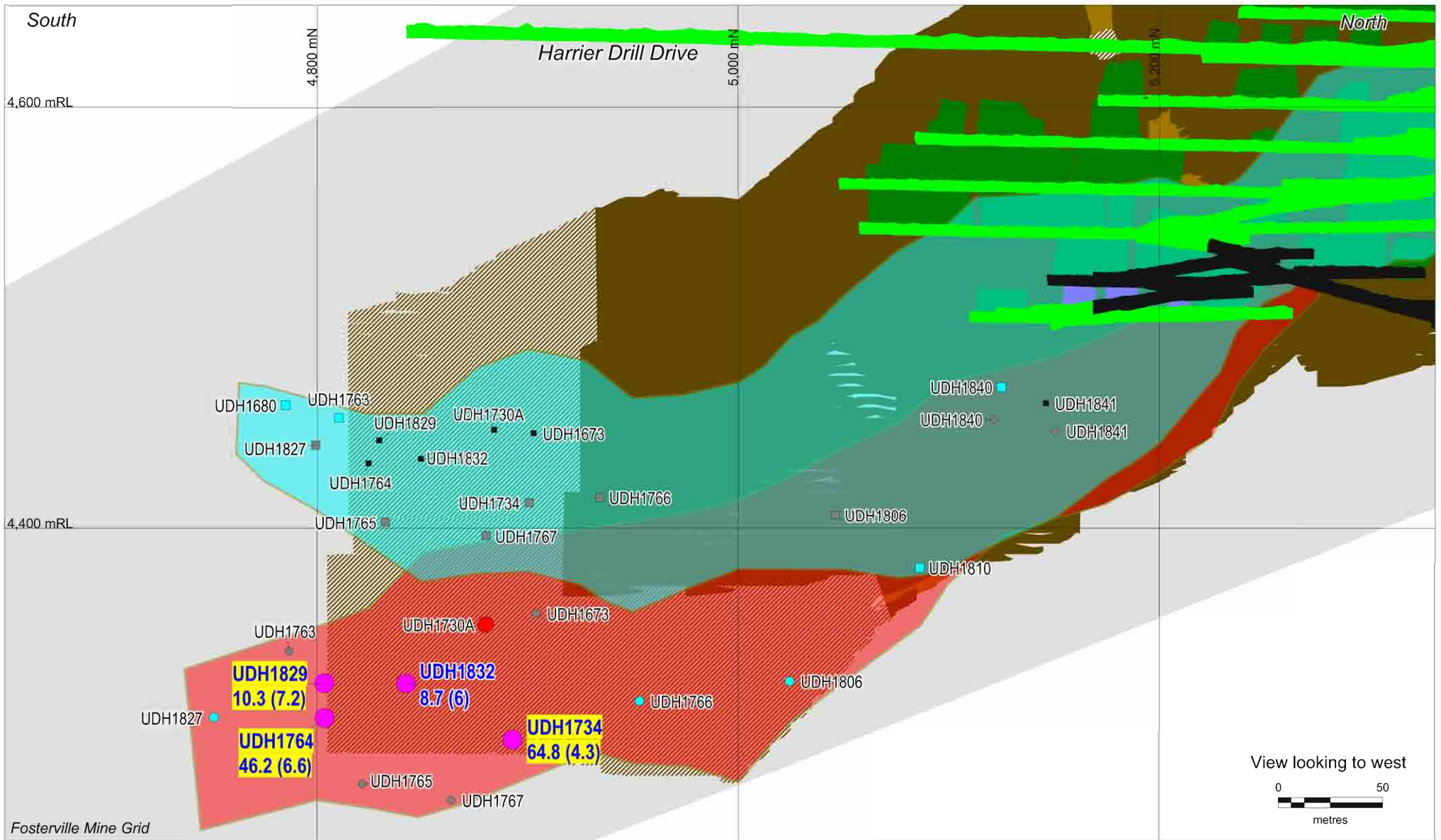
**LEGEND**

- Harrier Shale
- Kestrel Shale
- Gold Mineralization
- Fault
- Minor Fault
- Syncline
- Anticline
- Bedding Form Line

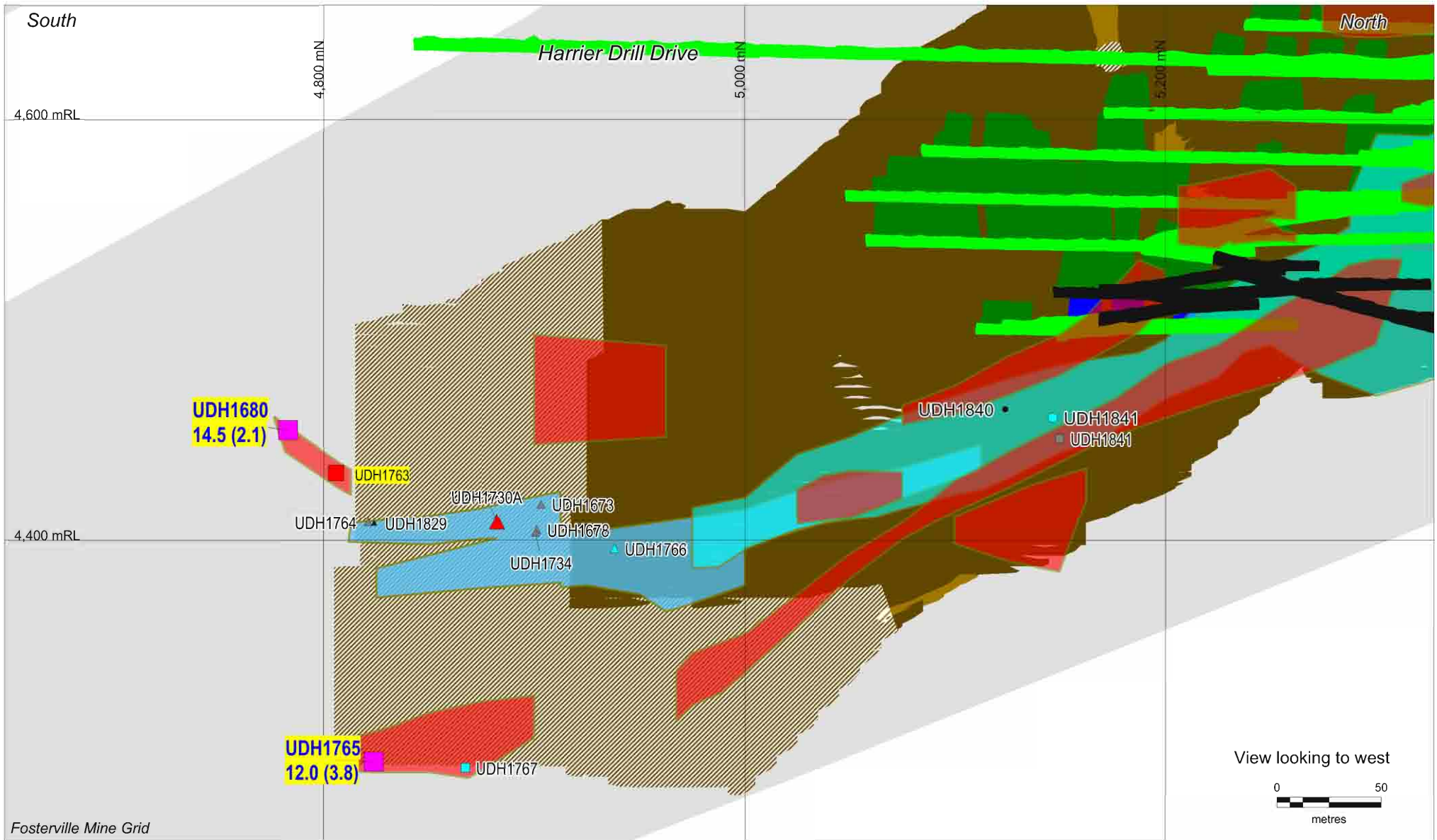
**NewmarketGold**  
**Harrier 4850mN**  
**Schematic Geological**  
**Cross-Section,**  
**Fosterville Gold Mine**

**Figure 4**

September 2016

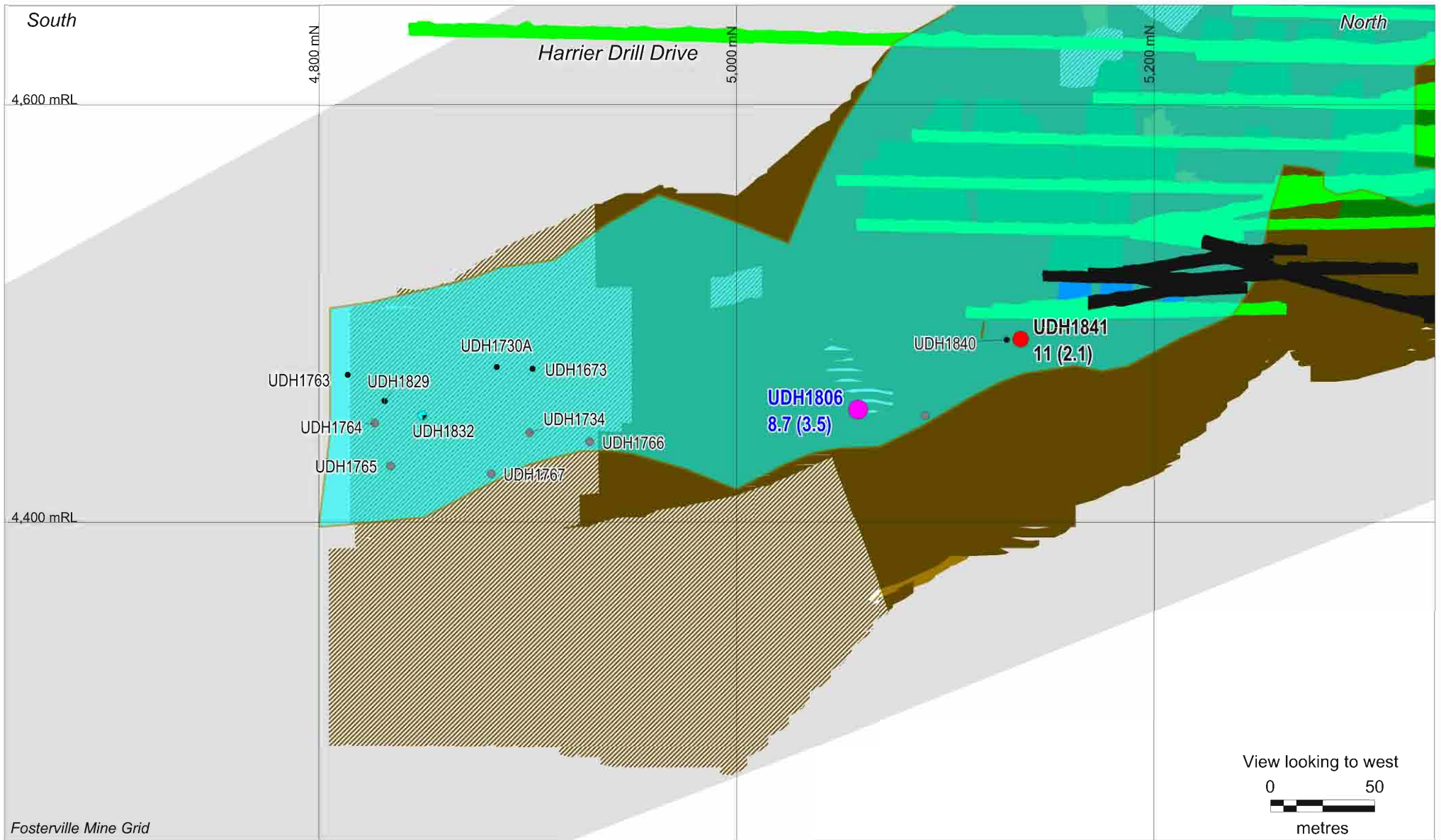


**Figure 5 Longitudinal Projection of Harrier Base & Harrier Hangingwall Mineralization, Fosterville Gold Mine** September 2016



**Figure 6 Longitudinal Projection of Harrier, Harrier Splay & Harrier East Dipping Mineralization, Fosterville Gold Mine**

September 2016



Fosterville Mine Grid

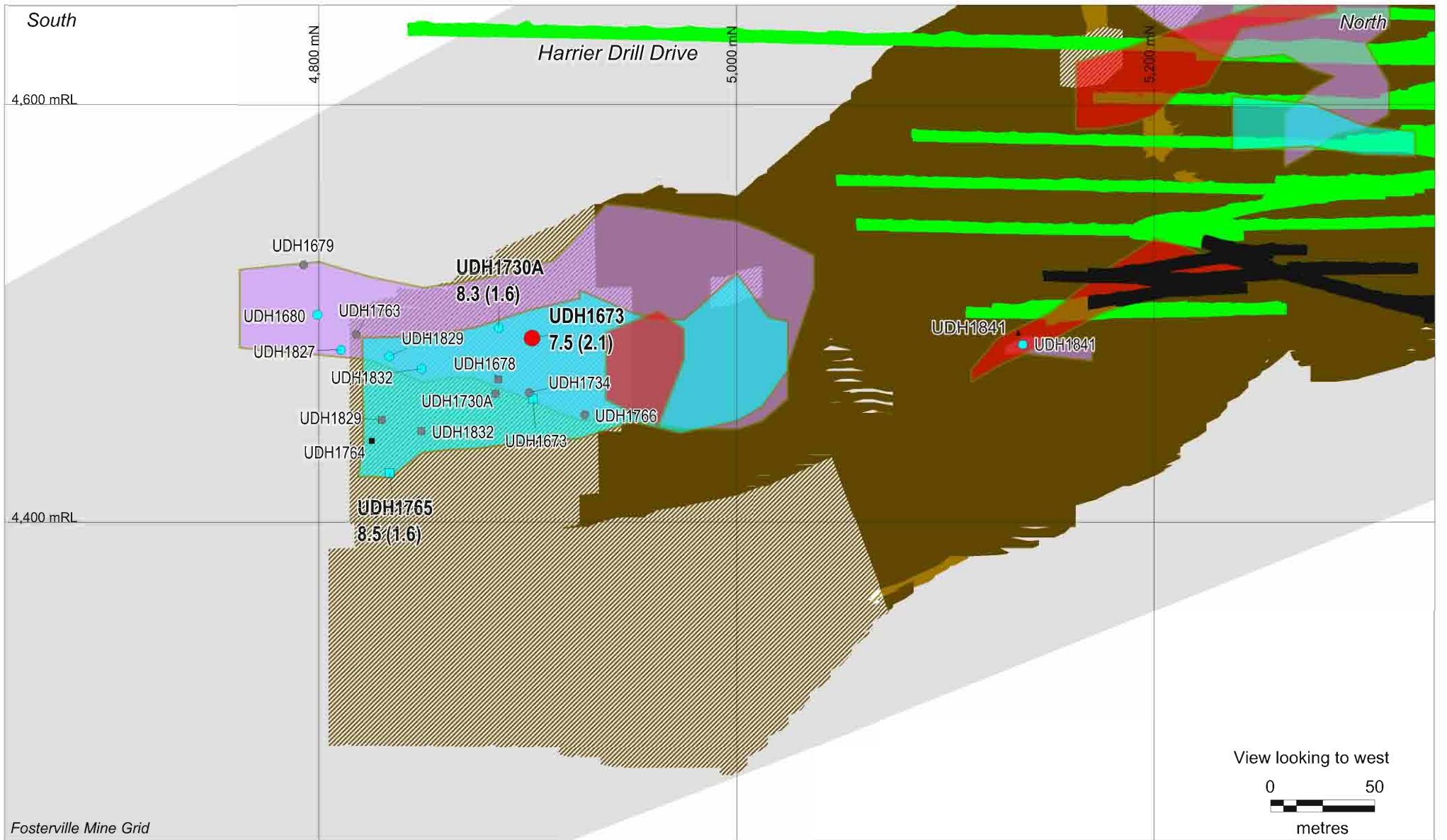


NewmarketGold

Figure 7

Longitudinal Projection of Osprey Mineralization, Fosterville Gold Mine

September 2016



Fosterville Mine Grid

View looking to west



NewmarketGold

Figure 8 Longitudinal Projection of Osprey Hangingwall, Link & Splay Mineralization, Fosterville Gold Mine

September 2016