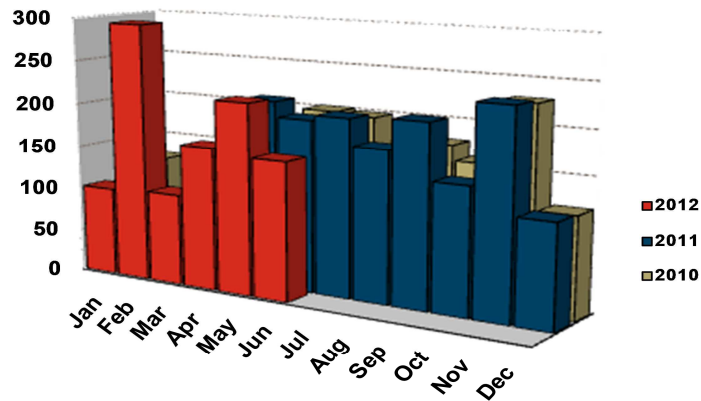


Oshawa CMA Home Starts



Source: CMHC

JUNE HOUSING STARTS												
	SINGLE		SEMI		TH		APT		TOTAL		% CHG	
	2011	2012	2011	2012	2011	2012	2011	2012	2011	2012		
Whitby	60	29	0	0	4	15	0	0	64	44	-31.3	
Oshawa City	36	47	0	0	0	0	0	0	36	47	30.6	
Clarington	83	51	0	0	14	16	0	0	97	67	-30.9	
OSHAWA CMA	179	127	0	0	18	31	0	0	197	158	-19.8	
Pickering	8	33	0	0	0	0	0	0	8	33	**	
Ajax	32	24	26	0	14	70	0	0	72	94	30.6	
Uxbridge	10	5	0	0	0	0	0	0	10	5	-50.0	
Brock	1	2	0	0	0	0	0	0	1	2	100.0	
Scugog	3	5	0	0	0	0	0	0	3	5	66.7	
DURHAM REGION	233	196	26	0	32	101	0	0	291	297	2.1	

JANUARY-JUNE HOUSING STARTS												
	SINGLE		SEMI		TH		APT		TOTAL		% CHG	
	2011	2012	2011	2012	2011	2012	2011	2012	2011	2012		
Whitby	196	134	0	0	36	111	0	211	232	456	96.6	
Oshawa City	165	125	38	0	44	0	16	0	263	125	-52.5	
Clarington	246	335	0	6	42	39	0	82	288	462	60.4	
OSHAWA CMA	607	594	38	6	122	150	16	293	783	1043	33.2	
Pickering	35	177	0	0	3	24	235	0	273	201	-26.4	
Ajax	165	161	36	28	106	124	0	0	307	313	2.0	
Uxbridge	17	32	0	0	0	0	0	0	17	32	88.2	
Brock	4	2	0	0	0	0	0	0	5	2	-60.0	
Scugog	9	8	0	0	0	0	0	0	9	8	-11.1	
DURHAM REGION	837	974	74	34	231	298	251	293	1,394	1,599	14.7	

Source: CMHC