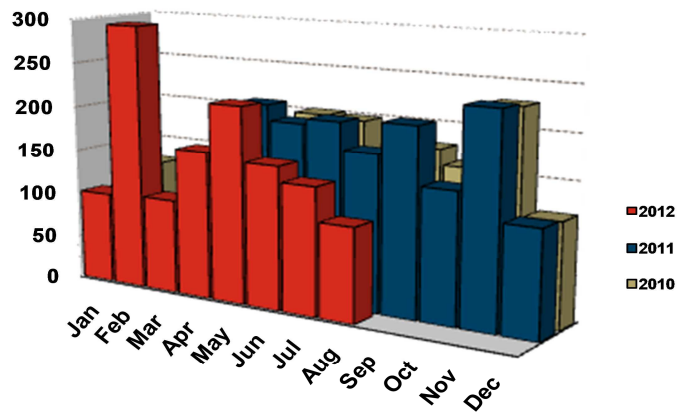


### Oshawa CMA Home Starts



Source: CMHC

AUGUST HOUSING STARTS											
	SINGLE		SEMI		TH		APT		TOTAL		% CHG
	2011	2012	2011	2012	2011	2012	2011	2012	2011	2012	
Whitby	27	22	0	0	47	0	0	0	74	22	-70.3
Oshawa City	23	21	2	4	0	18	16	0	41	43	4.9
Clarington	46	25	0	0	12	14	0	0	58	39	-32.8
<b>OSHAWA CMA</b>	<b>96</b>	<b>68</b>	<b>2</b>	<b>4</b>	<b>59</b>	<b>32</b>	<b>16</b>	<b>0</b>	<b>173</b>	<b>104</b>	<b>-39.9</b>
Pickering	54	15	0	0	39	10	0	0	93	25	-73.1
Ajax	26	30	14	0	14	7	0	0	54	37	-31.5
Uxbridge	2	1	0	0	0	0	0	0	2	1	-50.0
Brock	2	1	0	0	0	0	0	0	2	1	-50.0
Scugog	3	2	0	0	0	0	0	0	3	2	-33.3
<b>DURHAM REGION</b>	<b>183</b>	<b>117</b>	<b>16</b>	<b>4</b>	<b>112</b>	<b>49</b>	<b>16</b>	<b>0</b>	<b>327</b>	<b>170</b>	<b>-48.0</b>

JANUARY-AUGUST HOUSING STARTS											
	SINGLE		SEMI		TH		APT		TOTAL		% CHG
	2011	2012	2011	2012	2011	2012	2011	2012	2011	2012	
Whitby	302	172	0	0	93	119	0	211	395	502	27.1
Oshawa City	215	179	40	4	51	40	32	0	338	223	-34.0
Clarington	348	415	0	6	78	59	0	82	426	562	31.9
<b>OSHAWA CMA</b>	<b>865</b>	<b>766</b>	<b>40</b>	<b>10</b>	<b>222</b>	<b>218</b>	<b>32</b>	<b>293</b>	<b>1,159</b>	<b>1,287</b>	<b>11.0</b>
Pickering	95	228	0	0	42	41	235	0	372	269	-27.7
Ajax	198	210	52	42	133	144	0	0	383	396	3.4
Uxbridge	36	38	0	0	0	0	0	0	36	38	5.6
Brock	7	7	0	0	0	0	0	0	7	7	0.0
Scugog	13	11	0	0	0	0	0	0	13	11	-15.4
<b>DURHAM REGION</b>	<b>1,214</b>	<b>1,260</b>	<b>92</b>	<b>52</b>	<b>397</b>	<b>403</b>	<b>267</b>	<b>293</b>	<b>1,970</b>	<b>2,008</b>	<b>2</b>

Source: CMHC