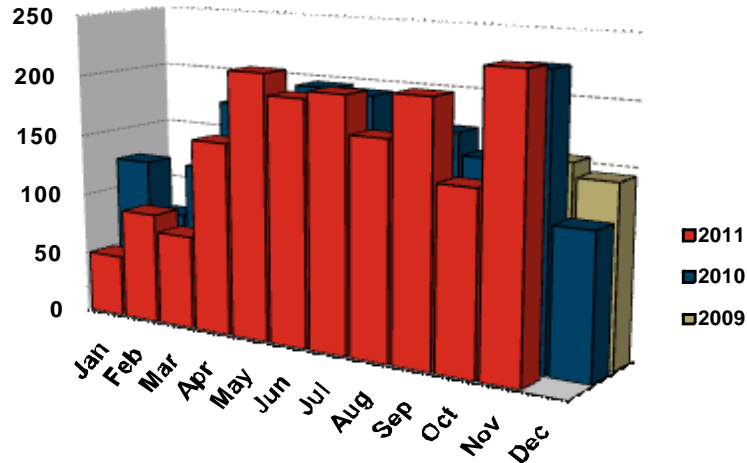


Oshawa CMA Home Starts



Source: CMHC

HOUSING STARTS - DURHAM REGION											
	NOVEMBER HOUSING STARTS										
	SINGLE		SEMI		TH		APT		TOTAL		% CHG
	2010	2011	2010	2011	2010	2011	2010	2011	2010	2011	
Whitby	83	79	0	0	55	10	0	0	138	89	-35.5
Oshawa City	47	47	4	0	0	0	0	12	51	59	15.7
Clarington	33	84	0	0	6	0	0	0	39	84	115.4
OSHAWA CMA	163	210	4	0	61	10	0	12	228	232	2
Pickering	3	152	0	0	0	0	0	0	3	152	**
Ajax	10	43	0	10	0	0	0	0	10	53	**
Uxbridge	2	4	0	0	0	0	0	0	2	4	100.0
Brock	1	1	0	0	0	0	0	0	1	1	0.0
Scugog	0	1	0	0	0	0	0	0	0	1	NA
DURHAM REGION	179	411	4	10	61	10	0	12	244	443	81.6

JANUARY-NOVEMBER HOUSING STARTS											
	SINGLE		SEMI		TH		APT		TOTAL		% CHG
	2010	2011	2010	2011	2010	2011	2010	2011	2010	2011	
	Whitby	382	474	8	0	193	159	0	0	583	633
Oshawa City	592	321	6	40	16	77	0	44	614	482	-21.5
Clarington	457	502	0	0	107	125	12	0	576	627	8.9
OSHAWA CMA	1431	1297	14	40	316	361	12	44	1773	1742	-2
Pickering	62	277	0	0	40	76	0	235	102	588	**
Ajax	266	345	32	88	264	249	0	0	562	682	21.4
Uxbridge	41	48	0	0	0	0	0	0	41	48	17.1
Brock	8	16	0	0	0	0	0	0	8	16	100.0
Scugog	13	16	0	0	0	0	0	0	13	16	23.1
DURHAM REGION	1821	1999	46	128	620	686	12	279	2,499	3,092	23.7

Source: CMHC