

Figure 1: Location of PAW drilling and the 14 RC holes being reported

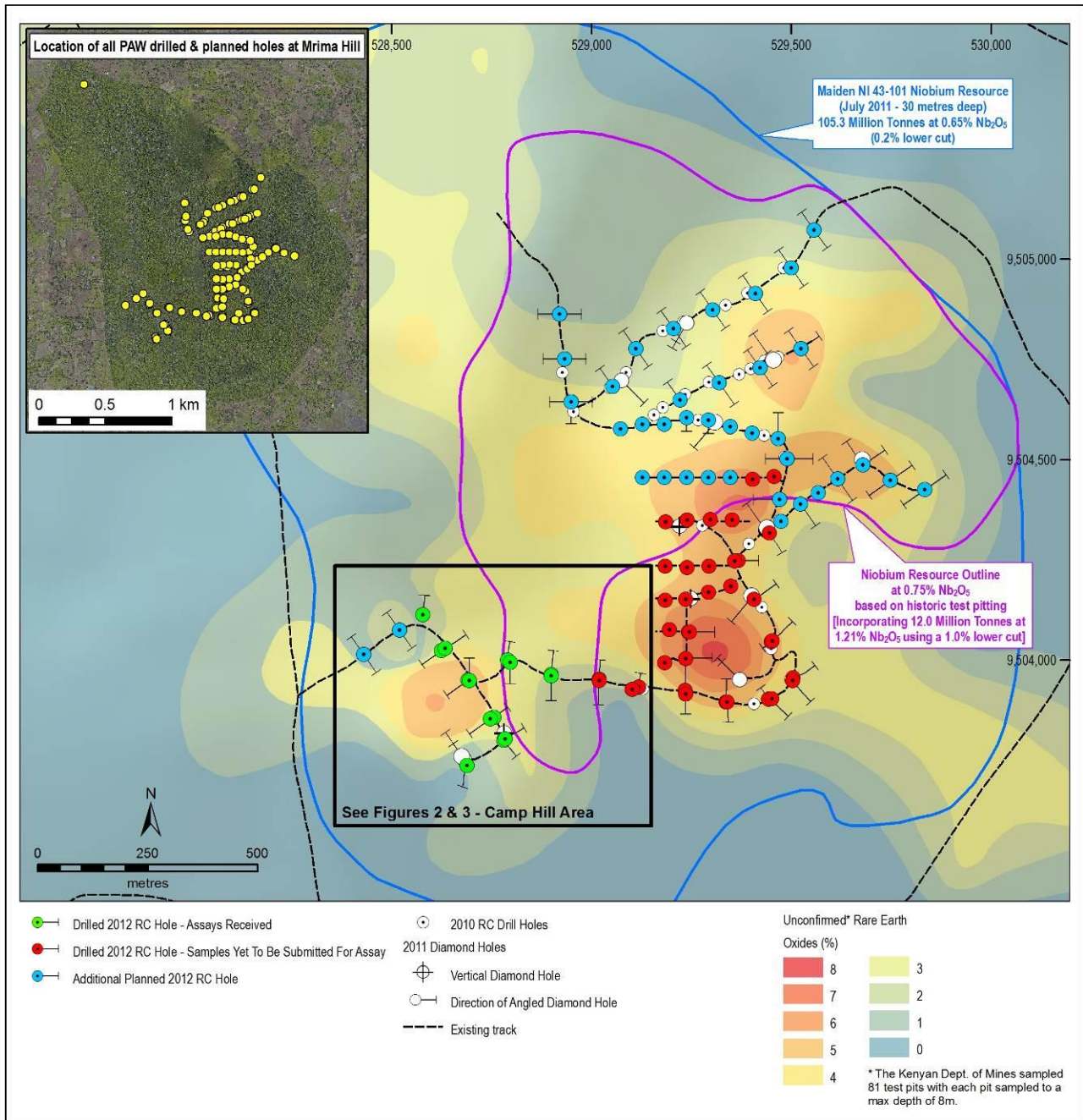


Figure 2: PAW Niobium RC drill assay results at Camp Hill.

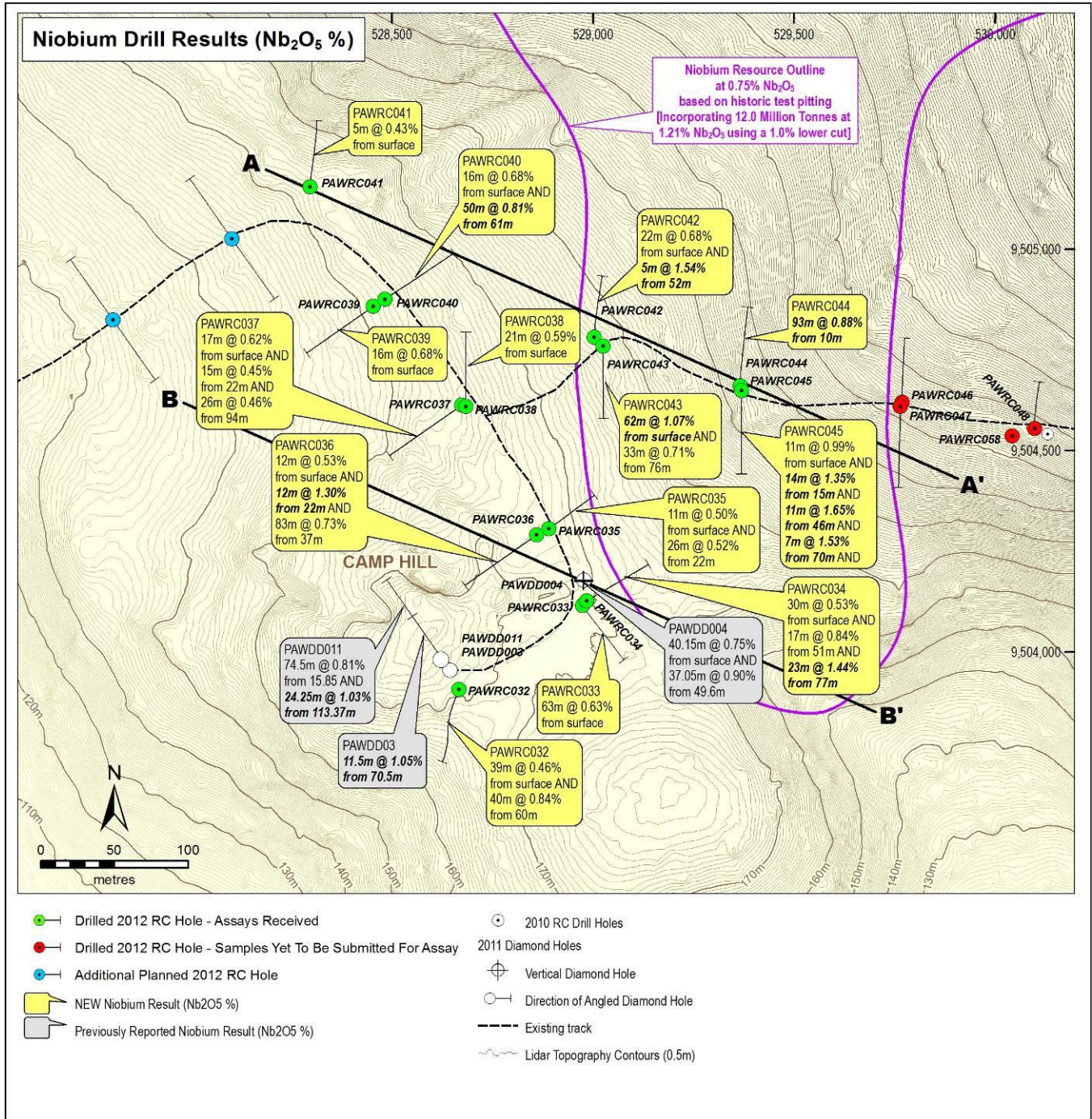


Figure 4: Cross Section B-B' Showing Niobium Intersections at Camp Hill

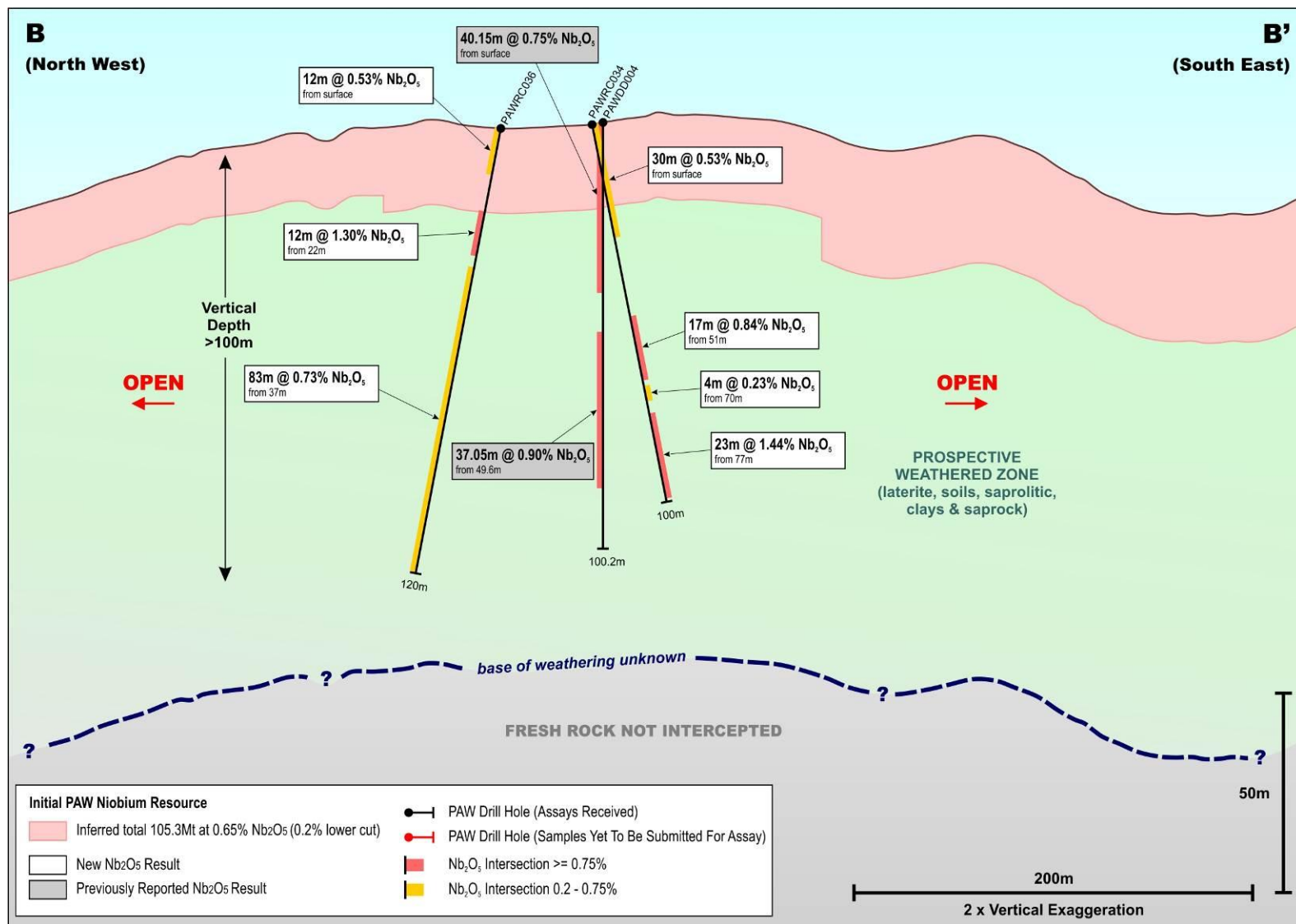
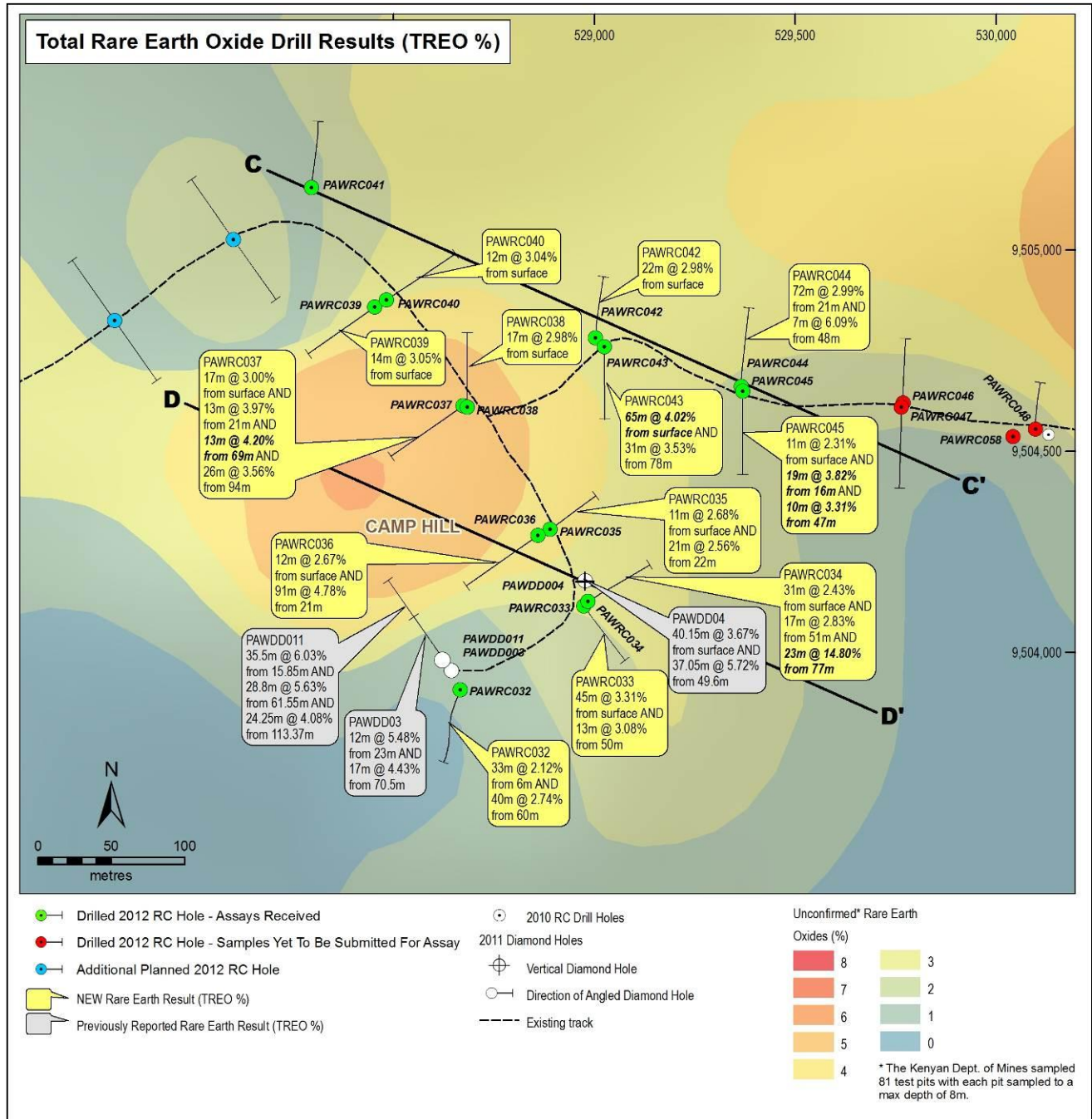
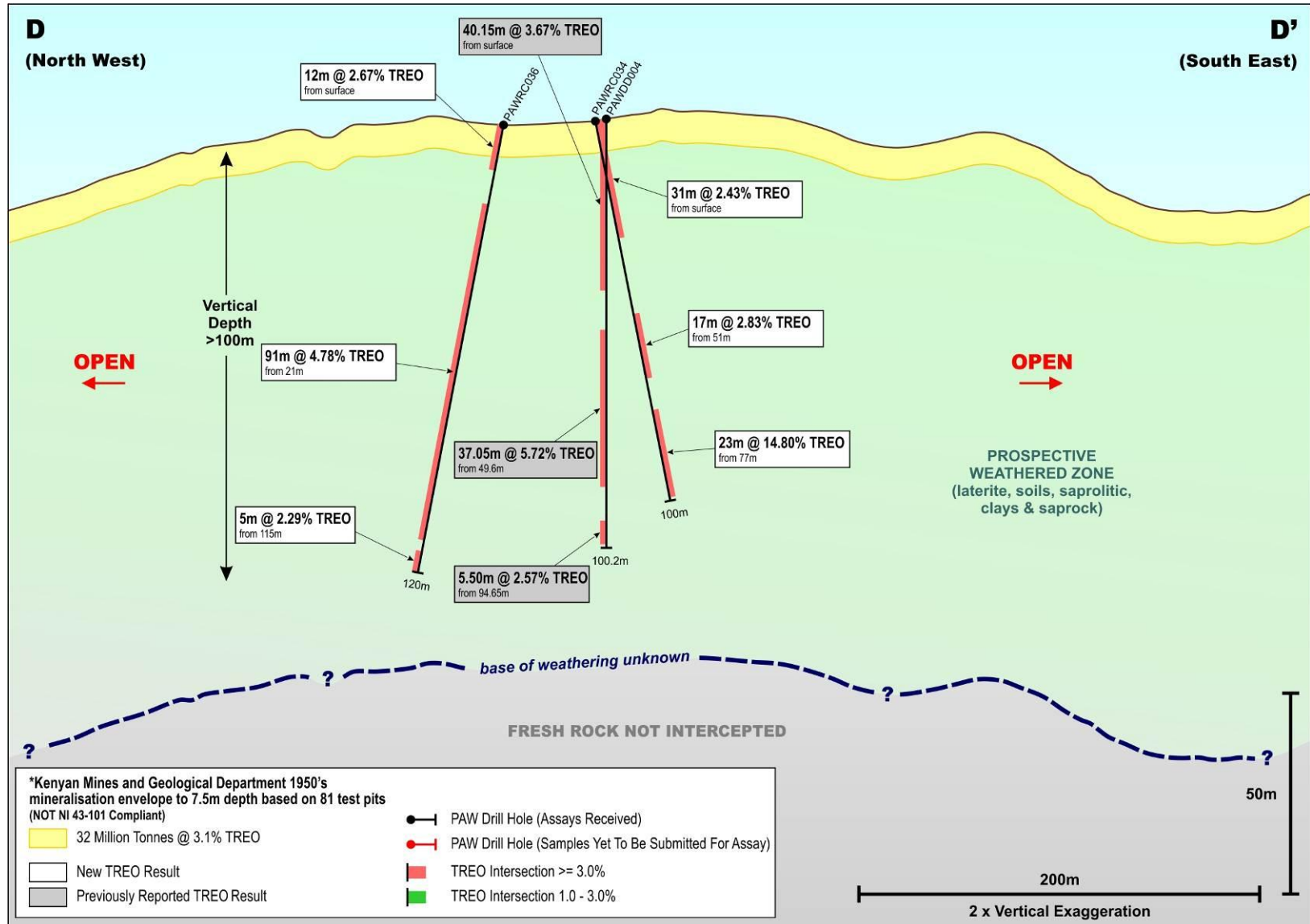


Figure 5: PAW TREO RC drill assay results at Camp Hill.



*Note that the potential quantities and grades of the above REO estimates are conceptual in nature, and there is insufficient exploration to date to define a current mineral resource and therefore it is uncertain if further exploration will result in the target being delineated as a current mineral resource. A "qualified person" as defined under National Instrument 43-101 has not completed sufficient work to classify the above mentioned historical estimate as a current mineral resource. The Company is not treating the historical estimate as a current mineral resource. The historical estimate is not compliant with NI 43-101 and should not be relied upon.

Figure 7: Cross Section D-D' Showing TREO Intersections at Camp Hill



*Note that the potential quantities and grades of the above REO estimates are conceptual in nature, and there is insufficient exploration to date to define a current mineral resource and therefore it is uncertain if further exploration will result in the target being delineated as a current mineral resource. A "qualified person" as defined under National Instrument 43-101 has not completed sufficient work to classify the above mentioned historical estimate as a current mineral resource. The Company is not treating the historical estimate as a current mineral resource. The historical estimate is not compliant with NI 43-101 and should not be relied upon.