

APPENDIX

Table 4: Extended drilling highlights from the third quarter of 2014. Average grades reported are weighted by individual sample core lengths. Interval assays represent measured core lengths. True widths are estimated to represent between 30-70% of the reported core lengths.

TARGET	HOLE #	FROM (m)	TO (m)	LENGTH (m)	Pd (g/t)	Pt (g/t)	Au (g/t)	Ni (%)	Cu (%)
Lower Offset - Central	14-08-001W2	1608.53	1625.00	16.47	2.84	0.19	0.26	0.11	0.10
	<i>including</i>	1616.03	1621.00	4.97	4.81	0.32	0.60	0.12	0.13
Lower Offset - North	14-904	522.00	560.50	38.50	3.00	0.22	0.09	0.05	0.02
	<i>including</i>	526.50	530.60	4.10	10.02	0.57	0.23	0.09	0.07
	<i>and</i>	551.50	560.50	9.00	5.86	0.40	0.16	0.04	0.01
	<i>including</i>	553.00	556.00	3.00	10.35	0.58	0.29	0.05	0.01
Upper Offset - North	14-902	470.40	496.00	25.60	2.94	0.22	0.27	0.10	0.06
	<i>including</i>	470.40	476.00	5.60	4.70	0.33	0.46	0.12	0.08
	14-903	503.90	547.00	43.10	3.15	0.25	0.09	0.06	0.02
	<i>including</i>	506.80	524.45	17.65	6.17	0.43	0.15	0.06	0.03
	<i>including</i>	508.00	509.00	1.00	58.40	4.17	0.61	0.10	0.04
	14-907	515.00	528.00	13.00	4.00	0.32	0.16	0.10	0.08
	14-908	430.09	452.00	21.91	4.02	0.31	0.24	0.13	0.10
	<i>including</i>	436.00	447.00	11.00	7.15	0.46	0.24	0.09	0.03
	<i>including</i>	438.00	443.00	5.00	11.29	0.64	0.20	0.09	0.02
Southeast Extension	14-773	436.00	458.00	22.00	3.07	0.33	0.25	0.11	0.12
	<i>and</i>	467.00	485.88	18.88	2.60	0.26	0.26	0.11	0.13
	14-774	455.00	822.00	367.00	1.43	0.16	0.13	0.08	0.06
	<i>including</i>	730.18	782.00	51.82	2.85	0.31	0.23	0.11	0.11
	<i>including</i>	764.00	781.00	17.00	3.95	0.37	0.29	0.12	0.13
	14-775	308.88	320.50	11.62	3.56	0.64	0.22	0.13	0.08
	<i>and</i>	573.34	592.00	18.66	3.23	0.25	0.14	0.05	0.03
	<i>including</i>	573.34	583.00	9.66	4.28	0.33	0.21	0.06	0.05
	<i>including</i>	578.00	581.00	3.00	8.85	0.63	0.39	0.07	0.07
	14-776	431.33	470.00	38.67	3.42	0.27	0.28	0.08	0.06
	<i>including</i>	447.66	468.00	20.34	5.24	0.40	0.43	0.10	0.08
	<i>including</i>	456.00	463.00	7.00	8.96	0.65	0.76	0.14	0.14
	14-777	374.00	380.00	6.00	4.47	0.44	0.29	0.10	0.09
	<i>and</i>	466.00	492.00	26.00	3.53	0.33	0.28	0.10	0.08
	<i>including</i>	480.00	487.00	7.00	7.61	0.71	0.62	0.18	0.17
Powerline Zone	14-101	13.00	52.00	39.00	3.64	0.32	0.19	0.11	0.10
	<i>including</i>	33.00	52.00	19.00	5.01	0.39	0.28	0.12	0.10
	14-102	6.00	50.10	44.10	1.94	0.18	0.11	0.05	0.06
	<i>including</i>	35.25	44.00	8.75	5.66	0.40	0.23	0.07	0.05
	14-104	10.19	30.27	20.08	1.54	0.15	0.06	0.06	0.06
	14-105	10.00	106.00	96.00	2.84	0.20	0.09	0.06	0.04
	<i>including</i>	37.00	71.75	34.75	6.38	0.36	0.17	0.09	0.03
	<i>including</i>	43.00	63.00	20.00	8.50	0.40	0.08	0.07	0.01

Figure 1. Longitudinal projection looking west and showing the primary drill targets and the approximate position of 2014 drilling pierce points (PP) for completed (Q2, Q3) and in progress and planned holes (Q4) on the Offset Zone deposit. Historical drilling pierce points not shown.

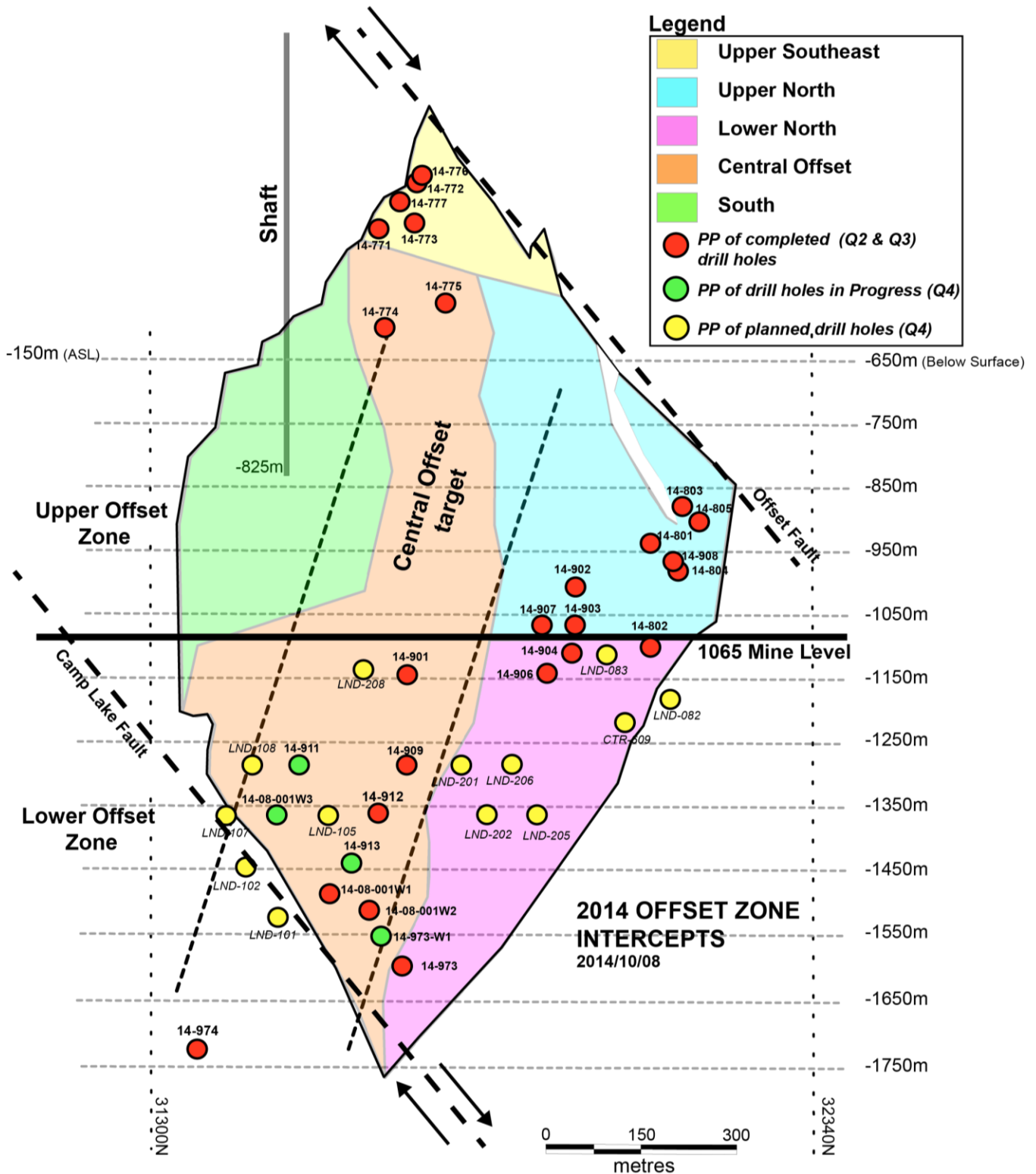


Figure 2. Target area and drill hole locations for the Powerline Zone located at the south east end of the Roby pit.

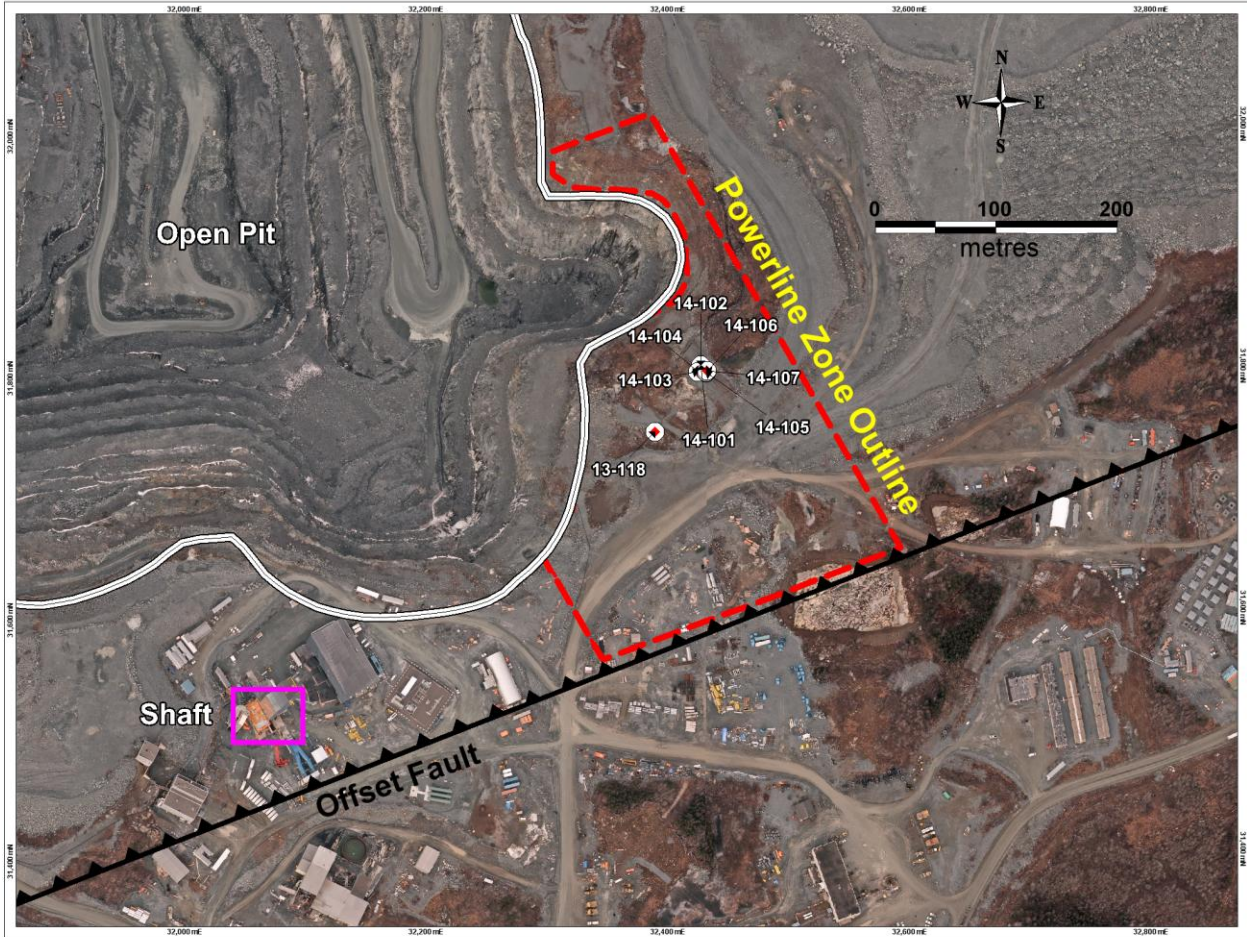


Figure 3. Location of near-surface exploration targets on the Lac des Iles mine block property. The position of the Offset zone deposit is approximate and based on a projection to surface along the north dipping Camp Lake and Offset faults.

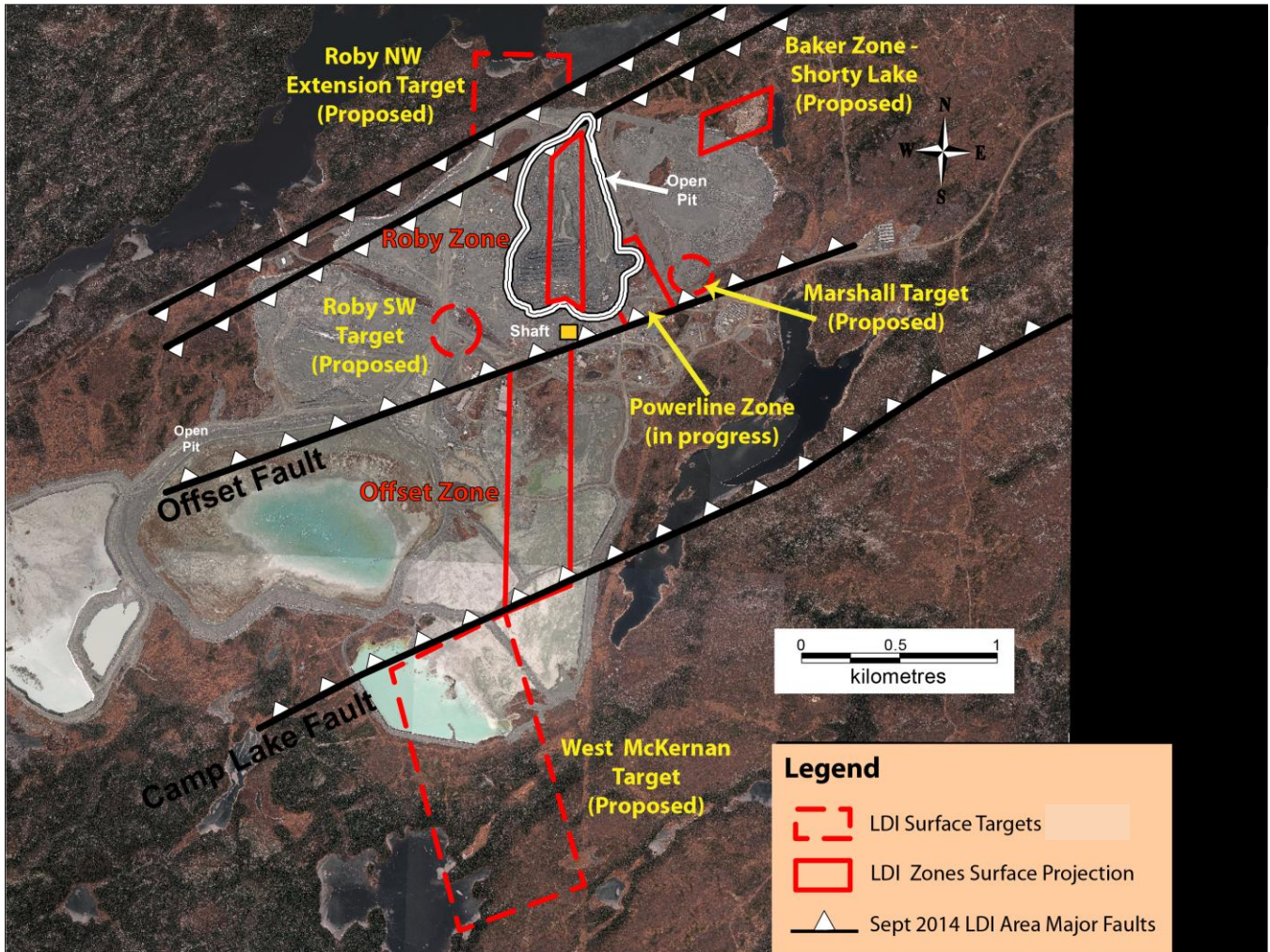


Figure 4. Current land-holdings of Lac des Iles Mines Ltd. in the Lac des Iles area on a background image of the regional total field magnetics ('hotter' colours have a strong magnetic response). Greenfields property portfolio excludes the mine property as shown. Additional claims were recently staked and registered with the Ministry of Northern Development and Mines that connect the southern margin of the mine property to the northern margin of the Shelby Lake property.

