

Figure 1. Lolita Property with extent and location of magnetic survey blocks with arsenic data in rock samples.

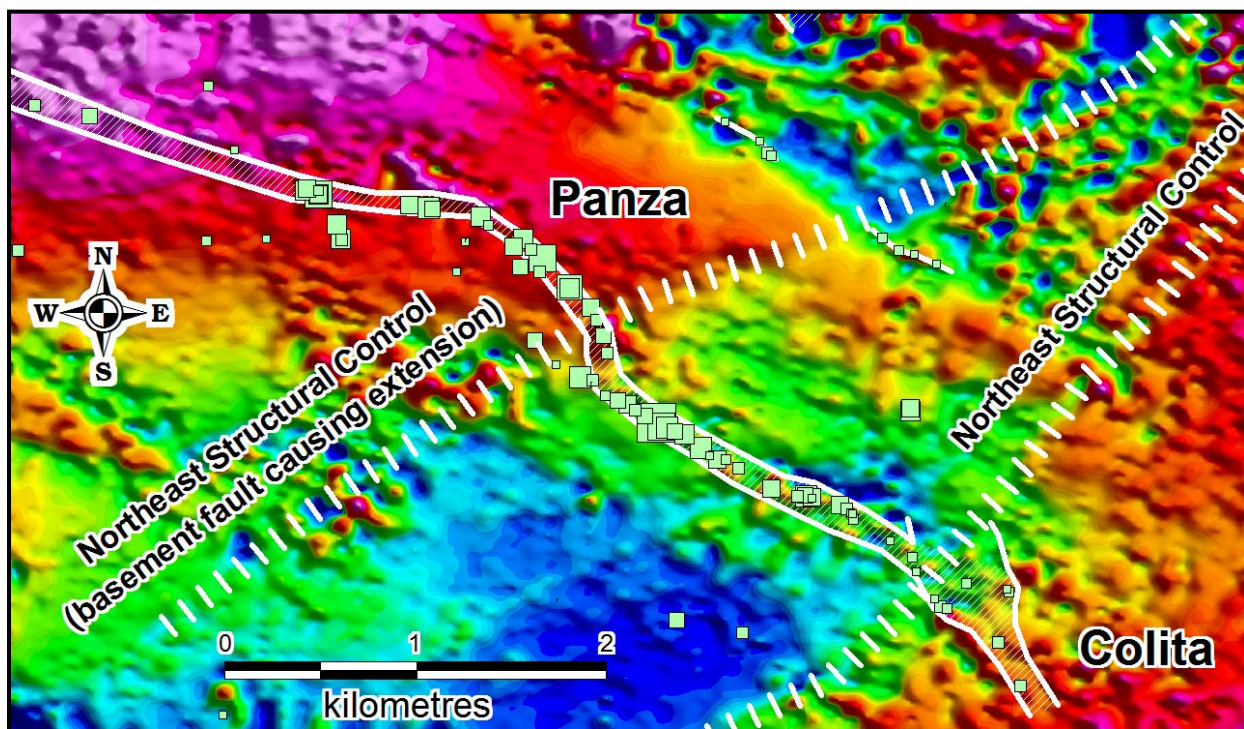


Figure 2. Panza - Colita Magnetic Survey Block. Reduced to pole magnetic data with corridor of hydrothermal structures and arsenic in rock samples. Note the northeast trending structures which appear to cause a deflection of the Panza Structure in the area of the most intense arsenic values.

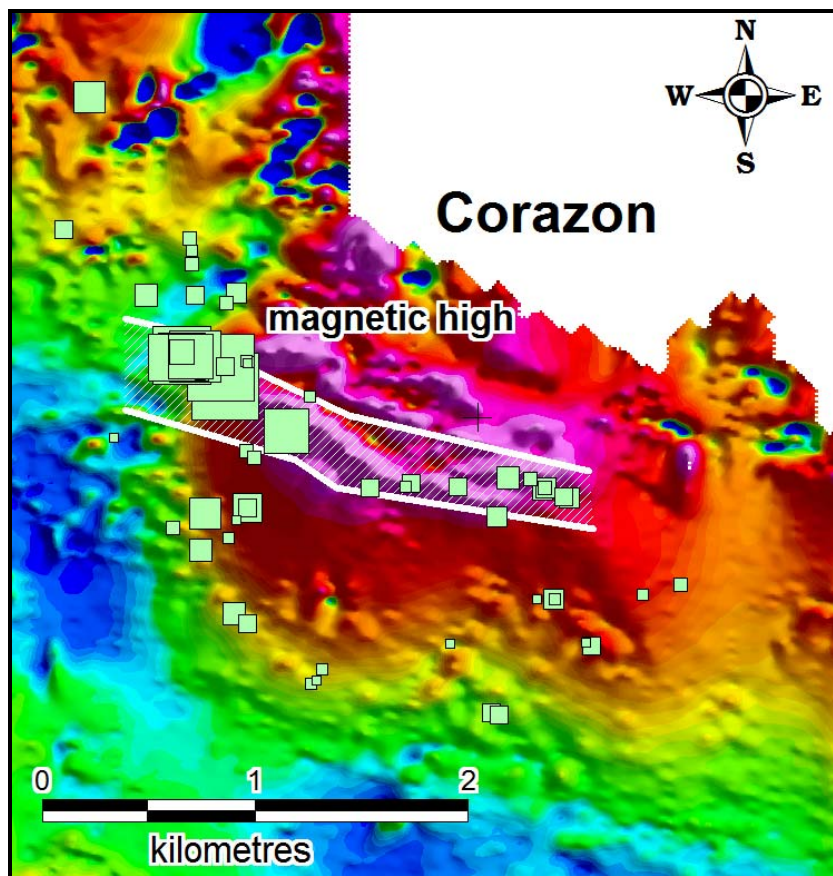


Figure 3. Corazon Magnetic Survey Block. Reduced to pole magnetic data with corridor of hydrothermal structures and arsenic in rock samples.