

Figure 1: PMI Gold's project locations in south-west Ghana

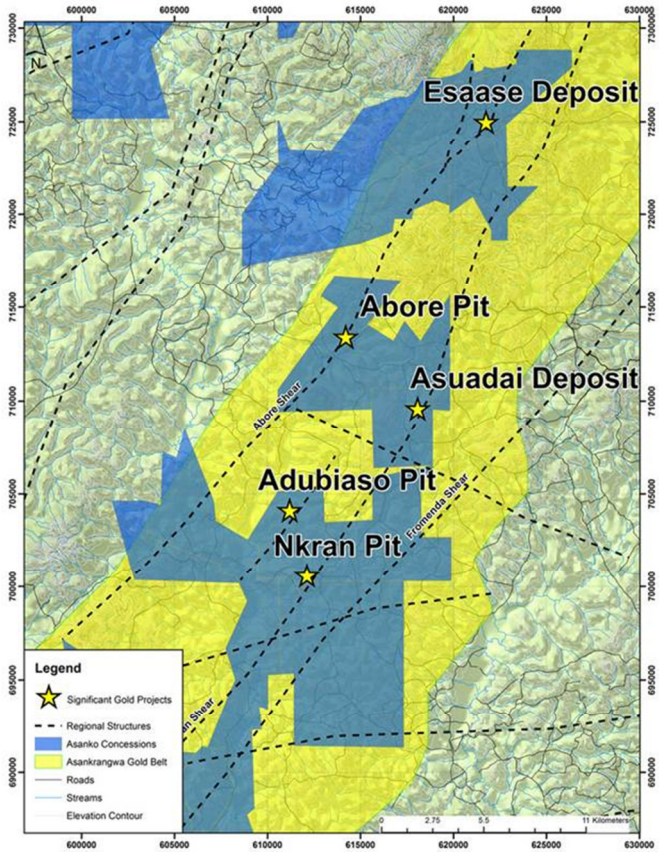
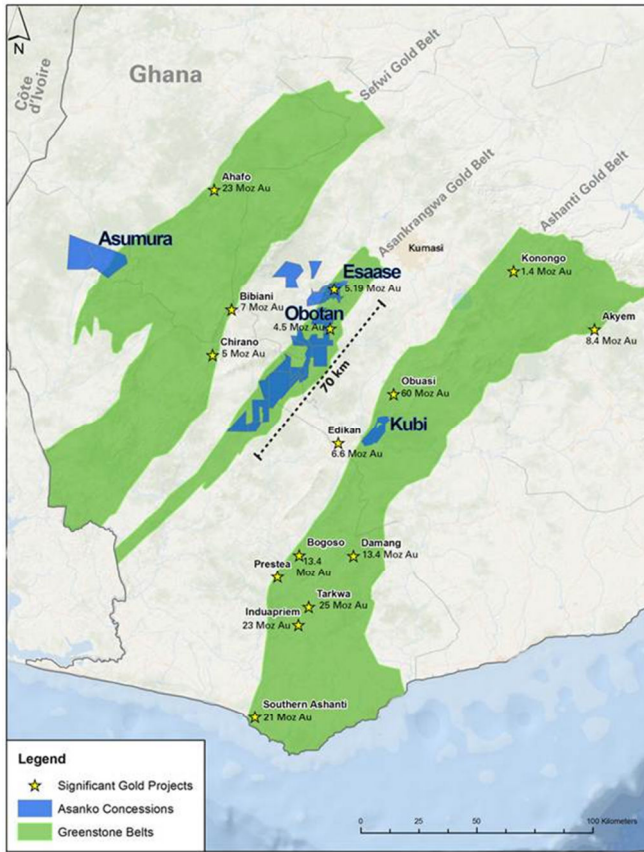


Figure 2: Location Plan showing combined “Asanko” Concessions and Project Deposits in Ghana
 Figure 3: PMI’s Obotan Gold Project and Keegan’s Esaase Gold Project located within 30km

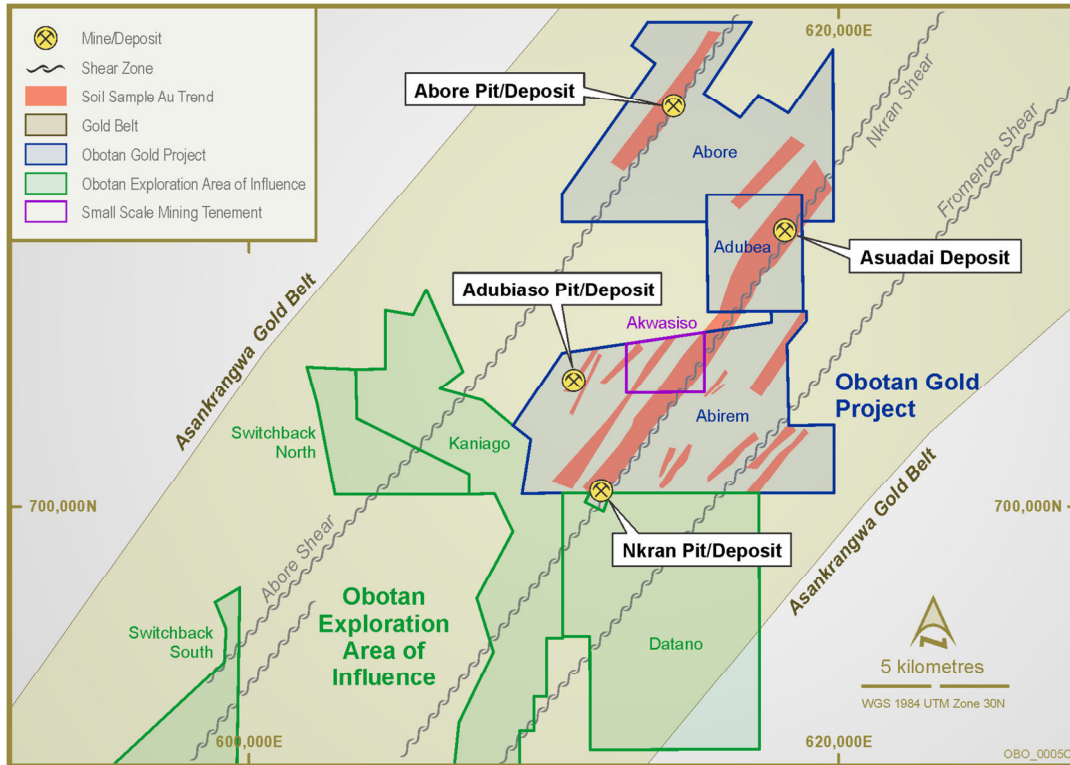


Figure 4: Obotan Project – Location of PMI Gold's Concessions and Project Deposits



Obotan Gold Project – Before and After Refurbishment.

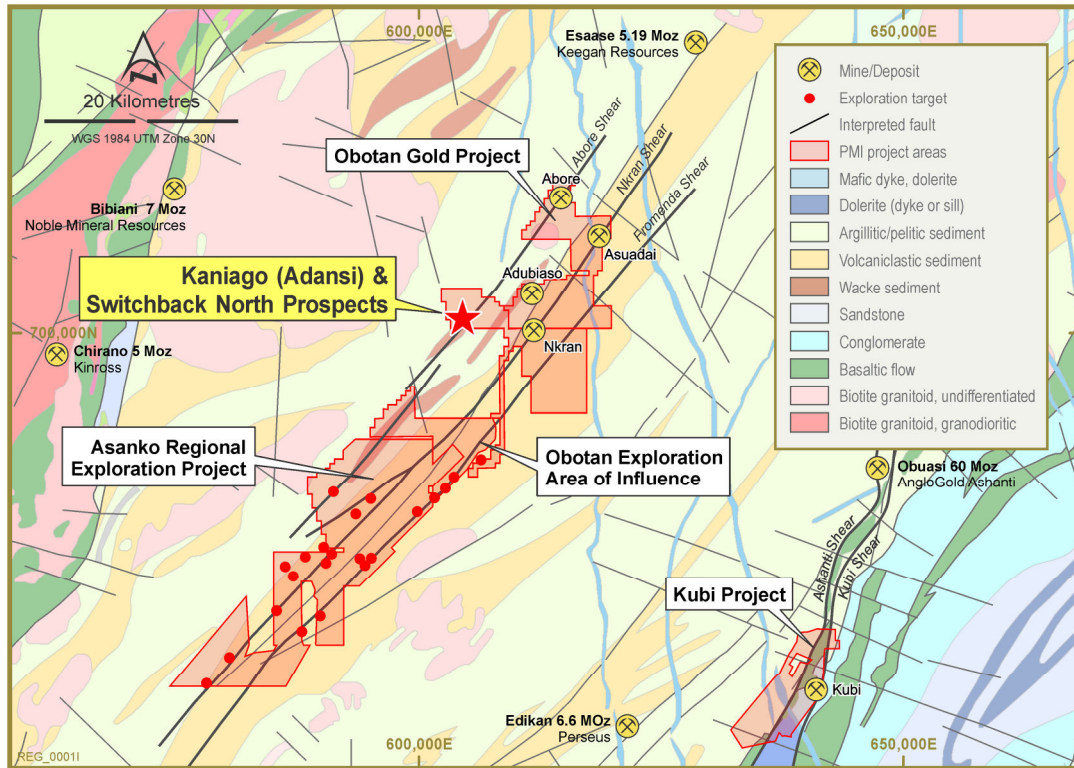


Figure 5: Location of the Kaniago (Adansi) Prospect

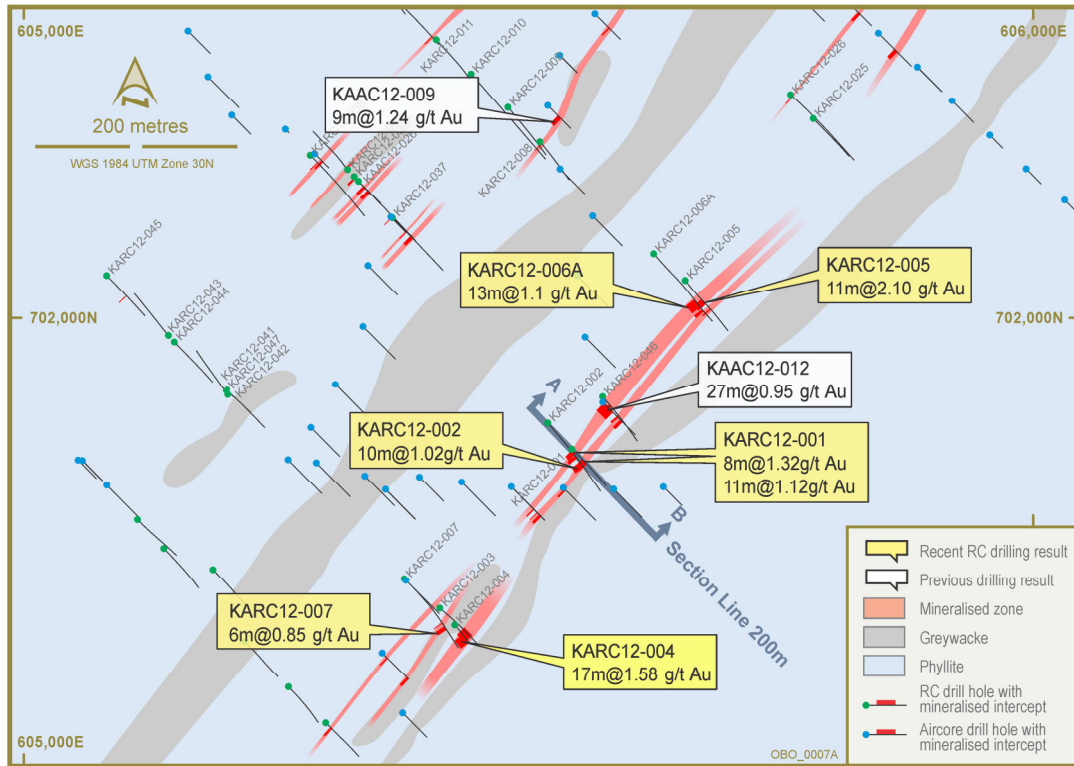


Figure 6: Collar Location Plan with Interpreted Mineralized Trends (>0.5g/t Au)

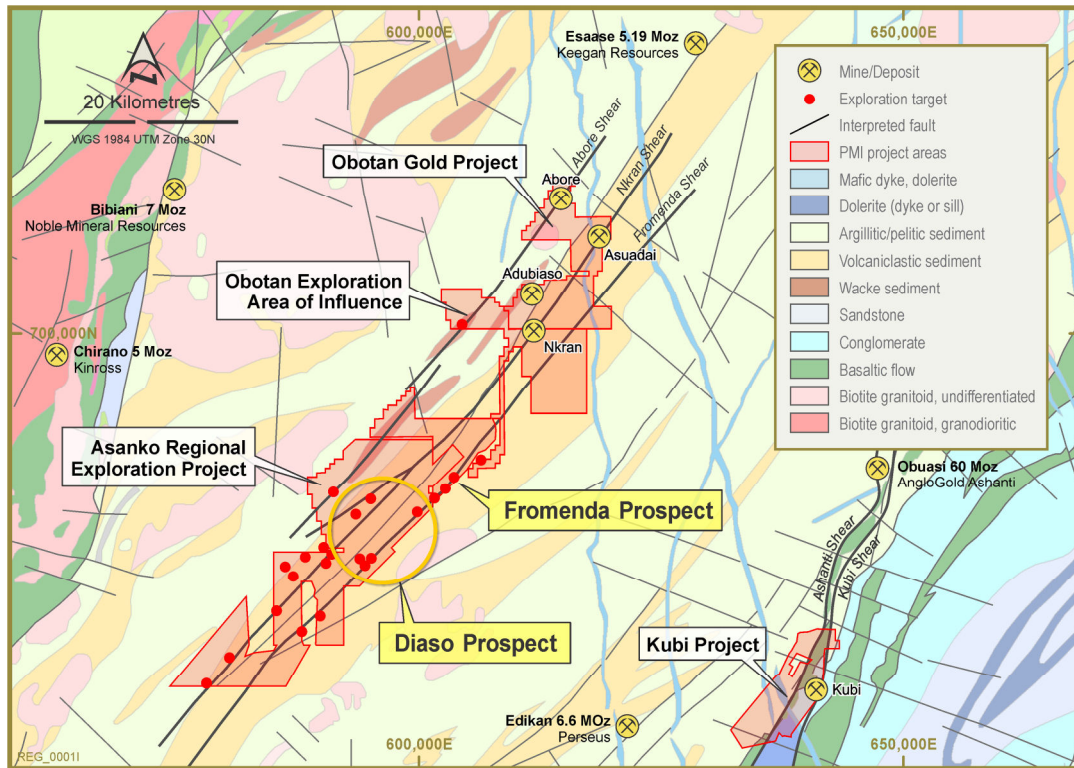


Figure 7: Location of Diaso Prospect within the Diaso-Afiefiso Concession

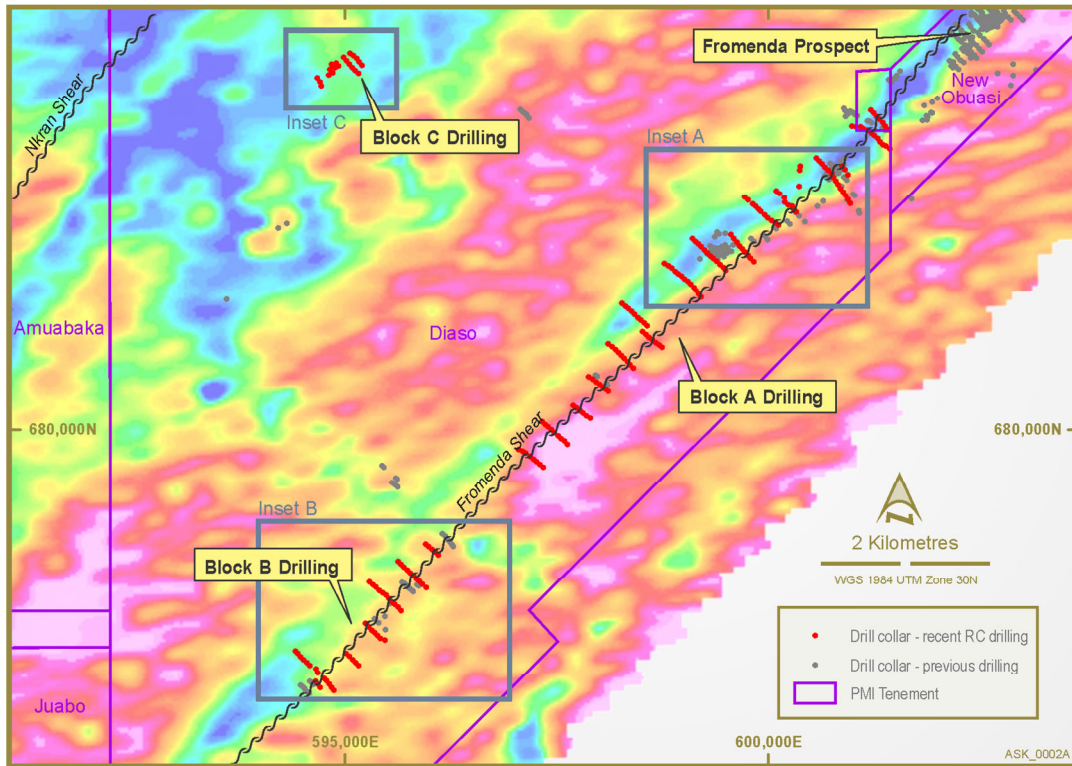


Figure 8: Diaso Prospect - Location of Target Areas with Aeromagnetics

Table 1: Significant Gold Intercepts Kaniago (Adansi) Prospect (>0.5g/t Au)

Note: True widths are approximately 60% to 70% of the length of the stated intersection lengths.

Hole ID	Easting (UTM)	Northing (UTM)	RL (UTM)	Dip	Azimuth	Depth From (m)	Depth To (m)	Interval (m)	Weighted Avg. Grade (g/t)
KARC12-001	605542.9	701869.8	182.2	-50	135	1	9	8	1.32
						22	33	11	1.12
KARC12-002	605519.1	701895.7	181.9	-50	135	67	72	5	0.51
						79	89	10	1.02
KARC12-003	605412.1	701712.4	200.9	-50	135	NSR			
KARC12-004	605427.0	701695.6	204.6	-50	135	20	37	17	1.58
KARC12-005	605655.1	702037.6	178.5	-50	135	31	32	1	0.63
						39	50	11	2.10
						60	62	2	1.80
						97	98	1	0.91
KARC12-006A	605624.0	702063.9	179.5	-50	135	34	35	1	0.57
						76	77	1	0.62
						92	105	13	1.10
						109	113	4	2.34
KARC12-007	605376.9	701741.7	190.8	-50	135	88	89	1	7.21
						94	100	6	0.85
KARC12-008	605511.2	702174.5	176.6	-50	135	4	5	1	11.61
KARC12-009	605479.6	702208.5	178.6	-50	135	NSR			
KARC12-010	605443.2	702241.8	181.8	-50	135	NSR			
KARC12-011	605408.6	702275.7	189.4	-50	135	NSR			
KARC12-012	605374.8	702309.6	194.1	-50	135	13	14	1	0.57
						65	66	1	4.21
						71	72	1	0.85
KARC12-013	605345.4	702339.8	192.2	-50	135	NSR			
KARC12-014	605304.2	702374.8	180.7	-50	135	NSR			
KARC12-015	605243.4	702444.5	160.9	-50	135	40	43	3	1.56
						55	59	4	1.12
KARC12-016	605274.3	702414.0	170.0	-50	135	NSR			
KARC12-017	605658.2	702379.6	179.7	-50	135	NSR			
KARC12-018	605613.2	702412.2	182.9	-50	135	53	56	3	0.77
KARC12-019	605556.8	702464.9	190.3	-50	135	NSR			
KARC12-020	605545.1	702488.0	192.9	-50	135	57	58	1	1.98
KARC12-021	605505.8	702536.0	189.1	-50	135	46	47	1	1.40
						61	62	1	0.79
KARC12-022	605474.6	702582.3	182.3	-50	135	NSR			
KARC12-023	605412.3	702619.1	181.9	-50	135	1	2	1	9.93
						8	12	4	1.30
KARC12-024	605370.2	702654.0	178.9	-50	135	20	22	2	3.22
KARC12-025	605782.1	702197.5	163.7	-50	135	37	38	1	0.52
KARC12-026	605759.6	702221.2	167.9	-50	135	4	5	1	1.49
KARC12-027	605901.1	702358.0	176.0	-50	135	27	29	2	2.32
						33	35	2	1.59
						52	53	1	1.18
KARC12-028	605872.4	702382.7	179.2	-50	135	10	12	2	1.48
						81	83	2	0.93
KARC12-029	605760.2	702549.6	179.0	-50	135	NSR			
KARC12-030	605705.9	702572.2	174.6	-50	135	NSR			
KARC12-031						NSR			
KARC12-032	605625.6	702630.5	172.9	-50	135	NSR			
KARC12-033	605591.3	702666.5	165.4	-50	135	NSR			

Hole ID	Easting (UTM)	Northing (UTM)	RL (UTM)	Dip	Azimuth	Depth From (m)	Depth To (m)	Interval (m)	Weighted Avg. Grade (g/t)
KARC12-034	605556.0	702702.5	165.3	-55	135	26	27	1	1
KARC12-035	605522.7	702734.4	169.1	-50	135	NSR			
KARC12-036	605714.8	702486.2	185.3	-50	135	NSR			
KARC12-037	605365.1	702099.3	188.5	-50	135	0	1	1	0.52
						39	44	5	1.86
						39	40	1	8.13
KARC12-038	605283.8	702161.2	211.9	-50	135	15	16	1	1.19
						32	33	1	0.51
						85	86	1	0.70
KARC12-039	605327.2	702140.1	203.2	-50	135	1	4	3	0.79
						20	24	4	0.94
						29	34	5	1.30
						114	115	1	15.60
KARC12-040	605320.8	702147.1	204.9	-50	315	3	5	2	0.50
						60	61	1	0.60
KARC12-041	605200.7	701928.0	201.1	-50	135	NSR			
KARC12-042	605202.0	701923.7	200.7	-50	315	NSR			
KARC12-043	605143.3	701982.7	219.7	-50	315	NSR			
KARC12-044	605149.0	701976.1	220.4	-50	135	NSR			
KARC12-045	605082.1	702042.4	192.6	-50	135	41	42	1	1.54
KARC12-046	605573.4	701921.5	178.0	-50	135	16	21	5	1.01
						38	41	3	0.59
KARC12-047	605200.8	701928.1	201.2	-50	135	NSR			
KARC12-048	605930.0	702862.1	145.6	-50	135	NSR			
KARC12-049	605964.2	702825.3	149.6	-50	135	53	57	4	0.86
KARC12-050	605989.0	702798.4	151.5	-50	135	NSR			
KARC12-051	606131.1	702642.8	160.4	-50	135	55	57	2	3.36
KARC12-052	606174.3	702616.6	167.5	-50	135	56	57	1	1
KARC12-053	606220.6	702597.8	173.9	-50	135	NSR			
KARC12-054	605901.6	702716.2	150.7	-50	135	9	16	7	2.43
						58	59	1	0.71
						82	83	1	0.76
KARC12-055	605893.6	702740.5	149.7	-50	135	26	27	1	0.86
						42	57	15	0.76
						66	68	2	0.63
						73	74	1	1.27
						83	86	3	0.74
KARC12-056	605884.9	702771.1	148.6	-50	135	65	69	4	1.70
						76	82	6	1.04
						91	93	2	1.21

Table 2: Dioso Prospect "Block A" Significant Gold Intercepts (>0.5g/t Au)

Note: True widths are approximately 60% to 70% of the length of the stated intersection lengths.

Hole ID	Easting (UTM)	Northing (UTM)	RL (UTM)	Dip	Azimuth	Depth From (m)	Depth To (m)	Interval (m)	Weighted Ave Grade (g/t)
DARC12-001	597344.1	679559.3	144.2	-50	135	NSR			
DARC12-002	597302.3	679597.1	156.3	-50	135	22	23	1	0.54
						26	31	5	0.54
						44	45	1	0.58
						46	47	1	0.60
DARC12-003	597266.2	679625.9	161.5	-50	135	30	31	1	0.60
						77	78	1	0.85
						81	82	1	1.10
						89	90	1	0.55
DARC12-004	597192.3	679689.9	159.1	-50	135	NSR			
DARC12-005	597101.7	679749.9	148.1	-50	135	NSR			
DARC12-006	597054.9	679773.5	145.0	-50	135	NSR			
DARC12-007	597136.9	679731.9	150.7	-50	135	NSR			
DARC12-008	597229.8	679653.6	163.2	-50	135	NSR			
DARC12-009	597633.4	679834.8	157.3	-50	135	NSR			
DARC12-010	597595.5	679870.8	155.6	-50	135	NSR			
DARC12-011	597558.0	679902.2	151.5	-50	135	5	6	1	0.72
DARC12-012	597521.6	679936.3	143.9	-50	135	48	49	1	0.73
DARC12-013	597476.7	679975.6	139.7	-50	135	NSR			
DARC12-014	597438.4	680007.6	138.1	-50	135	NSR			
DARC12-015	597401.2	680040.6	139.4	-50	135	NSR			
DARC12-016	597363.4	680070.8	141.7	-50	135	NSR			
DARC12-017	597330.6	680101.6	145.6	-50	135	NSR			
DARC12-018	597898.9	680142.5	166.2	-50	135	NSR			
DARC12-019	597852.3	680172.8	162.2	-50	135	38	39	1	0.54
						43	48	5	0.71
DARC12-020	597816.2	680201.1	156.5	-50	135	19	21	2	0.57
						66	67	1	0.69
						73	74	1	2.90
DARC12-021	597777.4	680231.0	150.3	-50	135	NSR			
DARC12-022	597699.5	680291.1	143.8	-50	135	NSR			
DARC12-023	597736.9	680262.1	143.7	-50	135	NSR			
DARC12-024	598078.7	680491.0	144.0	-50	135	34	35	1	0.71
DARC12-025	598114.1	680463.8	154.5	-50	135	33	34	1	0.57
DARC12-026	598038.9	680522.0	148.0	-50	135	NSR			
DARC12-027	598007.8	680546.7	142.8	-50	135	NSR			
DARC12-028	597966.0	680576.1	144.6	-50	135	NSR			
DARC12-029	597928.3	680608.9	137.2	-50	135	NSR			
DARC12-030	597881.5	680640.6	130.2	-50	135	NSR			
DARC12-031	598110.2	681021.1	145.8	-50	135	18	19	1	0.75
DARC12-032	598410.6	680739.9	148.6	-50	135	NSR			
DARC12-033	598371.4	680778.1	144.4	-50	135	NSR			
DARC12-034	598338.8	680815.4	142.9	-50	135	NSR			
DARC12-035	598299.7	680853.2	142.5	-50	135	NSR			
DARC12-036	598265.6	680885.6	143.2	-50	135	NSR			
DARC12-037	598230.6	680921.5	143.9	-50	135	NSR			
DARC12-038	598197.8	680957.8	146.0	-50	135	NSR			
DARC12-039	598159.9	680991.4	148.0	-50	135	50	51	1	0.56
DARC12-040	598276.5	681498.8	137.1	-50	135	NSR			
DARC12-041	598314.6	681465.3	138.2	-50	135	NSR			
DARC12-042	598350.9	681433.6	137.9	-50	135	NSR			

Hole ID	Easting (UTM)	Northing (UTM)	RL (UTM)	Dip	Azimuth	Depth From (m)	Depth To (m)	Interval (m)	Weighted Ave Grade (g/t)
DARC12-043	598388.7	681399.5	139.2	-50	135	NSR			
DARC12-044	598425.5	681366.2	139.5	-50	135	50	51	1	0.85
DARC12-045	598464.7	681330.7	142.2	-50	135	40	46	6	0.93
						58	59	1	0.87
						63	64	1	0.57
DARC12-046	598498.5	681299.1	145.1	-50	135	26	27	1	1.36
DARC12-047	598535.7	681264.8	147.2	-50	135	62	63	1	0.64
DARC12-048	598570.3	681232.6	149.4	-50	135	NSR			
DARC12-049	598749.8	680981.3	144.6	-50	135	NSR			
DARC12-050	598710.7	681007.1	141.7	-50	135	NSR			
DARC12-051	598671.6	681036.0	139.5	-50	135	NSR			
DARC12-052	598631.7	681068.8	138.6	-50	135	NSR			
DARC12-053	598594.6	681100.5	139.0	-50	135	NSR			
DARC12-054	598558.1	681131.9	141.2	-50	135	NSR			
DARC12-055	598520.5	681163.8	141.2	-50	135	NSR			
DARC12-056	599210.2	681572.1	141.1	-50	135	NSR			
DARC12-057	598776.2	681970.4	144.8	-50	135	70	87	17	0.75
DARC12-058	598822.5	681942.9	146.3	-50	135	8	20	12	2.06
						14	16	2	5.02
						25	26	1	0.54
						36	38	2	0.70
						85	86	1	1.28
						101	107	6	0.85
DARC12-059	598861.7	681915.1	153.0	-50	135	3	6	3	0.80
DARC12-060	598901.5	681879.1	152.5	-50	135	NSR			
DARC12-061	598940.2	681849.4	162.6	-50	135	28	30	2	0.93
DARC12-062	598975.6	681820.6	170.4	-50	135	NSR			
DARC12-063	599012.6	681791.1	162.6	-50	135	64	65	1	1.25
DARC12-064	599052.5	681761.9	156.4	-50	135	NSR			
DARC12-065	599089.7	681728.5	150.5	-50	135	NSR			
DARC12-066	599123.6	681689.3	147.9	-50	135	28	29	1	0.53
DARC12-067	599150.5	681651.7	143.5	-50	135	55	56	1	0.61
DARC12-068	599184.2	681609.1	141.6	-50	135	NSR			
DARC12-069	599107.0	682260.1	143.0	-50	135	NSR			
DARC12-070	599139.7	682230.1	142.9	-50	135	NSR			
DARC12-071	599172.2	682199.2	143.3	-50	135	49	50	1	0.61
DARC12-072	599208.7	682166.8	148.0	-50	135	NSR			
DARC12-073	599247.2	682128.9	147.7	-50	135	0	1	1	7.61
DARC12-074	599284.9	682093.0	157.2	-50	135	NSR			
DARC12-075	599314.8	682058.8	161.3	-50	135	30	31	1	0.54
						66	67	1	0.50
						69	70	1	0.71
						74	78	4	0.62
DARC12-076	599502.0	681890.6	171.4	-50	135	NSR			
DARC12-077	599471.4	681921.0	165.8	-50	135	NSR			
DARC12-078	599430.9	681957.7	153.1	-50	135	NSR			
DARC12-079	599388.9	682000.4	157.0	-50	135	2	3	1	0.80
						21	22	1	13.55
DARC12-080	599351.9	682029.9	164.3	-50	135	56	58	2	0.53
						62	63	1	0.82
DIRC12-001	601214.2	683773.0	156.2	-50	135	NSR			
DIRC12-002	601246.1	683739.1	156.2	-50	135	NSR			
DIRC12-003	601280.7	683700.6	160.4	-50	135	13	14	1	0.75
DIRC12-004	601311.6	683664.1	166.3	-50	135	NSR			
DIRC12-005	601351.9	683622.5	169.8	-50	135	68	69	1	2.91

Hole ID	Easting (UTM)	Northing (UTM)	RL (UTM)	Dip	Azimuth	Depth From (m)	Depth To (m)	Interval (m)	Weighted Ave Grade (g/t)
DIRC12-006	601383.2	683584.8	171.8	-50	135	NSR			
DIRC12-007	601415.1	683544.0	169.3	-50	135	NSR			
DIRC12-008	601294.2	683442.5	148.6	-50	135	NSR			
DIRC12-009	601324.2	683399.6	148.0	-50	135	77	78	1	1.17
DIRC12-010	601356.4	683369.8	149.5	-50	135	25	26	1	0.56
						52	53	1	0.52
DIRC12-011	601390.0	683354.6	152.1	-50	135	15	19	4	0.80
						26	27	1	1.19
						75	76	1	0.69
DIRC12-012	601439.6	683316.3	149.7	-50	135	71	72	1	1.48
						83	86	3	0.54
DIRC12-013	601256.2	683471.9	147.3	-50	135	0	1	1	0.53
DIRC12-014	601222.4	683500.9	147.1	-50	135	NSR			
DIRC12-015	601175.2	683535.1	144.0	-50	135	NSR			
DIRC12-016	601121.3	683555.1	141.8	-50	135	46	47	1	1.28
DIRC12-017	601088.7	683574.6	141.1	-50	135	NSR			
DIRC12-018	601036.5	683574.7	140.4	-50	135	NSR			
DIRC12-019	600988.0	683586.2	141.3	-50	135	NSR			
DIRC12-020	600968.7	682679.0	154.0	-50	135	NSR			
DIRC12-021	599595.0	682264.3	139.4	-50	135	3	4	1	0.96
						82	94	12	0.87
DIRC12-022	599557.8	682311.6	144.5	-50	135	7	8	1	0.52
						100	101	1	0.55
						106	117	11	0.77
						122	127	5	0.93
DIRC12-023	599632.1	682214.1	156.6	-50	135	77	79	2	0.69
						84	87	3	0.55
DIRC12-024	599662.1	682176.3	156.2	-50	135	NSR			
DIRC12-025	599693.1	682139.8	157.1	-50	135	NSR			
DIRC12-026	599723.9	682105.2	149.9	-50	135	32	33	1	0.54
DIRC12-027	599760.7	682063.4	162.4	-50	135	NSR			
DIRC12-028	599790.0	682031.0	163.4	-50	135	NSR			
DIRC12-029	599829.5	681990.4	150.7	-50	135	NSR			
DIRC12-030	600376.9	683115.8	137.0	-50	135	80	81	1	0.71
DIRC12-031	600123.1	682418.6	151.0	-50	135	NSR			
DIRC12-032	600087.0	682445.6	150.8	-50	135	NSR			
DIRC12-033	600040.1	682471.2	153.0	-50	135	20	25	5	1.06
						40	41	1	0.59
DIRC12-034	599996.6	682505.1	144.5	-50	135	NSR			
DIRC12-035	599958.2	682538.5	142.5	-50	135	NSR			
DIRC12-036	599912.5	682580.3	147.1	-50	135	NSR			
DIRC12-037	599883.4	682609.9	157.3	-50	135	NSR			
DIRC12-038	599814.9	682667.5	170.7	-50	135	NSR			
DIRC12-039	599765.8	682714.8	160.5	-50	135	1	2	1	0.59
DIRC12-040	599724.0	682752.3	153.4	-50	135	NSR			
DIRC12-041	600570.8	683210.7	151.4	-50	135	NSR			
DIRC12-042	600603.5	683177.2	153.7	-50	135	NSR			
DIRC12-043	600638.6	683142.0	152.4	-50	135	NSR			
DIRC12-044	600670.7	683099.6	147.2	-50	135	47	48	1	1.16
DIRC12-045	600712.1	683066.7	151.8	-50	135	22	23	1	1.22
DIRC12-046	600750.1	683028.8	149.0	-50	135	55	58	3	16.43
					Including	55	56	1	48.41
DIRC12-047	600775.8	682982.0	146.1	-50	135	NSR			
DIRC12-048	600801.1	682940.6	148.1	-50	135	NSR			

Hole ID	Easting (UTM)	Northing (UTM)	RL (UTM)	Dip	Azimuth	Depth From (m)	Depth To (m)	Interval (m)	Weighted Ave Grade (g/t)
DIRC12-049	600828.4	682896.8	151.5	-50	135			NSR	
DIRC12-050	600857.2	682852.9	152.8	-50	135			NSR	
DIRC12-051	600887.7	682809.9	152.0	-50	135			NSR	
DIRC12-052	600915.0	682769.2	155.9	-50	135			NSR	
DIRC12-053	600940.0	682726.2	156.8	-50	135			NSR	
DIRC12-054	600876.2	683116.0	150.5	-50	135			NSR	
DIRC12-055	600906.0	683076.9	154.4	-50	135			NSR	
DIRC12-056	600945.0	683013.3	165.2	-50	135			NSR	
DIRC12-057	600375.1	683066.1	134.3	-50	135			NSR	
DIRC12-058	600366.1	682878.6	135.2	-50	135			NSR	
DIRC12-059	599850.7	682639.9	167.9	-50	135			NSR	
DIRC12-060	600095.6	682822.5	148.7	-50	135			NSR	
DIRC12-061	600134.5	682794.4	149.2	-50	135			NSR	
DIRC12-062	600190.7	682746.1	135.4	-50	135			NSR	
DIRC12-063	600196.7	682690.6	136.5	-50	135	74	75	1	0.74
DIRC12-064	600330.7	682575.8	145.4	-50	135	1	2	1	0.74
DIRC12-065	600297.8	682610.5	143.1	-50	135	37	38	1	1.09
DIRC12-066	600238.6	682653.2	137.7	-50	135			NSR	
DIRC12-067	600287.2	682640.3	141.9	-50	135			NSR	

Table 3: Diao Prospect "Block B" Significant Gold Intercepts (>0.5g/t Au)

Note: True widths are approximately 60% to 70% of the length of the stated intersection lengths.

Hole ID	Easting (UTM)	Northing (UTM)	RL (UTM)	Dip	Azimuth	Depth From (m)	Depth To (m)	Interval (m)	Weighted Ave Grade (g/t)
DARC12-081	595958.5	678652.2	134.3	-50	135			NSR	
DARC12-082	595991.4	678624.2	130.7	-50	135			NSR	
DARC12-083	596104.0	678527.2	122.0	-50	135			NSR	
DARC12-084	596071.5	678561.6	123.9	-50	135	24	25	1	0.56
DARC12-085	596032.6	678590.5	130.0	-50	135	70	71	1	0.54
DARC12-086	595631.1	678451.1	148.9	-50	135			NSR	
DARC12-087	595667.5	678414.1	147.4	-50	135			NSR	
DARC12-088	595700.5	678378.9	143.6	-50	135			NSR	
DARC12-089	595738.3	678346.5	139.5	-50	135			NSR	
DARC12-090	595774.4	678312.4	141.2	-50	135	45	47	2	2.50
DARC12-091	595812.8	678278.5	137.2	-50	135			NSR	
DARC12-092	595848.5	678239.1	143.5	-50	135	27	30	3	32.89
					Including	27	28	1	73.14
DARC12-093	595961.7	678138.4	136.8	-50	135			NSR	
DARC12-094	595917.7	678178.9	146.2	-50	135	27	29	2	4.89
						46	52	6	0.72
DARC12-095	595883.8	678210.2	146.7	-50	135			NSR	
DARC12-096	595249.0	677708.9	131.8	-50	135			NSR	
DARC12-097	595284.0	677671.2	128.3	-50	135			NSR	
DARC12-098	595319.6	677633.7	121.0	-50	135			NSR	
DARC12-099	595356.8	677600.4	120.8	-50	135			NSR	
DARC12-100	595477.1	677516.1	121.0	-50	135			NSR	
DARC12-101	595424.8	677535.9	120.9	-50	135			NSR	
DARC12-102	595389.8	677569.3	121.4	-50	135			NSR	
DARC12-103	594423.3	677384.2	109.5	-50	135			NSR	
DARC12-104	594448.2	677358.5	112.7	-50	135			NSR	
DARC12-105	594483.3	677321.5	121.6	-50	135			NSR	

Hole ID	Easting (UTM)	Northing (UTM)	RL (UTM)	Dip	Azimuth	Depth From (m)	Depth To (m)	Interval (m)	Weighted Ave Grade (g/t)
DARC12-106	594516.4	677284.7	121.5	-50	135	18	19	1	0.77
						21	22	1	0.64
						24	26	2	0.56
						30	31	1	0.83
DARC12-107	594554.4	677250.0	117.1	-50	135	NSR			
DARC12-108	594586.5	677214.5	113.7	-50	135	NSR			
DARC12-109	594681.4	677130.9	112.9	-50	135	NSR			
DARC12-110	594661.2	677178.7	112.0	-50	135	NSR			
DARC12-111	595018.7	677361.2	133.8	-50	135	45	46	1	1.19
DARC12-112	595054.0	677324.6	136.0	-50	135	36	37	1	0.62
						44	45	1	1.45
						60	61	1	5.58
DARC12-113	595095.8	677282.1	135.0	-50	135	12	13	1	3.13
DARC12-114	594788.6	677035.8	155.1	-50	135	NSR			
DARC12-115	594757.2	677059.3	152.2	-50	135	31	32	1	3.87
						40	44	4	0.56
DIRC12-068	595667.3	677862.9	152.5	-50	135	NSR			
DIRC12-069	595631.1	677898.3	148.1	-50	135	5	6	1	0.62
DIRC12-070	595593.6	677932.8	146.8	-50	135	NSR			
DIRC12-071	595555.3	677963.8	141.6	-50	135	NSR			
DIRC12-072	595526.3	678005.0	133.2	-50	135	NSR			
DIRC12-073	595488.1	678041.9	130.8	-50	135	NSR			
DIRC12-074	595446.6	678074.8	129.8	-50	135	NSR			
DIRC12-075	595411.0	678105.7	124.9	-50	135	NSR			
DIRC12-076	595370.1	678142.5	123.4	-50	135	NSR			
DIRC12-077	595334.8	678172.2	125.0	-50	135	NSR			
DIRC12-078	595294.6	678206.7	128.3	-50	135	NSR			
DIRC12-079	594875.9	676916.5	131.6	-50	135	NSR			
DIRC12-080	594845.4	676955.7	140.4	-50	135	61	62	1	0.57
DIRC12-081	594816.4	676993.2	147.9	-50	135	54	56	2	0.96
DIRC12-082	594660.2	677024.5	143.1	-50	135	NSR			
DIRC12-083	594683.9	676991.9	146.3	-50	135	38	39	1	7.37
						75	76	1	6.07
DIRC12-084	594708.6	676951.8	143.5	-50	135	NSR			
DIRC12-085	595127.8	677254.6	142.1	-50	135	NSR			
DIRC12-086	595161.9	677214.2	137.7	-50	135	NSR			
DIRC12-087	594677.9	684160.3	127.9	-50	135	NSR			
DIRC12-088	594709.0	684111.4	130.1	-50	135	NSR			

Table 4: Dioso Prospect "Block C" Significant Gold Intercepts (>0.5g/t Au)

Note: True widths are approximately 60% to 70% of the length of the stated intersection lengths.

Hole ID	Easting (UTM)	Northing (UTM)	RL (UTM)	Dip	Azimuth	Depth From (m)	Depth To (m)	Interval (m)	Weighted Ave Grade (g/t)
DIRC12-089	594857.2	684220.9	143.4	-50	135	46	66	20	1.40
						54	55	1	5.04
						58	59	1	6.39
						70	71	1	3.08
DIRC12-090	594723.2	684064.5	137.9	-50	135	NSR			
DIRC12-091	594812.5	684191.0	133.2	-50	135	47	48	1	0.52
						56	57	1	0.88
DIRC12-092	594824.4	684261.2	142.0	-50	135	129	130	1	2.80
						140	147	7	2.53
						143	144	1	8.97
DIRC12-093	594886.1	684281.3	155.0	-50	135	99	100	1	0.54
						120	143	23	1.26
						147	148	1	3.22
						154	157	3	1.59
						161	162	1	0.83
						166	171	5	0.63
DIRC12-094	594930.9	684299.6	158.3	-50	135	97	113	16	0.70
						129	135	6	1.86
						131	132	1	7.39
DIRC12-095	594847.7	684319.3	146.9	-50	135	137	138	1	0.53
DIRC12-096	594992.2	684400.2	145.1	-50	135	NSR			
DIRC12-097	595025.8	684359.3	157.2	-50	135	107	110	3	0.54
DIRC12-098	595057.9	684322.9	157.8	-50	135	NSR			
DIRC12-099	595092.9	684282.6	151.4	-50	135	NSR			
DIRC12-100	595127.7	684244.2	147.6	-50	135	NSR			
DIRC12-101	594899.9	684336.0	154.7	-50	135	133	144	11	4.35
						133	135	2	16.87
						157	160	3	2.09
						164	167	3	2.73
DIRC12-102	595164.1	684215.4	141.0	-50	135	NSR			
DIRC12-103	595062.6	684448.7	128.8	-50	135	NSR			
DIRC12-104	595103.8	684420.8	128.9	-50	135	96	99	3	1.90
DIRC12-105	595145.1	684391.0	129.5	-50	135	NSR			
DIRC12-106	595174.1	684347.5	130.7	-50	135	NSR			
DIRC12-107	595206.0	684310.4	130.9	-50	135	NSR			