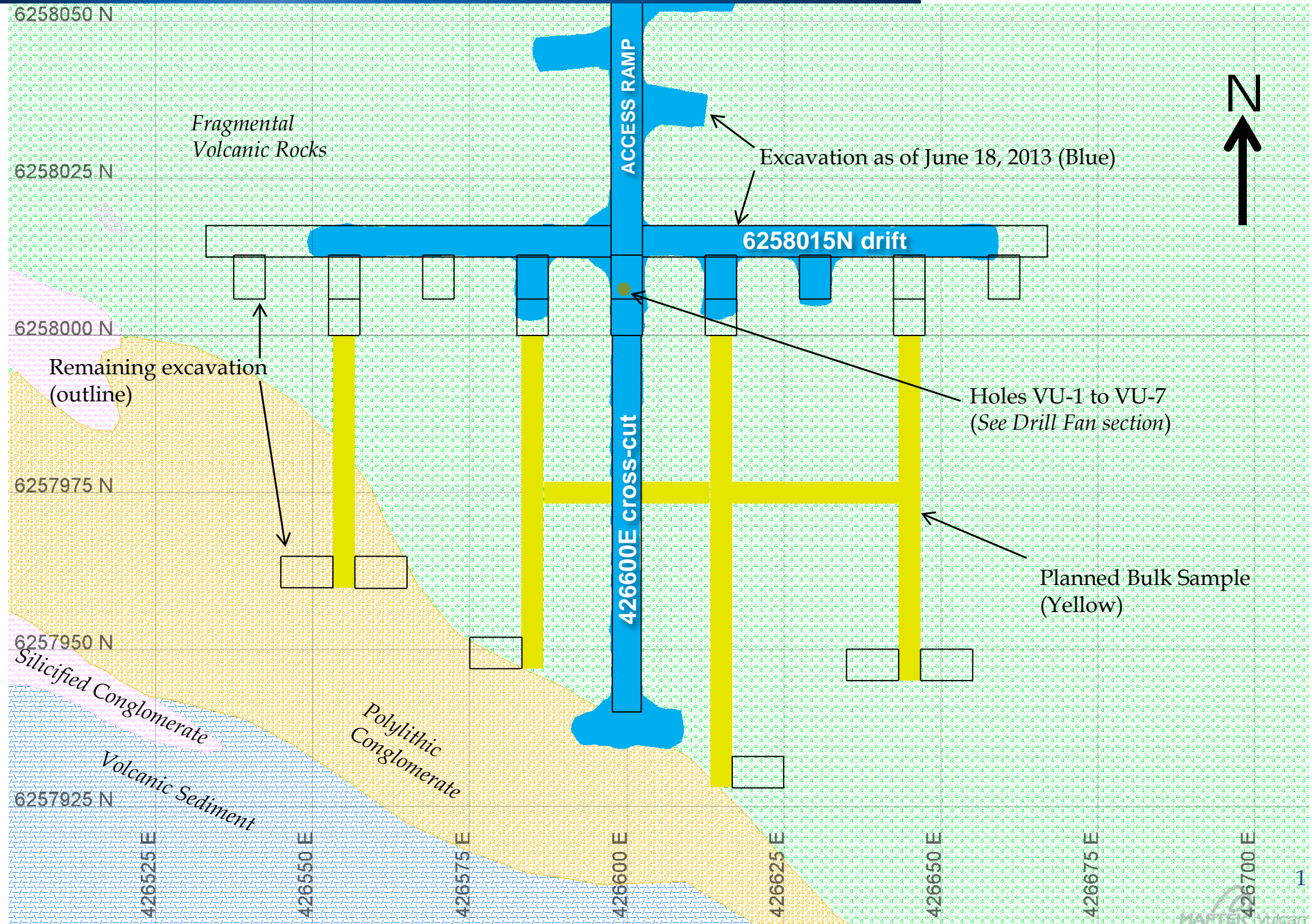
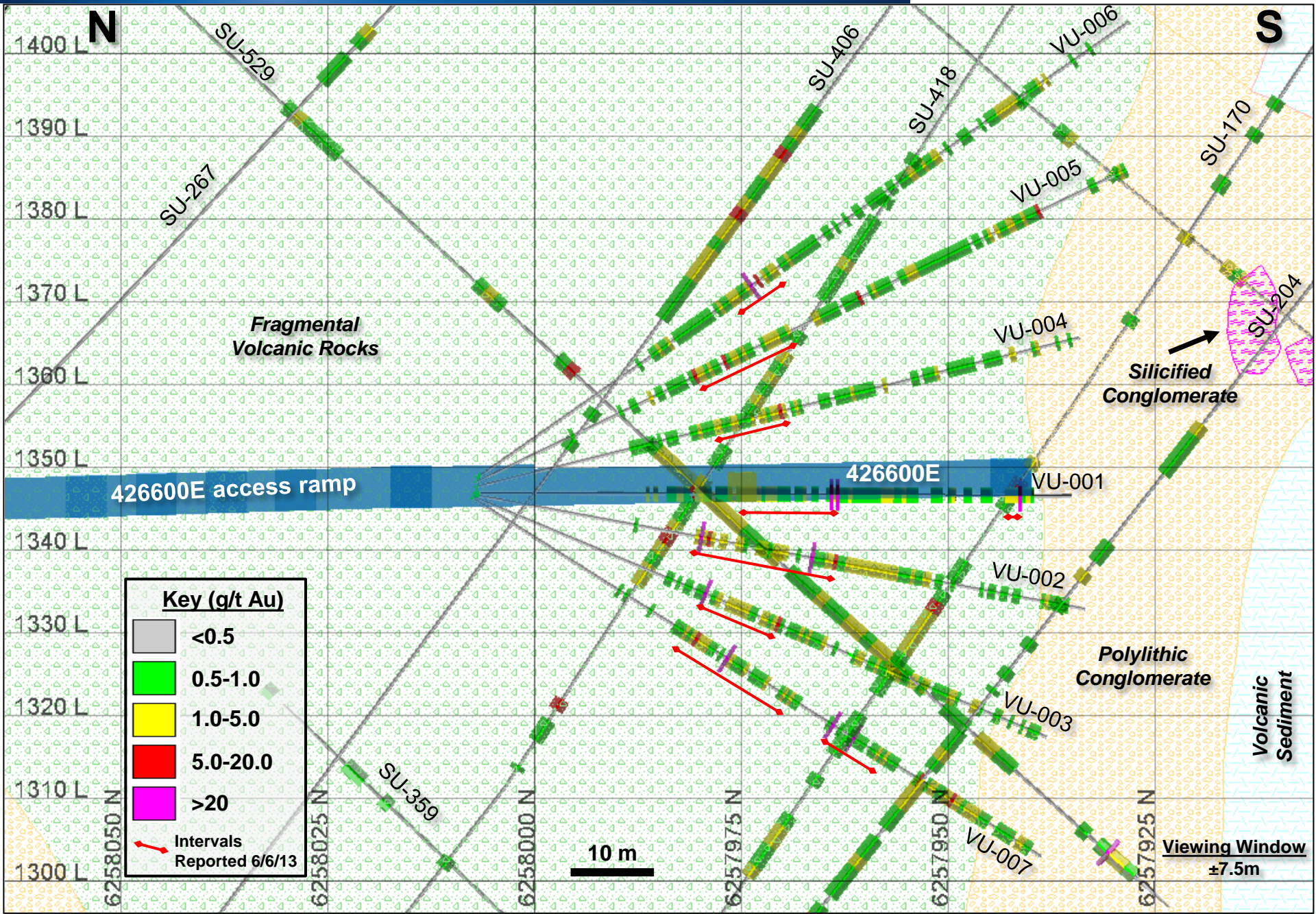


BLAST PROGRESS: 1345M LEVEL



426600E CROSSCUT - DRILL FAN



N

S

1400 L
1390 L
1380 L
1370 L
1360 L
1350 L
1340 L
1330 L
1320 L
1310 L
1300 L

SU-529
SU-267
SU-406
SU-418
SU-170
SU-359
SU-204
VU-006
VU-005
VU-004
VU-001
VU-002
VU-003
VU-007






Fragmental
Volcanic Rocks


Silicified
Conglomerate

426600E access ramp

426600E

Key (g/t Au)

-  <0.5
-  0.5-1.0
-  1.0-5.0
-  5.0-20.0
-  >20

 Intervals
Reported 6/6/13

10 m

Viewing Window
±7.5m

Volcanic
Sediment

6258050 N
6258025 N
6258000 N
6257975 N
6257950 N
6257925 N