

Resources Data for the Hakkari Zinc Deposit.

TABLE 1 – PENTAGON INFERRED MINERALISATION

| In Situ Pentagon Main Mineralisation Inferred | | | | | | | |
|--|--------|---------|---------|--------|---------|---------|---------|
| Cut Off | Tonnes | Zn_perc | Pb_perc | Ag_ppm | Cu_perc | Fe_perc | DENSITY |
| Zn % | 000 | % | % | % | % | % | g/cc |
| 0.5 | 198.2 | 10.53 | 1.11 | 14.73 | 0.0012 | 8.43 | 2.37 |
| 1 | 197.5 | 10.56 | 1.11 | 14.75 | 0.0012 | 8.45 | 2.37 |
| 1.5 | 196.6 | 10.61 | 1.12 | 14.79 | 0.0012 | 8.48 | 2.37 |
| 2 | 167.4 | 12.13 | 1.25 | 16.27 | 0.0013 | 9.65 | 2.36 |
| 2.5 | 157.6 | 12.75 | 1.31 | 16.85 | 0.0013 | 10.12 | 2.36 |
| 3 | 154.0 | 12.98 | 1.33 | 17.03 | 0.0013 | 10.20 | 2.37 |
| 3.5 | 150.8 | 13.19 | 1.35 | 17.18 | 0.0013 | 10.27 | 2.37 |
| 4 | 142.9 | 13.71 | 1.39 | 17.48 | 0.0012 | 10.34 | 2.37 |
| 4.5 | 137.6 | 14.08 | 1.42 | 17.57 | 0.0012 | 10.40 | 2.38 |
| 5 | 133.9 | 14.34 | 1.44 | 17.63 | 0.0012 | 10.43 | 2.38 |
| 5.5 | 131.2 | 14.52 | 1.46 | 17.66 | 0.0012 | 10.48 | 2.38 |
| 6 | 125.9 | 14.89 | 1.49 | 17.52 | 0.0012 | 10.61 | 2.38 |
| 6.5 | 123.4 | 15.06 | 1.51 | 17.42 | 0.0012 | 10.68 | 2.39 |
| 7 | 121.4 | 15.20 | 1.53 | 17.48 | 0.0012 | 10.76 | 2.39 |
| 7.5 | 119.0 | 15.36 | 1.55 | 17.51 | 0.0012 | 10.83 | 2.39 |
| 8 | 118.0 | 15.43 | 1.55 | 17.49 | 0.0012 | 10.88 | 2.39 |
| 8.5 | 116.2 | 15.54 | 1.56 | 17.49 | 0.0012 | 10.99 | 2.38 |
| 9 | 116.2 | 15.54 | 1.56 | 17.49 | 0.0012 | 10.99 | 2.38 |
| 9.5 | 115.3 | 15.59 | 1.57 | 17.52 | 0.0012 | 11.03 | 2.38 |
| 10 | 114.0 | 15.65 | 1.57 | 17.51 | 0.0012 | 11.05 | 2.38 |
| 10.5 | 112.5 | 15.73 | 1.58 | 17.57 | 0.0012 | 11.08 | 2.38 |
| 11 | 111.3 | 15.78 | 1.58 | 17.60 | 0.0012 | 11.06 | 2.39 |
| 11.5 | 110.1 | 15.83 | 1.57 | 17.62 | 0.0012 | 11.03 | 2.39 |
| 12 | 108.0 | 15.91 | 1.57 | 17.61 | 0.0012 | 10.99 | 2.39 |
| 12.5 | 103.2 | 16.07 | 1.58 | 17.62 | 0.0012 | 11.10 | 2.39 |
| 13 | 97.9 | 16.26 | 1.60 | 17.64 | 0.0012 | 11.28 | 2.39 |
| 13.5 | 94.4 | 16.37 | 1.60 | 17.61 | 0.0012 | 11.30 | 2.39 |
| 14 | 89.6 | 16.50 | 1.61 | 17.57 | 0.0012 | 11.41 | 2.39 |
| 14.5 | 86.5 | 16.58 | 1.60 | 17.56 | 0.0012 | 11.35 | 2.40 |
| 15 | 82.2 | 16.68 | 1.61 | 17.55 | 0.0012 | 11.41 | 2.40 |
| 15.5 | 75.5 | 16.81 | 1.65 | 17.64 | 0.0012 | 11.81 | 2.39 |
| 16 | 54.2 | 17.20 | 1.95 | 17.98 | 0.0014 | 14.86 | 2.28 |
| 16.5 | 33.9 | 17.86 | 2.55 | 18.64 | 0.0018 | 21.07 | 2.05 |
| 17 | 32.9 | 17.89 | 2.56 | 18.72 | 0.0018 | 21.15 | 2.05 |
| 17.5 | 21.7 | 18.16 | 2.60 | 19.25 | 0.0017 | 21.32 | 2.07 |

GRAPH 1 – PENTAGON GRADE-TONNAGE CURVE

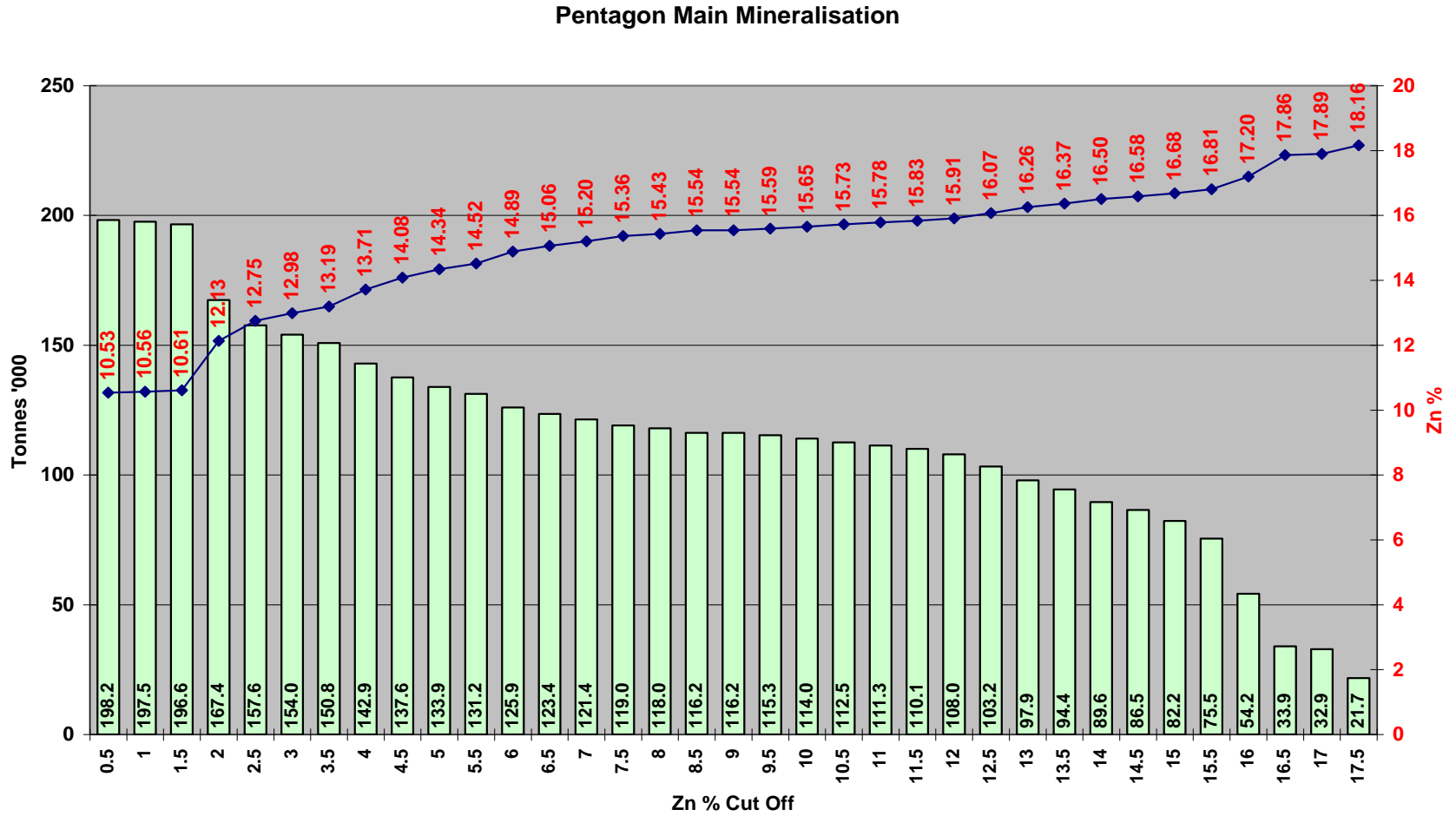


TABLE 2 – LICENCE 5 MAIN INFERRED MINERALISATION

| In-situ License 5 Main Mineralisation Inferred | | | | | | | |
|---|--------|---------|---------|--------|---------|---------|---------|
| Cut Off | Tonnes | Zn_perc | Pb_perc | Ag_ppm | Cu_perc | Fe_perc | DENSITY |
| Zn % | 000 | % | % | % | % | % | g/cc |
| 0.5 | 1937.3 | 1.79 | 0.34 | 1.63 | 0.0011 | 22.91 | 1.92 |
| 1 | 1492.7 | 2.06 | 0.40 | 1.83 | 0.0011 | 24.86 | 1.89 |
| 1.5 | 714.8 | 2.95 | 0.52 | 2.34 | 0.0012 | 27.52 | 1.85 |
| 2 | 445.6 | 3.67 | 0.57 | 2.82 | 0.0010 | 25.79 | 1.93 |
| 2.5 | 276.0 | 4.57 | 0.64 | 3.32 | 0.0009 | 22.58 | 2.08 |
| 3 | 113.5 | 7.32 | 0.78 | 4.87 | 0.0010 | 17.03 | 2.09 |
| 3.5 | 94.9 | 8.12 | 0.81 | 4.69 | 0.0010 | 16.35 | 2.13 |
| 4 | 80.4 | 8.93 | 0.81 | 4.70 | 0.0010 | 15.68 | 2.16 |
| 4.5 | 77.5 | 9.11 | 0.81 | 4.64 | 0.0010 | 15.44 | 2.16 |
| 5 | 72.9 | 9.38 | 0.83 | 4.50 | 0.0011 | 15.70 | 2.16 |
| 5.5 | 65.5 | 9.84 | 0.87 | 4.48 | 0.0011 | 16.37 | 2.16 |
| 6 | 56.2 | 10.52 | 0.92 | 4.23 | 0.0011 | 17.21 | 2.15 |
| 6.5 | 51.5 | 10.91 | 0.94 | 4.47 | 0.0011 | 17.05 | 2.16 |
| 7 | 47.8 | 11.23 | 0.96 | 4.64 | 0.0011 | 16.82 | 2.17 |
| 7.5 | 44.3 | 11.56 | 0.98 | 4.77 | 0.0011 | 16.92 | 2.18 |
| 8 | 40.4 | 11.93 | 1.01 | 4.98 | 0.0011 | 17.20 | 2.18 |
| 8.5 | 38.3 | 12.13 | 1.03 | 5.02 | 0.0011 | 17.45 | 2.18 |
| 9 | 35.5 | 12.41 | 1.05 | 4.98 | 0.0011 | 17.74 | 2.17 |
| 9.5 | 32.2 | 12.73 | 1.07 | 4.89 | 0.0011 | 18.05 | 2.17 |
| 10 | 28.5 | 13.12 | 1.10 | 4.75 | 0.0011 | 18.41 | 2.16 |
| 10.5 | 25.0 | 13.53 | 1.12 | 4.56 | 0.0011 | 18.74 | 2.16 |
| 11 | 19.6 | 14.30 | 1.18 | 4.07 | 0.0011 | 19.32 | 2.14 |
| 11.5 | 18.4 | 14.50 | 1.19 | 3.99 | 0.0011 | 19.49 | 2.12 |
| 12 | 17.2 | 14.71 | 1.20 | 3.83 | 0.0011 | 19.62 | 2.11 |
| 12.5 | 16.5 | 14.81 | 1.21 | 3.76 | 0.0011 | 19.69 | 2.11 |
| 13 | 16.0 | 14.87 | 1.21 | 3.70 | 0.0011 | 19.73 | 2.11 |
| 13.5 | 13.0 | 15.25 | 1.23 | 3.36 | 0.0011 | 19.94 | 2.08 |
| 14 | 11.7 | 15.42 | 1.24 | 3.22 | 0.0011 | 20.04 | 2.07 |

| In Situ License 5 Upper Mineralisation Inferred | | | | | | | |
|--|--------|---------|---------|--------|---------|---------|---------|
| Cut Off | Tonnes | Zn_perc | Pb_perc | Ag_ppm | Cu_perc | Fe_perc | DENSITY |
| Zn % | 000 | % | % | % | % | % | g/cc |
| 0.5 | 474.8 | 2.45 | 1.38 | 1.83 | 0.0067 | 9.76 | 2.42 |
| 1 | 336.9 | 3.18 | 1.59 | 1.40 | 0.0092 | 12.57 | 2.41 |
| 1.5 | 284.3 | 3.55 | 1.74 | 1.26 | 0.0106 | 13.89 | 2.42 |
| 2 | 263.4 | 3.68 | 1.77 | 1.23 | 0.0111 | 14.14 | 2.42 |
| 2.5 | 218.3 | 3.98 | 1.79 | 1.14 | 0.0123 | 14.44 | 2.43 |
| 3 | 167.8 | 4.34 | 1.79 | 1.08 | 0.0138 | 14.59 | 2.43 |
| 3.5 | 122.4 | 4.78 | 1.64 | 1.01 | 0.0157 | 13.95 | 2.43 |
| 4 | 48.7 | 6.47 | 0.08 | 0.76 | 0.0249 | 5.45 | 2.48 |
| 4.5 | 40.3 | 6.92 | 0.09 | 0.76 | 0.0268 | 5.61 | 2.47 |
| 5 | 31.1 | 7.56 | 0.11 | 0.77 | 0.0295 | 5.75 | 2.46 |
| 5.5 | 25.9 | 8.03 | 0.12 | 0.77 | 0.0316 | 5.77 | 2.46 |
| 6 | 20.9 | 8.59 | 0.03 | 0.78 | 0.0343 | 5.08 | 2.46 |
| 6.5 | 18.3 | 8.91 | 0.03 | 0.80 | 0.0359 | 4.88 | 2.47 |
| 7 | 15.7 | 9.29 | 0.03 | 0.81 | 0.0377 | 4.69 | 2.47 |
| 7.5 | 12.7 | 9.76 | 0.03 | 0.82 | 0.0399 | 4.51 | 2.47 |
| 8 | 10.6 | 10.16 | 0.03 | 0.84 | 0.0418 | 4.30 | 2.48 |

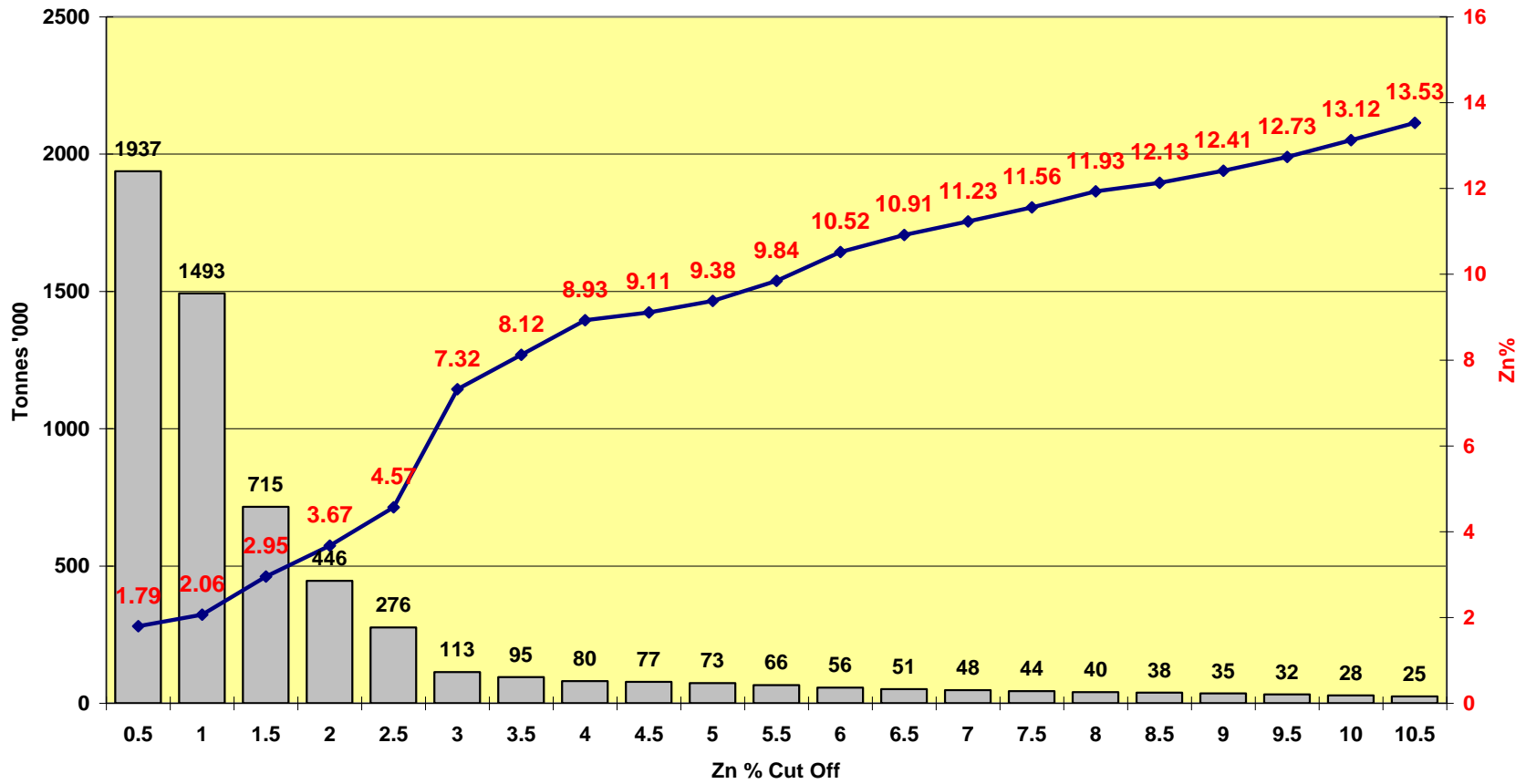
TABLE 3 – LICENCE 5 UPPER INFERRED MINERALISATION

| In situ Combined License 5 Mineralisation Inferred | | | | | | | |
|---|--------|---------|---------|--------|---------|---------|---------|
| Cut Off | Tonnes | Zn_perc | Pb_perc | Ag_ppm | Cu_perc | Fe_perc | DENSITY |
| Zn % | 000 | % | % | % | % | % | g/cc |
| 0.5 | 2412.1 | 1.92 | 0.54 | 1.67 | 0.002 | 20.32 | 2.02 |
| 1 | 1829.6 | 2.27 | 0.62 | 1.75 | 0.003 | 22.59 | 1.99 |
| 1.5 | 999.1 | 3.12 | 0.87 | 2.03 | 0.004 | 23.64 | 2.02 |
| 2 | 709.1 | 3.67 | 1.02 | 2.23 | 0.005 | 21.46 | 2.11 |
| 2.5 | 494.4 | 4.31 | 1.15 | 2.36 | 0.006 | 18.99 | 2.23 |
| 3 | 281.3 | 5.54 | 1.38 | 2.61 | 0.009 | 15.58 | 2.30 |
| 3.5 | 217.3 | 6.24 | 1.28 | 2.62 | 0.009 | 15.00 | 2.30 |
| 4 | 129.1 | 8.00 | 0.54 | 3.21 | 0.010 | 11.82 | 2.28 |
| 4.5 | 117.8 | 8.36 | 0.57 | 3.31 | 0.010 | 12.07 | 2.27 |
| 5 | 104.0 | 8.84 | 0.62 | 3.38 | 0.010 | 12.73 | 2.25 |
| 5.5 | 91.4 | 9.33 | 0.66 | 3.43 | 0.010 | 13.36 | 2.24 |
| 6 | 77.1 | 9.99 | 0.68 | 3.30 | 0.010 | 13.92 | 2.24 |
| 6.5 | 69.8 | 10.39 | 0.71 | 3.51 | 0.010 | 13.86 | 2.24 |
| 7 | 63.5 | 10.75 | 0.73 | 3.69 | 0.010 | 13.82 | 2.25 |
| 7.5 | 57.0 | 11.15 | 0.77 | 3.89 | 0.010 | 14.14 | 2.25 |
| 8 | 51.0 | 11.56 | 0.81 | 4.12 | 0.010 | 14.52 | 2.24 |
| 8.5 | 46.3 | 11.89 | 0.85 | 4.30 | 0.009 | 15.12 | 2.23 |
| 9 | 41.4 | 12.27 | 0.90 | 4.39 | 0.008 | 15.71 | 2.22 |
| 9.5 | 37.1 | 12.62 | 0.93 | 4.36 | 0.008 | 16.13 | 2.21 |
| 10 | 33.0 | 12.98 | 0.95 | 4.22 | 0.008 | 16.37 | 2.21 |
| 10.5 | 29.0 | 13.35 | 0.97 | 4.05 | 0.008 | 16.62 | 2.20 |
| 11 | 23.1 | 14.04 | 1.00 | 3.59 | 0.009 | 16.93 | 2.19 |
| 11.5 | 21.4 | 14.26 | 1.02 | 3.56 | 0.008 | 17.24 | 2.17 |
| 12 | 19.7 | 14.49 | 1.05 | 3.46 | 0.008 | 17.57 | 2.16 |
| 12.5 | 18.3 | 14.66 | 1.09 | 3.48 | 0.006 | 18.09 | 2.15 |
| 13 | 17.1 | 14.79 | 1.13 | 3.52 | 0.005 | 18.65 | 2.13 |
| 13.5 | 13.6 | 15.18 | 1.18 | 3.25 | 0.004 | 19.19 | 2.10 |
| 14 | 11.7 | 15.42 | 1.24 | 3.22 | 0.001 | 20.04 | 2.07 |

TABLE 4 – LICENCE 5 COMBINED INFERRED MINERALISATION

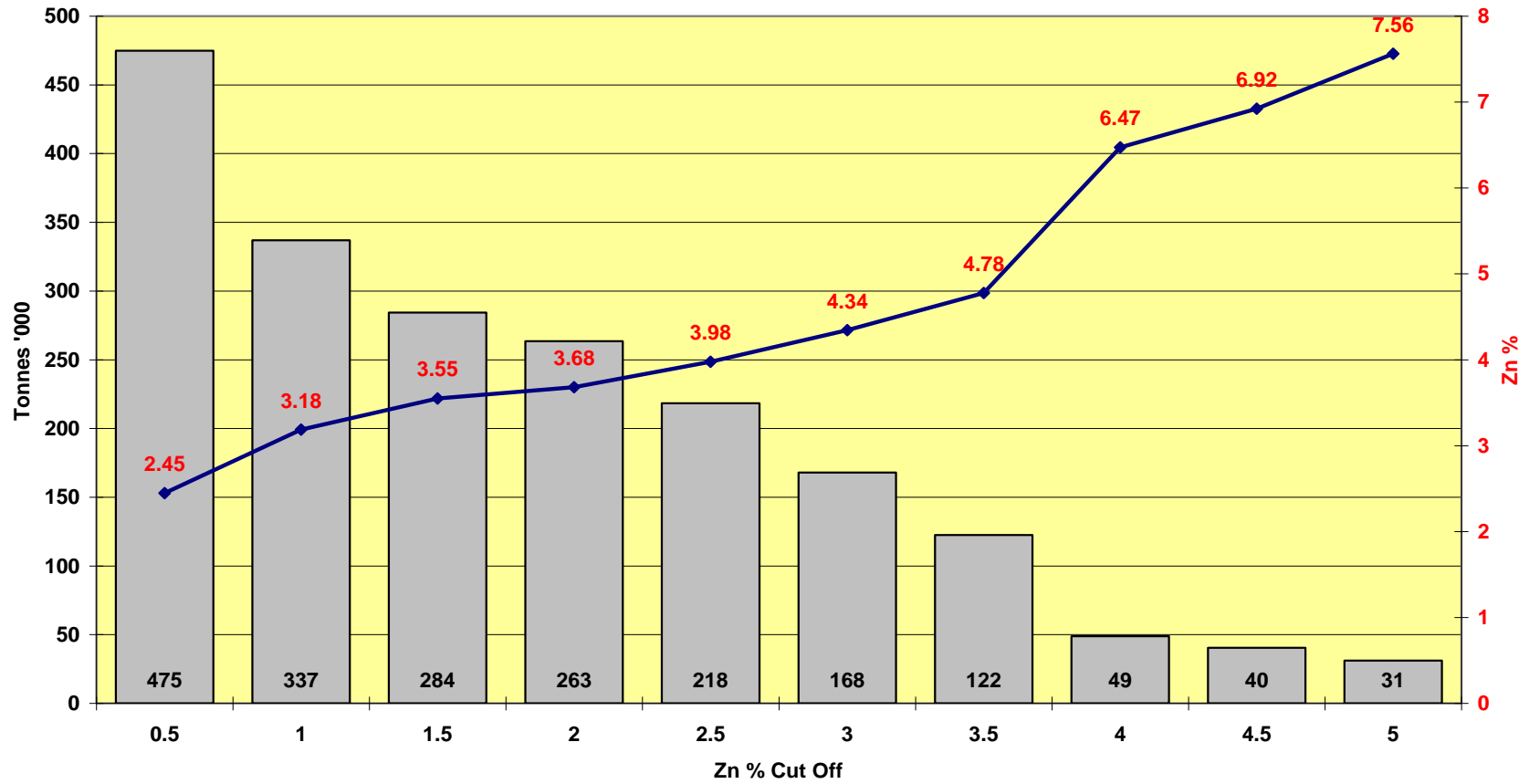
**GRAPH 2 – LICENCE 5 LOWER GRADE-TONNAGE
CURVE**

License 5 Main (Lower) Mineralisation



**GRAPH 3 – LICENCE 5 UPPER GRADE-TONNAGE
CURVE**

License 5 Upper Mineralisation



**GRAPH 4 – LICENCE 5 COMBINED GRADE-
TONNAGE CURVE**

License 5 Combined Main and Upper Mineralisation

