
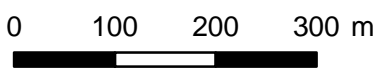
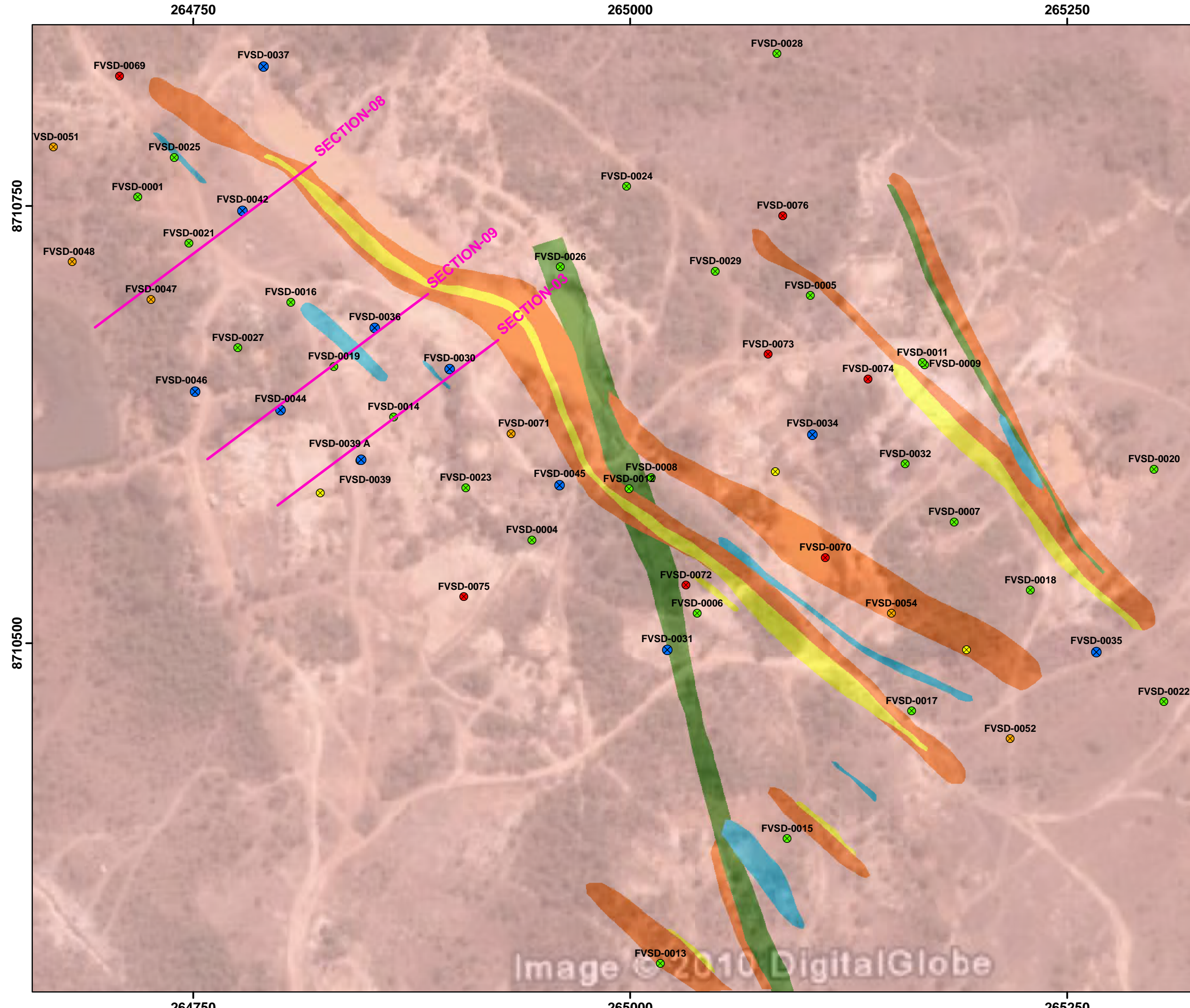


<p>Legend</p> <p>Drilling Type/Status</p> <ul style="list-style-type: none"> ⊗ New Results ⊗ Results Published ⊗ Programmed ⊗ Executed Results Pending ⊗ Executed In Site 	 <p>Rio Novo GOLD INC</p> <p>1:7,500</p> 	<p>ALMAS PROJECT ALMAS TOCANTINS STATE</p> <p>DRILLING AND GOOGLE EARTH MAP VIRA SAIA TARGET</p> <p>SAD69 - UTM 23S SOURCE: RIO NOVO GOLD, ANEEL, IBGE, ANA, CPRM DATE: 2011/10/03</p>
---	--	---



Legend

Drilling
Type/Status

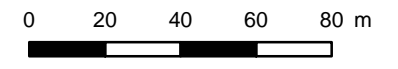
- x New Results
- x Results Published
- x Executed Results Pending
- x Executed In Site
- x Programmed

Geology- Rio Novo
Lithology

- █ Pegmatite
- █ Metavolcanic Rock
- █ Quartz Sericite Schist - QSX
- █ Granodiorite Mylonitized
- █ Granodiorite



1:2,000

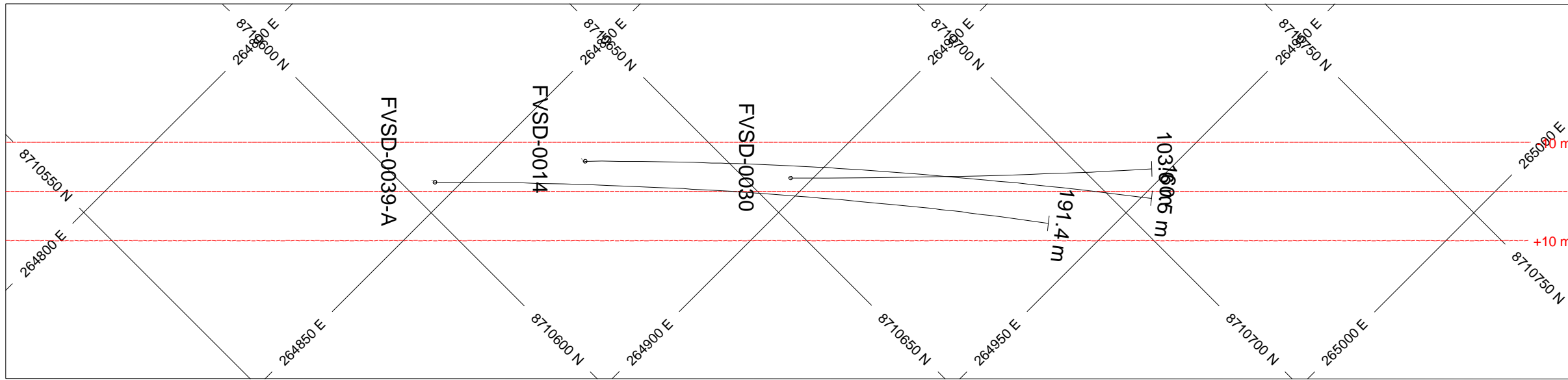


ALMAS PROJECT
ALMAS
TOCANTINS STATE

DRILLING AND
GEOLOGICAL MAP
VIRA SAIA TARGET

SAD69 - UTM 23S
SOURCE: RIO NOVO GOLD, ANEEL,
IBGE, ANA, CPRM
DATE: 2011/10/03

Image © 2010 DigitalGlobe



HOLES PLOTTED

TOTAL 3

FVSD-0014 FVSD-0030 FVSD-0039-A

SECTION-03
VIRA SAIA TARGET
ALMAS PROJECT

TOPOGRAPHY

— Topography

NUMBER BANDS	L/R	COL	RANGE
AU_PPM	R	[Color]	3
		[Color]	1
		[Color]	0.5
		[Color]	0.3
		[Color]	0.05
		[Color]	0.005
		[Color]	0

ROCK CODES	PAT	LABEL	DESCRIPTION
Rock_Code	[Color]	SO	Soil
	[Color]	SP	Saprolite
	[Color]	RI	Weathered Rock
	[Color]	VQTZ	Quartz Vein
	[Color]	QSX	Quartz-Sericite Schist
	[Color]	MV	Meta-Volcanic
	[Color]	RSI	Semi Weathered Rock
	[Color]	GDM	Milonite Granodiorite
	[Color]	RM	Mafic Rock
	[Color]	GDT	Granodiorite
	[Color]	PGT	Pegmatite Quartz Feldspar

POSTED TEXT	L/R	TEXT	ITEMS
Rock_Code	L	-----	All

SECTION SPECS:

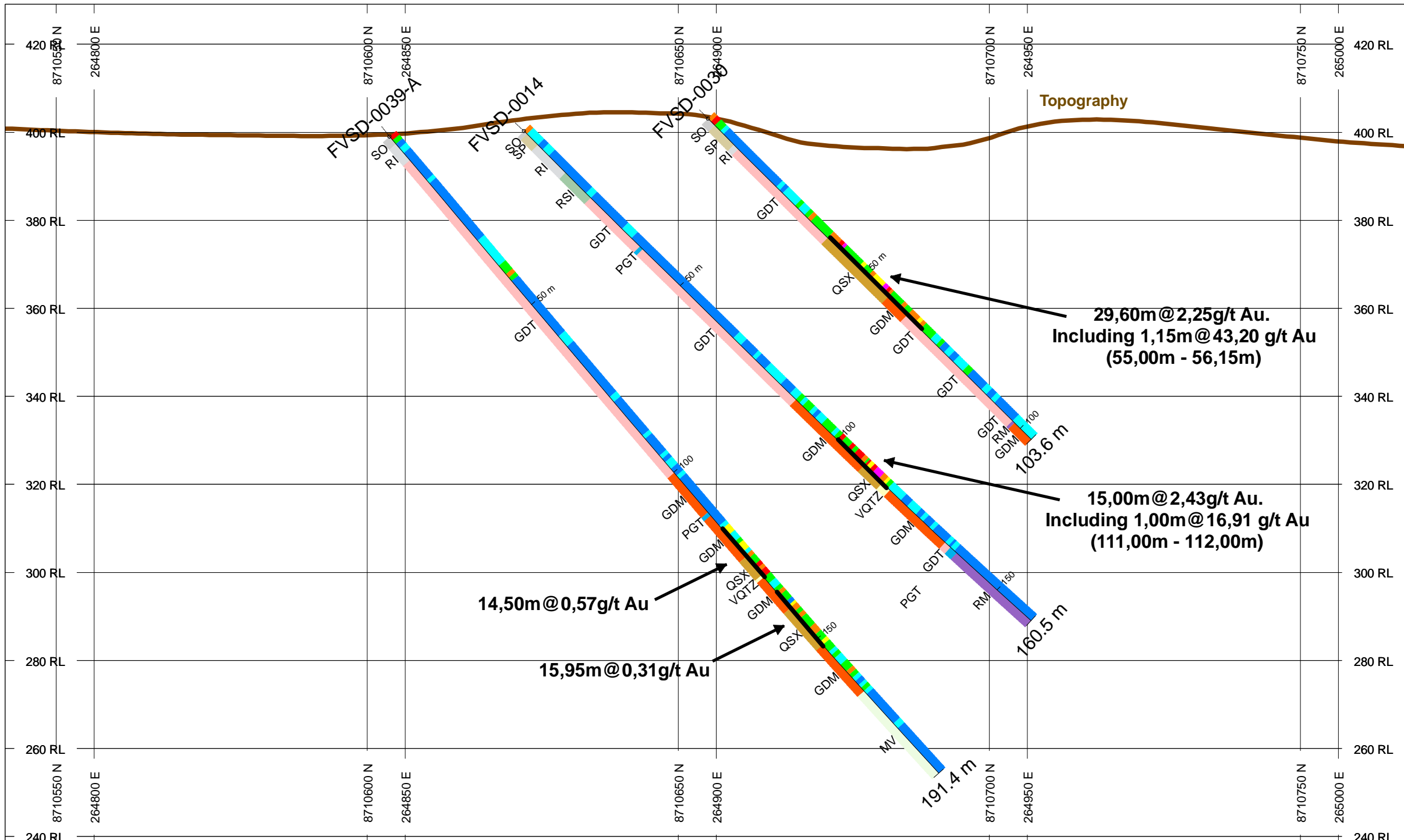
REF. PT. E, N	264899 m	8710655 m
EXTENTS	320.1 m	190.7 m
SECTION TOP, BOT	429.1 m	238.3 m
TOLERANCE +/-	10 m	

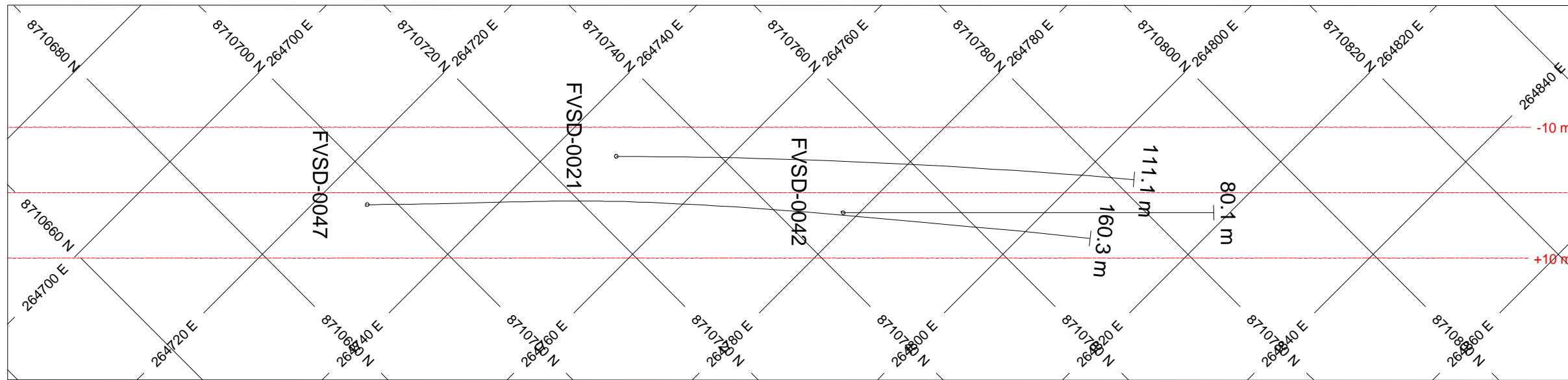
SCALE

(m)

SAD69 / UTM zone 23S

AZIMUTH = 45°



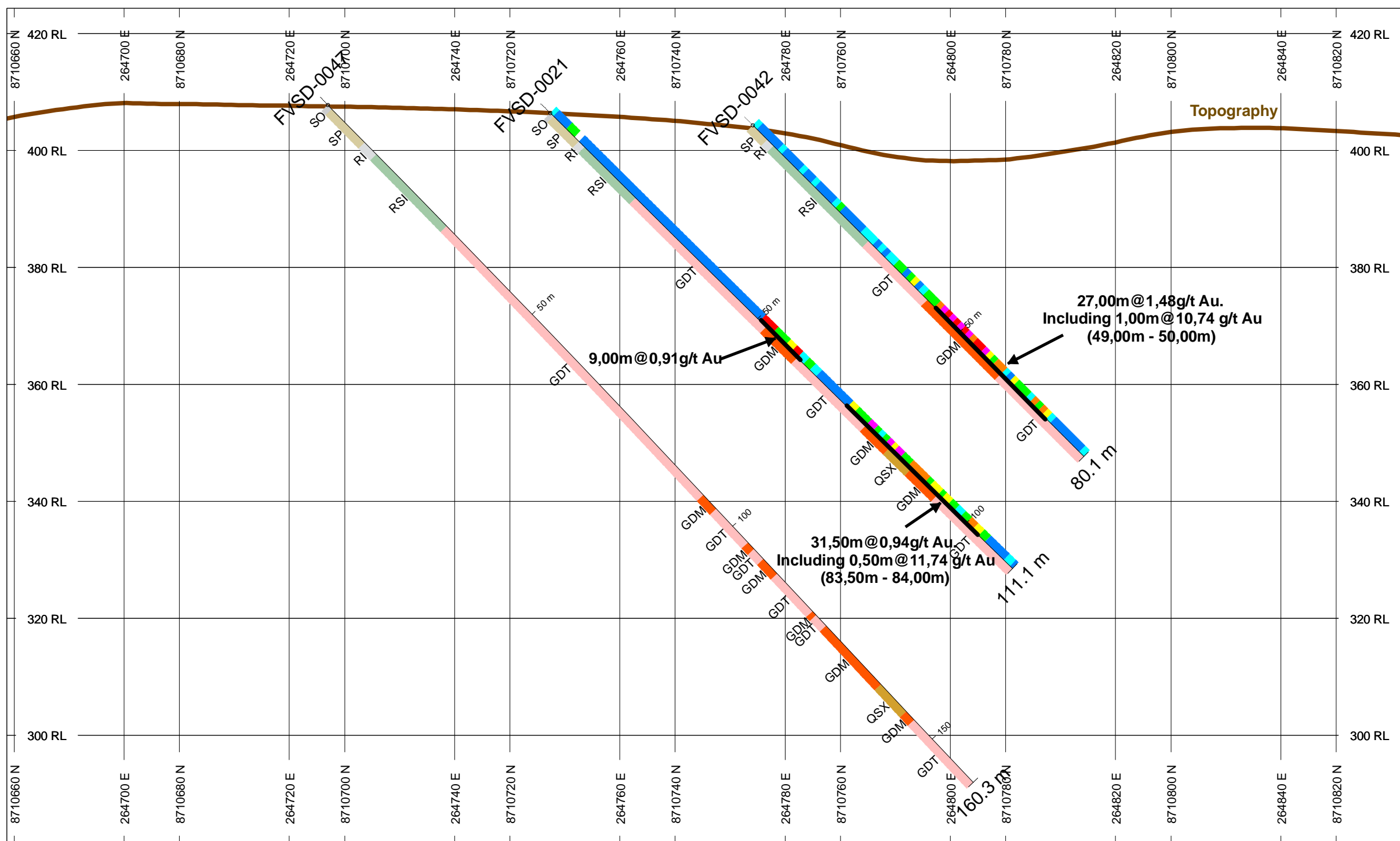


HOLES PLOTTED

TOTAL 3

FVSD-0021 FVSD-0042 FVSD-0047

**SECTION-08
VIRA SAIA TARGET
ALMAS PROJECT**



TOPOGRAPHY

Topography

NUMBER BANDS	L/R	COL	RANGE
AU_PPM	R		
			3
			1
			0.5
			0.3
			0.05
			0.005
			0

ROCK CODES	PAT	LABEL	DESCRIPTION
Rock_Code		SO	Soil
		SP	Saprolite
		RI	Weathered Rock
		QSX	Quartz-Sericite Schist
		RSI	Semi Weathered Rock
		GDM	Milonite Granodiorite
		GDT	Granodiorite

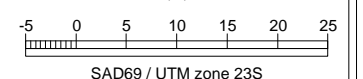
POSTED TEXT	L/R	TEXT	ITEMS
Rock_Code	L	-----	All

SECTION SPECS:

REF. PT. E, N	264771 m	8710744 m
EXTENTS	240.1 m	143 m
SECTION TOP, BOT	424.3 m	281.3 m
TOLERANCE +/-		10 m

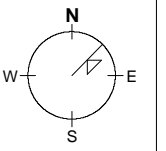
SCALE

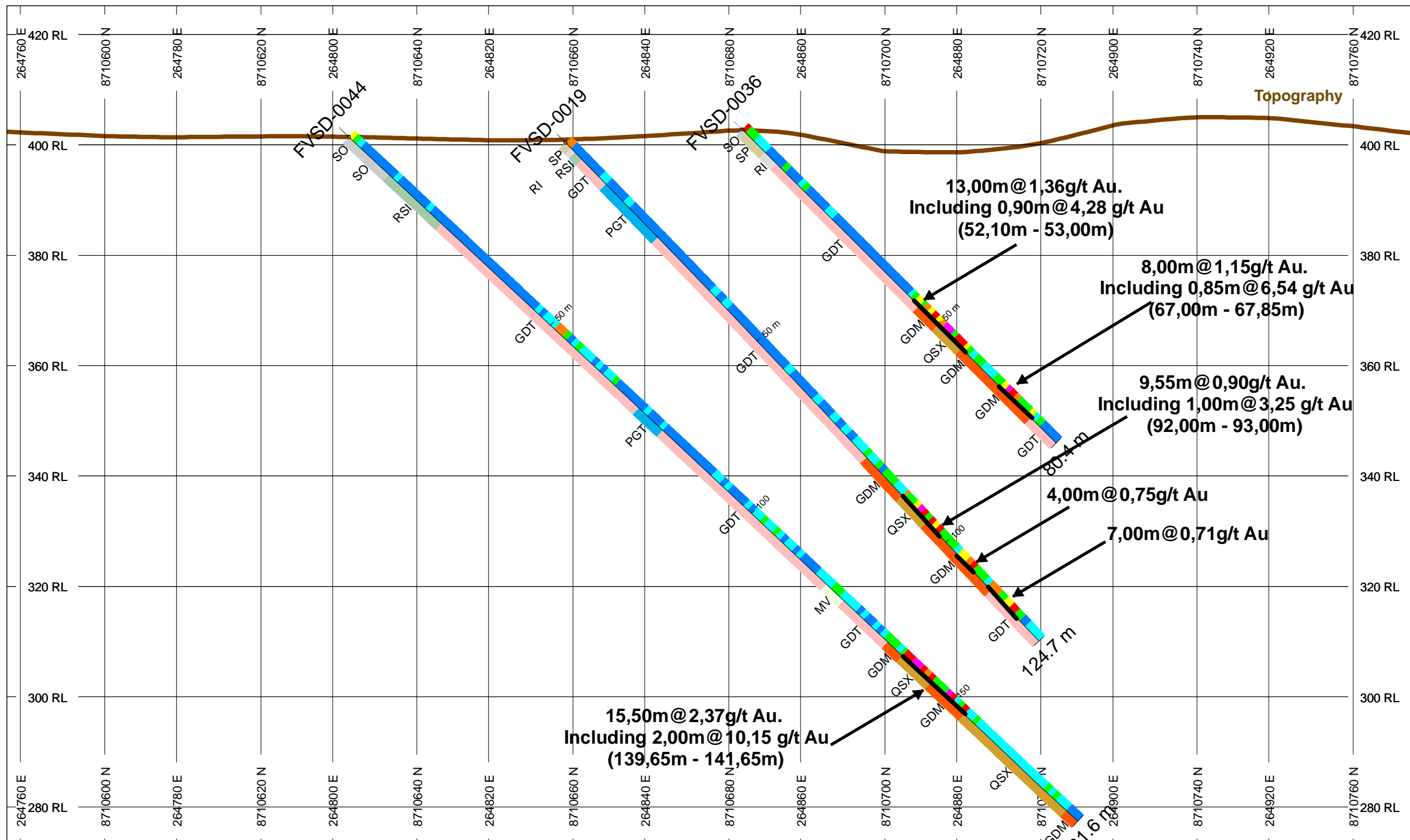
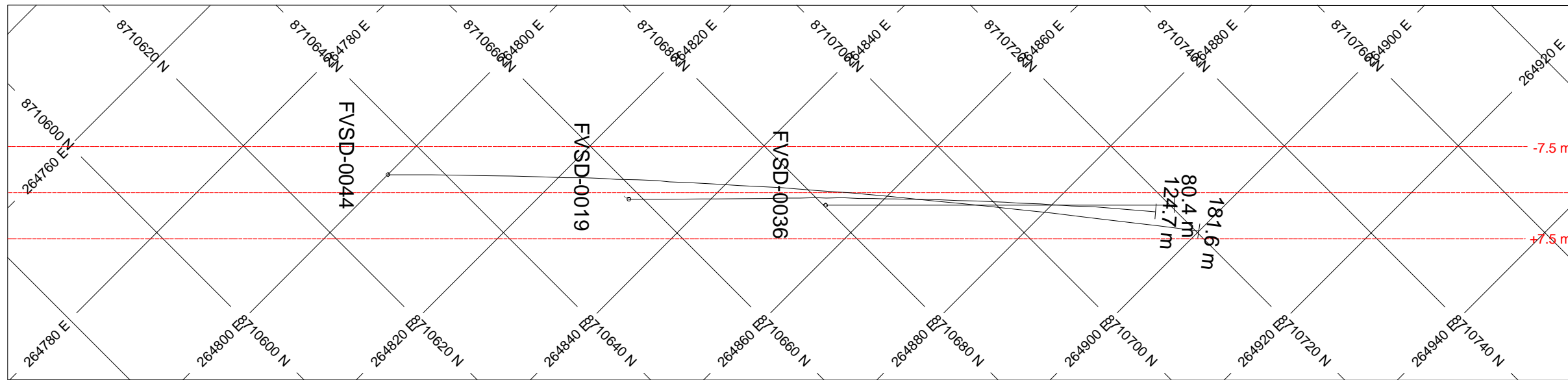
(m)



SAD69 / UTM zone 23S

AZIMUTH = 45°





HOLES PLOTTED
TOTAL 3
FVSD-0019 FVSD-0036 FVSD-0044

SECTION-09
VIRA SAIA TARGET
ALMAS PROJECT

TOPOGRAPHY
Topography

NUMBER BANDS	L/R	COL	RANGE
AU_PPM	R		
			3
			1
			0.5
			0.3
			0.05
			0.005
			0

ROCK CODES	PAT	LABEL	DESCRIPTION
Rock_Code			
	SO	SO	Soil
	SP	SP	Saprolite
	RI	RI	Weathered Rock
	QSX	QSX	Quartz-Sericite Schist
	MV	MV	Meta-Volcanic
	RSI	RSI	Semi Weathered Rock
	GDM	GDM	Milonite Granodiorite
	GDT	GDT	Granodiorite
	PGT	PGT	Pegmatite Quartz Feldspar

POSTED TEXT	L/R	TEXT	ITEMS
Rock_Code	L	-----	All

SECTION SPECS:

REF. PT. E, N	264849 m	8710678 m
EXTENTS	256.1 m	152.6 m
SECTION TOP, BOT	425.3 m	272.7 m
TOLERANCE +/-	7.5 m	

SCALE
(m)
-5 0 5 10 15 20 25
SAD69 / UTM zone 23S

AZIMUTH = 45°
N
W E
S