

264500

265000

265500

266000

8707000

8707000

8706500

8706500

8706000

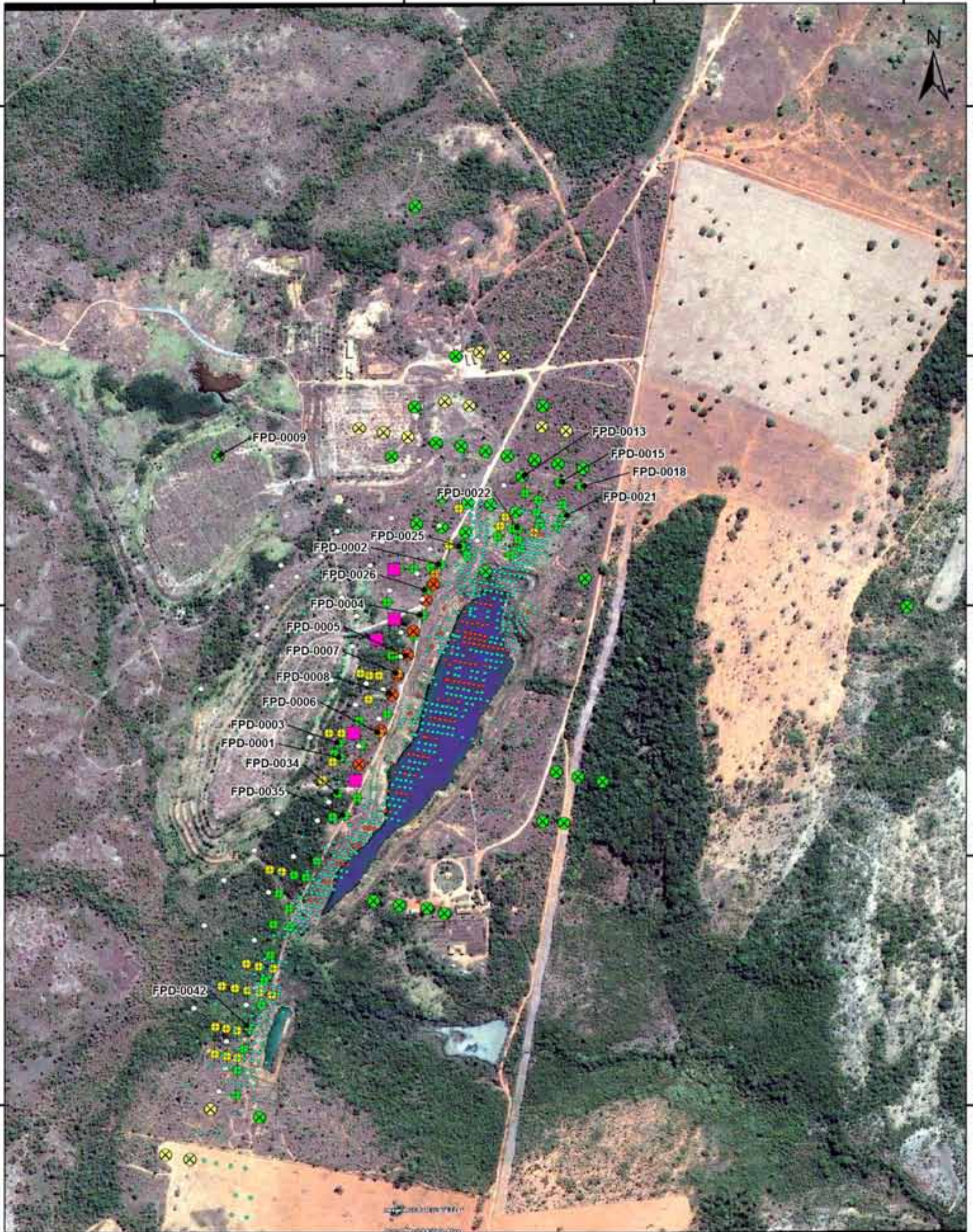
8706000

8705500

8705500

8705000

8705000



264500

265000

265500

266000

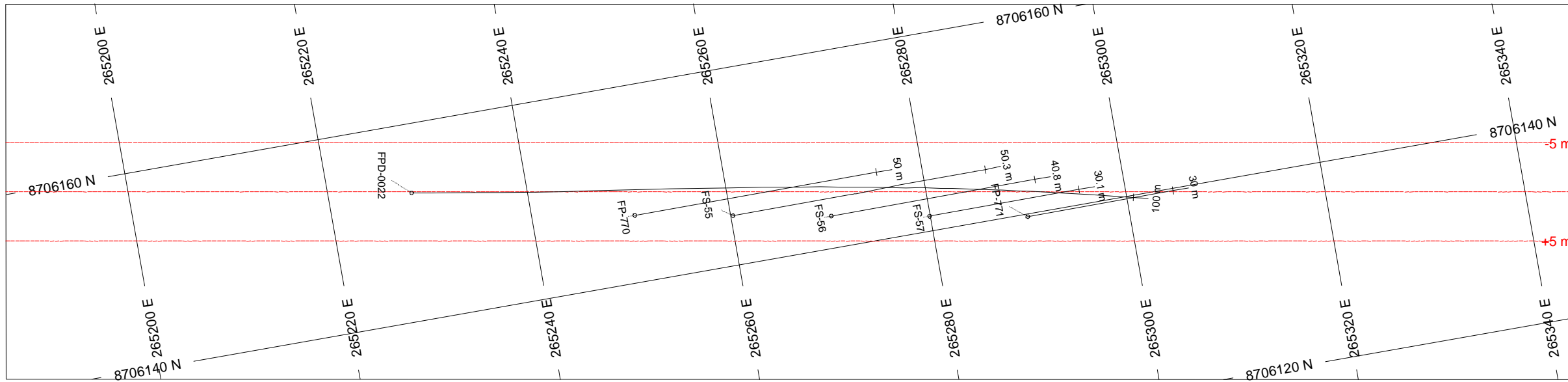
- | | |
|-------------------------|-----------------------|
| Drilling | Drilling |
| Type/Status | • METAGO |
| ● Extension/Executed | ○ MSE |
| ● Extension/In Progress | ● VALE |
| ● Extension/Programmed | ■ Drill Rigs Location |
| ● In Fill/Executed | |
| ● In Fill/In Progress | |
| ● In Fill/Programmed | |
| ● Metal | |



1:7.500
0 75 150 225 m

**ALMAS PROJECT
ALMAS
TOCANTINS STATE**

DRILLING AND
GOOGLE EARTH MAP
PAIOL TARGET
SAD69 - UTM 23S
SOURCE: RIO NOVO GOLD, ANEEL,
IBGE, ANA, CPRM
DATE: 2010/09/16

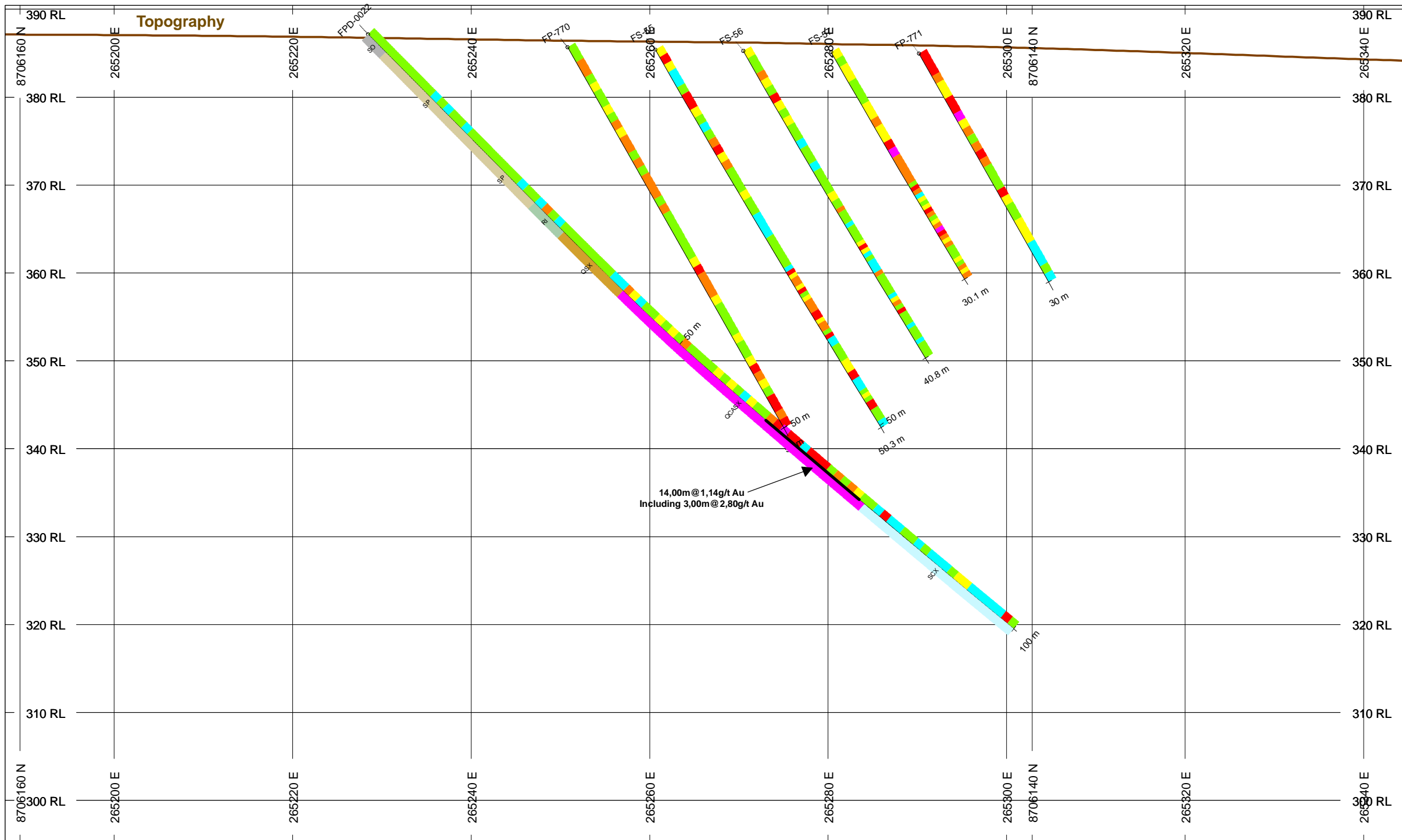


HOLES PLOTTED

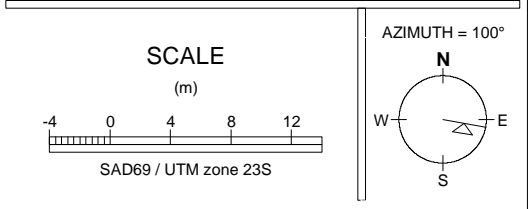
TOTAL 6

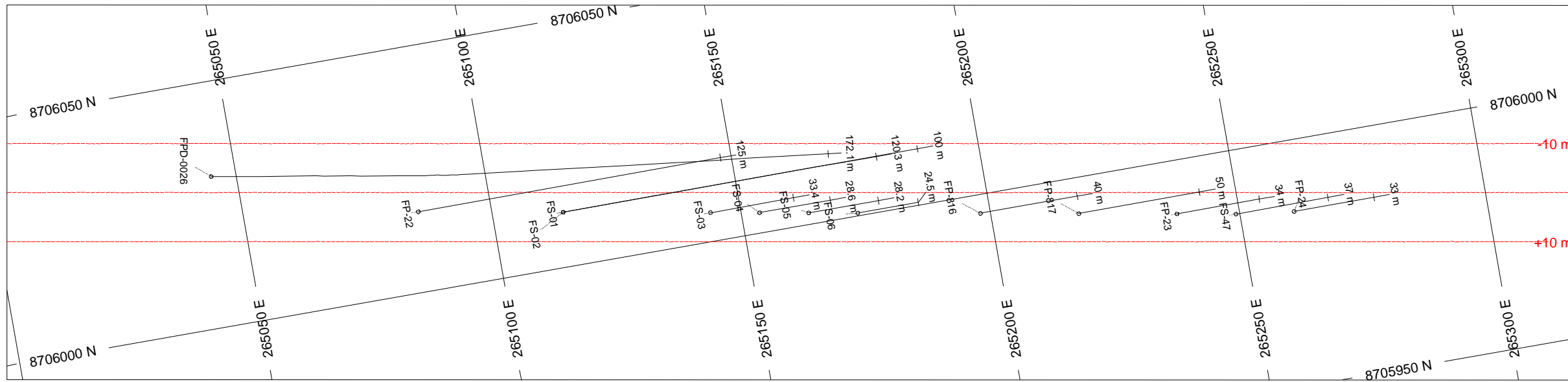
FP-770 FP-771 FPD-0022 FS-55
 FS-56 FS-57

**SECTION FPD-0022
 PAIOL TARGET
 ALMAS PROJECT**



BAR GRAPHS	L/R	COL
AU_PPM	R	
NUMBER BANDS	L/R	COL RANGE
AU_PPM	R	
ROCK CODES	PAT	LABEL DESCRIPTION
Rock_Code		SO Soil
		SP Saprolite
		RI Weathered Rock
		QSX Quartz-Sericite Schist
		QCASX Quartz-Carbonate-Sericite Schist
		SCX Sericite-Chlorite Schist
POSTED TEXT	L/R	TEXT ITEMS
AU_PPM_Labels	R	----- All
Rock_Code	L	----- All
SECTION SPECS:		
REF. PT. E, N	265267 m	8706146 m
EXTENTS	160.1 m	95.36 m
SECTION TOP, BOT	390.4 m	295.1 m
TOLERANCE +/-	5 m	



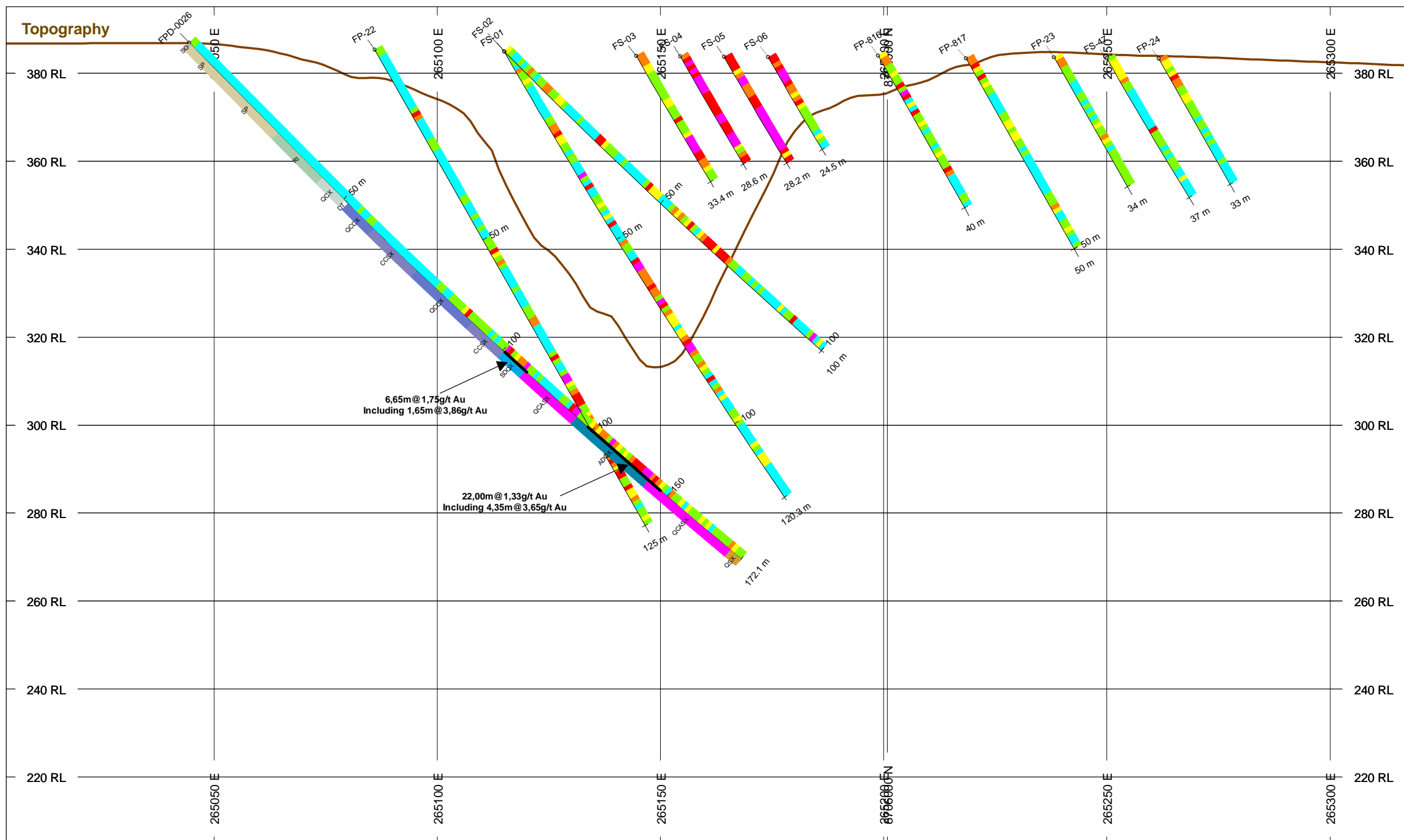


HOLES PLOTTED

TOTAL 13

FP-22	FP-23	FP-24	FP-816
FP-817	FPD-0026	FS-01	FS-02
FS-03	FS-04	FS-05	FS-06
FS-47			

**SECTION FPD-0026
PAIOL TARGET
ALMAS PROJECT**



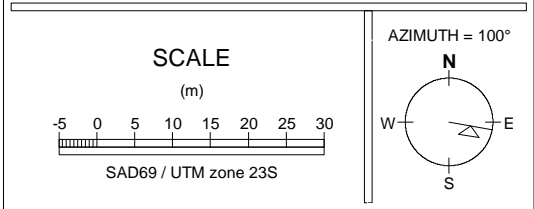
BAR GRAPHS	L/R	COL	
AU_PPM	R		
NUMBER BANDS	L/R	COL	RANGE
AU_PPM	R		

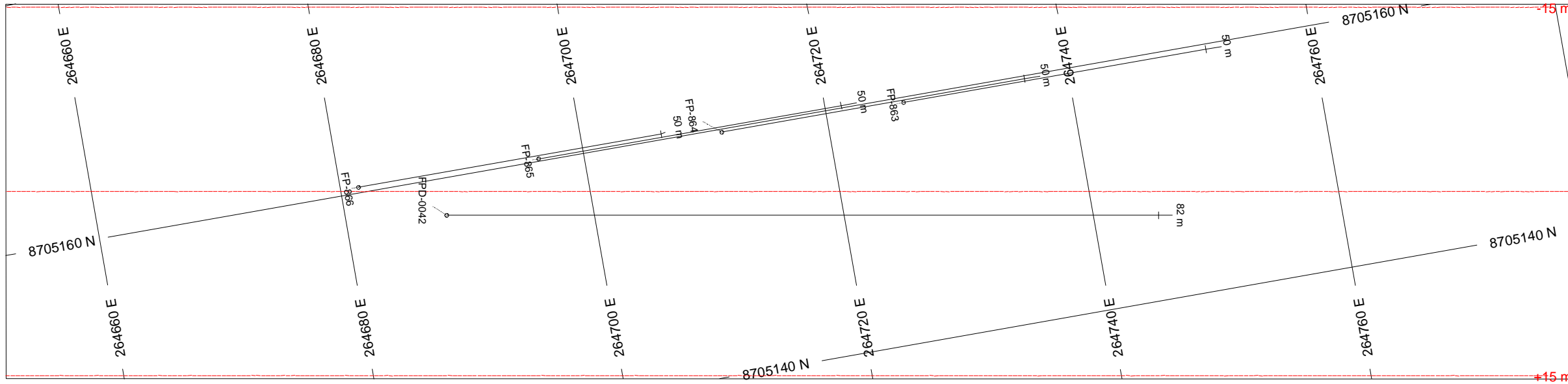
ROCK CODES	PAT	LABEL	DESCRIPTION
Rock_Code			
	SO	Soil	
	SP	Saprolite	
	RI	Weathered Rock	
	SDQX	Sericite-Ankerite-Quartz Schists	
	ADQX	Albite-Ankerite-Quartz Schists	
	QCCX	Quartz-carbonate-chlorite Schists	
	QSX	Quartz-Sericite Schist	
	CCSX	Carbonate-Chlorite-Sericite Schist	
	QCASX	Quartz-Carbonate-Sericite Schist	
	QCX	Quartz-Chlorite Schist	

POSTED TEXT	L/R	TEXT	ITEMS
AU_PPM_Labels	R	-----	All
Rock_Code	L	-----	All

SECTION SPECS:

REF. PT. E, N	265161 m	8706007 m
EXTENTS	320.2 m	190.8 m
SECTION TOP, BOT	395.2 m	204.4 m
TOLERANCE +/-		10 m



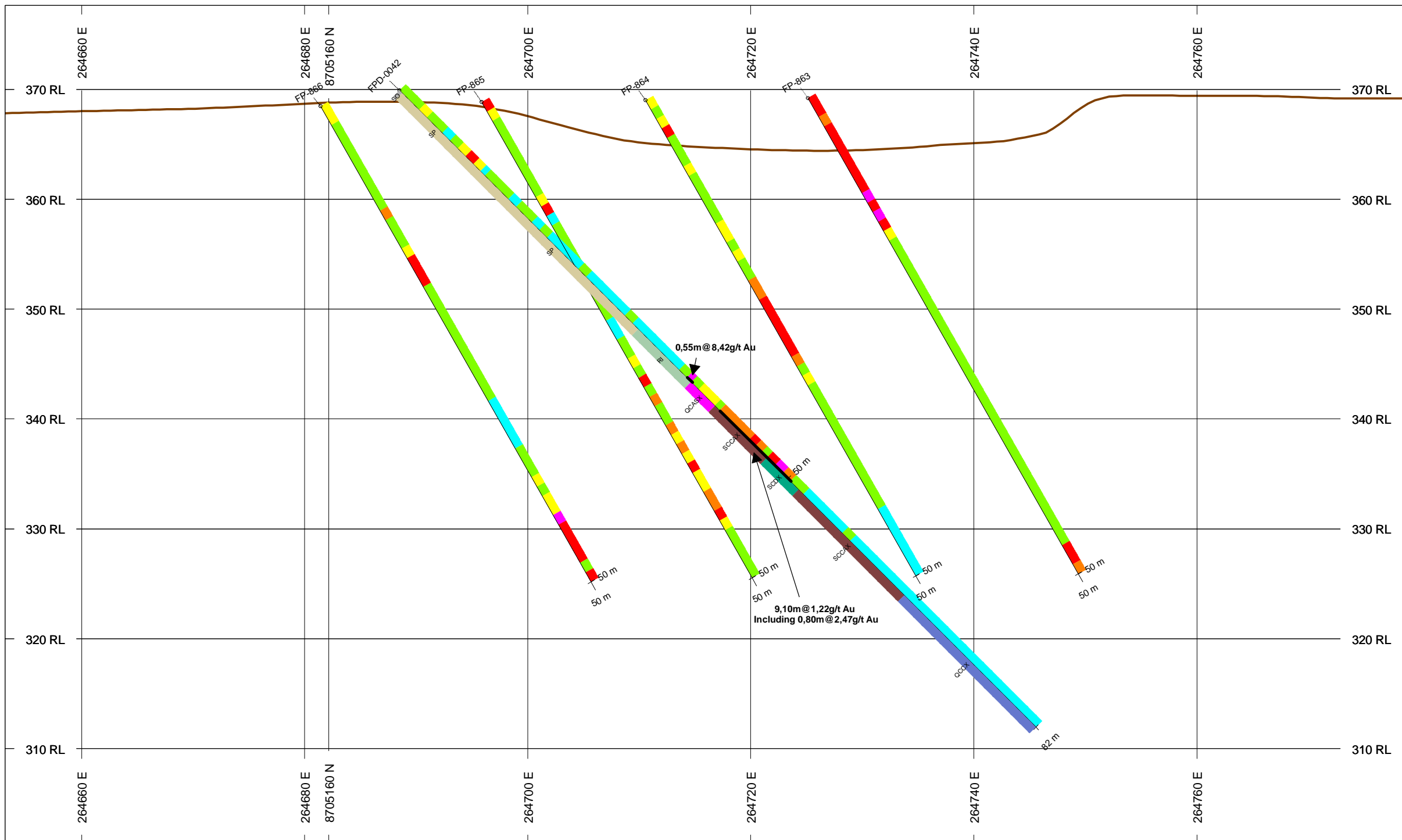


HOLES PLOTTED

TOTAL 5

FP-863 FP-864 FP-865 FP-866
 FPD-0042

**SECTION FPD-0042
 PAIOL TARGET
 ALMAS PROJECT**



BAR GRAPHS	L/R	COL
AU_PPM	R	[Red]

NUMBER BANDS	L/R	COL	RANGE
AU_PPM	R	[Magenta]	3
		[Red]	1
		[Orange]	0.5
		[Yellow]	0.3
		[Light Green]	0.05
		[Cyan]	0
		[Grey]	

ROCK CODES	PAT	LABEL	DESCRIPTION
Rock_Code	[Grey]	SO	Soil
	[Light Brown]	SP	Saprolite
	[Light Green]	RI	Weathered Rock
	[Dark Green]	SCDX	Sericite-chlorite-Ankerite Schists
	[Blue]	QCCX	Quartz-carbonate-chlorite Schists
	[Brown]	SCCAX	Sericite-Chlorite-Carbonate Schist
	[Magenta]	QCASX	Quartz-Carbonate-Sericite Schist

POSTED TEXT	L/R	TEXT	ITEMS
AU_PPM_Labels	R	-----	All
Rock_Code	L	-----	All

SECTION SPECS:

REF. PT. E, N	264716 m	8705154 m
EXTENTS	128 m	76.29 m
SECTION TOP, BOT	377.6 m	301.3 m
TOLERANCE +/-	15 m	

