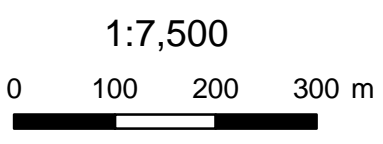


Legend

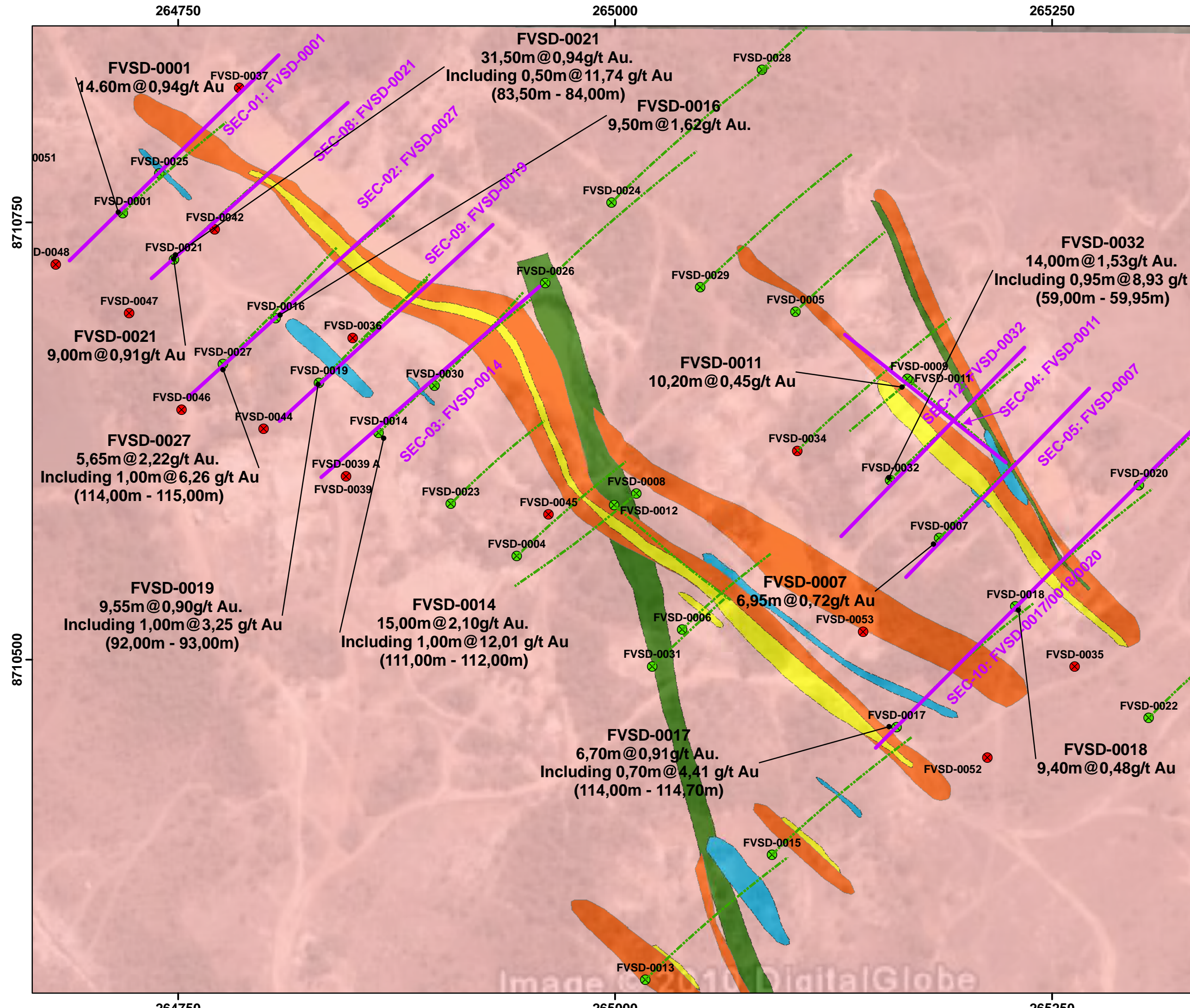
- Drilling
Type/Status
- ⊗ Executed With Results
 - ⊗ Executed Results Pending
 - ⊗ Programmed
 - Hole Projection



ALMAS PROJECT
ALMAS
TOCANTINS STATE

DRILLING AND
GOOGLE EARTH MAP
VIRA SAIA TARGET

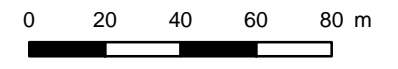
SAD69 - UTM 23S
SOURCE: RIO NOVO GOLD, ANEEL,
IBGE, ANA, CPRM
DATE: 2011/09/02



- ### Legend
- Drilling
Type/Status
- Executed With Results
 - Executed Results Pending
 - Programmed
 - Hole Projection
- Geology- Rio Novo
Lithology
- Metavulcanic Rock
 - Pegmatite
 - Quartz Sericite Schist - QSX
 - Granodiorite Mylonitized
 - Granodiorite



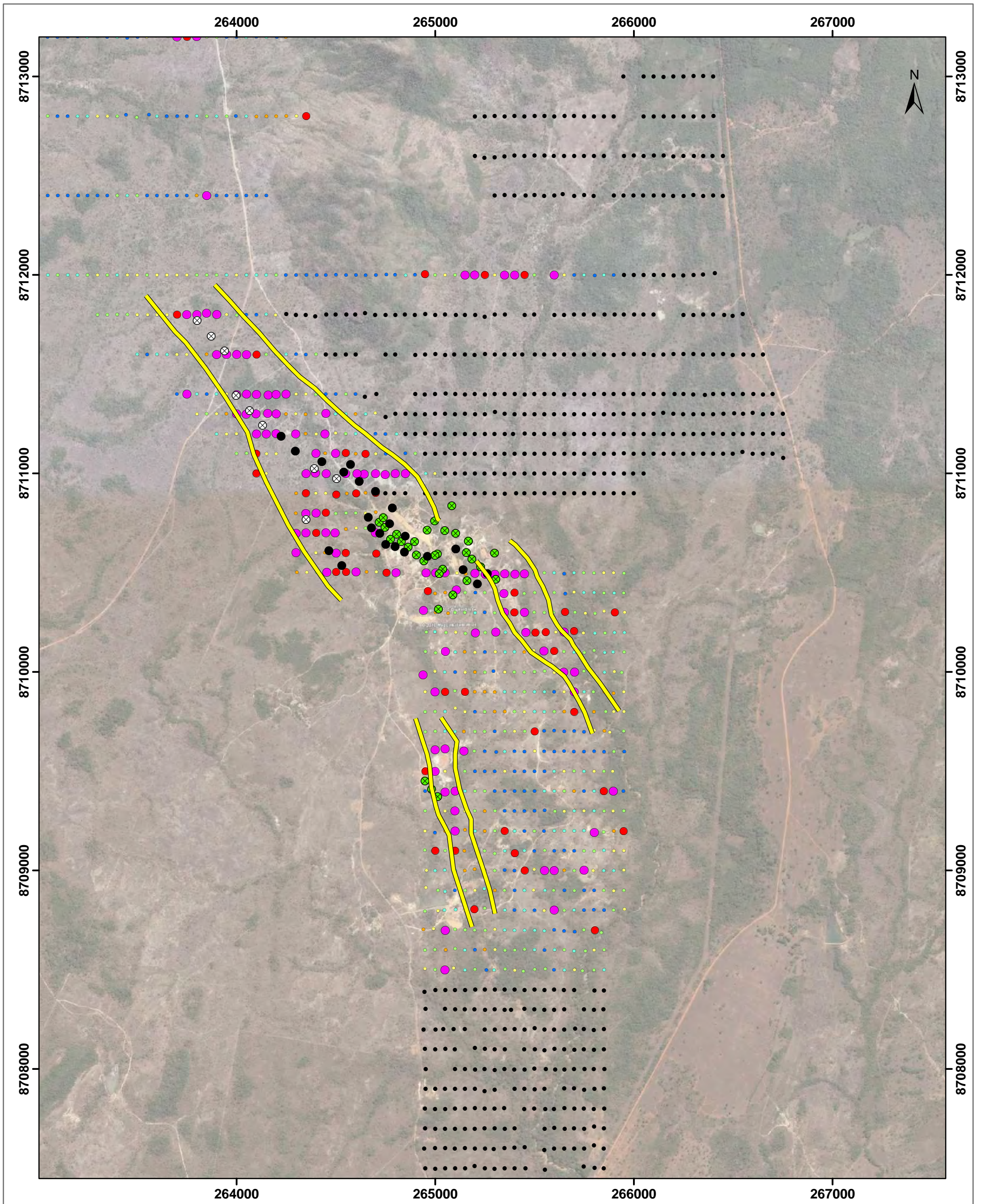
1:2,000



ALMAS PROJECT
ALMAS
TOCANTINS STATE

DRILLING AND
 GEOLOGICAL MAP
 VIRA SAIA TARGET

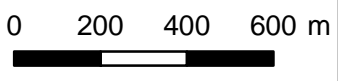
SAD69 - UTM 23S
 SOURCE: RIO NOVO GOLD, ANEEL,
 IBGE, ANA, CPRM
 DATE: 2011/09/02



Drilling	Soil Results	● 25 - 50
Type/Status	Au ppb	● 50 - 75
● Executed With Results	● < 5	● 75 - 100
● Executed Results Pending	● 5 - 10	● 100 - 2701
⊗ Programmed	● 10 - 25	● Soil Results Pending
		— Soil Trend Anomaly



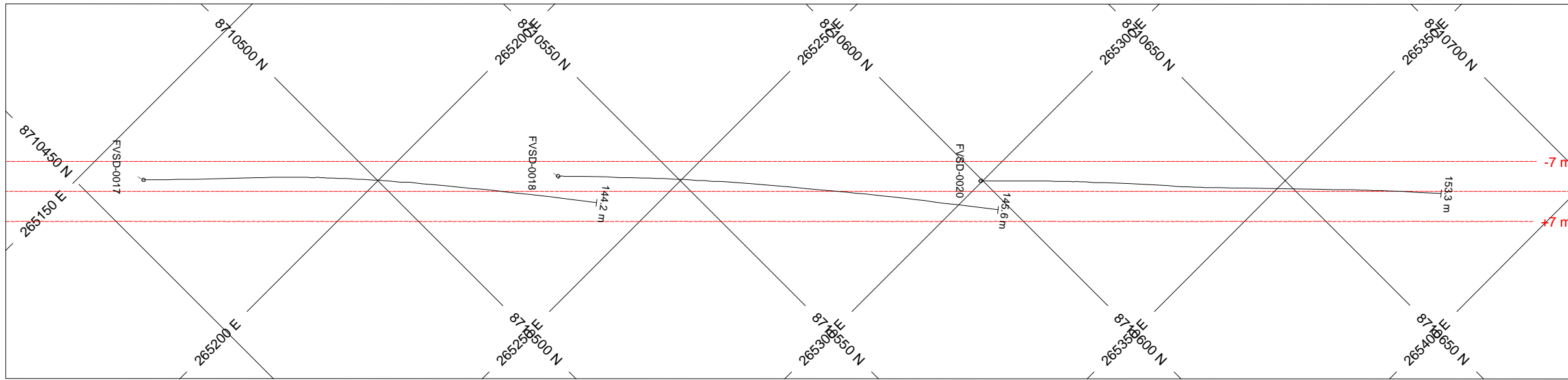
1:17,500



ALMAS PROJECT
ALMAS
TOCANTINS STATE

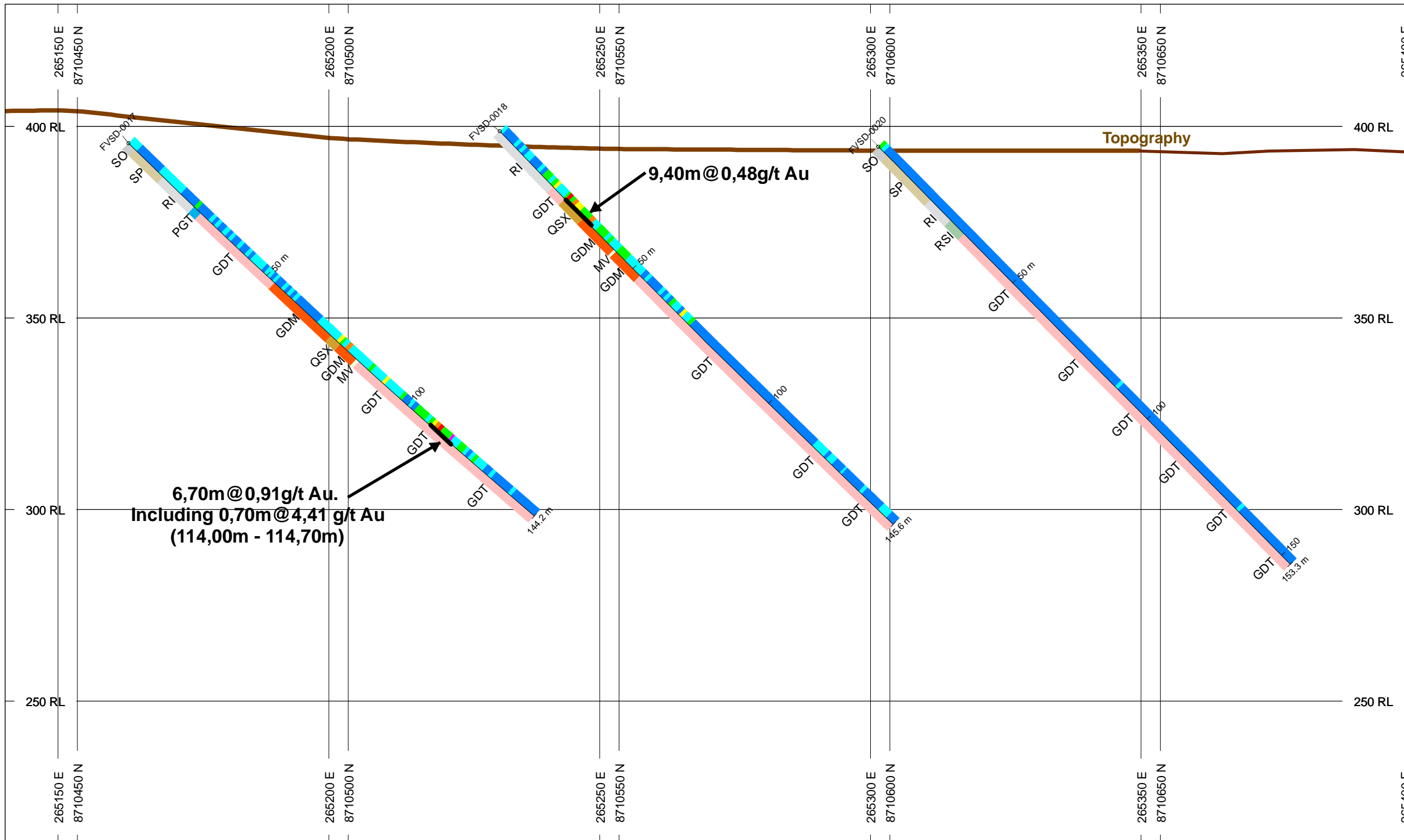
DRILLING AND
 GEOCHEMICAL MAP
 VIRA SAIA TARGET

SAD69 - UTM 23S
 SOURCE: RIO NOVO GOLD, ANEEL,
 IBGE, ANA, CPRM
 DATE: 2011/09/02



HOLES PLOTTED
 TOTAL 3
 FVSD-0017 FVSD-0018 FVSD-0020

SECTION-10 FVSD-0017/0018/0020
VIRA SAIA TARGET
ALMAS PROJECT



TOPOGRAPHY

— Topography

NUMBER BANDS

AU_PPM	L/R	COL	RANGE
3	R	Red	3
1	R	Orange	1
0.5	R	Yellow	0.5
0.3	R	Light Green	0.3
0.05	R	Green	0.05
0.005	R	Cyan	0.005
0	R	Blue	0

ROCK CODES

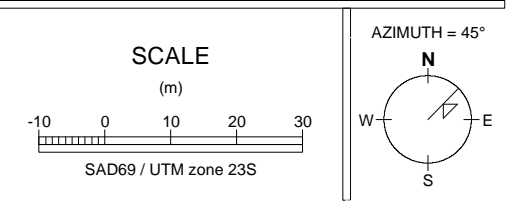
Rock_Code	PAT	LABEL	DESCRIPTION
SO	Grey	SO	Soil
SP	Light Brown	SP	Saprolite
RI	Light Grey	RI	Weathered Rock
QSX	Dark Brown	QSX	Quartz-Sericite Schist
MV	Light Green	MV	Meta-Volcanic
RSI	Light Green	RSI	Semi Weathered Rock
GDM	Orange	GDM	Milonite Granodiorite
GDT	Pink	GDT	Granodiorite
PGT	Blue	PGT	Pegmatite Quartz Feldspar

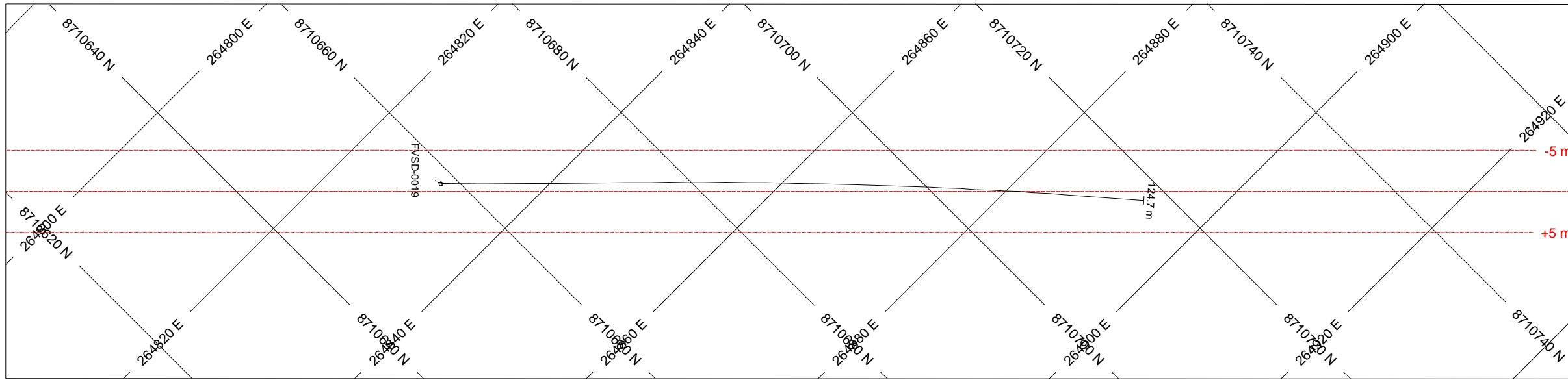
POSTED TEXT

AU_PPM_Labels	L/R	TEXT	ITEMS
Rock_Code	R	-----	All
Rock_Code	L	-----	All

SECTION SPECS:

REF. PT. E, N	265270 m	8710567 m
EXTENTS	367.8 m	219.1 m
SECTION TOP, BOT	431.9 m	212.8 m
TOLERANCE +/-	7 m	



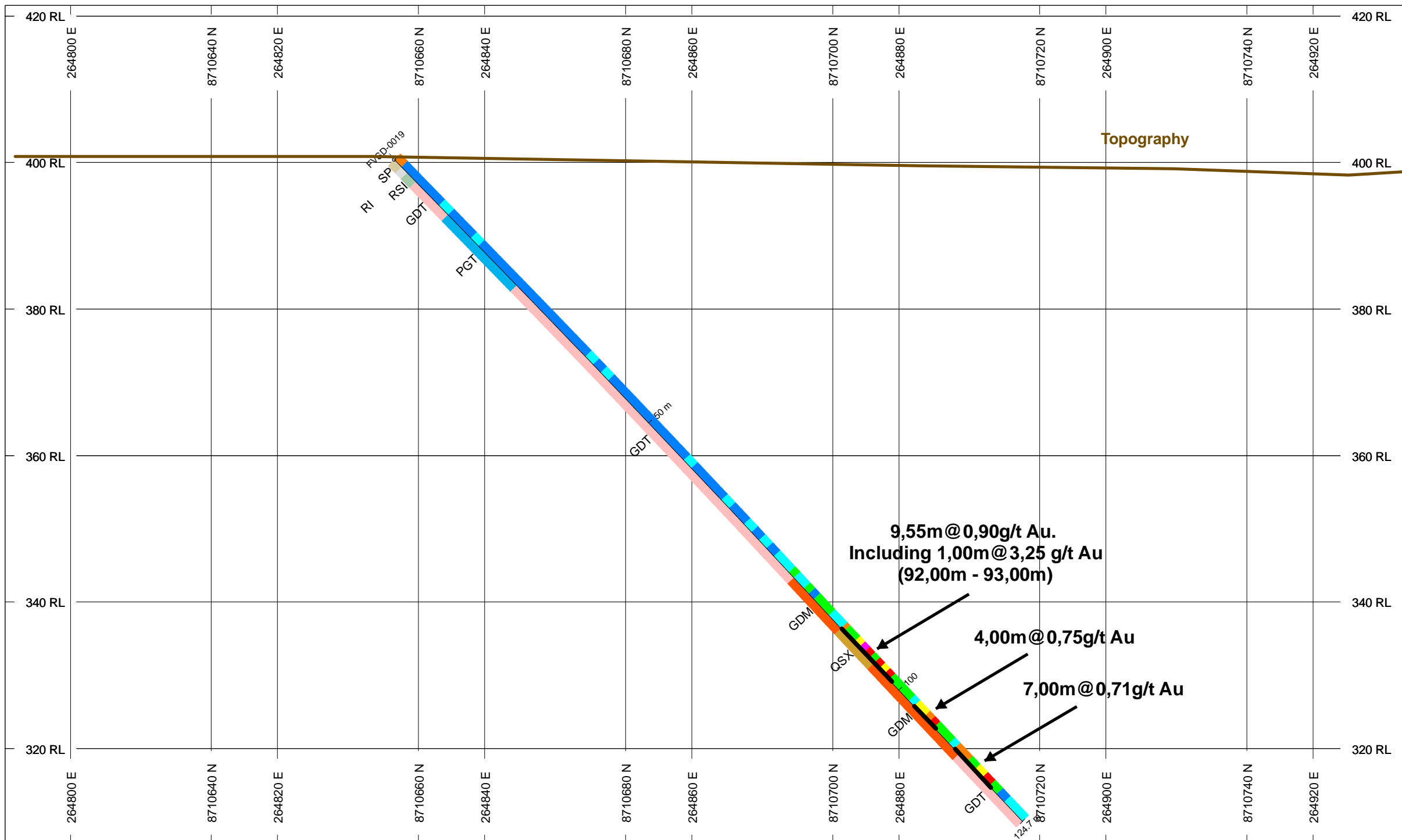


HOLES PLOTTED

TOTAL 1

FVSD-0019

**SECTION-09 FVSD-0019
VIRA SAIA TARGET
ALMAS PROJECT**



TOPOGRAPHY

Topography

NUMBER BANDS AU_PPM	L/R R	COL	RANGE
3		Magenta	3
1		Red	1
0.5		Yellow	0.5
0.3		Green	0.3
0.05		Cyan	0.05
0.005		Blue	0.005
0		Grey	0

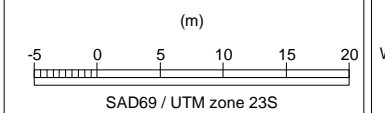
ROCK CODES	PAT	LABEL	DESCRIPTION
Rock_Code	SP	SP	Saprolite
	RI	RI	Weathered Rock
	QSX	QSX	Quartz-Sericite Schist
	RSI	RSI	Semi Weathered Rock
	GDM	GDM	Milonite Granodiorite
	GDT	GDT	Granodiorite
	PGT	PGT	Pegmatite Quartz Feldspar

POSTED TEXT	L/R	TEXT	ITEMS
AU_PPM_Labels	R	-----	All
Rock_Code	L	-----	All

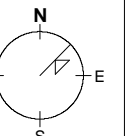
SECTION SPECS:

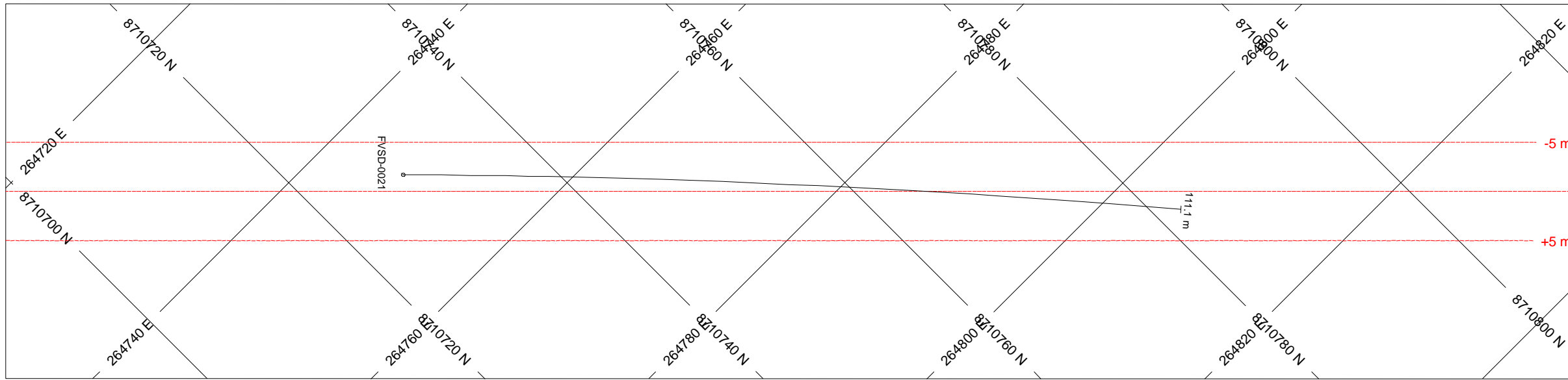
REF. PT. E, N	264862 m	8710688 m
EXTENTS	192.1 m	114.4 m
SECTION TOP, BOT	421.4 m	307 m
TOLERANCE +/-	5 m	

SCALE



AZIMUTH = 45°



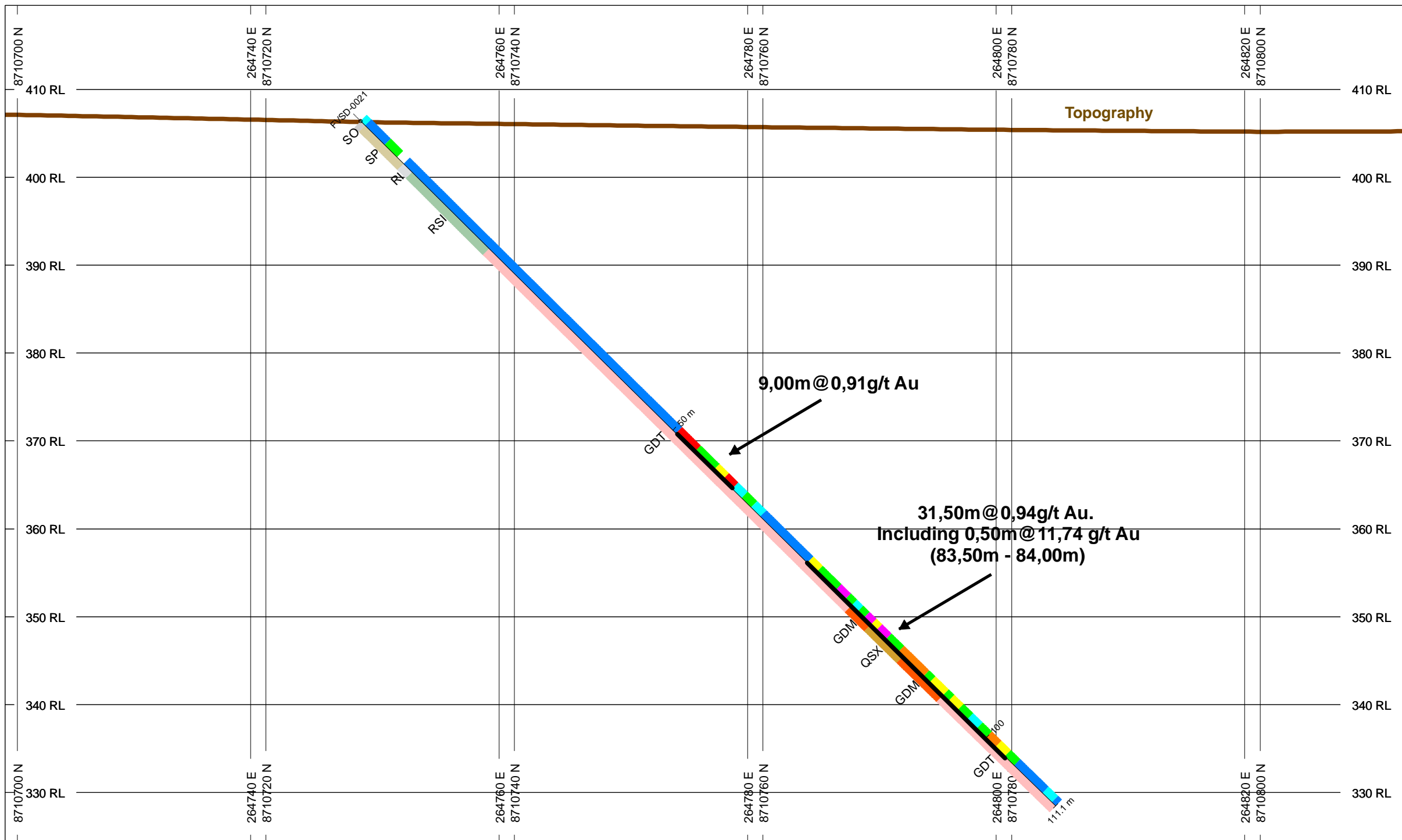


HOLES PLOTTED

TOTAL 1

FVSD-0021

**SECTION-08 FVSD-0021
VIRA SAIA TARGET
ALMAS PROJECT**



TOPOGRAPHY

Topography

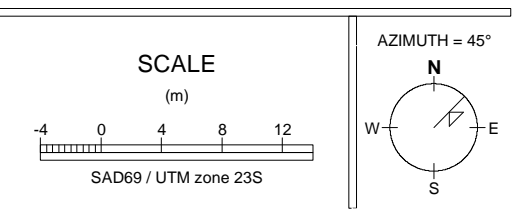
NUMBER BANDS	L/R	COL	RANGE
AU_PPM	R		
			3
			1
			0.5
			0.3
			0.05
			0.005
			0

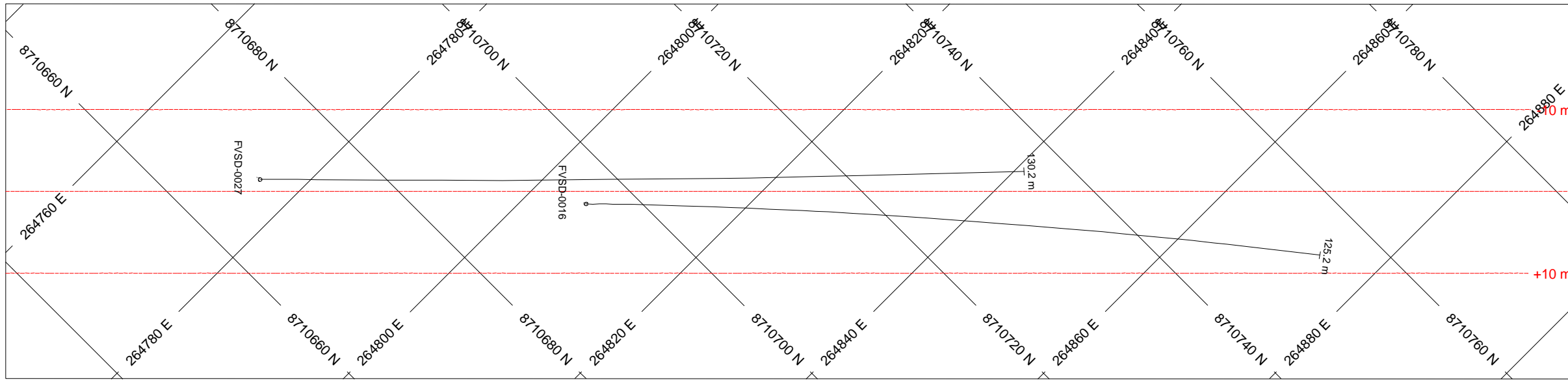
ROCK CODES	PAT	LABEL	DESCRIPTION
Rock_Code		SO	Soil
		SP	Saprolite
		RI	Weathered Rock
		QSX	Quartz-Sericite Schist
		RSI	Semi Weathered Rock
		GDM	Milonite Granodiorite
		GDT	Granodiorite

POSTED TEXT	L/R	TEXT	ITEMS
AU_PPM_Labels	R	-----	All
Rock_Code	L	-----	All

SECTION SPECS:

REF. PT. E, N	264777 m	8710756 m
EXTENTS	160.1 m	95.36 m
SECTION TOP, BOT	419.5 m	324.2 m
TOLERANCE +/-	5 m	



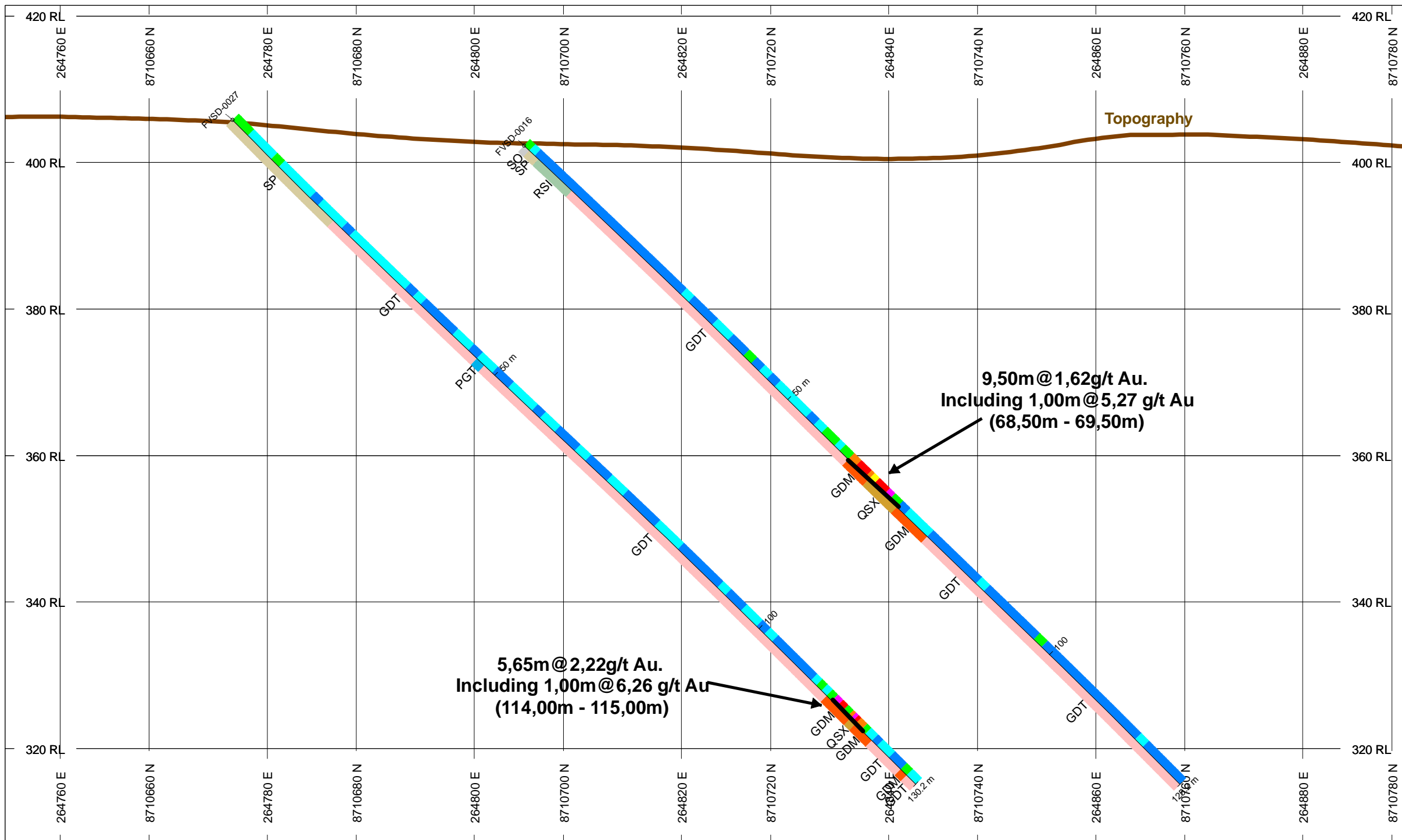


HOLES PLOTTED

TOTAL 2

FVSD-0016 FVSD-0027

**SECTION-02 FVSD-0027
VIRA SAIA TARGET
ALMAS PROJECT**



TOPOGRAPHY

TOPO_PROC_VIRASAIIA_GRID_RNG.GRD

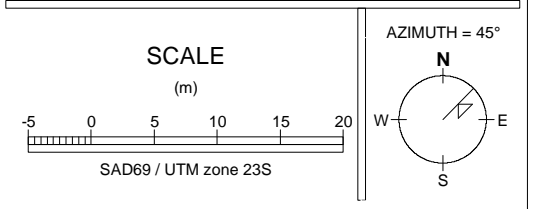
NUMBER BANDS	L/R	COL	RANGE
AU_PPM	R	[Color]	3
		[Color]	1
		[Color]	0.5
		[Color]	0.3
		[Color]	0.05
		[Color]	0.005
		[Color]	0

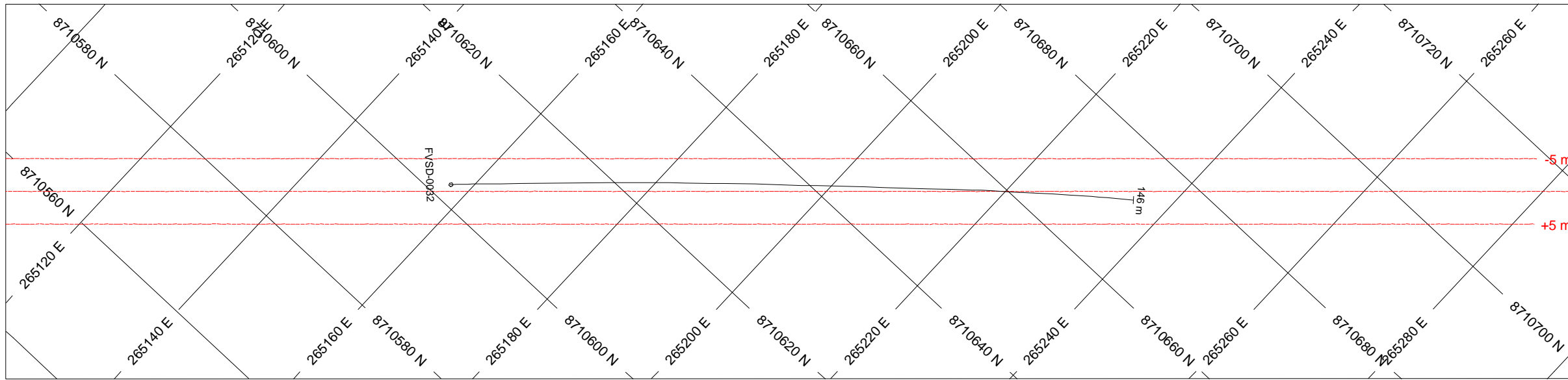
ROCK CODES	PAT	LABEL	DESCRIPTION
Rock_Code	[Color]	SO	Soil
	[Color]	SP	Saprolite
	[Color]	QSX	Quartz-Sericite Schist
	[Color]	RSI	Semi Weathered Rock
	[Color]	GDM	Milonite Granodiorite
	[Color]	GDT	Granodiorite
	[Color]	PGT	Pegmatite Quartz Feldspar

POSTED TEXT	L/R	TEXT	ITEMS
AU_PPM_Labels	R	-----	All
Rock_Code	L	-----	All

SECTION SPECS:

REF. PT. E, N	264823 m	8710714 m
EXTENTS	192.1 m	114.4 m
SECTION TOP, BOT	421.4 m	307 m
TOLERANCE +/-	10 m	

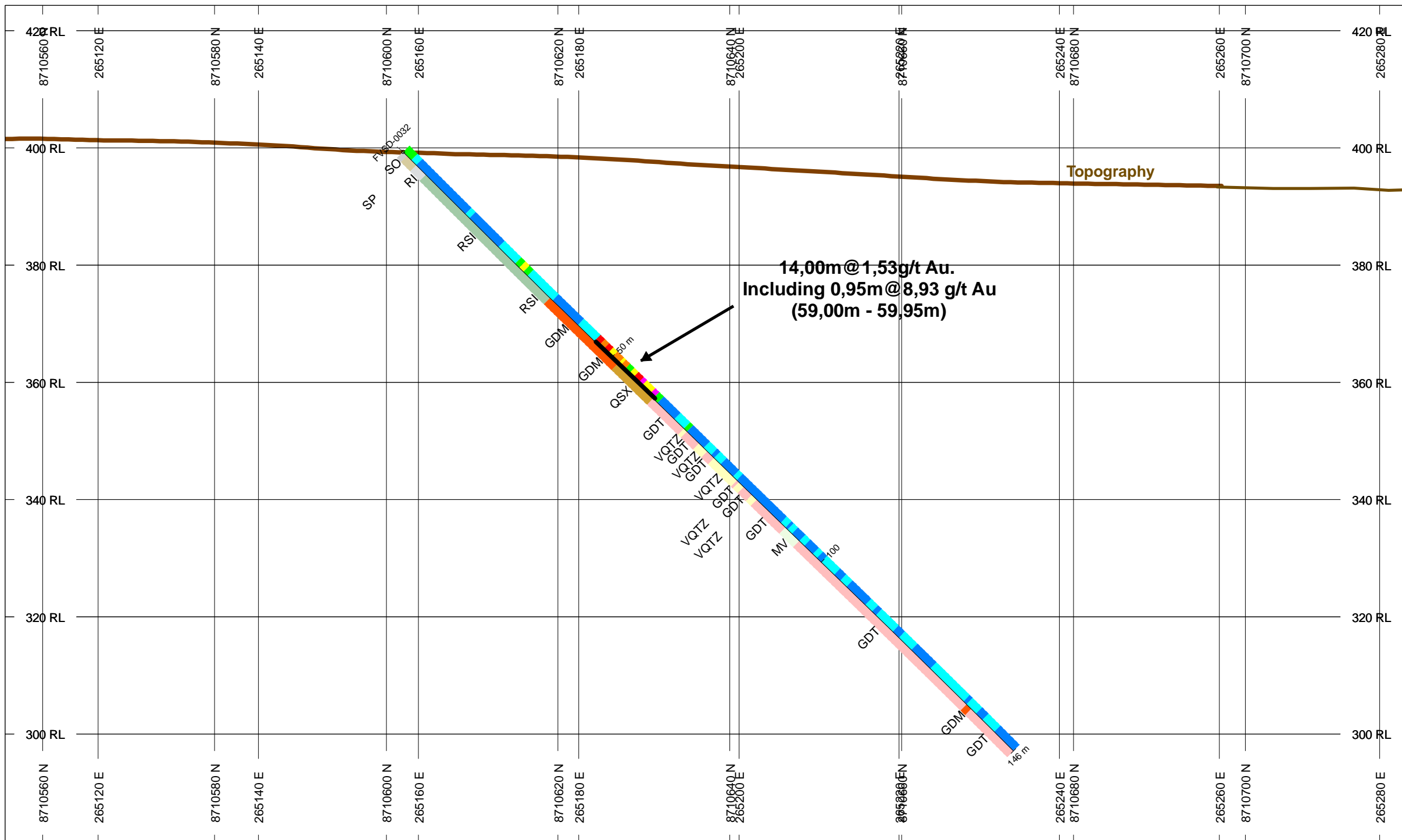




HOLES PLOTTED

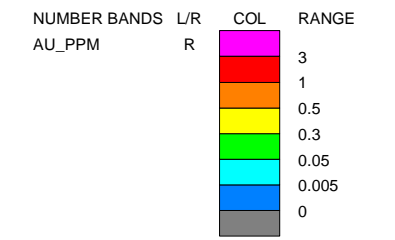
TOTAL 1
FVSD-0032

**SECTION-12 FVSD-0032
VIRA SAIA TARGET
ALMAS PROJECT**



TOPOGRAPHY

TOPO_PROC_VIRASAIA_GRID_RNG.GRD



ROCK CODES	PAT	LABEL	DESCRIPTION
Rock_Code	[Color]	SO	Soil
	[Color]	SP	Saprolite
	[Color]	RI	Weathered Rock
	[Color]	VQTZ	Quartz Vein
	[Color]	QSX	Quartz-Sericite Schist
	[Color]	MV	Meta-Volcanic
	[Color]	RSI	Semi Weathered Rock
	[Color]	GDM	Milonite Granodiorite
	[Color]	GDT	Granodiorite

POSTED TEXT	L/R	TEXT	ITEMS
AU_PPM_Labels	R	-----	All
Rock_Code	L	-----	All

SECTION SPECS:

REF. PT. E, N	265196 m	8710638 m
EXTENTS	240.1 m	143 m
SECTION TOP, BOT	424.3 m	281.3 m
TOLERANCE +/-	5 m	

