

Figure 1. A selection of long holes from part of the “High Grade Zinc Zone” showing the weighted average intercepts of the long holes in the area. Many of the long holes ended in mineralization.

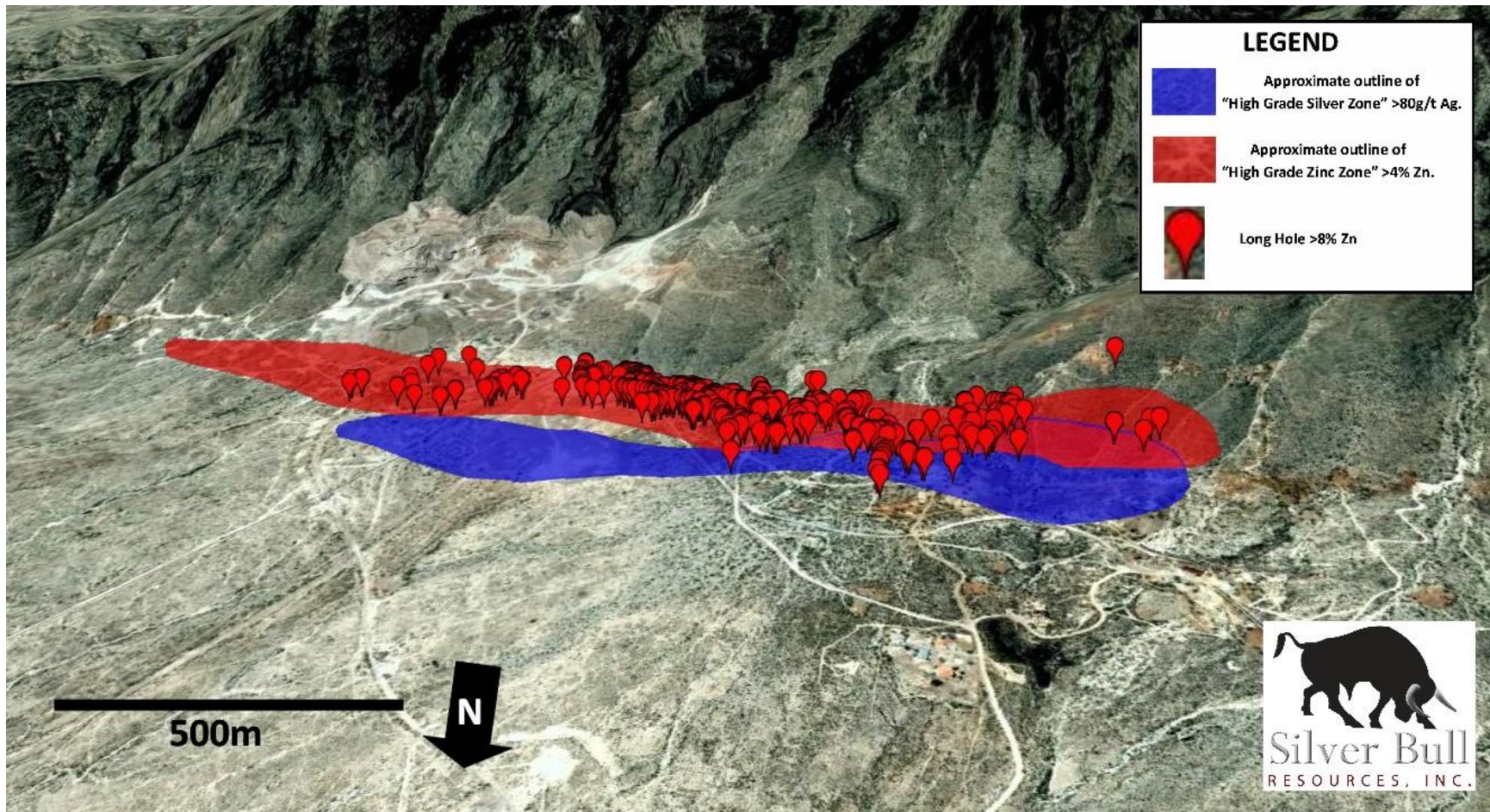


Figure 2. Location of the 517 long holes grading at >8% Zn which define the "High Grade Zinc Zone" (red). Also shown is the "High Grade Silver Zone" (blue) which is defined by approximately 700 long holes with 242 grading >100g/t Ag and is currently being drilled out by Silver Bull. The Zinc Zone lies parallel to and slightly below the Shallow Silver Zone.