

Figure 1. Location of the long hole twinning program at the eastern end of the property. The entire Shallow Silver Zone as defined in the recent NI43-101 resource report dated July 5, 2012 completed by SRK Consulting (Canada) Inc. is shown in purple.



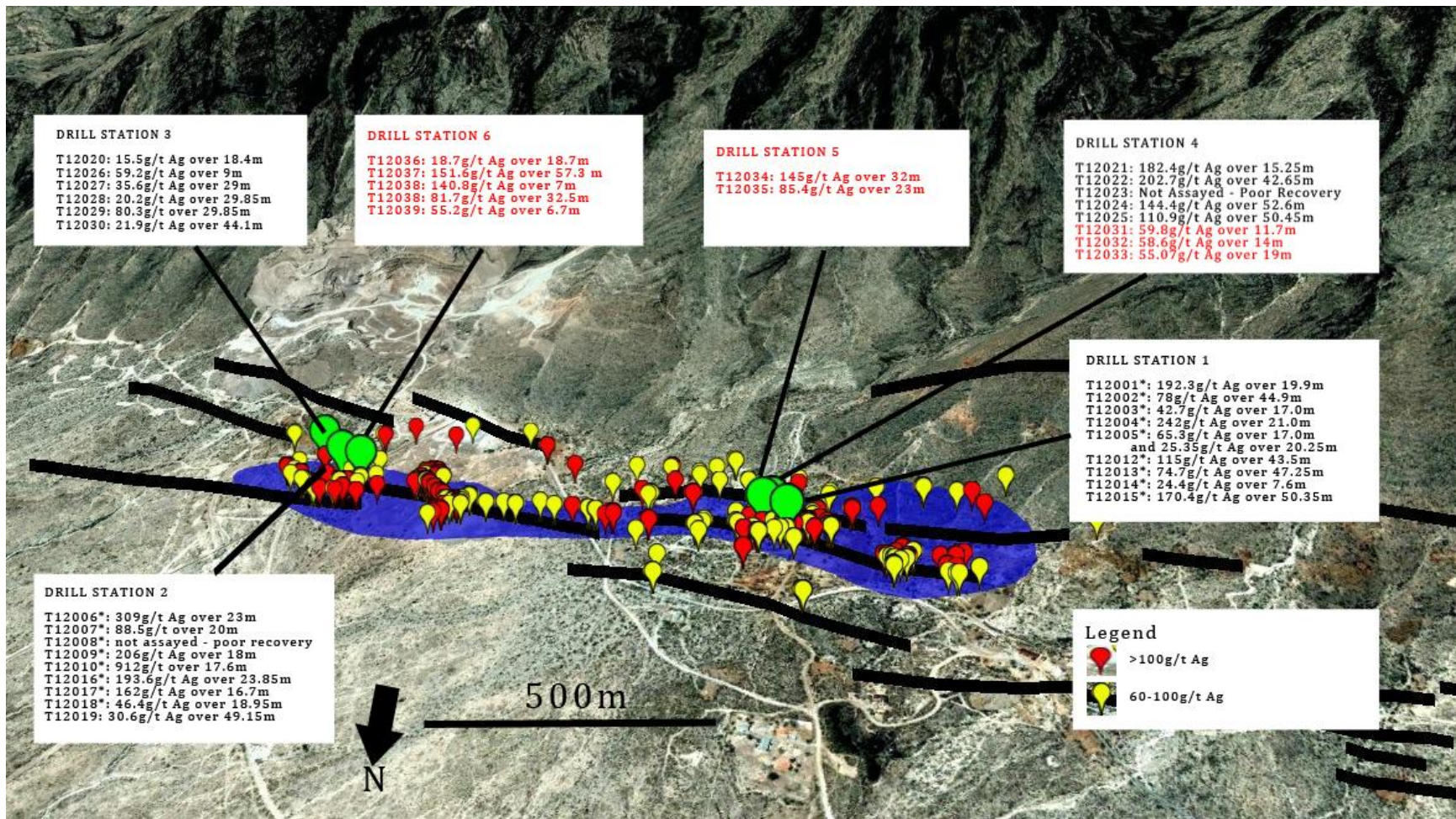


Figure 2. The locations of the first six underground drill stations in relation to mapped structures at the eastern end of the Shallow Silver Zone and historical long holes with mineralized intervals greater than 60g/t Ag. The high grade silver mineralization is hosted along east-west striking structures that are traceable for over 3 kilometers. (red font refers to drill holes reported in this news release)