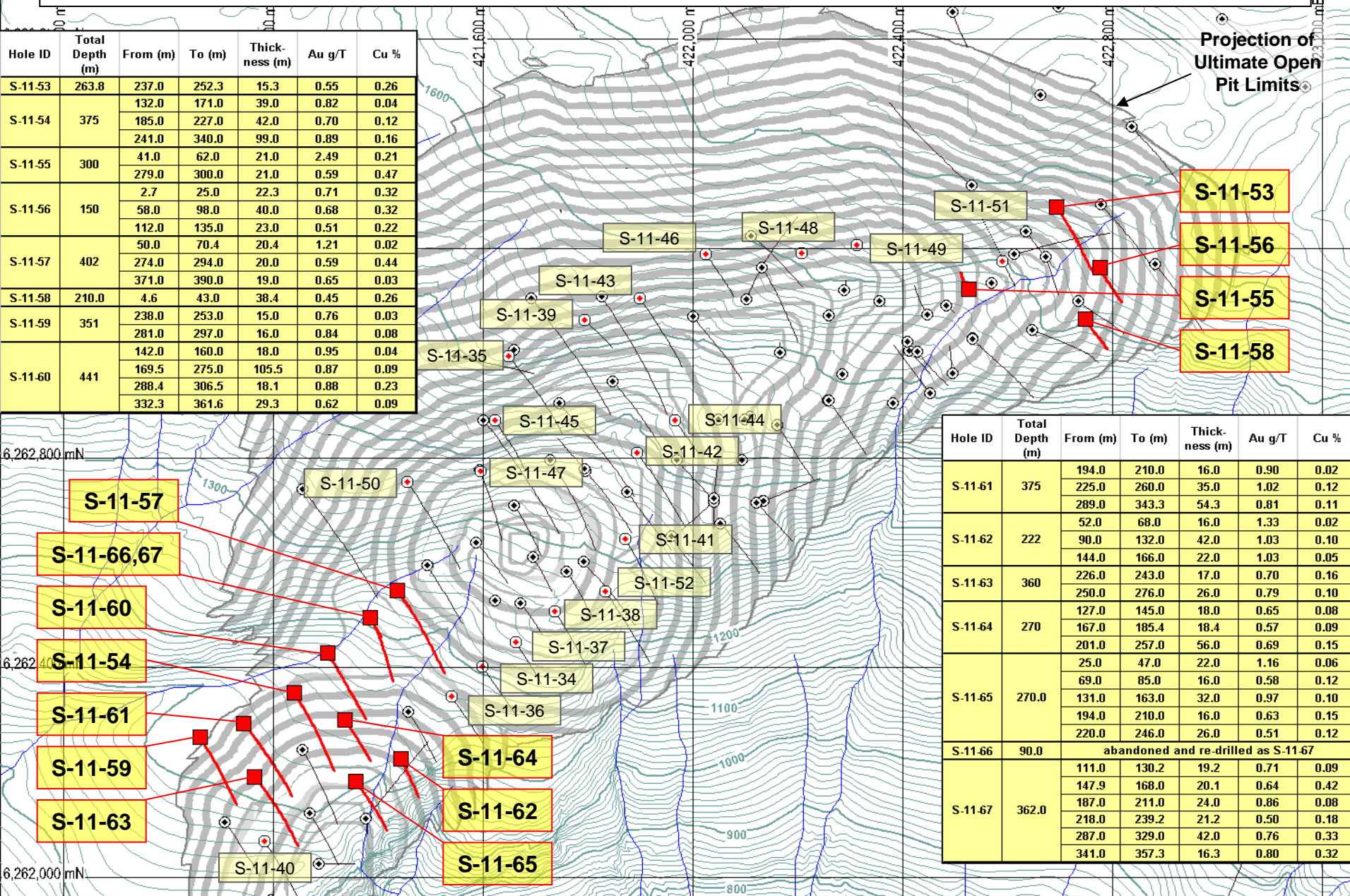


# SULPHURETS ZONE 2011 DRILL HOLE ASSAY COMPOSITES – Nov. 21, 2011



Hole ID	Total Depth (m)	From (m)	To (m)	Thick-ness (m)	Au g/T	Cu %
S-11-53	263.8	237.0	252.3	15.3	0.55	0.26
		132.0	171.0	39.0	0.82	0.04
S-11-54	375	185.0	227.0	42.0	0.70	0.12
		241.0	340.0	99.0	0.89	0.16
S-11-55	300	41.0	62.0	21.0	2.49	0.21
		279.0	300.0	21.0	0.59	0.47
S-11-56	150	2.7	25.0	22.3	0.71	0.32
		58.0	98.0	40.0	0.68	0.32
S-11-57	402	112.0	135.0	23.0	0.51	0.22
		50.0	70.4	20.4	1.21	0.02
S-11-58	210.0	274.0	294.0	20.0	0.59	0.44
		371.0	390.0	19.0	0.65	0.03
S-11-59	351	4.6	43.0	38.4	0.45	0.26
S-11-60	441	238.0	253.0	15.0	0.76	0.03
		281.0	297.0	16.0	0.84	0.08
S-11-61	441	142.0	160.0	18.0	0.95	0.04
		169.5	275.0	105.5	0.87	0.09
		288.4	306.5	18.1	0.88	0.23
S-11-62	441	332.3	361.6	29.3	0.62	0.09

Projection of Ultimate Open Pit Limits

- S-11-53
- S-11-56
- S-11-55
- S-11-58

Hole ID	Total Depth (m)	From (m)	To (m)	Thick-ness (m)	Au g/T	Cu %
S-11-61	375	194.0	210.0	16.0	0.90	0.02
		225.0	260.0	35.0	1.02	0.12
		289.0	343.3	54.3	0.81	0.11
S-11-62	222	52.0	68.0	16.0	1.33	0.02
		90.0	132.0	42.0	1.03	0.10
S-11-63	360	144.0	166.0	22.0	1.03	0.05
		226.0	243.0	17.0	0.70	0.16
S-11-64	270	250.0	276.0	26.0	0.79	0.10
		127.0	145.0	18.0	0.65	0.08
S-11-65	270.0	167.0	185.4	18.4	0.57	0.09
		201.0	257.0	56.0	0.69	0.15
		25.0	47.0	22.0	1.16	0.06
S-11-66	270.0	69.0	85.0	16.0	0.58	0.12
		131.0	163.0	32.0	0.97	0.10
		194.0	210.0	16.0	0.63	0.15
		220.0	246.0	26.0	0.51	0.12
S-11-66	90.0	abandoned and re-drilled as S-11-67				
S-11-67	362.0	111.0	130.2	19.2	0.71	0.09
		147.9	168.0	20.1	0.64	0.42
		187.0	211.0	24.0	0.86	0.08
		218.0	239.2	21.2	0.50	0.18
		287.0	329.0	42.0	0.76	0.33
S-11-67	362.0	341.0	357.3	16.3	0.80	0.32

**SEABRIDGE GOLD**

