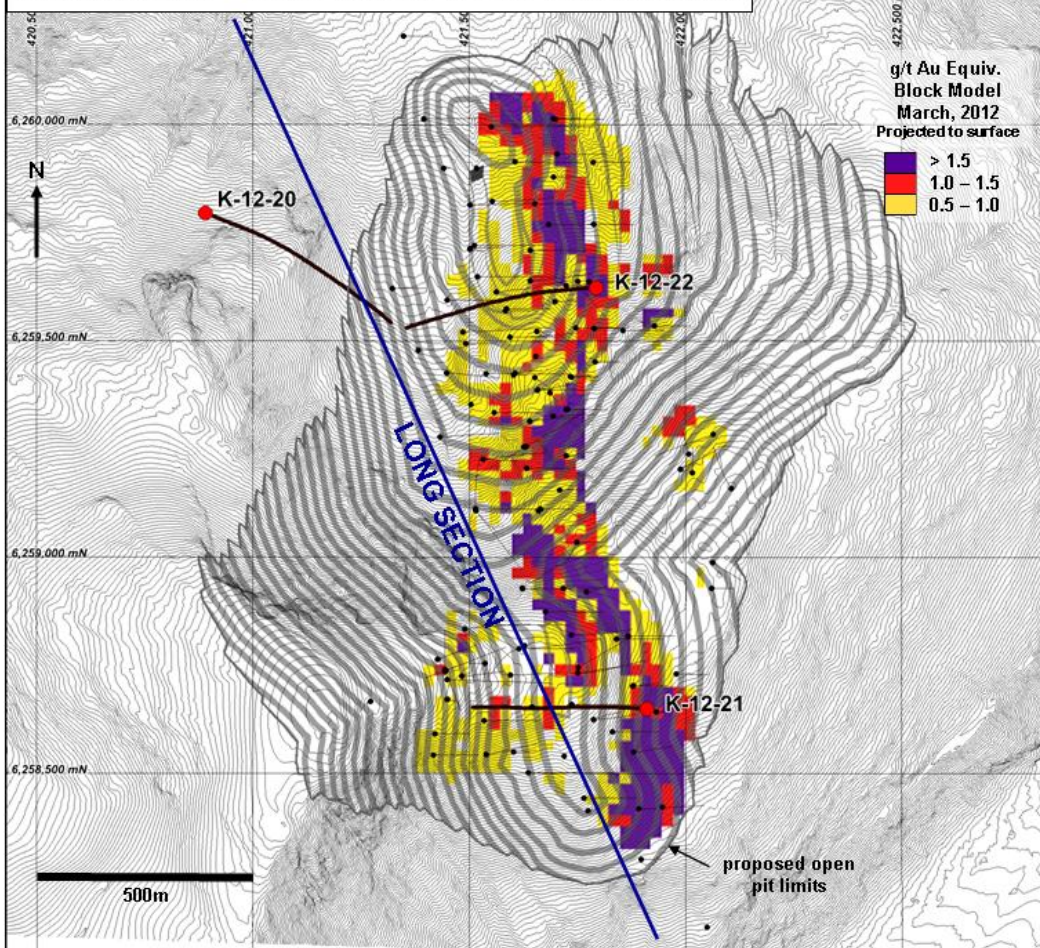
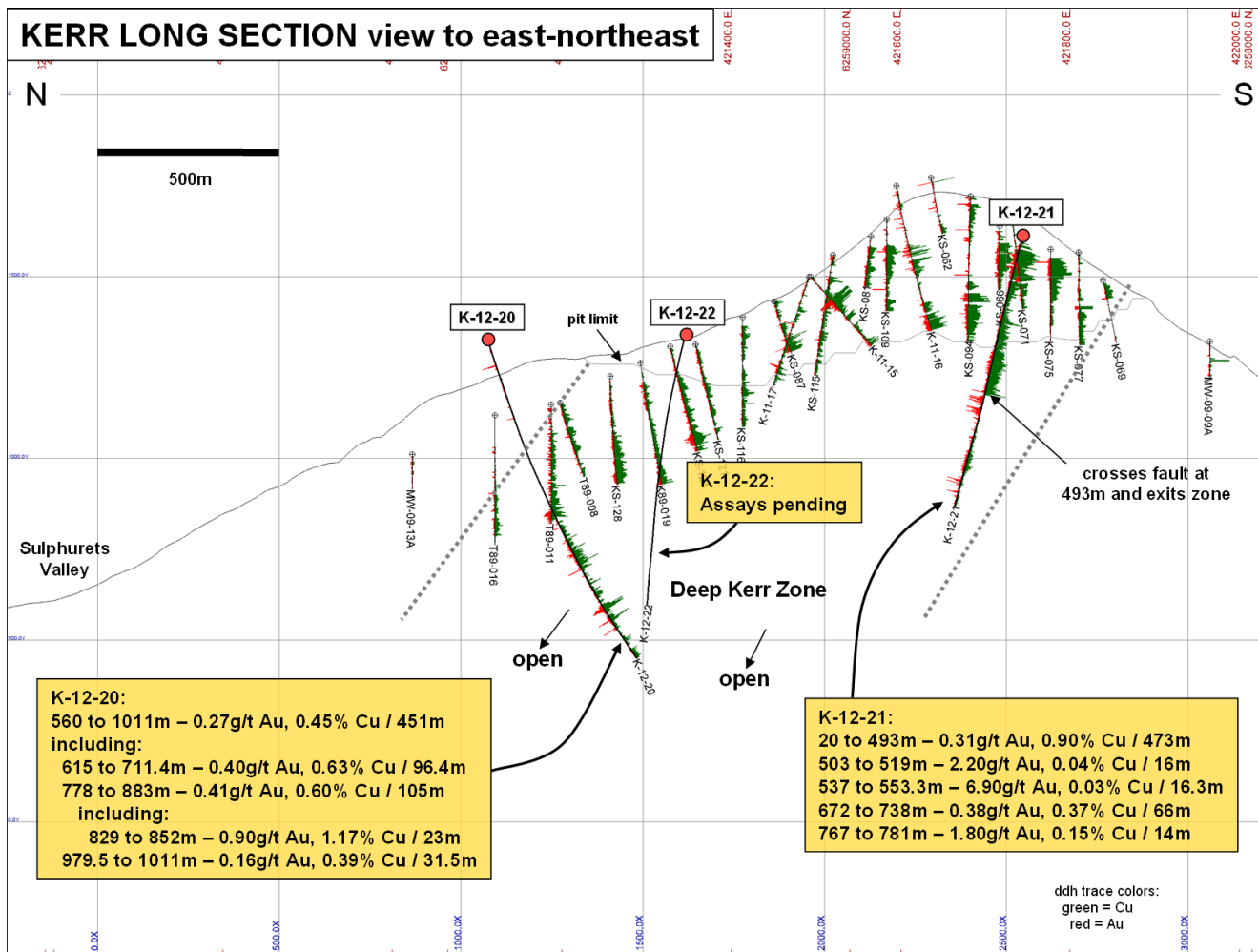


KERR ZONE – 2012 DRILL HOLE LOCATIONS



KERR LONG SECTION view to east-northeast



K-12-20:
 560 to 1011m – 0.27g/t Au, 0.45% Cu / 451m
 including:
 615 to 711.4m – 0.40g/t Au, 0.63% Cu / 96.4m
 778 to 883m – 0.41g/t Au, 0.60% Cu / 105m
 including:
 829 to 852m – 0.90g/t Au, 1.17% Cu / 23m
 979.5 to 1011m – 0.16g/t Au, 0.39% Cu / 31.5m

K-12-21:
 20 to 493m – 0.31g/t Au, 0.90% Cu / 473m
 503 to 519m – 2.20g/t Au, 0.04% Cu / 16m
 537 to 553.3m – 6.90g/t Au, 0.03% Cu / 16.3m
 672 to 738m – 0.38g/t Au, 0.37% Cu / 66m
 767 to 781m – 1.80g/t Au, 0.15% Cu / 14m

K-12-22:
 Assays pending

ddh trace colors:
 green = Cu
 red = Au