

SW

NE

**SH-82-2:**  
9.94 g/t Au @ 0.40m  
(included in 2.60 g/t Au @ 1.92m)

**VH-59:**  
6.51 g/t Au @ 0.30m

**ML-08-03 :**  
2.01 g/t Au @0.86m

**ML-08-02 :**  
5.11 g/t Au @0.90m

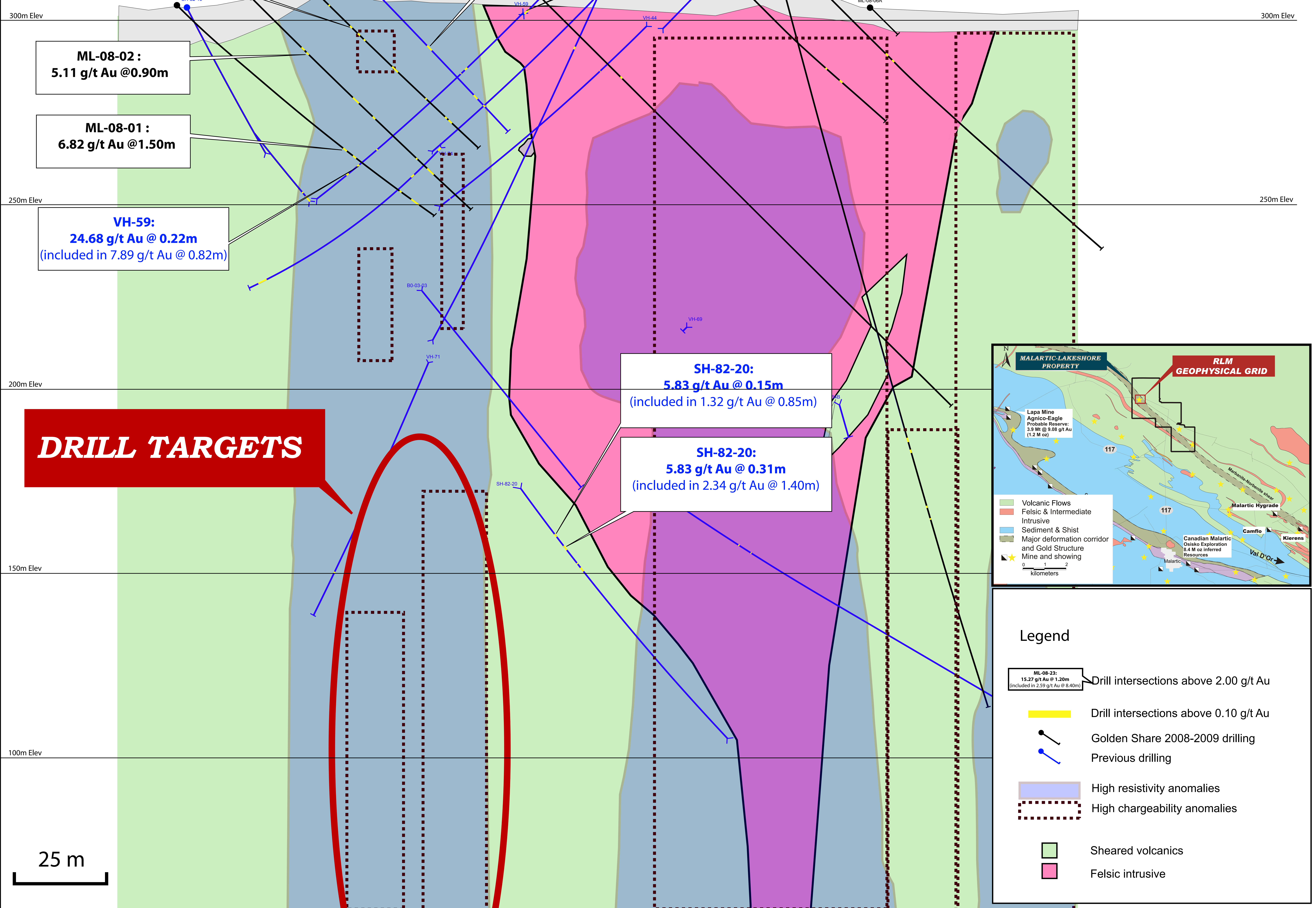
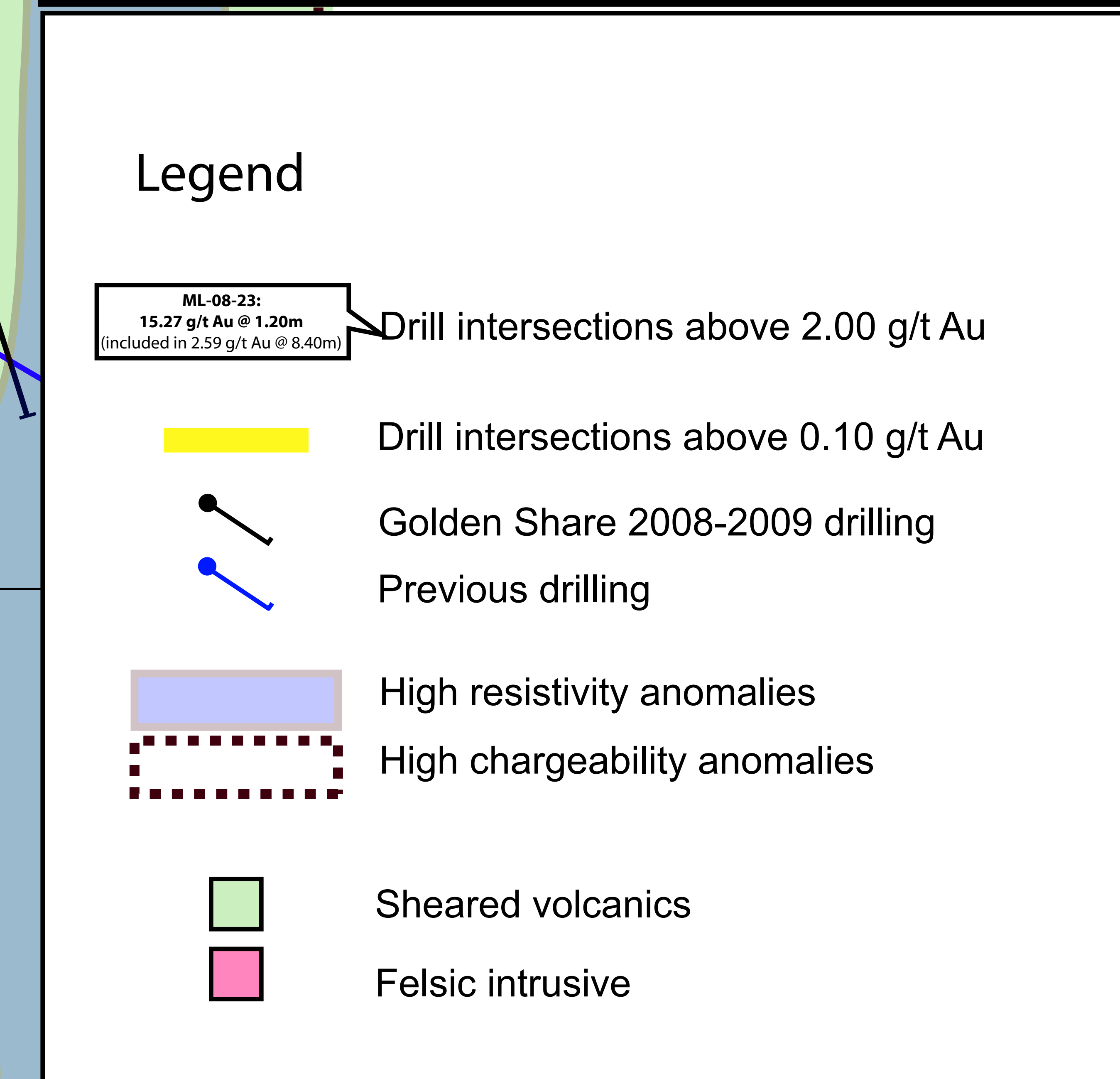
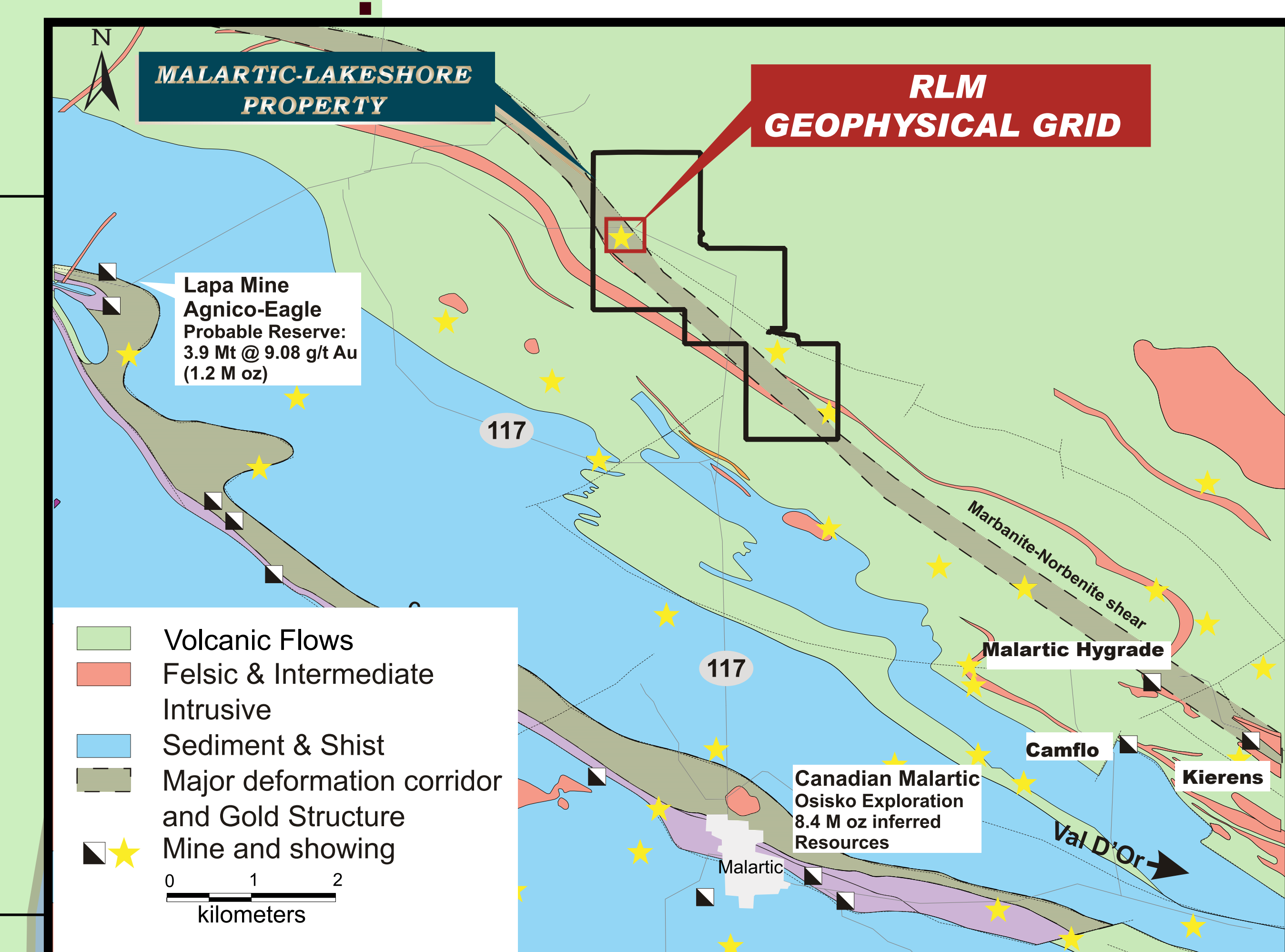
**ML-08-01 :**  
6.82 g/t Au @1.50m

**VH-59:**  
24.68 g/t Au @ 0.22m  
(included in 7.89 g/t Au @ 0.82m)

**SH-82-20:**  
5.83 g/t Au @ 0.15m  
(included in 1.32 g/t Au @ 0.85m)

**SH-82-20:**  
5.83 g/t Au @ 0.31m  
(included in 2.34 g/t Au @ 1.40m)

**DRILL TARGETS**



25 m