

Figure 1. Location of planned drill collars (red collars) within the Croteau Bouchard Shear Zone (CBSZ).

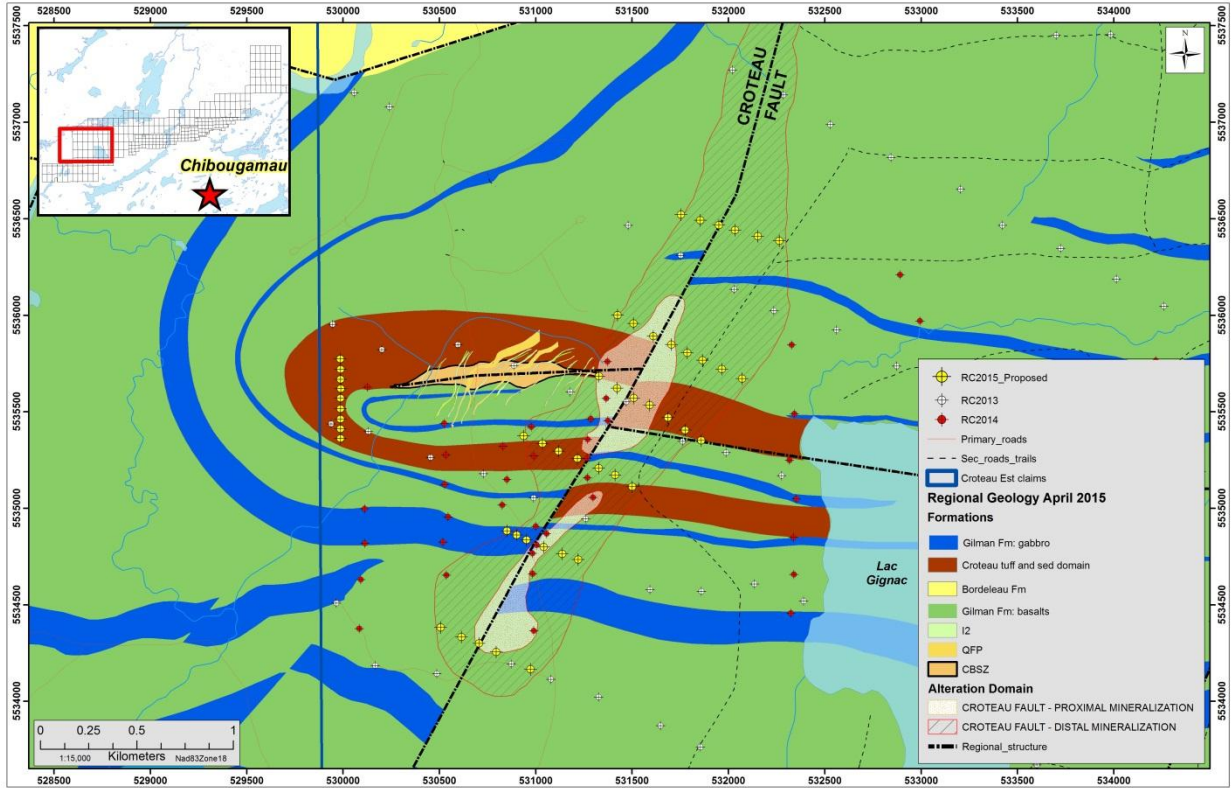


Figure 2. Location of planned reverse circulation drill collars (yellow collars), providing definition to the mineralization potential of the Croteau Fault and its inferred association with the CBSZ. This information is required to provide scope for the sighting of core holes within this target area for future core drilling on the property.

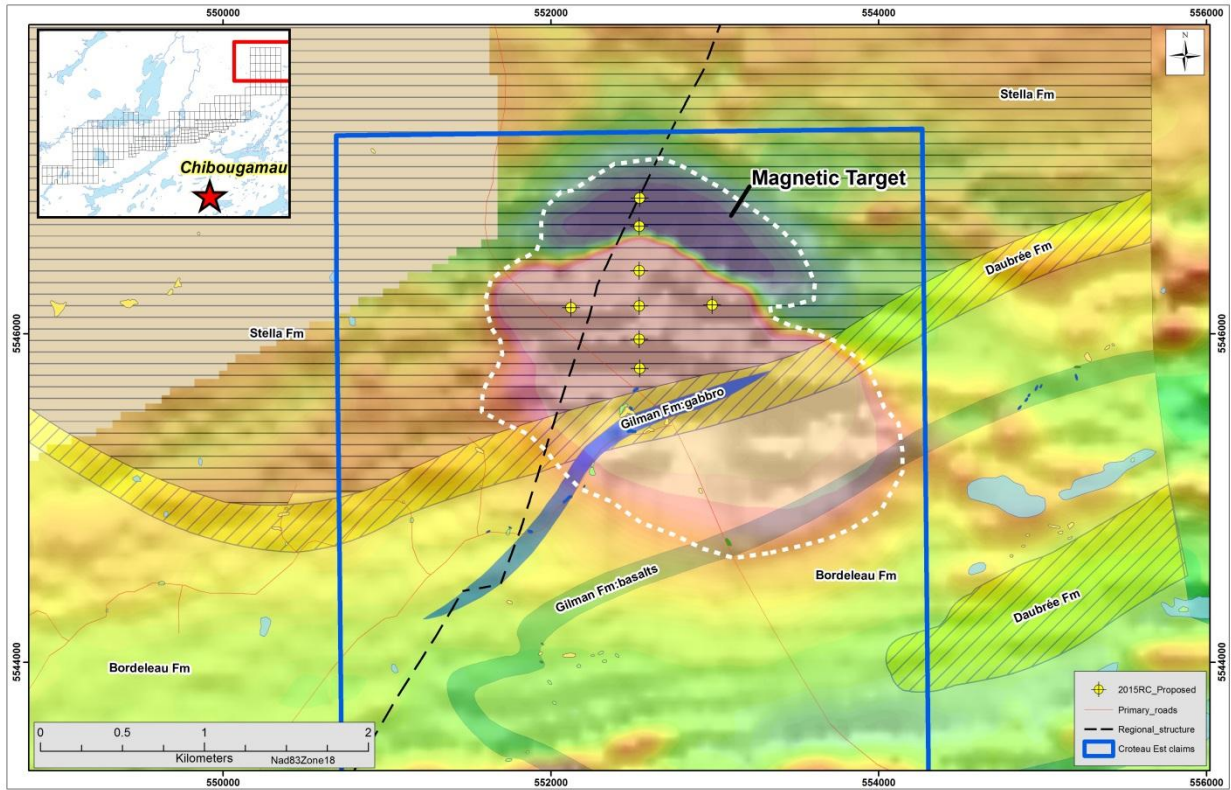


Figure 3. Location of planned reverse circulation drill holes to test a prominent magnetic target, located on the northeastern part of the property.