

Figure 1. The locations of the underground drill stations in relation to mapped structures at the eastern end of the Shallow Silver Zone. The high grade zinc zone (outlined in red) is situated below and adjacent to the high grade silver zone and has a strike of over 1.5km. Red place markers in the zinc zone represent historic long holes that intercepted >10% zinc over intercepts >10 meters in length.

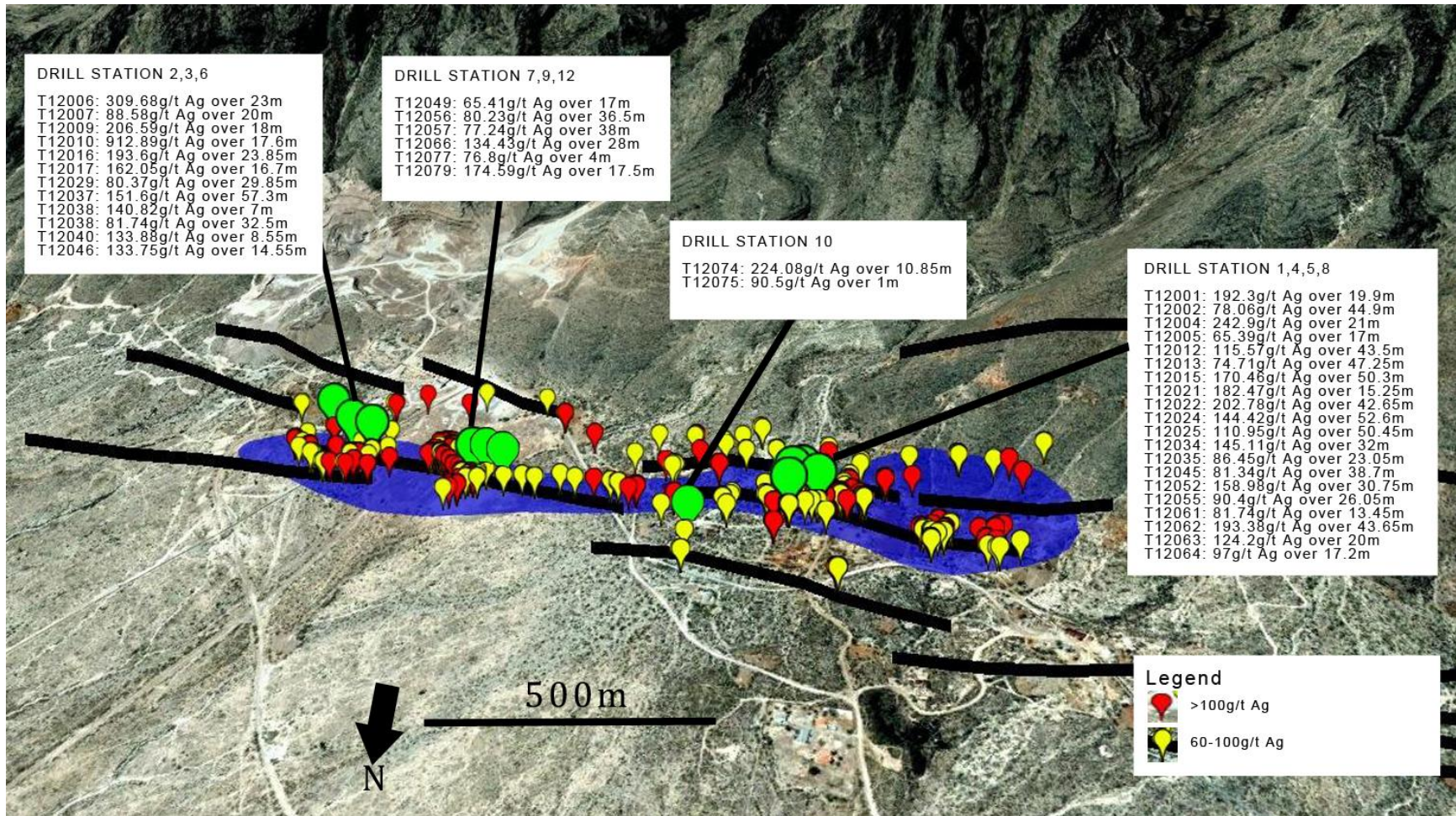


Figure 2. The locations of the underground drill stations in the high grade silver zone in relation to mapped structures at the eastern end of the Shallow Silver Zone. The high grade silver mineralization is hosted along east-west striking structures that are traceable for over 3 kilometers.