

Figure 2. The Shallow Silver Zone (blue) showing the location of the high grade area defined by long holes to be tested by the 3,000 meter underground drill program. Also marked are the collar locations of Silver Bull's surface drill program since April 2011. The surface program has focused on the western and northern extents of the Shallow Silver Zone where as most of the historical work completed at Sierra Mojada which includes over 3,000 long holes, and 10,000 channel samples, was focused on eastern end of the deposit.



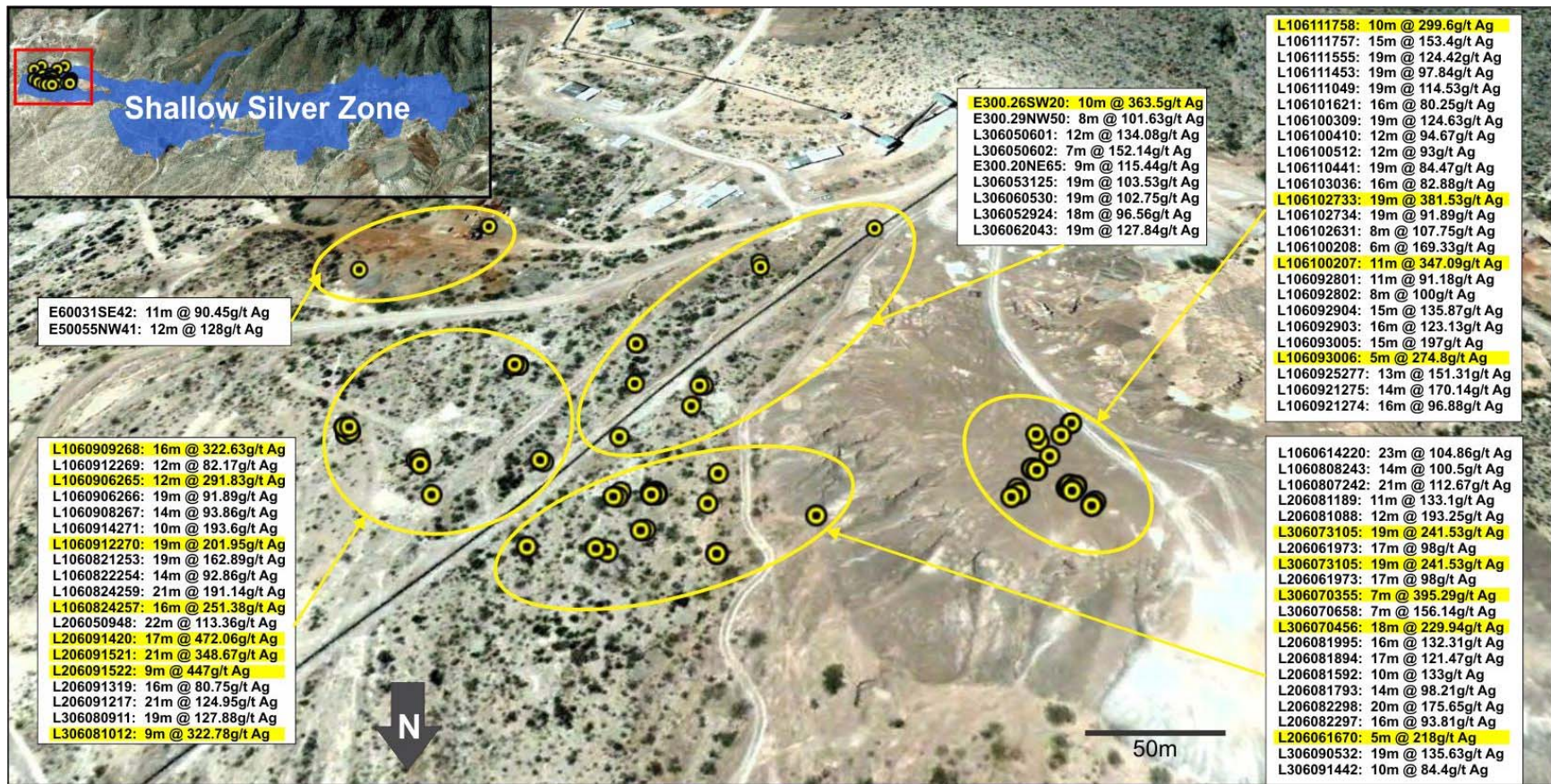


Figure 3. Location and weighted average of the high grade long holes projected to surface