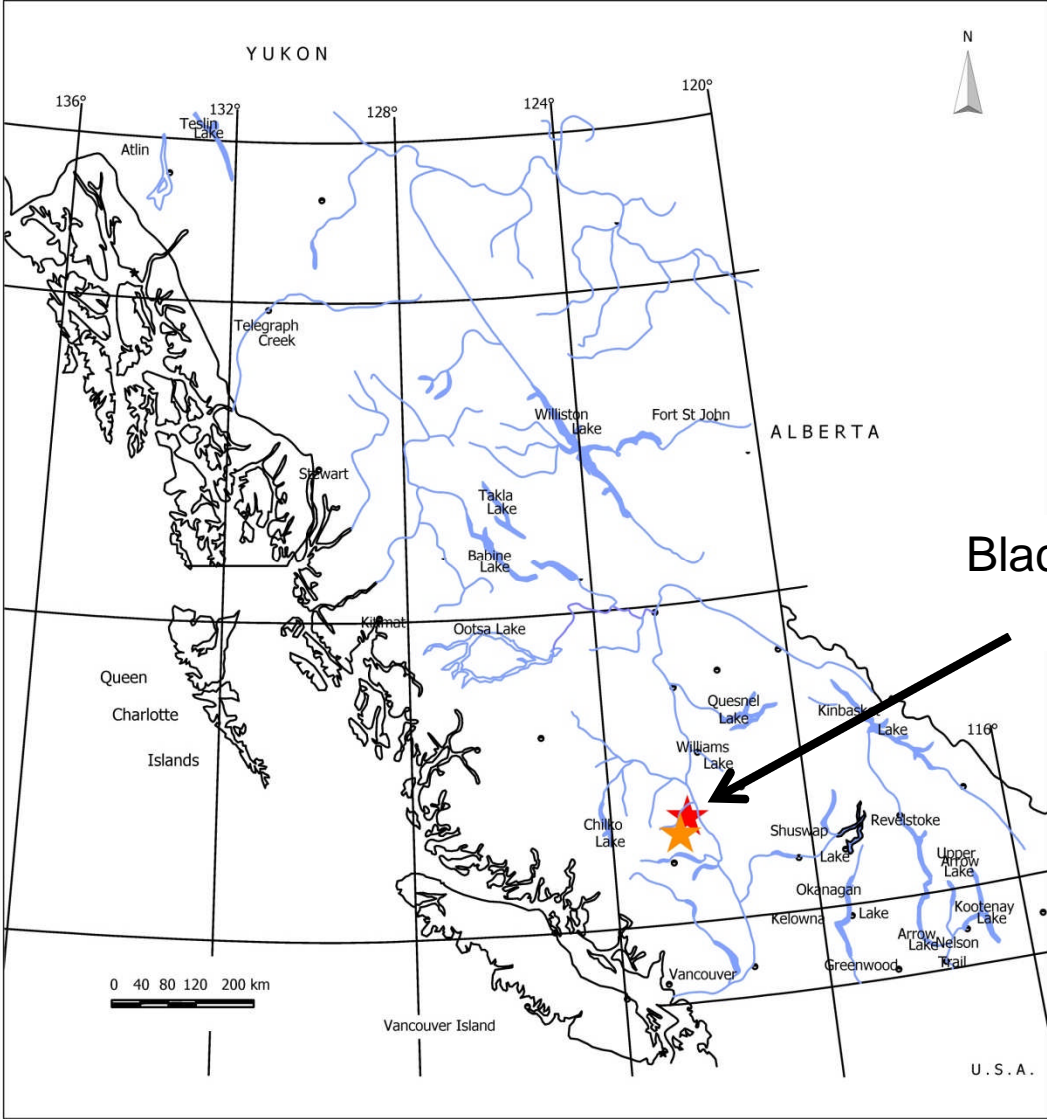


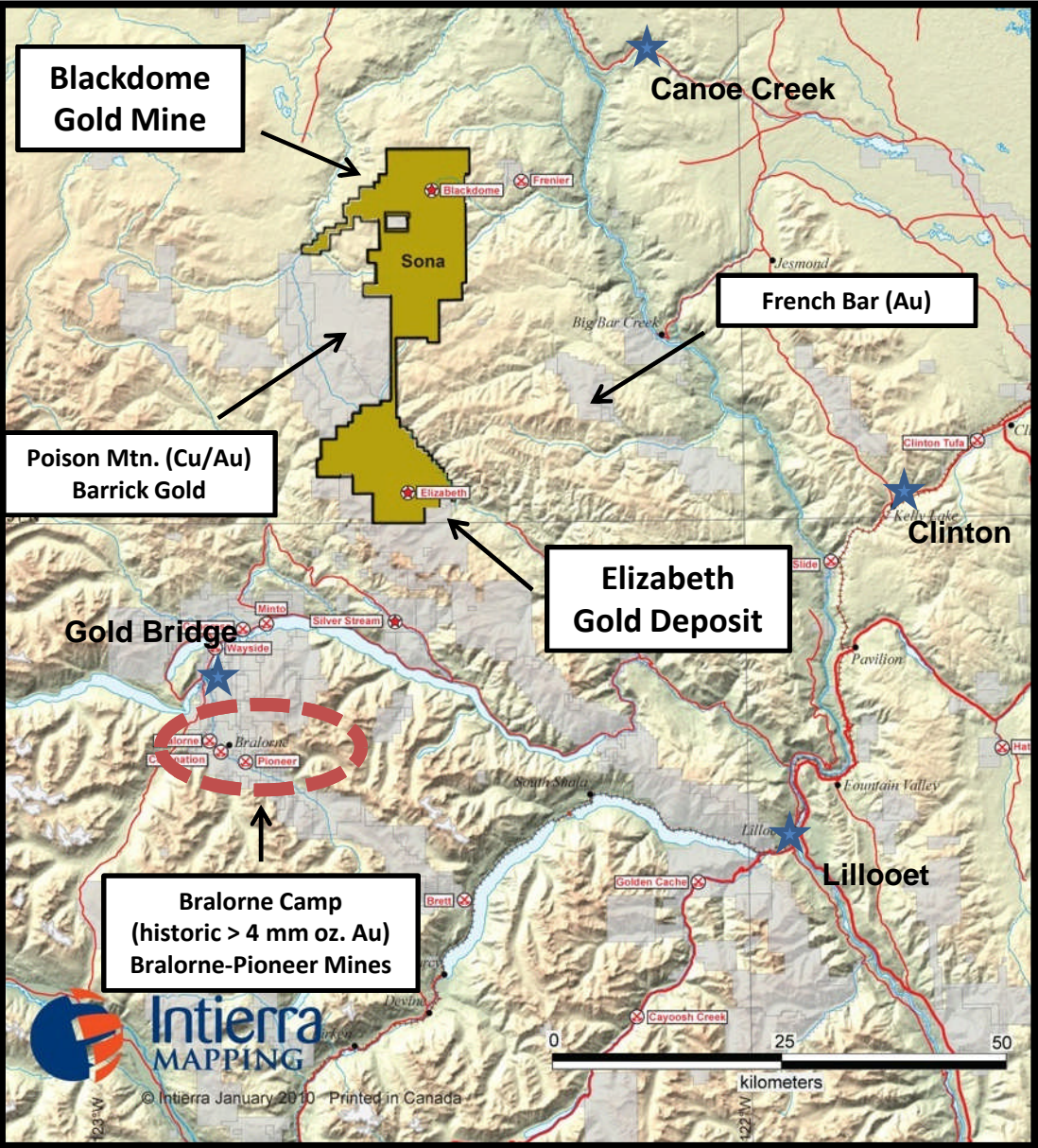
# Location Map

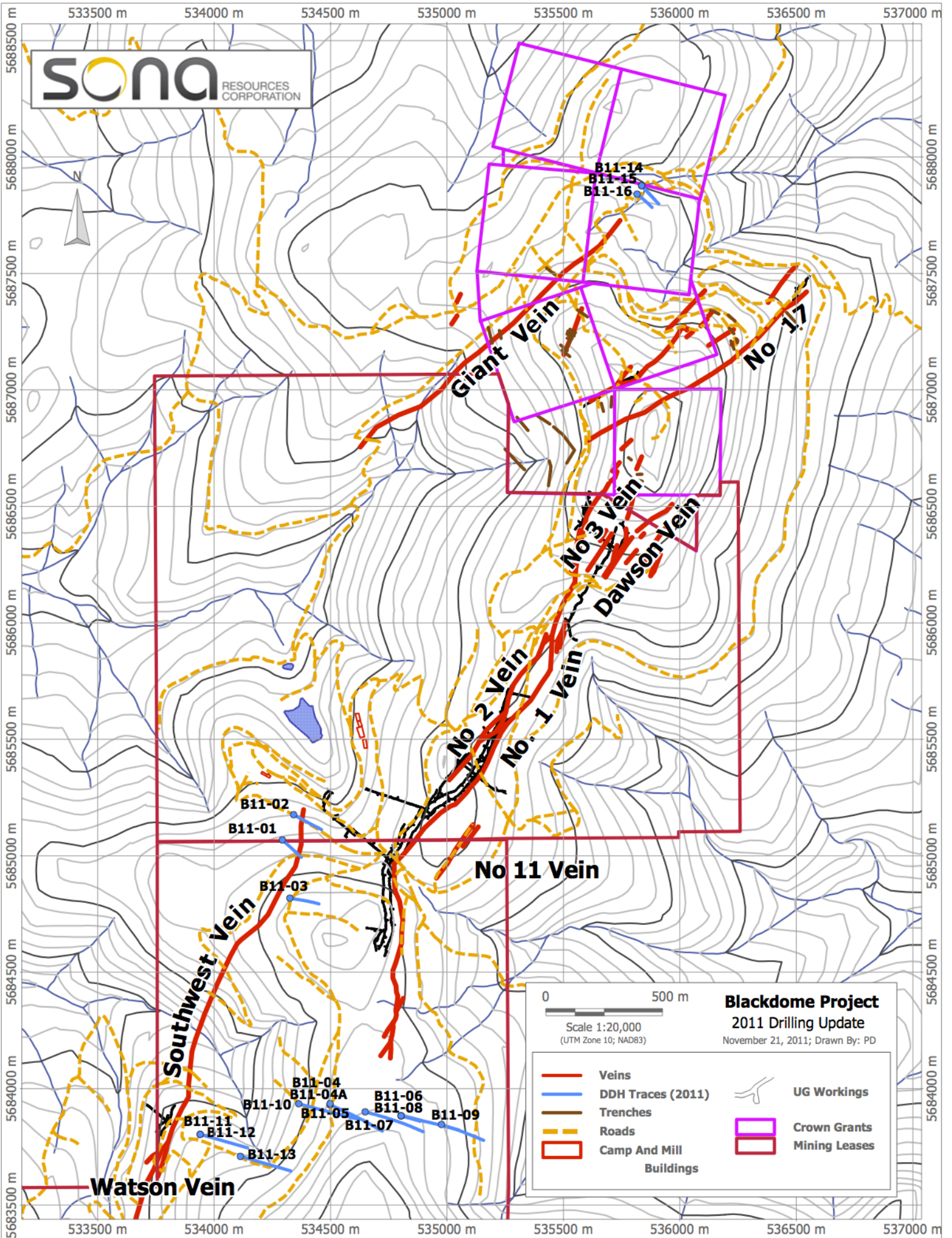


**Blackdome-Elizabeth  
Gold Project**

# Mineral Claims

# SYS.V SONA





0 500 m  
 Scale 1:20,000  
 (UTM Zone 10; NAD83)

**Blackdome Project**  
 2011 Drilling Update  
 November 21, 2011; Drawn By: PD

- |  |                         |  |               |
|--|-------------------------|--|---------------|
|  | Veins                   |  | UG Workings   |
|  | DDH Traces (2011)       |  | Crown Grants  |
|  | Trenches                |  | Mining Leases |
|  | Roads                   |  |               |
|  | Camp And Mill Buildings |  |               |

# Blackdome-Elizabeth Gold Project



Blackdome Mill  
Permitted 300-tonne-per-day facility

# Blackdome Gold Mine

1947 Discovered by prospector

1952 First underground drifting

1977 Acquisition by Blackdome Exploration

1979 - 1983 Drilling & underground drifting

1984 - 1985 Developed by Blackdome Mining

1986 - 1989 Production

- 225,000 oz. Au recovered
- 20g Au/t grade
- 10g Au/t cutoff
- Recoveries of 93% Au and 78% Ag

1991 Mine mothballed, sold to private group

1995 Vended to Sona

1995 to 2011 work programs

- 6,547 oz. Au produced in 1999
- Claims increased to 196 sq. km.
- Drilled 39 holes for 8,393 metres
- Tailings sampled, metallurgical analysis
- Resource estimate and economic study
- Facility on care and maintenance

