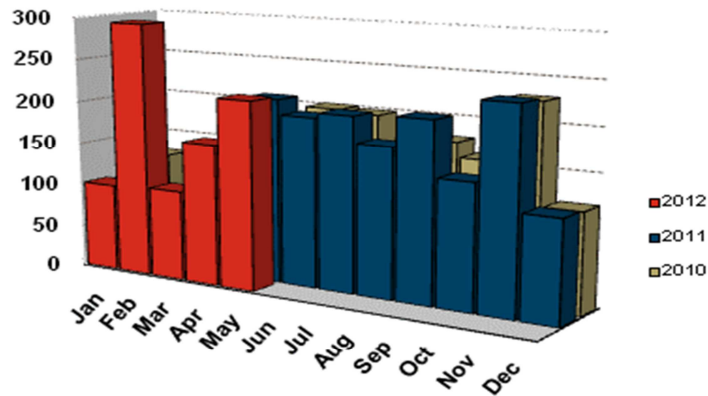


Oshawa CMA Home Starts



Source: CMHC

MAY HOUSING STARTS											
	SINGLE		SEMI		TH		APT		TOTAL		% CHG
	2011	2012	2011	2012	2011	2012	2011	2012	2011	2012	
Whitby	42	14	0	0	32	51	0	0	74	65	-12.2
Oshawa City	34	28	4	0	29	0	0	0	67	28	-58.2
Clarington	57	125	0	0	16	0	0	0	73	125	71.2
<b>OSHAWA CMA</b>	<b>133</b>	<b>167</b>	<b>4</b>	<b>0</b>	<b>77</b>	<b>51</b>	<b>0</b>	<b>0</b>	<b>214</b>	<b>218</b>	<b>1.9</b>
Pickering	1	78	0	0	3	16	0	0	4	94	**
Ajax	42	13	6	0	40	17	0	0	88	30	-65.9
Uxbridge	0	2	0	0	0	0	0	0	0	2	NA
Brock	0	0	0	0	0	0	0	0	0	0	NA
Scugog	3	2	0	0	0	0	0	0	3	2	-33.3
<b>DURHAM REGION</b>	<b>179</b>	<b>262</b>	<b>10</b>	<b>0</b>	<b>120</b>	<b>84</b>	<b>0</b>	<b>0</b>	<b>309</b>	<b>346</b>	<b>12.0</b>

JANUARY-MAY HOUSING STARTS											
	SINGLE		SEMI		TH		APT		TOTAL		% CHG
	2011	2012	2011	2012	2011	2012	2011	2012	2011	2012	
Whitby	136	105	0	0	32	96	0	211	168	412	145.2
Oshawa City	129	78	38	0	44	0	16	0	227	78	-65.6
Clarington	163	284	0	6	28	23	0	82	191	395	106.8
<b>OSHAWA CMA</b>	<b>428</b>	<b>467</b>	<b>38</b>	<b>6</b>	<b>104</b>	<b>119</b>	<b>16</b>	<b>293</b>	<b>586</b>	<b>885</b>	<b>51.0</b>
Pickering	27	144	0	0	3	24	235	0	265	168	-36.6
Ajax	133	137	10	28	92	54	0	0	235	219	-6.8
Uxbridge	7	27	0	0	0	0	0	0	7	27	**
Brock	3	0	0	0	0	0	0	0	3	0	-100.0
Scugog	6	3	0	0	0	0	0	0	6	3	-50.0
<b>DURHAM REGION</b>	<b>604</b>	<b>778</b>	<b>48</b>	<b>34</b>	<b>199</b>	<b>197</b>	<b>251</b>	<b>293</b>	<b>1,102</b>	<b>1,302</b>	<b>18.1</b>

Source: CMHC