

*Figure 1 – Schematic overview of exploration potential for the Midwest Northeast property. Drill holes completed to date for the summer 2010 program are shown. Base map is vertical gradient high resolution airborne magnetics.*

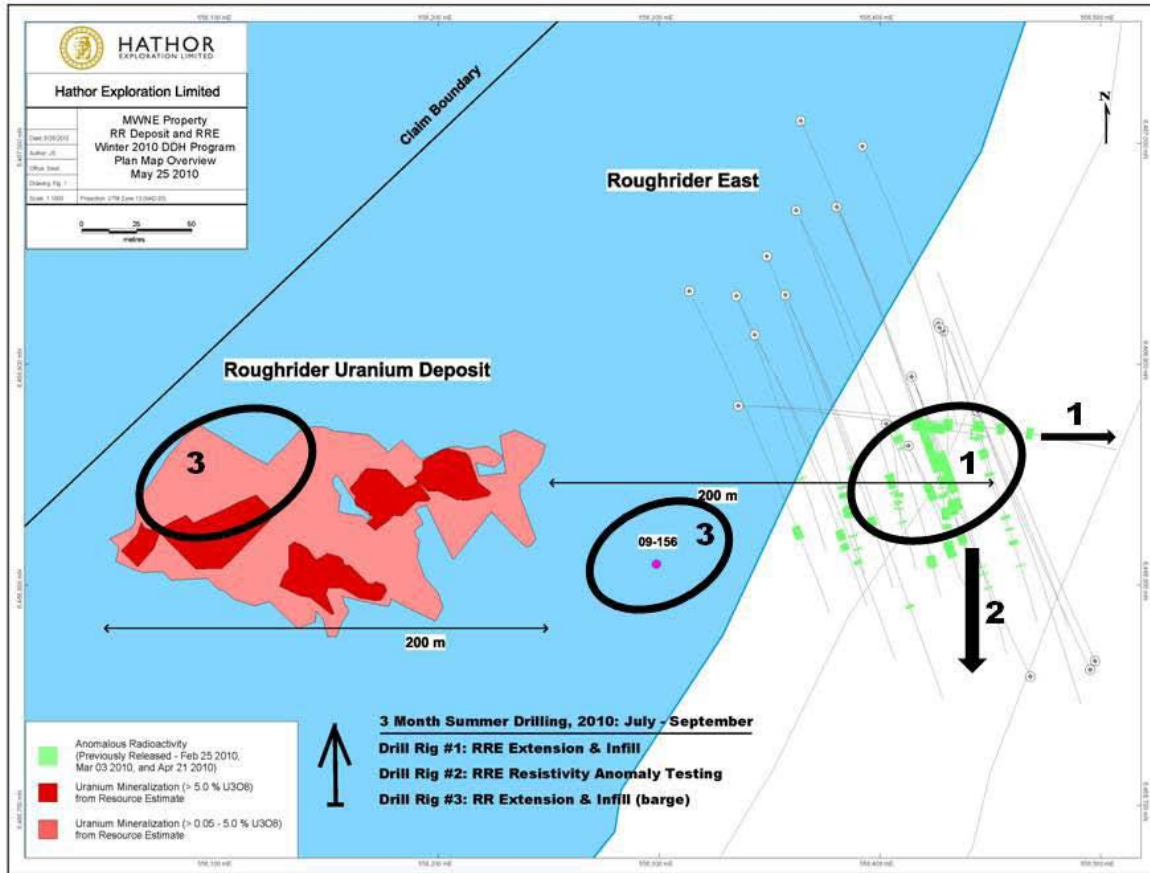


Figure 2 – Map showing original targets and drill plan for the 2010 summer program at Midwest Northeast Property.

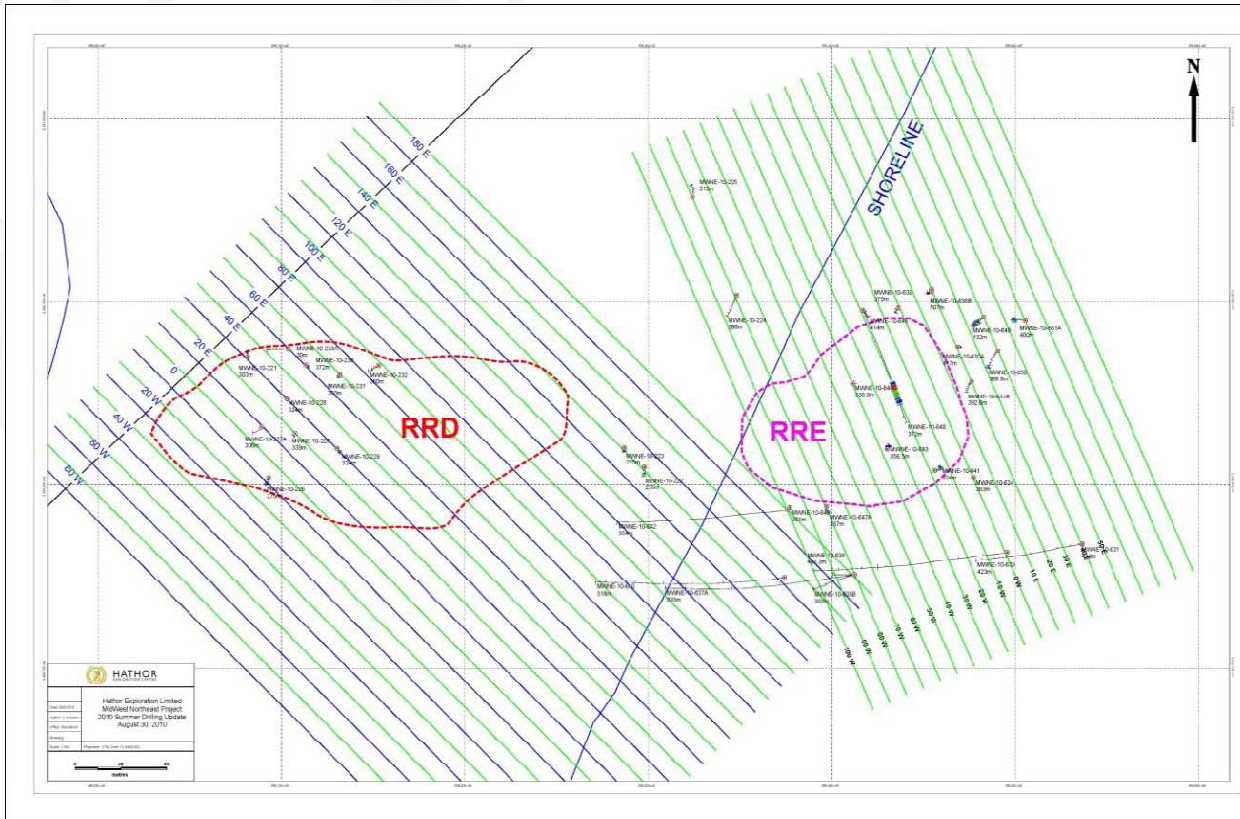


Figure 3 – Location of drill holes completed to date on the Midwest Northeast property.

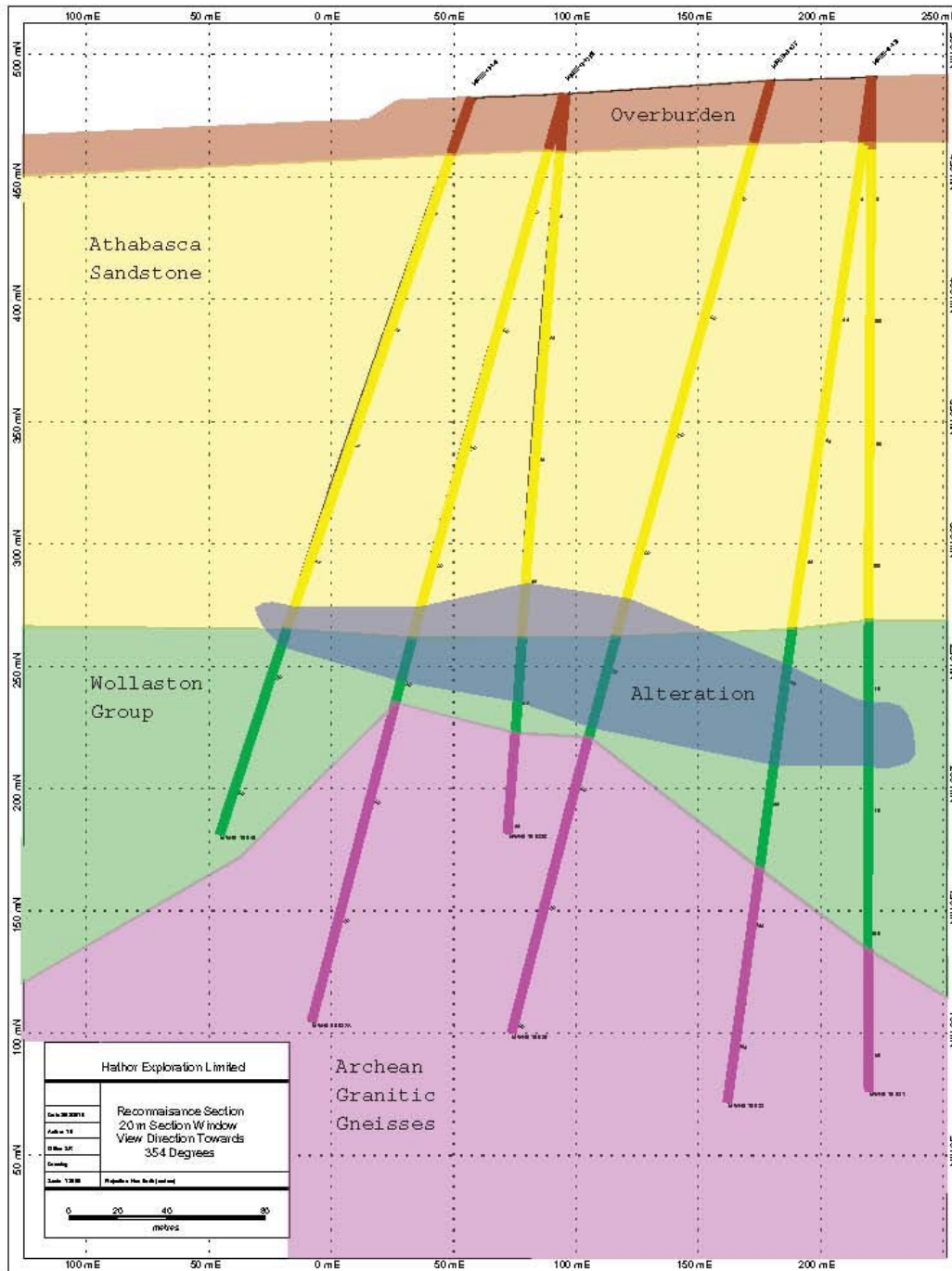
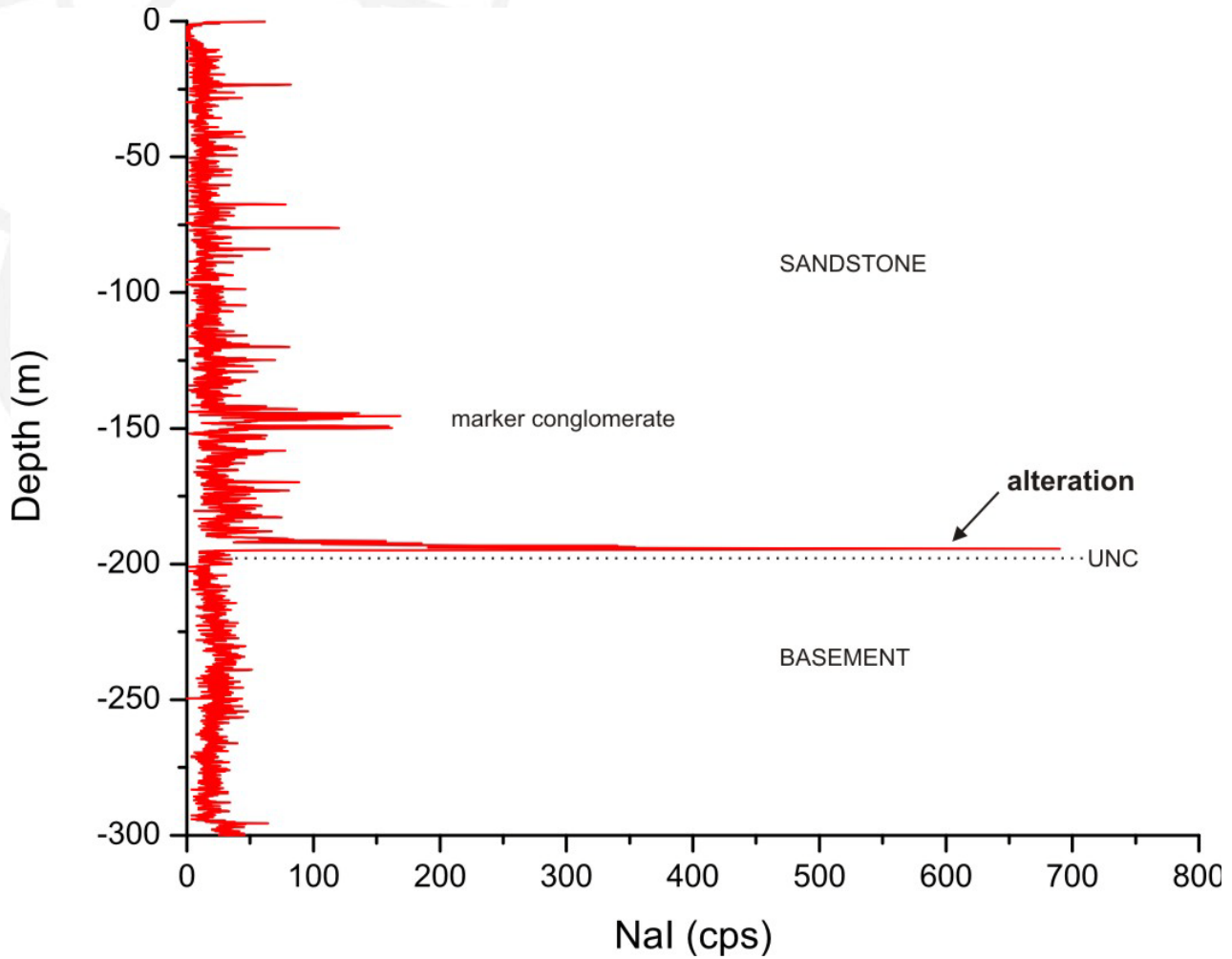


Figure 4 – Cross section view, looking north, across the large resistivity anomaly extending southwest along the Midwest Trend from Roughrider East.



*Figure 5 - Radioactivity in drill hole MWNE-10-225, located 100 m to the northeast of the Roughrider deposit, on the extension of the same magnetic anomaly.*



Figure 1: Drill core photograph of MWNE-10-225 from 189.8 to 201 m, showing clay alteration before split sampling (A) and after split sampling (B).

*Photo 1 – Clay and hematite alteration in drill hole MWNE-10-225, located 100 m to the northeast of the Roughrider deposit, on the extension of the same magnetic anomaly.*