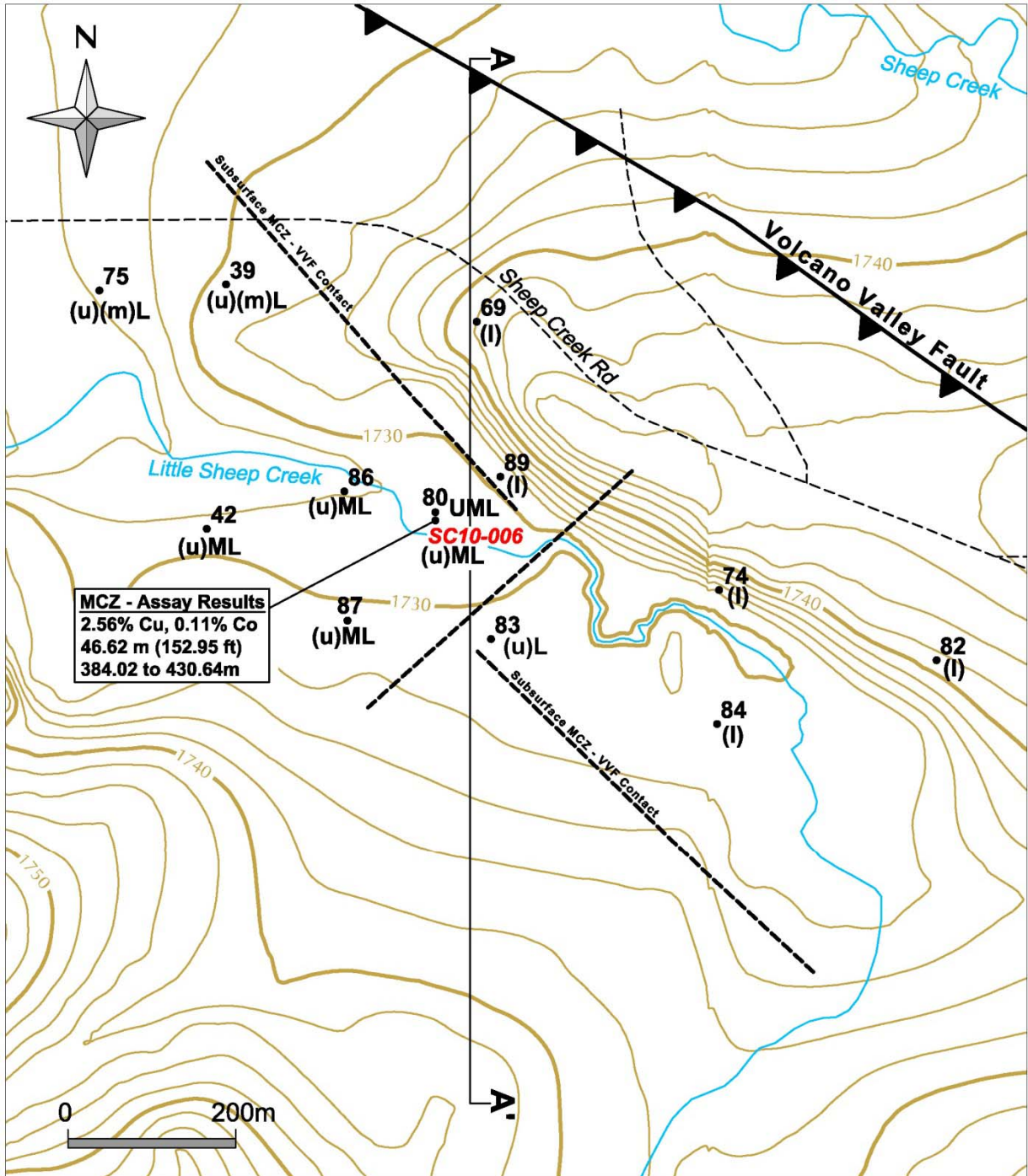


Figure 2
Historic drill pattern and new drilling
Strawberry East area, Sheep Creek, Montana



MCZ - Assay Results
 2.56% Cu, 0.11% Co
 46.62 m (152.95 ft)
 384.02 to 430.64m

Legend

- | | |
|------------------------|---------------------------|
| U - Upper Copper Zone | (u) - Upper Sulfide Zone |
| M - Middle Copper Zone | (m) - Middle Sulfide Zone |
| L - Lower Copper Zone | (l) - Lower Sulfide Zone |