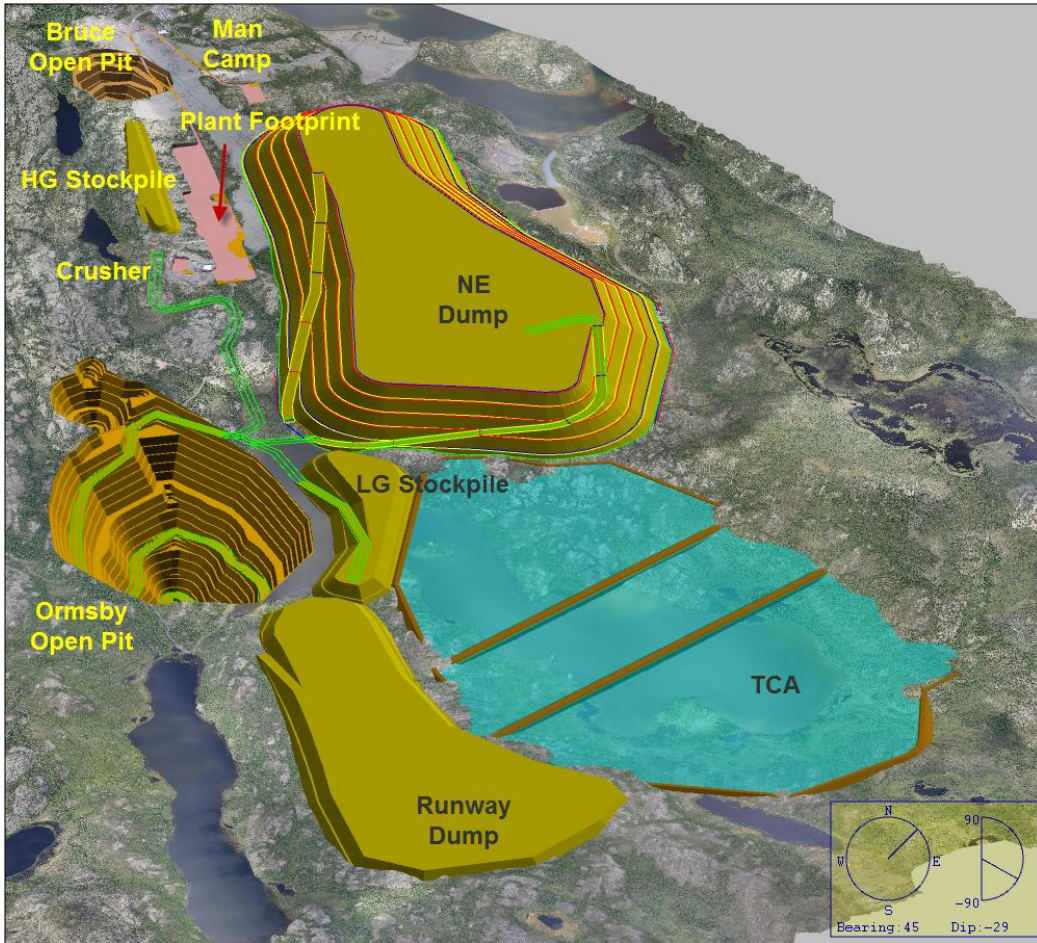
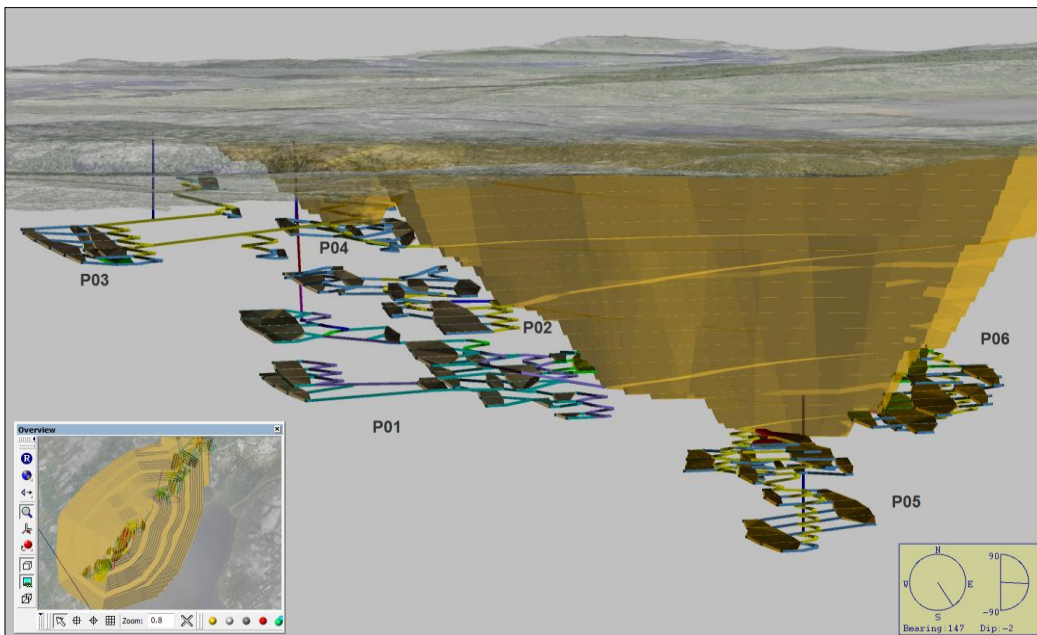


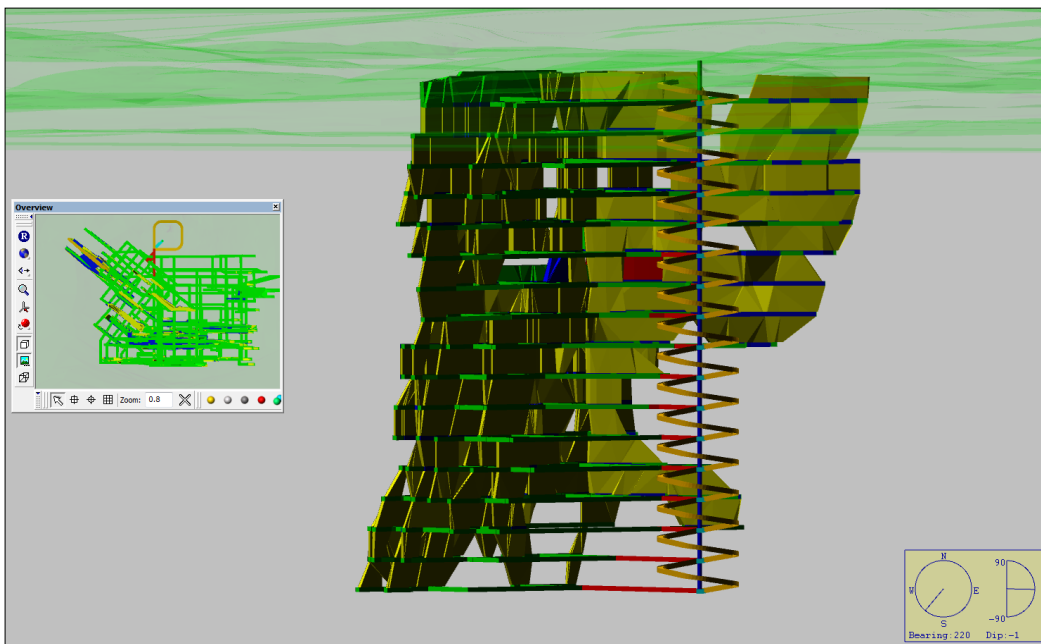
**Ormsby Surface Mine Schematic:**



**Ormsby Underground Schematic:**



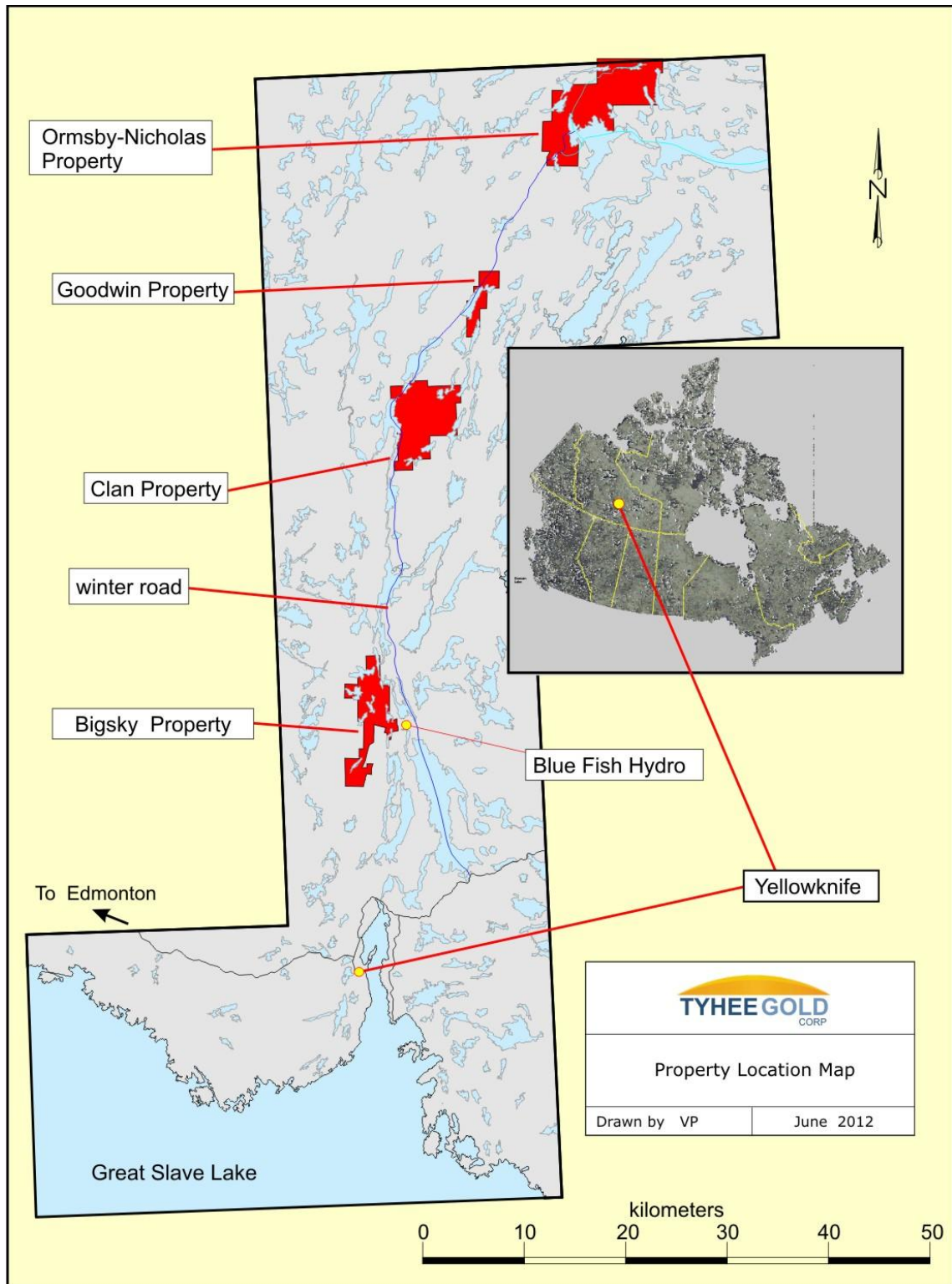
## Nicholas Lake Schematic:



## Mill Production:

Mill Feed Schedule	Description	Unit	Total	2015	2016	2017	2018	2019	2020	2021	2022	2023	2024	2025	2026	2027	2028	2029	
<b>RoM to Mill</b>																			
	Open Pit Ore	kt	17,633	391	1,429	1,295	1,289	1,300	1,282	1,281	1,257	1,204	1,084	1,126	1,269	1,385	1,304	738	
	Underground Ore	kt	2,801	0	31	165	171	160	178	179	203	256	376	334	191	75	156	325	
	<b>Total RoM</b>	<b>kt</b>	<b>20,434</b>	<b>391</b>	<b>1,460</b>	<b>1,460</b>	<b>1,460</b>	<b>1,460</b>	<b>1,460</b>	<b>1,460</b>	<b>1,460</b>	<b>1,460</b>	<b>1,460</b>	<b>1,460</b>	<b>1,460</b>	<b>1,460</b>	<b>1,460</b>	<b>1,063</b>	
<b>Grade</b>																			
	Open Pit	g/t	1.84	3.71	2.4	2.43	2.37	3.06	2.27	1.6	1.65	3.02	1.35	0.94	1.01	0.88	0.89	0.69	
	Underground	g/t	3.23		2.99	4.37	3.26	2.84	2.69	3.33	3.16	3.34	3.13	2.8	2.95	4.44	3.01	3.63	
	<b>Average Grade</b>	<b>g/t</b>	<b>2.03</b>	<b>3.71</b>	<b>2.41</b>	<b>2.65</b>	<b>2.47</b>	<b>3.03</b>	<b>2.32</b>	<b>1.81</b>	<b>1.86</b>	<b>3.08</b>	<b>1.81</b>	<b>1.36</b>	<b>1.26</b>	<b>1.06</b>	<b>1.12</b>	<b>1.59</b>	
	<b>Total Gold</b>	<b>koz</b>	<b>1,334</b>	<b>47</b>	<b>113</b>	<b>125</b>	<b>116</b>	<b>142</b>	<b>109</b>	<b>85</b>	<b>87</b>	<b>145</b>	<b>85</b>	<b>64</b>	<b>59</b>	<b>50</b>	<b>53</b>	<b>54</b>	
<b>Gold Produced</b>																			
	Average Recovery	%	90.50%	92.00%	91.70%	90.10%	90.50%	91.00%	90.60%	89.70%	89.60%	90.10%	88.70%	87.80%	90.60%	92.00%	92.00%	92.00%	
	<b>Gold Produced</b>	<b>koz</b>	<b>1,207</b>	<b>43</b>	<b>104</b>	<b>112</b>	<b>105</b>	<b>130</b>	<b>99</b>	<b>76</b>	<b>78</b>	<b>130</b>	<b>75</b>	<b>56</b>	<b>54</b>	<b>46</b>	<b>48</b>	<b>50</b>	
<b>Tailings</b>																			
	Tailings Produced	kt	20,396	389	1,457	1,457	1,457	1,456	1,457	1,458	1,458	1,456	1,458	1,458	1,458	1,458	1,458	1,458	1,061
	Gold Grade	g/t	0.19	0.3	0.2	0.26	0.24	0.27	0.22	0.19	0.19	0.31	0.21	0.17	0.12	0.09	0.09	0.13	

**Project Location Map:**



# Timeline Targets:

