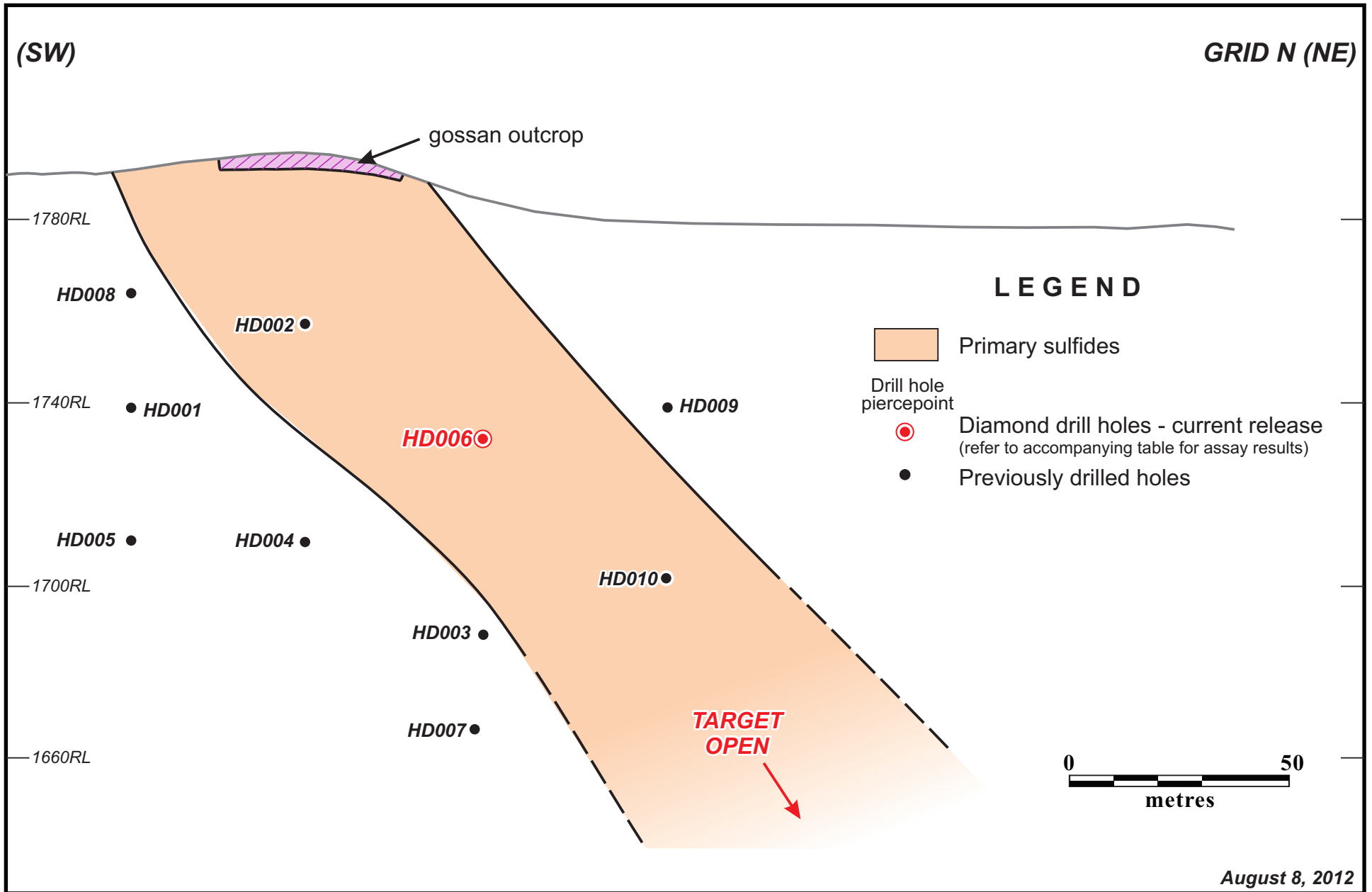


Hole ID		From (m)	To (m)	Interval (m)	Copper %	Gold g/t	Silver g/t	Zinc %	Local Azimuth	Dip	Prospect
09HTD001		39.00	42.00	3.00	3.75	0.39	11	0.01	260	-75	Terakimti
09HTD002		42.00	54.00	12.00	1.06	0.88	24	4.11	275	-65	Terakimti
		75.00	92.00	17.00	0.33	0.38	10	1.10			
09HTD003		17.00	22.00	5.00	0.61	0.70	41	1.51	275	-75	Terakimti
		41.00	52.20	11.20	0.34	0.37	3	0.15			
09HTD004		69.00	76.00	7.00	0.30	0.37	11	4.21	275	-70	Terakimti
09HTD005		66.30	69.90	3.60	3.05	1.58	30	1.68	260	-75	Terakimti
		77.00	90.90	13.90	2.67	1.17	22	3.42			
10HTD001		71.70	79.30	7.60	2.07	4.01	36	2.59	275	-70	Terakimti
		85.30	93.80	8.50	0.41	0.32	5	0.59			
10HTD002		28.80	42.00	13.20	0.16	2.84	300	0.02	275	-65	Terakimti
10HTD003		45.60	97.70	52.10	4.10	1.55	26	0.13	261	-76	Terakimti
	including	54.20	93.70	39.50	5.35	1.74	21	0.15			
10HTD004		No Significant Results							276.5	-65	Terakimti
10HTD005		164.60	167.80	3.20	0.83	1.57	8	5.02	275	-65	Terakimti
10HTD006		149.20	154.00	4.80	0.32	0.35	13	2.43	260	-65	Terakimti
10HTD007		No Significant Results							260	-75	Terakimti
TD001		44.00	46.00	2.00	1.63	1.41	23	1.70	270	-60	Terakimti
		53.30	55.40	2.10	2.80	1.09	12	0.19			
		90.15	95.75	5.60	1.11	0.54	17	4.96			
		138.40	140.00	1.60	2.89	2.54	16	0.99			
		148.00	152.20	4.20	1.51	0.43	5	0.03			
TD002		106.00	110.25	4.25	0.12	0.26	6	4.70	270	-69	Terakimti
TD003		104.80	106.10	1.30	1.95	3.42	23	0.08	270	-60	Terakimti
		135.75	142.90	7.15	0.29	0.20	2	0.06			
TD004		57.45	131.30	73.85	3.77	1.31	14	0.72	270	-60	Terakimti
	including	78.65	115.10	36.45	6.01	1.69	19	1.31			
		162.50	163.75	1.25	0.68	0.73	15	4.76			
TD005		71.40	90.10	18.70	2.12	0.96	18	3.58	270	-60	Terakimti
	including	77.60	90.10	12.50	3.04	1.24	24	4.55			
TD006		99.00	102.50	3.50	0.99	0.62	8	0.16	269.5	-74.5	Terakimti
		111.00	113.75	2.75	0.40	1.06	14	0.19			
		129.50	131.45	1.95	1.18	2.59	25	2.79			
TD007		0.00	22.50	22.50	0.05	1.48	2	0.07	270	-60	Terakimti
	including	6.30	21.50	15.20	0.05	1.99	3	0.06			
		31.20	49.40	18.20	0.36	1.33	6	0.00			
	including	42.85	49.40	6.55	0.78	2.83	0	0.00			
	including	44.50	48.70	4.20	0.85	4.32	0	0.00			
TD008		38.75	59.60	20.85	5.67	1.48	18	0.77	270	-60	Terakimti
	including	40.70	54.45	13.75	7.49	2.06	24	1.09			
TD009		82.50	84.40	1.90	0.94	0.26	4	0.03	270	-60	Terakimti
TD010		56.00	70.75	14.75	0.17	1.29	37	0.00	270	-63	Terakimti
	including	56.00	62.85	6.85	0.03	1.84	71	0.00			
TD011		181.75	196.95	15.20	2.61	2.53	43	6.77	270	-90	Terakimti
	including	181.75	193.45	11.70	3.26	3.10	53	8.38			
		220.10	224.25	4.15	1.82	1.53	29	1.06			
		229.70	232.10	2.40	1.36	1.02	15	2.00			
TD012		40.28	44.75	4.47	0.03	4.26	77	0.02	270	-71	Terakimti
TD013		14.10	23.60	9.50	0.09	3.40	3	0.05	270	-60	Terakimti
TD014		57.45	94.45	37.00	3.53	1.21	26	1.32	270	-65	Terakimti
	including	57.45	80.50	23.05	5.17	1.59	39	2.01			
TD015		40.25	43.75	3.50	0.02	1.26	23	0.02			Terakimti
TD016		80.40	98.15	17.75	2.98	1.61	20	0.03	270	-45	Terakimti
TD017		54.85	63.95	9.10	0.24	1.40	65	0.03	270	-60	Terakimti
		80.00	82.90	2.90	1.59	1.14	8	0.07			
		121.30	141.70	20.40	0.13	0.30	7	1.63			
	including	138.40	141.70	3.30	0.29	0.62	14	4.89			
TD018		85.90	89.90	4.00	0.04	0.06	0	2.42	270	-58	Terakimti
		93.90	96.00	2.10	3.58	1.22	20	2.04			
		124.05	154.80	30.75	2.55	0.99	9	1.52			
	including	124.05	130.75	6.70	1.09	0.45	3	0.12			
	and including	135.63	154.80	19.17	3.68	1.40	13	2.37			
	including	138.89	154.80	15.91	4.07	1.35	13	2.83			
TD019		160.00	161.40	1.40	0.64	1.04	13	0.42	270	-60	Terakimti
TD020		38.00	39.20	1.20	0.00	1.10	7	0.00	270	-60	Terakimti
TD021		47.95	65.95	18.00	0.59	0.02	0	0.43	270	-70	Terakimti
		139.20	152.00	12.80	0.29	0.70	6	0.34			
	including	146.90	152.00	5.10	0.42	1.11	9	0.39			
		250.00	252.00	2.00	0.28	0.40	13	3.63			
TD022		87.35	116.30	28.95	2.99	0.83	23	3.56	270	-51	Terakimti
	including	87.35	94.65	7.30	3.55	1.05	31	6.43			
	including	100.80	115.45	14.65	4.05	1.05	28	3.52			
		199.50	209.50	10.00	0.22	0.73	9	2.23			
	including	204.00	209.50	5.50	0.29	0.74	10	3.11			

Hole ID		From (m)	To (m)	Interval (m)	Copper %	Gold g/t	Silver g/t	Zinc %	Local Azimuth	Dip	Prospect
TD023		51.20	63.20	12.00	0.01	2.18	68	0.00	270	-60	Terakimti
	including	51.20	55.20	4.00	0.01	5.48	157	0.01			
TD024	No Significant Results								270	-60	Terakimti
TD025		74.70	80.50	5.80	3.54	1.27	24	0.74	270	-58	Terakimti
		93.85	125.60	31.75	1.84	0.83	17	7.03			
	including	106.50	123.20	16.70	2.37	0.89	19	9.16			
	and including	110.50	122.40	11.90	3.08	1.06	20	9.54			
TD026		98.80	102.40	3.60	0.91	1.01	28	4.34	267	-70	Terakimti
TD027		55.95	66.80	10.85	1.26	1.21	13	0.02	270	-63	Terakimti
	including	55.95	57.80	1.85	4.56	1.71	34	0.04			
		81.10	88.90	7.80	0.93	0.77	6	0.02			
	including	81.10	84.90	3.80	1.19	1.32	10	0.03			
TD028		29.35	34.25	4.90	0.91	0.61	4	0.10	270	-60	Terakimti
	including	32.15	34.25	2.10	2.09	0.62	3	0.24			
TD029		36.45	45.25	8.80	0.01	9.19	78	0.00	270	-60	Terakimti
	including	38.30	41.90	3.60	0.01	21.88	168	0.00			
		55.75	62.80	7.05	1.32	0.00	0	0.38			
TD030		7.20	17.70	10.50	0.08	6.30	16	0.05	274	-60	Terakimti
TD031		21.80	23.60	1.80	0.03	0.82	0	0.00	270	-60	Terakimti
TD032		4.70	8.00	3.30	0.09	1.08	20	0.02	270	-60	Terakimti
TD033		24.00	27.10	3.10	0.04	0.74	34	7.97	270	-60	Terakimti
TD034		0.00	29.00	29.00	0.14	3.40	11	0.08	270	-61	Terakimti
	including	20.20	29.00	8.80	0.29	8.77	34	0.12			
TD035		52.00	59.80	7.80	3.31	1.45	9	1.46	270	-55	Terakimti
		70.80	77.50	6.70	1.61	2.32	10	0.49			
TD036		17.10	25.75	8.65	0.21	2.18	6	0.07	270	-80	Terakimti
		81.40	89.10	7.70	2.32	1.23	21	2.71			
		220.10	228.00	7.90	0.19	0.39	9	4.70			
		256.55	263.60	7.05	0.34	0.72	13	5.01			
TD037		53.15	69.85	16.70	1.23	2.37	36	8.07	270	-75	Terakimti
	including	59.80	66.70	6.90	1.08	3.86	57	15.39			
TD038		14.50	20.00	5.50	0.02	5.94	9	0.02	264	-55	Terakimti
		49.80	52.80	3.00	0.75	0.42	11	0.01			
TD039		86.15	105.90	19.75	2.39	1.81	13	1.99	269.5	-60	Terakimti
		114.70	115.40	0.70	1.57	3.61	9	0.60			
TD040		58.70	61.20	2.50	1.22	1.13	21	0.24	267.5	-60	Terakimti
		83.60	98.50	14.90	0.18	0.67	15	3.92			
		215.00	242.70	27.70	0.26	0.50	7	4.39			
	including	239.20	242.70	3.50	1.41	2.09	31	23.00			
TD041		28.50	31.65	3.15	0.02	5.32	9	0.00	270	-60	Terakimti
		50.90	54.35	3.45	0.55	0.02	0	0.01			
TD042		82.10	83.20	1.10	0.11	0.48	6	5.75	270	-60	Terakimti
TD043		147.70	195.50	47.80	1.01	0.70	6	0.72	270	-61	Terakimti
		174.20	191.65	17.45	2.15	1.11	10	0.42			
	including	174.95	186.10	11.15	3.05	1.28	14	0.56			
TD044		0.00	33.95	33.95	0.06	1.34	2	0.03	270	-60	Terakimti
	including	17.20	30.60	13.40	0.10	2.70	2	0.03			
TD045		140.00	146.30	6.30	0.53	0.20	2	0.06	270	-70	Terakimti
TD046	No Significant Results								270	-56	Terakimti
TD047		0.00	4.90	4.90	0.14	0.43	0	0.07	270	-60	Terakimti
TD048		81.85	87.35	5.50	1.51	0.83	31	13.26	270	-60	Terakimti
TD049		38.90	58.00	19.10	0.01	0.57	42	0.00	270	-60.5	Terakimti
TD050		169.35	173.00	3.65	0.02	0.78	1	0.09	270	-76.1	Terakimti
TD051		211.55	225.75	14.20	0.55	0.77	13	0.32	270	-67	Terakimti
		233.35	263.30	29.95	1.29	1.09	19	1.87			
	including	242.95	256.25	13.30	2.52	1.98	36	3.48			
TD052	No significant intercepts								270	-73	Terakimti
TD053		10.88	17.00	6.12	0.19	27.17	13	0.08	270	-60	Terakimti
TD054		0.00	4.95	4.95	0.11	1.94	0	0.04	270	-60	Terakimti
		27.65	33.05	5.40	2.26	1.72	20	1.46			
TD055		98.50	104.65	6.15	1.37	0.29	5	0.30	270	-45	Terakimti
TD056		77.65	80.45	2.80	2.60	1.26	19	3.46	270	-60	Terakimti
		90.45	104.35	13.90	1.87	0.97	18	3.55			
	including	90.45	97.93	7.48	2.87	1.19	24	2.98			
TD057		140.90	143.70	2.80	2.12	3.00	33	0.72	270	-60	Terakimti
		148.80	153.85	5.05	2.97	2.77	20	2.36			
TD058		134.70	136.10	1.40	0.01	1.01	30	9.27	270	-73	Terakimti
		144.80	147.45	2.65	0.45	4.33	58	10.00			
		158.95	161.35	2.40	0.06	2.50	33	3.13			
	including	173.95	188.70	14.75	0.44	0.94	17	0.84			
TD059		56.00	67.05	11.05	0.08	0.18	2	0.70	270	-60	Terakimti
TD060		99.15	107.45	8.30	1.32	0.45	19	2.41	270	-60	Terakimti
	including	104.90	107.45	2.55	3.25	1.05	47	4.60			

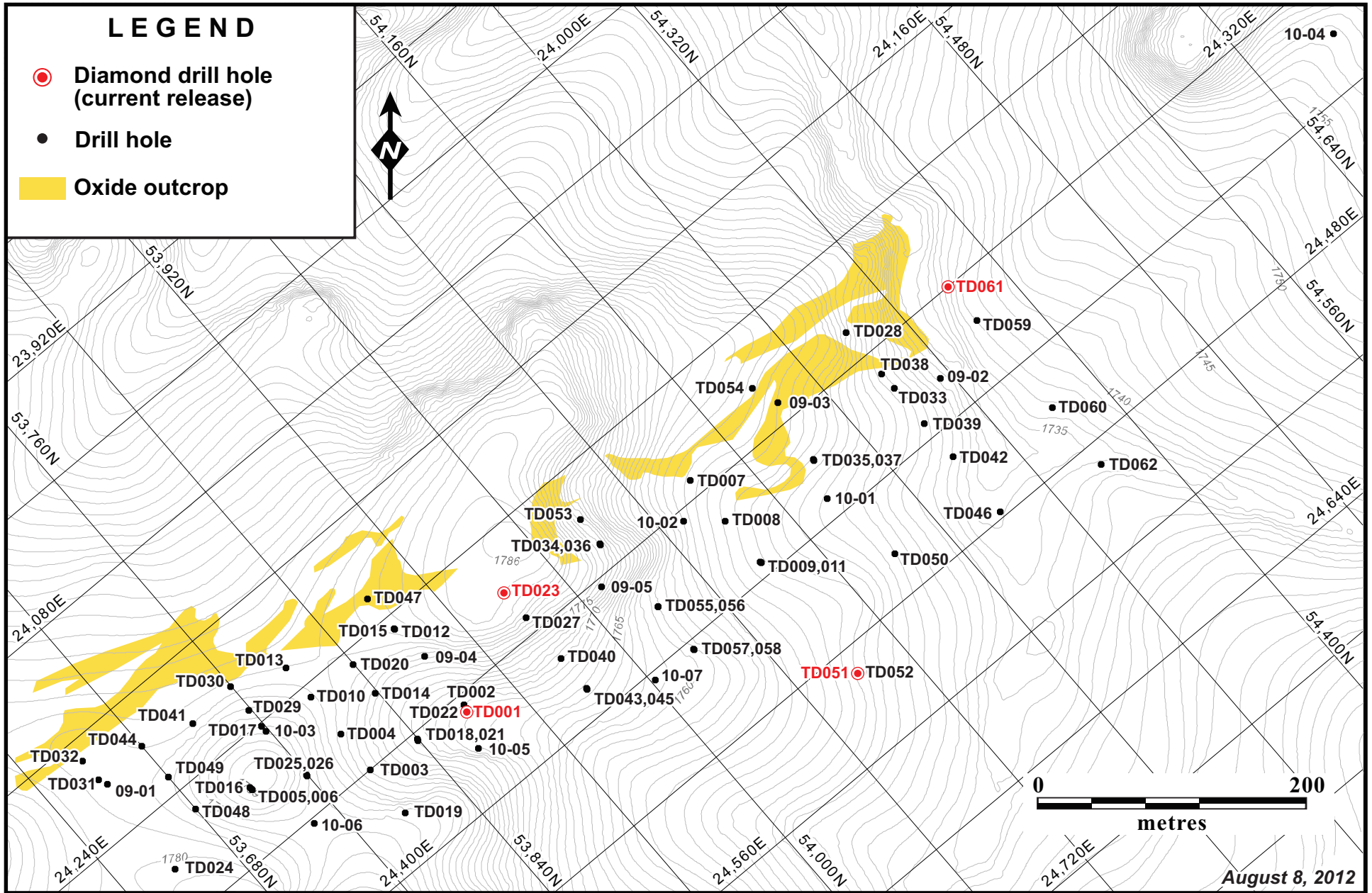
Hole ID		From (m)	To (m)	Interval (m)	Copper %	Gold g/t	Silver g/t	Zinc %	Local Azimuth	Dip	Prospect	
TD061		45.25	47.35	2.10	1.34	0.34	7	0.01	270	-57	Terakimti	
TD062		No Significant Results								275	-60	Terakimti
HD001		54.60	58.70	4.10	0.84	0.24	5	2.64	90	-60	Mayshehagne	
HD002		24.00	44.70	20.70	4.97	1.10	31	8.24	90	-60.8	Mayshehagne	
	including	28.75	41.55	12.80	7.72	1.73	50	12.72				
HD003		No Significant Results								90	-60	Mayshehagne
HD004		84.50	85.10	0.60	0.22	0.44	16	5.56	90	-60.5	Mayshehagne	
		101.10	104.10	3.00	0.17	0.28	4	1.99				
HD005		No Significant Results								90	-60.5	Mayshehagne
HD006		62.00	80.00	18.00	3.23	0.95	22	3.86	90	-45	Mayshehagne	
	including	62.00	67.45	5.45	7.05	1.24	46	6.53				
HD007		No Significant Results								95	-75	Mayshehagne
HD009		No Significant Results								95	-60	Mayshehagne
HD010		89.55	93.25	3.70	1.79	2.07	13	3.01	90	-60	Mayshehagne	
		99.00	99.80	0.80	1.96	0.48	21	5.94				
09HND001		71.93	74.93	3.00	0.68	1.13	5	0.12	261.5	-70	Nefasit	
09HND002		138.65	139.75	1.10	0.32	0.06	2	0.02	86.5	-65	Nefasit	
09HND003		59.10	60.10	1.00	0.39	0.08	4	0.02	261.5	-80	Nefasit	
09HND004		52.15	55.15	3.00	2.34	1.41	23	0.09	261.5	-65	Nefasit	
09HND005		No Significant Results								261.5	-80	Nefasit



Mayshehagne VMS Prospect
 Hamlo Concession
Harvest Project, Ethiopia

Long Section
 (looking NW)

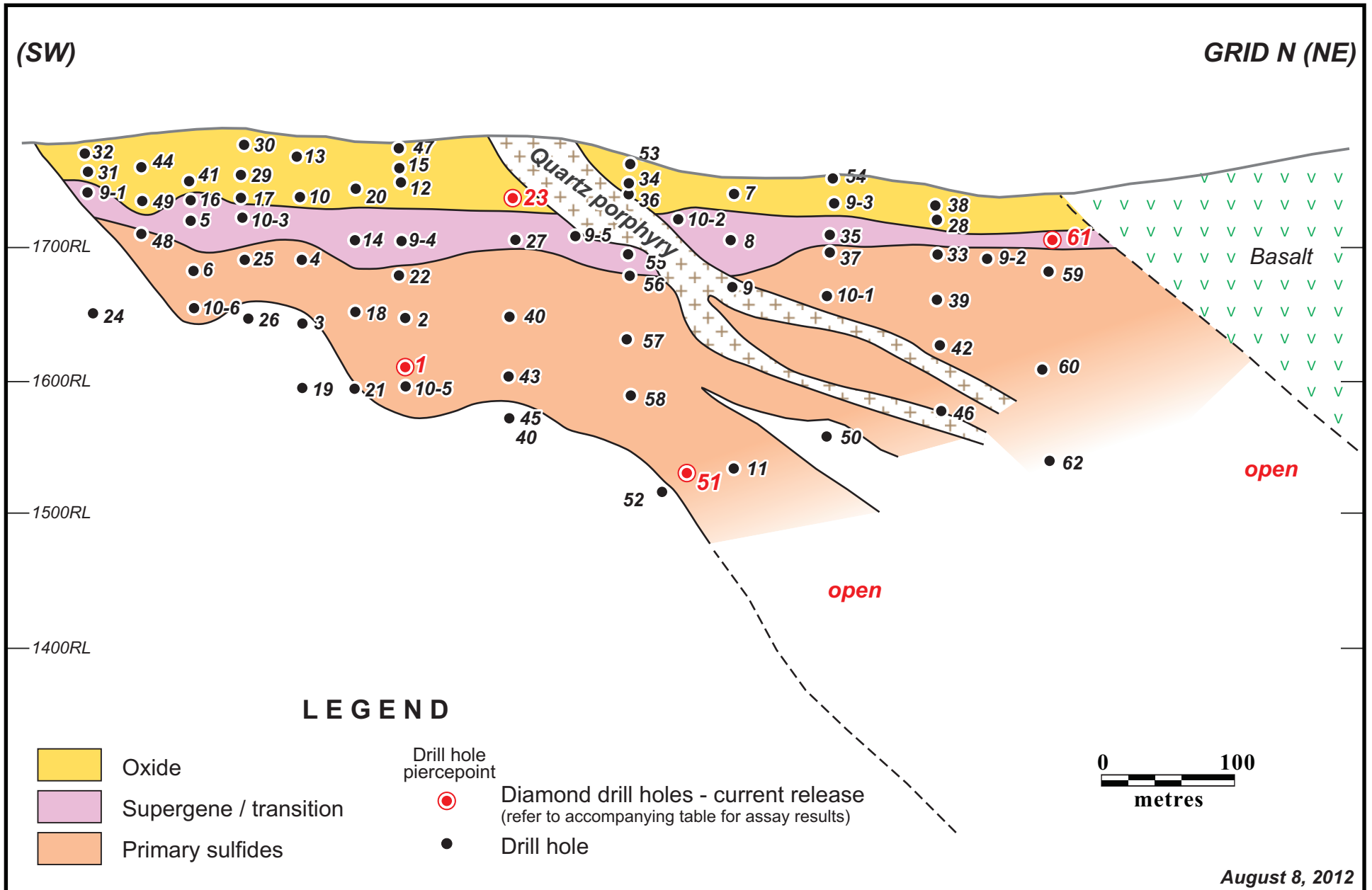




Terakimti VMS Prospect
 Terakimti Concession
Harvest Project, Ethiopia

Drill Plan

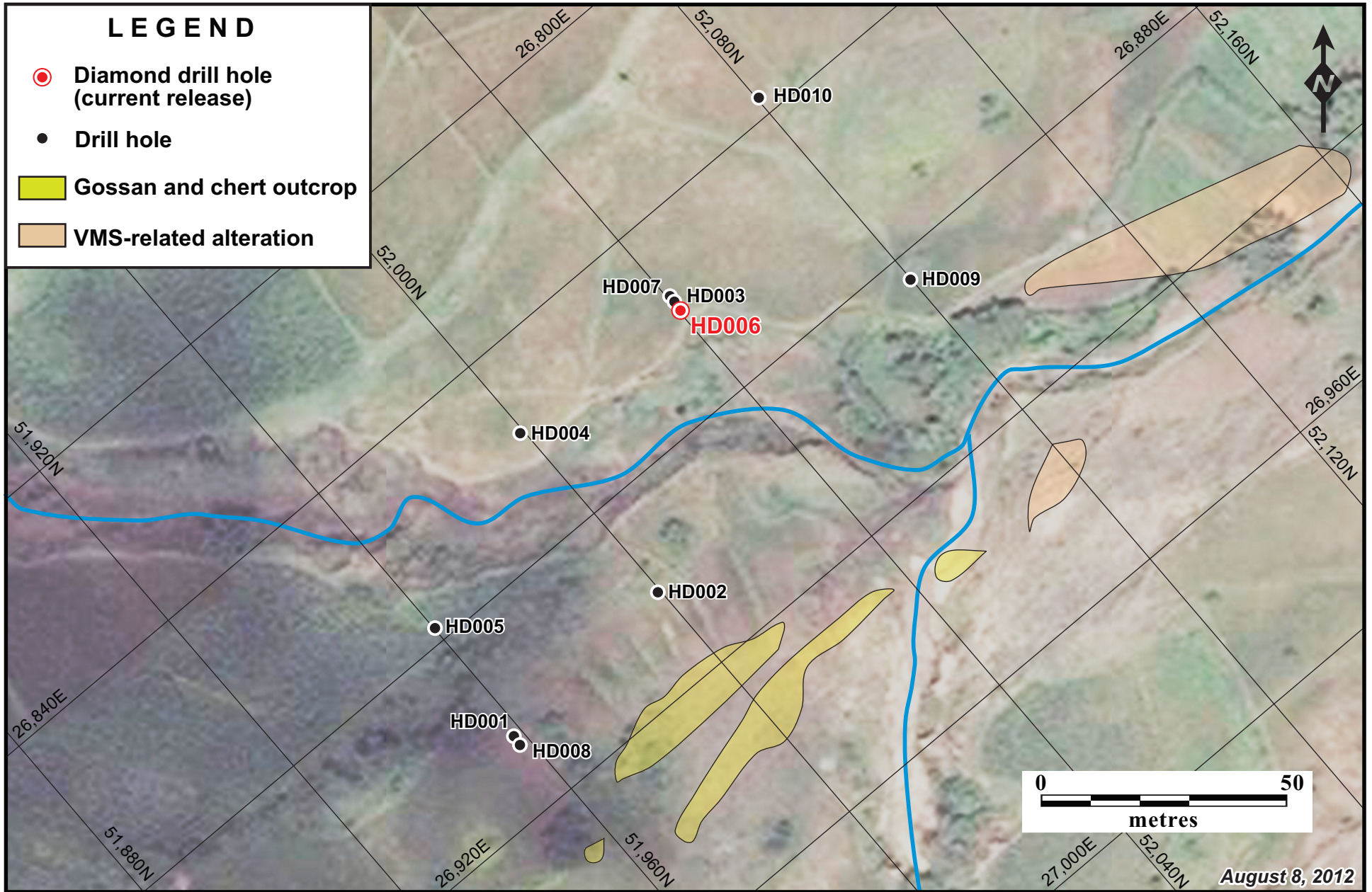




Terakimti VMS Prospect
 Terakimti Concession
Harvest Project, Ethiopia

Long Section
 (looking NW)





Mayshehagne VMS Prospect
 Hamlo Concession
Harvest Project, Ethiopia

Drill Plan

