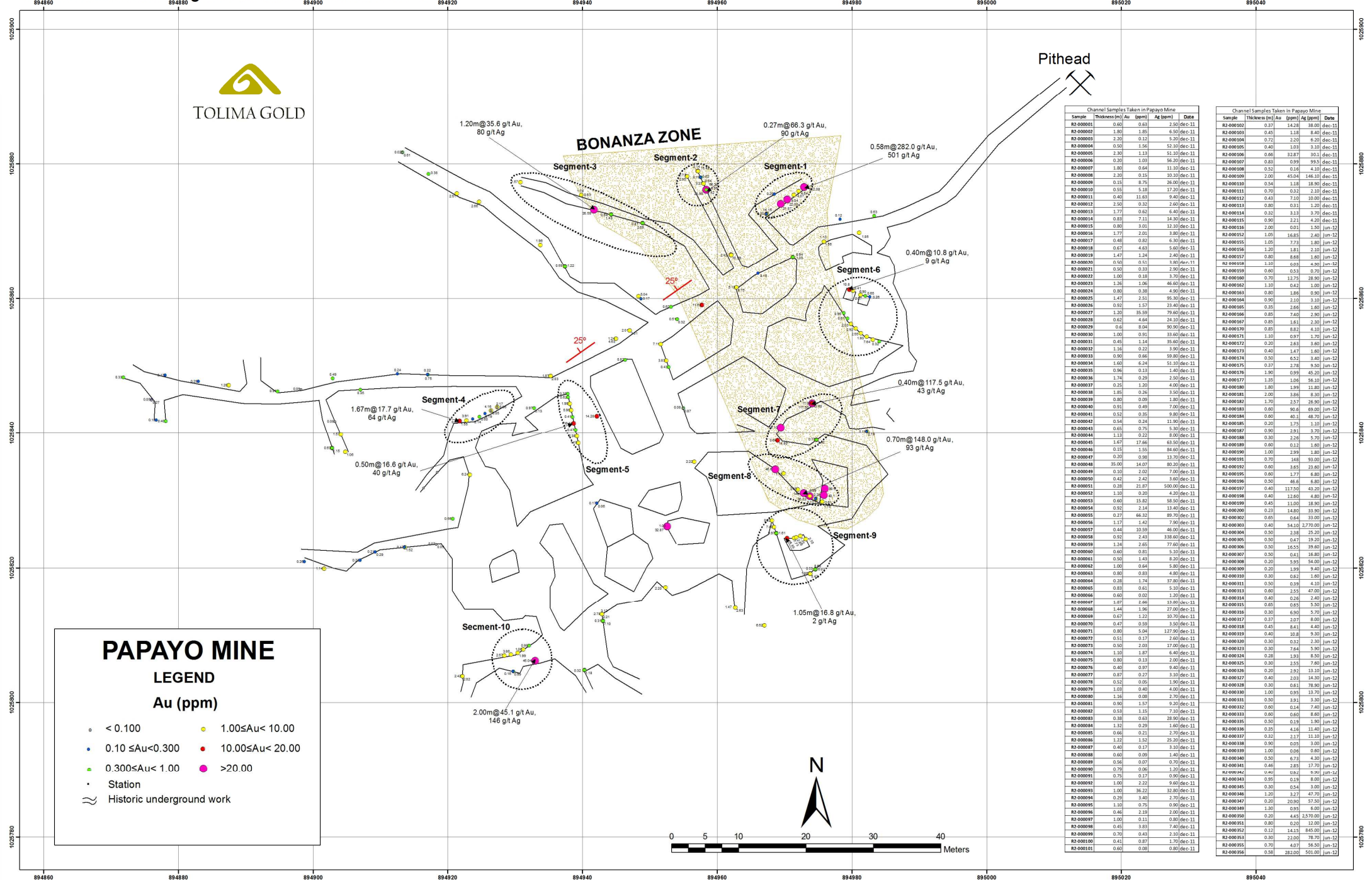


**Figure 1: Plan view of the El Papayo mine showing drift and underground cross-cuts sampling colour-coded for gold grades, data from highest grade gold samples for some selected segments and the "Bonanza Zone".**



**PAPAYO MINE**

**LEGEND**

**Au (ppm)**

- < 0.100
- 0.10 ≤ Au < 0.300
- 0.300 ≤ Au < 1.00
- 1.00 ≤ Au < 10.00
- 10.00 ≤ Au < 20.00
- > 20.00
- Station
- Historic underground work

Channel Samples Taken in Papayo Mine

Sample	Thickness (m)	Au (ppm)	Ag (ppm)	Date
R2-00001	0.96	0.61	2.50	dec-11
R2-00002	1.80	1.85	6.50	dec-11
R2-00003	2.20	0.12	5.20	dec-11
R2-00004	0.50	1.50	51.10	dec-11
R2-00005	2.30	1.13	51.10	dec-11
R2-00006	2.00	1.03	56.20	dec-11
R2-00007	1.80	0.64	11.10	dec-11
R2-00008	2.20	0.35	10.10	dec-11
R2-00009	0.15	8.75	26.00	dec-11
R2-00010	0.55	5.18	17.20	dec-11
R2-00011	0.40	11.60	9.40	dec-11
R2-00012	2.90	0.32	2.60	dec-11
R2-00013	1.77	0.62	6.40	dec-11
R2-00014	0.83	7.11	14.30	dec-11
R2-00015	0.88	3.03	12.10	dec-11
R2-00016	1.77	2.01	3.80	dec-11
R2-00017	0.48	0.82	6.30	dec-11
R2-00018	0.67	4.63	5.60	dec-11
R2-00019	1.47	1.24	2.40	dec-11
R2-00020	0.50	0.51	1.80	dec-11
R2-00021	0.50	0.33	2.30	dec-11
R2-00022	1.68	0.18	1.70	dec-11
R2-00023	1.26	1.06	46.60	dec-11
R2-00024	0.80	0.18	4.90	dec-11
R2-00025	1.47	2.51	96.30	dec-11
R2-00026	0.92	1.57	23.40	dec-11
R2-00027	1.20	35.59	79.60	dec-11
R2-00028	0.62	4.64	24.10	dec-11
R2-00029	0.6	8.04	30.90	dec-11
R2-00030	1.00	0.11	33.60	dec-11
R2-00031	0.45	1.14	35.60	dec-11
R2-00032	1.16	0.22	3.90	dec-11
R2-00033	0.80	0.86	59.80	dec-11
R2-00034	1.60	6.24	51.10	dec-11
R2-00035	0.96	0.13	1.40	dec-11
R2-00036	1.74	0.29	2.50	dec-11
R2-00037	0.29	1.20	4.00	dec-11
R2-00038	1.85	0.26	3.50	dec-11
R2-00039	0.80	0.09	1.80	dec-11
R2-00040	0.91	0.49	7.00	dec-11
R2-00041	0.52	0.38	9.80	dec-11
R2-00042	0.54	0.24	11.90	dec-11
R2-00043	0.65	0.75	5.30	dec-11
R2-00044	1.12	0.21	8.50	dec-11
R2-00045	1.67	17.66	63.50	dec-11
R2-00046	0.15	1.55	84.60	dec-11
R2-00047	0.20	0.96	13.70	dec-11
R2-00048	35.00	14.07	80.20	dec-11
R2-00049	0.10	2.02	7.00	dec-11
R2-00050	0.42	2.42	3.60	dec-11
R2-00051	0.20	21.87	500.00	dec-11
R2-00052	3.10	0.20	4.20	dec-11
R2-00053	0.60	15.82	58.50	dec-11
R2-00054	0.92	2.14	13.40	dec-11
R2-00055	0.27	46.21	89.70	dec-11
R2-00056	1.17	1.42	7.90	dec-11
R2-00057	0.44	10.59	46.00	dec-11
R2-00058	0.92	2.43	138.60	dec-11
R2-00059	1.24	2.65	77.60	dec-11
R2-00060	0.60	0.81	5.10	dec-11
R2-00061	0.50	1.43	8.20	dec-11
R2-00062	1.00	0.64	3.80	dec-11
R2-00063	0.80	0.81	4.80	dec-11
R2-00064	0.28	1.74	37.80	dec-11
R2-00065	0.83	0.61	5.10	dec-11
R2-00066	0.60	0.00	1.20	dec-11
R2-00067	1.87	2.96	11.80	dec-11
R2-00068	1.44	1.86	27.00	dec-11
R2-00069	0.67	1.22	10.70	dec-11
R2-00070	0.47	0.90	3.50	dec-11
R2-00071	0.80	5.04	127.90	dec-11
R2-00072	0.51	0.17	2.60	dec-11
R2-00073	0.50	2.03	17.00	dec-11
R2-00074	1.10	1.87	6.40	dec-11
R2-00075	0.80	0.13	2.00	dec-11
R2-00076	0.40	0.97	9.40	dec-11
R2-00077	0.87	0.27	3.10	dec-11
R2-00078	0.52	0.05	1.90	dec-11
R2-00079	1.03	0.40	4.00	dec-11
R2-00080	1.16	0.08	2.70	dec-11
R2-00081	0.90	1.57	9.20	dec-11
R2-00082	0.53	1.15	7.10	dec-11
R2-00083	0.38	0.63	28.90	dec-11
R2-00084	1.13	0.29	1.60	dec-11
R2-00085	0.66	0.21	2.70	dec-11
R2-00086	1.22	1.52	25.20	dec-11
R2-00087	0.40	0.17	3.10	dec-11
R2-00088	0.60	0.08	1.40	dec-11
R2-00089	0.54	0.07	0.70	dec-11
R2-00090	0.79	0.06	1.30	dec-11
R2-00091	0.70	0.17	0.90	dec-11
R2-00092	1.00	2.22	9.40	dec-11
R2-00093	1.00	30.22	32.80	dec-11
R2-00094	0.29	3.40	2.70	dec-11
R2-00095	1.10	0.70	0.90	dec-11
R2-00096	0.46	2.19	2.00	dec-11
R2-00097	1.00	0.11	0.80	dec-11
R2-00098	0.45	3.83	7.40	dec-11
R2-00099	0.70	0.43	2.10	dec-11
R2-00100	0.41	0.87	1.70	dec-11
R2-00101	0.60	0.08	0.80	dec-11

Channel Samples Taken in Papayo Mine

Sample	Thickness (m)	Au (ppm)	Ag (ppm)	Date
R2-00102	0.37	14.31	38.00	dec-11
R2-00103	0.45	1.18	8.40	dec-11
R2-00104	0.72	2.20	6.20	dec-11
R2-00105	0.40	1.03	3.10	dec-11
R2-00106	0.90	32.87	20.1	dec-11
R2-00107	0.83	0.99	99.5	dec-11
R2-00108	0.52	0.16	4.10	dec-11
R2-00109	2.00	45.04	16.00	dec-11
R2-00110	0.54	1.18	18.90	dec-11
R2-00111	0.70	0.32	2.10	dec-11
R2-00112	0.43	7.10	10.00	dec-11
R2-00113	0.90	0.33	1.20	dec-11
R2-00114	0.32	3.13	3.70	dec-11
R2-00115	0.90	2.21	4.20	dec-11
R2-00116	2.00	0.01	1.50	jun-12
R2-00117	1.05	16.85	2.40	jun-12
R2-00118	1.05	7.73	1.80	jun-12
R2-00119	1.20	1.81	2.10	jun-12
R2-00120	0.80	8.88	1.60	jun-12
R2-00121	1.80	0.03	4.90	jun-12
R2-00122	0.60	0.53	0.70	jun-12
R2-00123	0.70	12.75	28.90	jun-12
R2-00124	1.10	0.42	1.00	jun-12
R2-00125	0.80	1.86	0.90	jun-12
R2-00126	0.90	2.10	3.10	jun-12
R2-00127	0.35	2.66	1.60	jun-12
R2-00128	0.80	7.40	2.90	jun-12
R2-00129	0.85	1.61	2.30	jun-12
R2-00130	0.85	8.82	4.10	jun-12
R2-00131	1.10	0.97	1.70	jun-12
R2-00132	0.90	2.43	3.60	jun-12
R2-00133	0.40	1.47	1.60	jun-12
R2-00134	0.50	6.52	3.40	jun-12
R2-00135	0.37	2.78	9.50	jun-12
R2-00136	1.90	0.99	45.20	jun-12
R2-00137	1.35	1.06	56.10	jun-12
R2-00138	1.80	1.99	11.80	jun-12
R2-00139	1.20	0.42	1.00	jun-12
R2-00140	1.70	2.57	26.90	jun-12
R2-00141	0.60	90.6	69.00	jun-12
R2-00142	0.90	40.1	48.70	jun-12
R2-00143	0.60	1.79	1.10	jun-12
R2-00144	0.90	2.91	3.70	jun-12
R2-00145	0.30	2.26	5.70	jun-12
R2-00146	0.60	0.12	1.80	jun-12
R2-00147	1.00	2.99	1.80	jun-12
R2-00148	0.70	1.88	93.00	jun-12
R2-00149	0.60	3.65	23.60	jun-12
R2-00150	0.60	1.77	6.80	jun-12
R2-00151	0.50	48.6	6.80	jun-12
R2-00152	0.40	117.50	43.20	jun-12
R2-00153	0.40	12.80	4.80	jun-12
R2-00154	0.45	11.00	18.90	jun-12
R2-00155	0.23	14.80	33.90	jun-12
R2-00156	0.65	0.64	33.00	jun-12
R2-00157	0.40	54.10	27.00	jun-12
R2-00158	0.50	23.8	25.20	jun-12
R2-00159	0.50	0.47	19.20	jun-12
R2-00160	0.50	16.55	39.60	jun-12
R2-00161	0.40	0.41	16.80	jun-12
R2-00162	0.30	5.95	54.00	jun-12
R2-00163	0.20	1.99	9.40	jun-12
R2-00164	0.30	0.62	1.60	jun-12
R2-00165	0.65	0.65	5.50	jun-12
R2-00166	0.60	2.55	47.00	jun-12
R2-00167	0.40	0.26	2.40	jun-12
R2-00168	0.60	0.55	5.50	jun-12
R2-00169	0.30	6.90	5.70	jun-12
R2-00170	0.37	2.07	8.00	jun-12
R2-00171	0.45	8.41	4.40	jun-12
R2-00172	0.40	0.18	3.30	jun-12
R2-00173	0.30	0.32	2.30	jun-12
R2-00174	0.30	7.64	5.90	jun-12
R2-00175	0.20	1.93	8.90	jun-12
R2-00176	0.20	2.55	7.40	jun-12
R2-00177	0.20	2.92	13.10	jun-12
R2-00178	0.40	2.03	14.30	jun-12
R2-00179	0.30	0.61	78.90	jun-12
R2-00180	1.00	0.95	13.70	jun-12
R2-00181	0.50	3.91	3.30	jun-12
R2-00182	0.60	0.14	7.40	jun-12
R2-00183	0.60	0.60	6.00	jun-12
R2-00184	0.50	0.19	1.90	jun-12
R2-00185	0.35	4.16	11.40	jun-12
R2-00186	0.32	2.17	11.10	jun-12
R2-00187	0.90	0.05	3.00	jun-12
R2-00188	1.00	0.06	0.60	jun-12
R2-00189	0.60	6.73	4.30	jun-12
R2-00190	0.40	2.83	17.70	jun-12
R2-00191	0.40	0.42	9.90	jun-12
R2-00192	0.95	0.19	8.00	jun-12
R2-00193	0.30	0.54	3.00	jun-12
R2-00194	1.20	3.27	47.70	jun-12
R2-00195	0.20	20.90	57.50	jun-12
R2-00196	1.30	0.95	6.00	jun-12
R2-00197	0.20	4.45	52.00	jun-12
R2-00198	0.80	0.30	12.00	jun-12
R2-00199	0.12	14.15	845.00	jun-12
R2-00200	0.30	22.00	78.70	jun-12
R2-00201	0.70	4.07	56.50	jun-12
R2-00202	0.58	282.00	501.00	jun-12