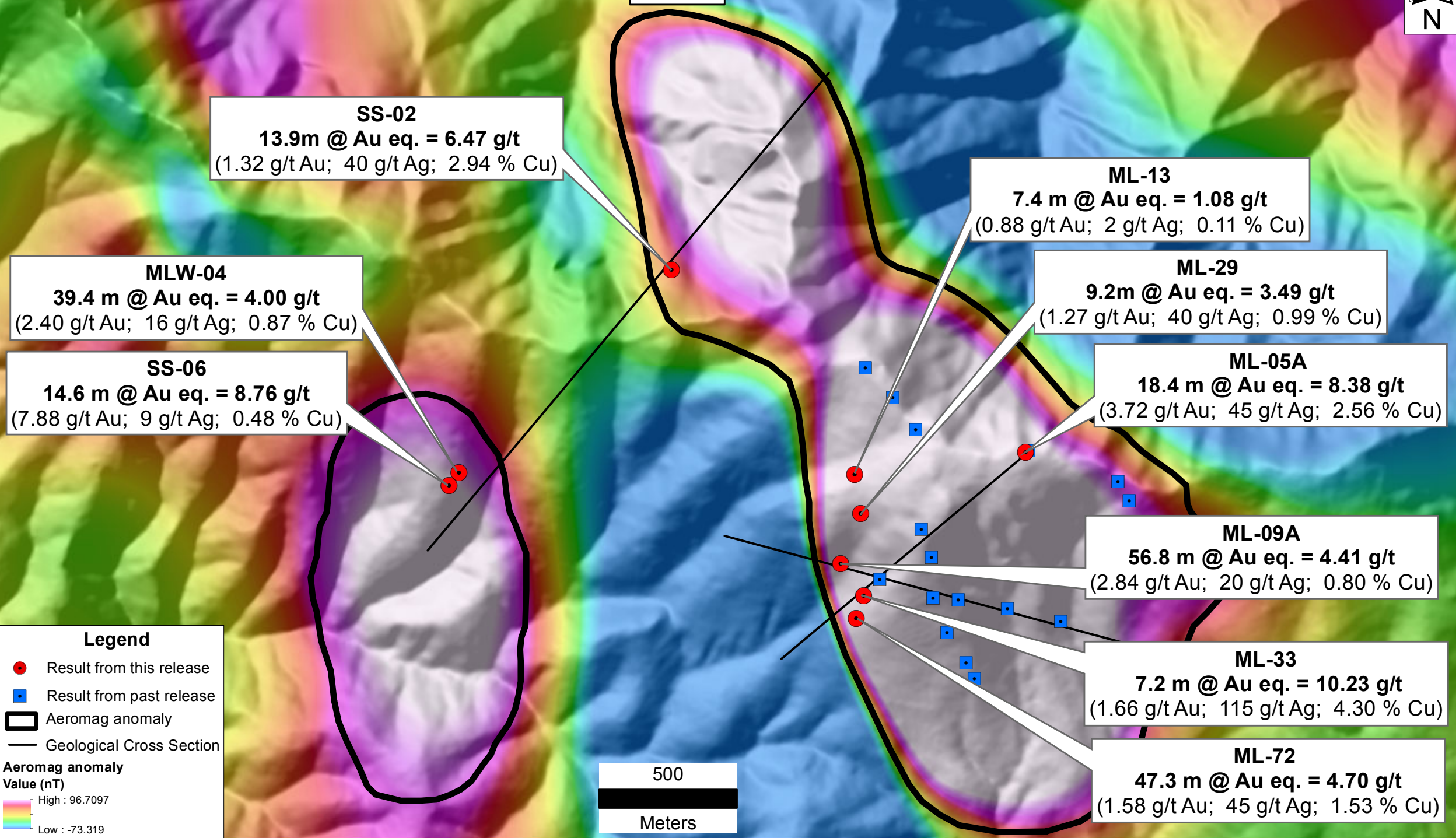


Media Luna – Drill Holes That Pierced The Marble / Intrusive Contact Zone



Figure 1



SS-02
 13.9m @ Au eq. = 6.47 g/t
 (1.32 g/t Au; 40 g/t Ag; 2.94 % Cu)

ML-13
 7.4 m @ Au eq. = 1.08 g/t
 (0.88 g/t Au; 2 g/t Ag; 0.11 % Cu)

MLW-04
 39.4 m @ Au eq. = 4.00 g/t
 (2.40 g/t Au; 16 g/t Ag; 0.87 % Cu)

ML-29
 9.2m @ Au eq. = 3.49 g/t
 (1.27 g/t Au; 40 g/t Ag; 0.99 % Cu)

SS-06
 14.6 m @ Au eq. = 8.76 g/t
 (7.88 g/t Au; 9 g/t Ag; 0.48 % Cu)

ML-05A
 18.4 m @ Au eq. = 8.38 g/t
 (3.72 g/t Au; 45 g/t Ag; 2.56 % Cu)

ML-09A
 56.8 m @ Au eq. = 4.41 g/t
 (2.84 g/t Au; 20 g/t Ag; 0.80 % Cu)

ML-33
 7.2 m @ Au eq. = 10.23 g/t
 (1.66 g/t Au; 115 g/t Ag; 4.30 % Cu)

ML-72
 47.3 m @ Au eq. = 4.70 g/t
 (1.58 g/t Au; 45 g/t Ag; 1.53 % Cu)

Legend

- Result from this release
- Result from past release
- Aeromag anomaly
- Geological Cross Section

Aeromag anomaly Value (nT)

High : 96.7097

Low : -73.319

500
 Meters