



Photo 1: New 500kVA power line connecting to the new Calingasta substation. The Casposo Mine will move from diesel to grid power in the month of December

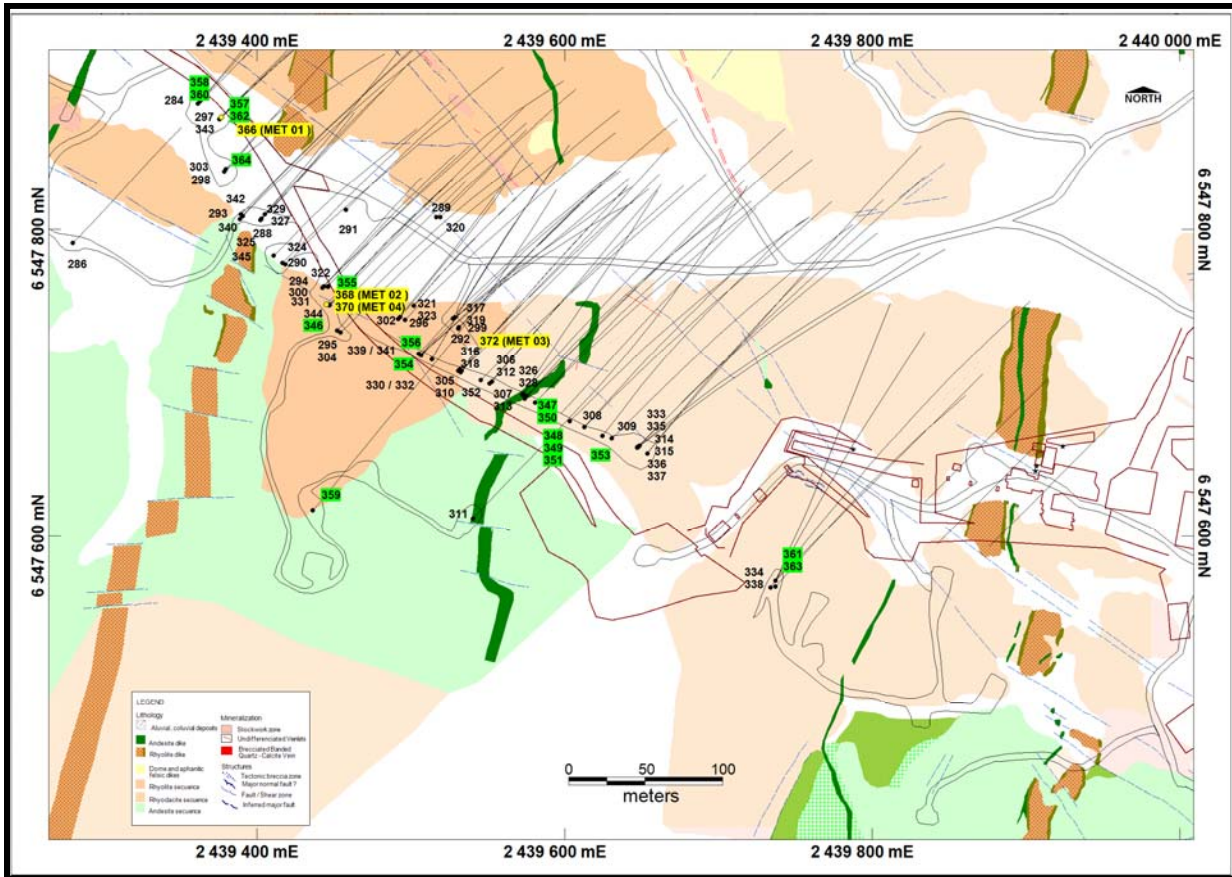


Figure 1: Kamila Southeast – Inca 2 Zone Geology with Recent Infill and Step-out Drilling

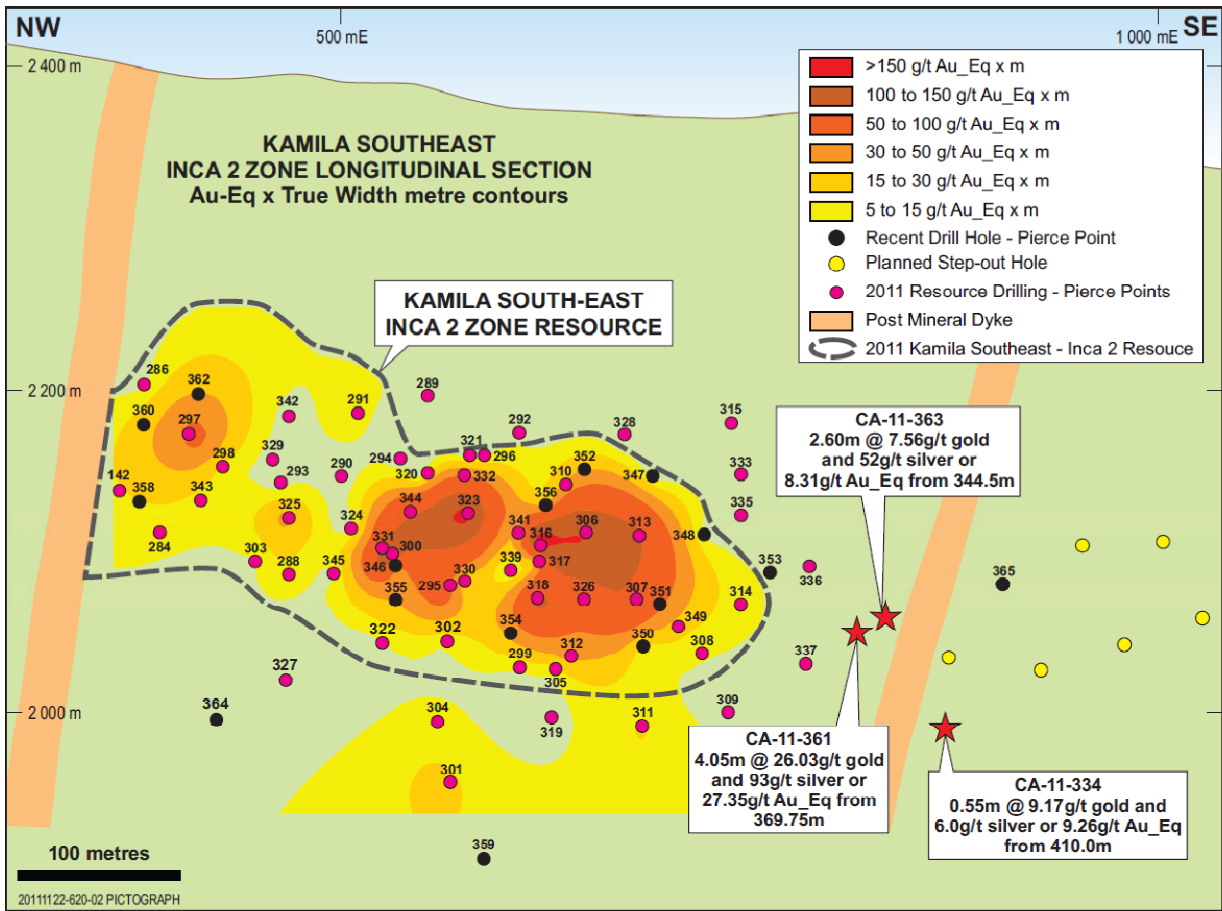


Figure 2: Kamila Southeast –Inca 2 Zone Resource – Recent Infill and step-out Drilling

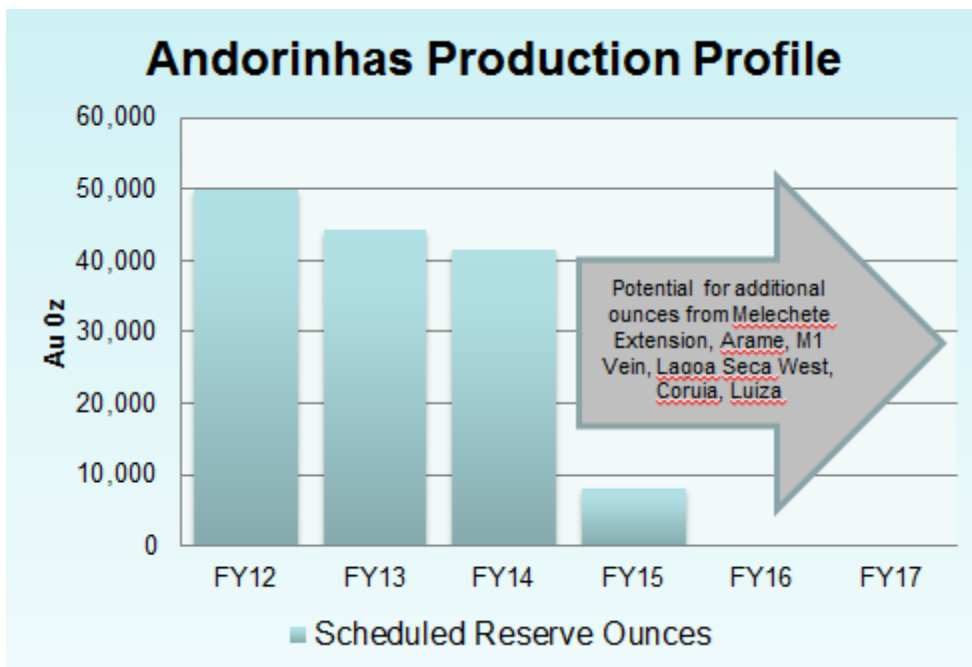


Figure 3: Andorinhas Forecast Production Profile and Potential for Additional Production from Melechete Deeps Extension, Arame Lode, M1 Lode, Lagoa Seca West, Coruja NE and Luiza Targets

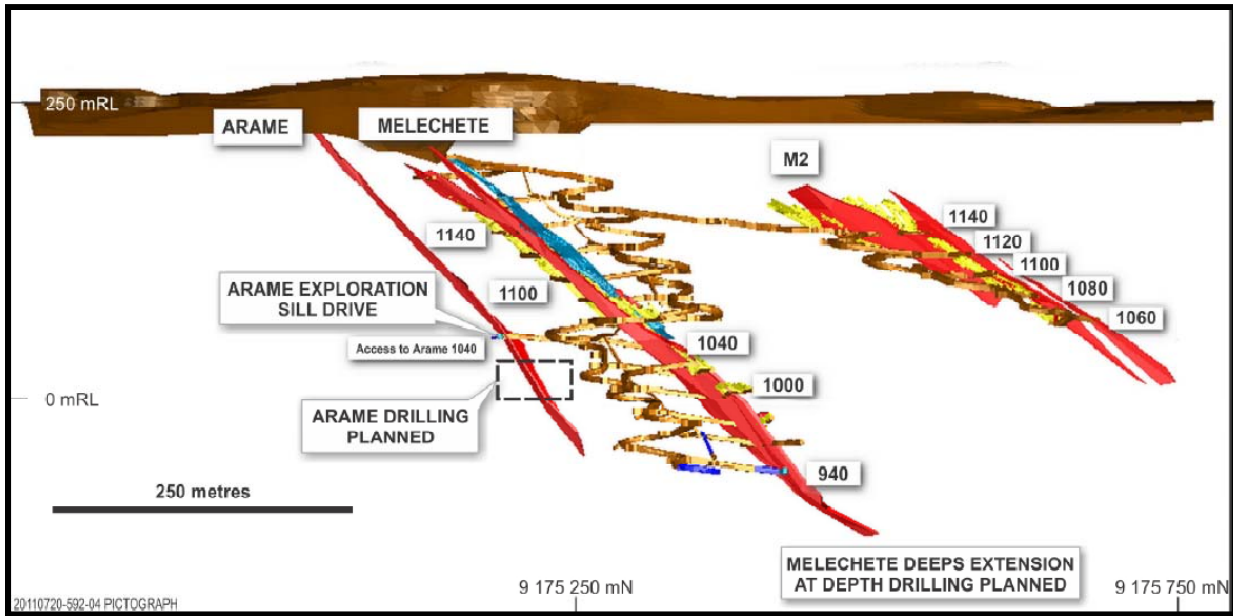


Figure 4: Andorinhas Generalised Mine Section - Arame Lode in the footwall of the Melechete ore body. An Exploratory Sill Drive has defined 66m of strike with the mineralised vein averaging 1.08m at 11g/t gold