

Figure 1: Three-dimensional NW-SE long-section illustrating the down-dip exploration potential of the five sulphide bodies discovered to date.

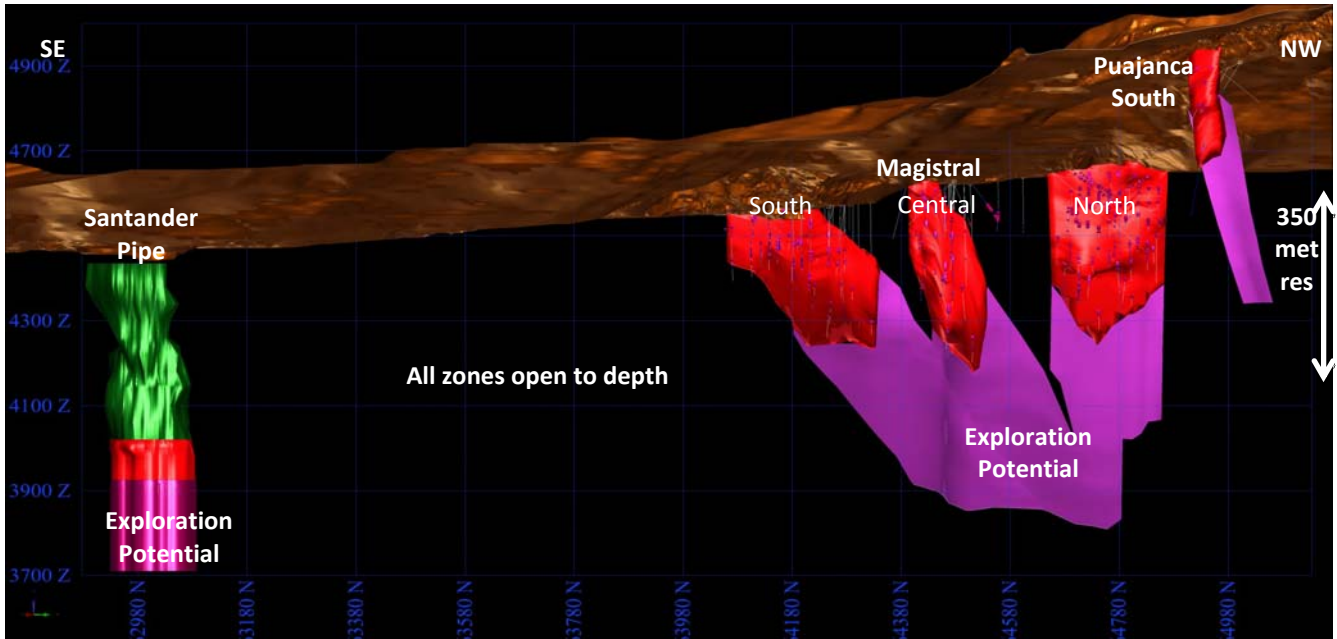


Figure 2: Schematic regional N-S transect through the central portion of the Central Mineral Belt illustrating vertical depth extent of known polymetallic systems (from present day erosion level to drilled depth extent – note majority of the deposits remain open).

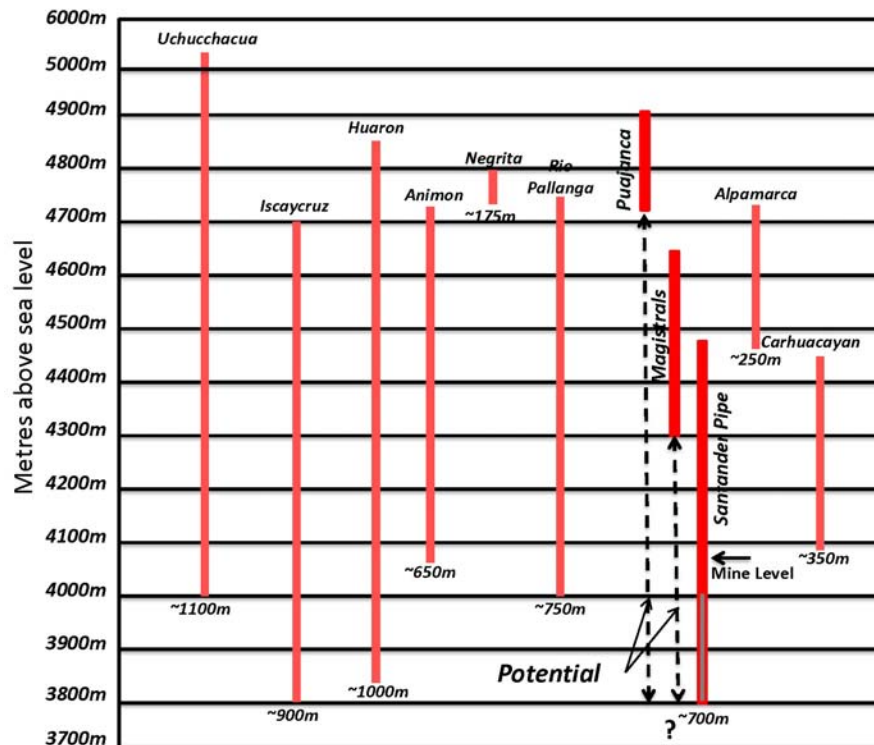


Figure 3. Geological maps of Santander property showing location of known deposits, high priority targets at Puajanca North, El Toro and Yanacocha and structural - lithological targets. Dashed lines highlight the 14 and 3 km long Magistral and Santander – Puajanca mineral fairways.

