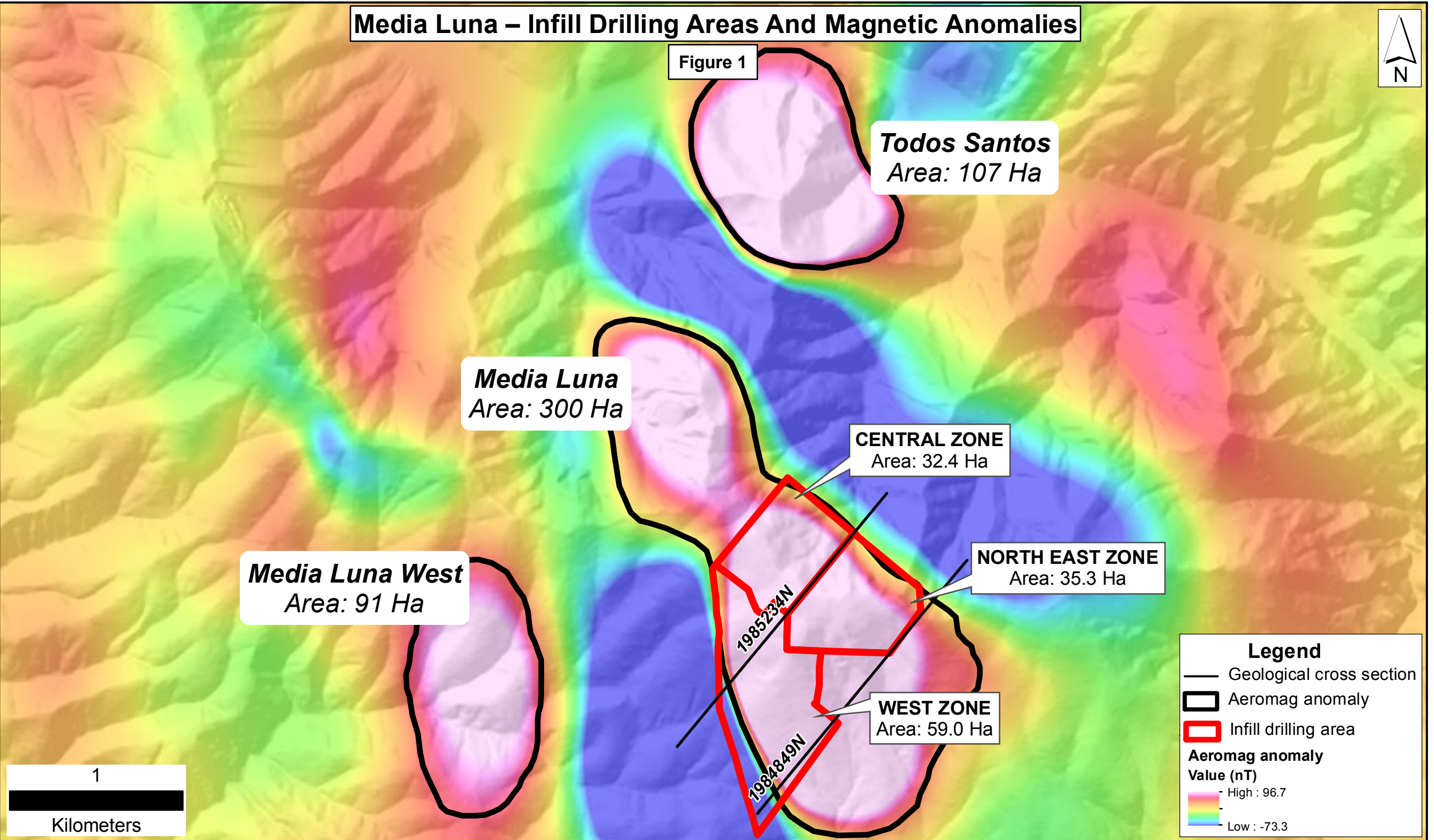


Media Luna – Infill Drilling Areas And Magnetic Anomalies



Figure 1



Todos Santos
Area: 107 Ha

Media Luna
Area: 300 Ha

Media Luna West
Area: 91 Ha

CENTRAL ZONE
Area: 32.4 Ha

NORTH EAST ZONE
Area: 35.3 Ha

WEST ZONE
Area: 59.0 Ha

1
Kilometers

Legend

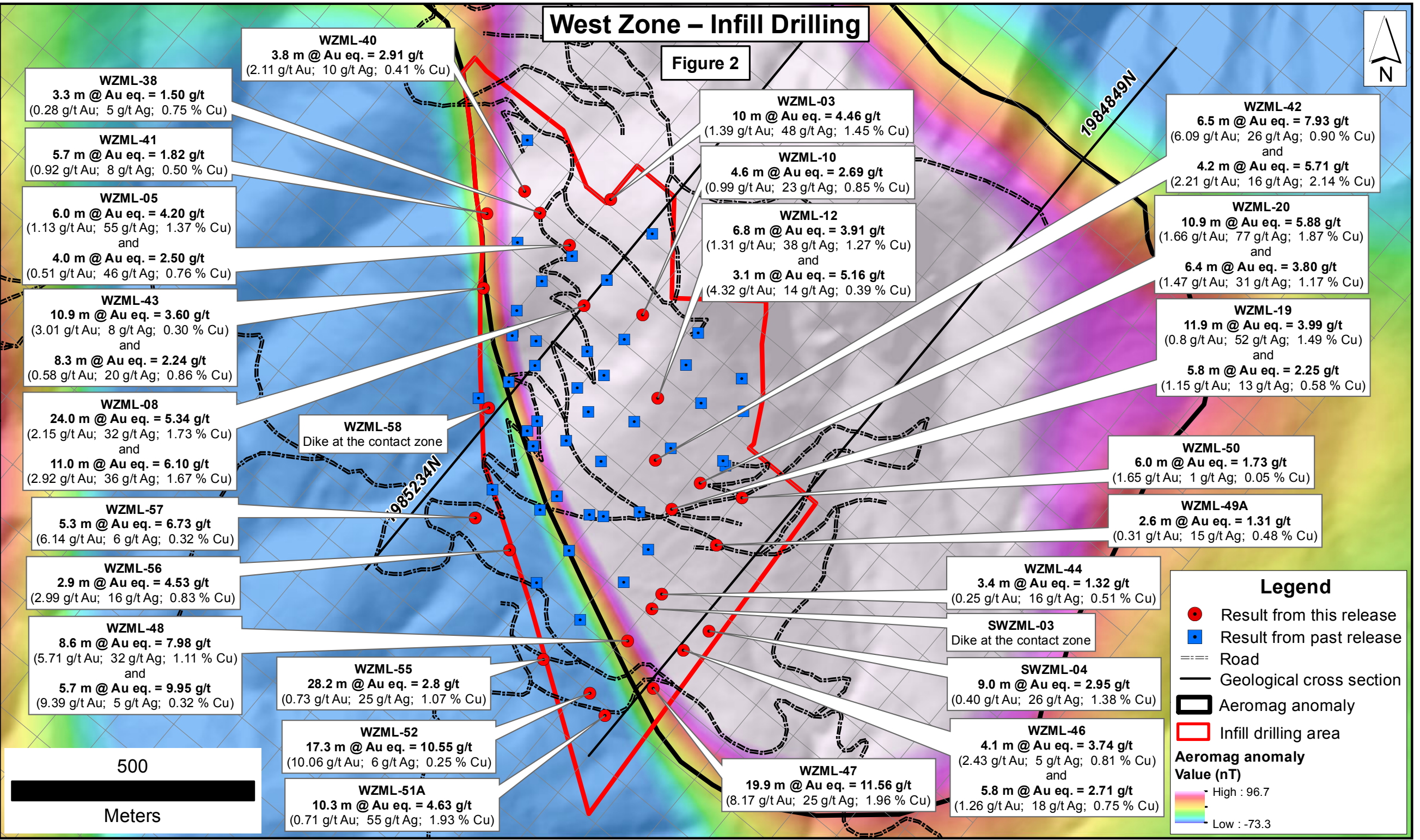
- Geological cross section
- ▭ Aeromag anomaly
- ▭ Infill drilling area

Aeromag anomaly Value (nT)

- High : 96.7
- Low : -73.3

West Zone – Infill Drilling

Figure 2



WZML-38
3.3 m @ Au eq. = 1.50 g/t
(0.28 g/t Au; 5 g/t Ag; 0.75 % Cu)

WZML-41
5.7 m @ Au eq. = 1.82 g/t
(0.92 g/t Au; 8 g/t Ag; 0.50 % Cu)

WZML-05
6.0 m @ Au eq. = 4.20 g/t
(1.13 g/t Au; 55 g/t Ag; 1.37 % Cu)
and
4.0 m @ Au eq. = 2.50 g/t
(0.51 g/t Au; 46 g/t Ag; 0.76 % Cu)

WZML-43
10.9 m @ Au eq. = 3.60 g/t
(3.01 g/t Au; 8 g/t Ag; 0.30 % Cu)
and
8.3 m @ Au eq. = 2.24 g/t
(0.58 g/t Au; 20 g/t Ag; 0.86 % Cu)

WZML-08
24.0 m @ Au eq. = 5.34 g/t
(2.15 g/t Au; 32 g/t Ag; 1.73 % Cu)
and
11.0 m @ Au eq. = 6.10 g/t
(2.92 g/t Au; 36 g/t Ag; 1.67 % Cu)

WZML-57
5.3 m @ Au eq. = 6.73 g/t
(6.14 g/t Au; 6 g/t Ag; 0.32 % Cu)

WZML-56
2.9 m @ Au eq. = 4.53 g/t
(2.99 g/t Au; 16 g/t Ag; 0.83 % Cu)

WZML-48
8.6 m @ Au eq. = 7.98 g/t
(5.71 g/t Au; 32 g/t Ag; 1.11 % Cu)
and
5.7 m @ Au eq. = 9.95 g/t
(9.39 g/t Au; 5 g/t Ag; 0.32 % Cu)

WZML-40
3.8 m @ Au eq. = 2.91 g/t
(2.11 g/t Au; 10 g/t Ag; 0.41 % Cu)

WZML-58
Dike at the contact zone

WZML-55
28.2 m @ Au eq. = 2.8 g/t
(0.73 g/t Au; 25 g/t Ag; 1.07 % Cu)

WZML-52
17.3 m @ Au eq. = 10.55 g/t
(10.06 g/t Au; 6 g/t Ag; 0.25 % Cu)

WZML-51A
10.3 m @ Au eq. = 4.63 g/t
(0.71 g/t Au; 55 g/t Ag; 1.93 % Cu)

WZML-03
10 m @ Au eq. = 4.46 g/t
(1.39 g/t Au; 48 g/t Ag; 1.45 % Cu)

WZML-10
4.6 m @ Au eq. = 2.69 g/t
(0.99 g/t Au; 23 g/t Ag; 0.85 % Cu)

WZML-12
6.8 m @ Au eq. = 3.91 g/t
(1.31 g/t Au; 38 g/t Ag; 1.27 % Cu)
and
3.1 m @ Au eq. = 5.16 g/t
(4.32 g/t Au; 14 g/t Ag; 0.39 % Cu)

WZML-42
6.5 m @ Au eq. = 7.93 g/t
(6.09 g/t Au; 26 g/t Ag; 0.90 % Cu)
and
4.2 m @ Au eq. = 5.71 g/t
(2.21 g/t Au; 16 g/t Ag; 2.14 % Cu)

WZML-20
10.9 m @ Au eq. = 5.88 g/t
(1.66 g/t Au; 77 g/t Ag; 1.87 % Cu)
and
6.4 m @ Au eq. = 3.80 g/t
(1.47 g/t Au; 31 g/t Ag; 1.17 % Cu)

WZML-19
11.9 m @ Au eq. = 3.99 g/t
(0.8 g/t Au; 52 g/t Ag; 1.49 % Cu)
and
5.8 m @ Au eq. = 2.25 g/t
(1.15 g/t Au; 13 g/t Ag; 0.58 % Cu)

WZML-50
6.0 m @ Au eq. = 1.73 g/t
(1.65 g/t Au; 1 g/t Ag; 0.05 % Cu)

WZML-49A
2.6 m @ Au eq. = 1.31 g/t
(0.31 g/t Au; 15 g/t Ag; 0.48 % Cu)

WZML-44
3.4 m @ Au eq. = 1.32 g/t
(0.25 g/t Au; 16 g/t Ag; 0.51 % Cu)

SWZML-03
Dike at the contact zone

SWZML-04
9.0 m @ Au eq. = 2.95 g/t
(0.40 g/t Au; 26 g/t Ag; 1.38 % Cu)

WZML-46
4.1 m @ Au eq. = 3.74 g/t
(2.43 g/t Au; 5 g/t Ag; 0.81 % Cu)
and
5.8 m @ Au eq. = 2.71 g/t
(1.26 g/t Au; 18 g/t Ag; 0.75 % Cu)

WZML-47
19.9 m @ Au eq. = 11.56 g/t
(8.17 g/t Au; 25 g/t Ag; 1.96 % Cu)

Legend

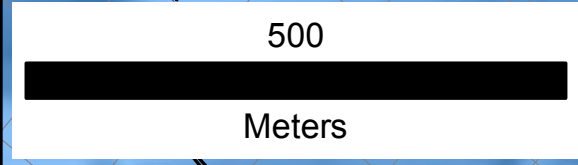
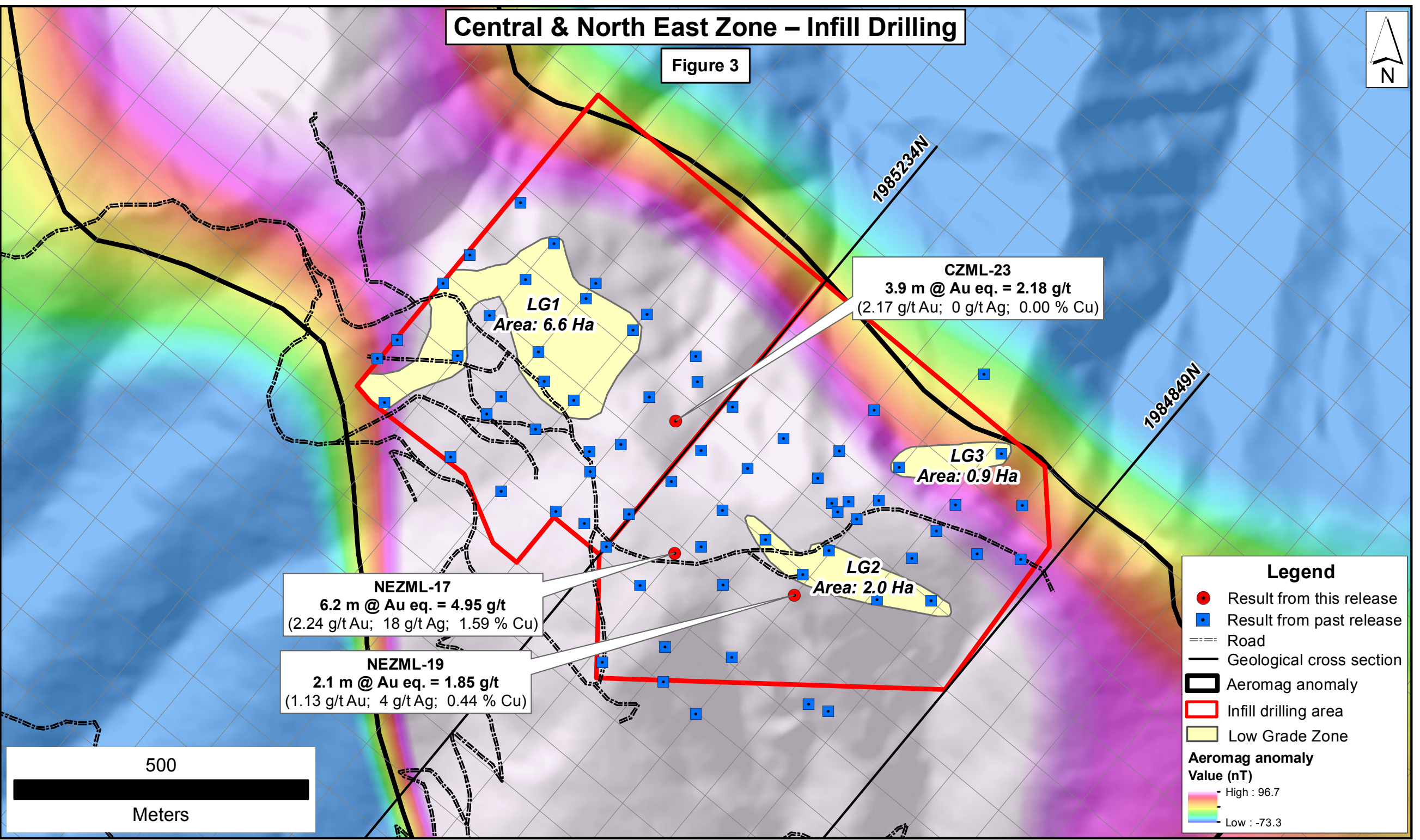
- Result from this release
 - Result from past release
 - Road
 - Geological cross section
 - ▭ Aeromag anomaly
 - ▭ Infill drilling area
- Aeromag anomaly Value (nT)**
- High : 96.7
 - Low : -73.3

500

Meters

Central & North East Zone – Infill Drilling

Figure 3



Legend

- Result from this release
- Result from past release
- Road
- Geological cross section
- ▭ Aeromag anomaly
- ▭ Infill drilling area
- ▭ Low Grade Zone

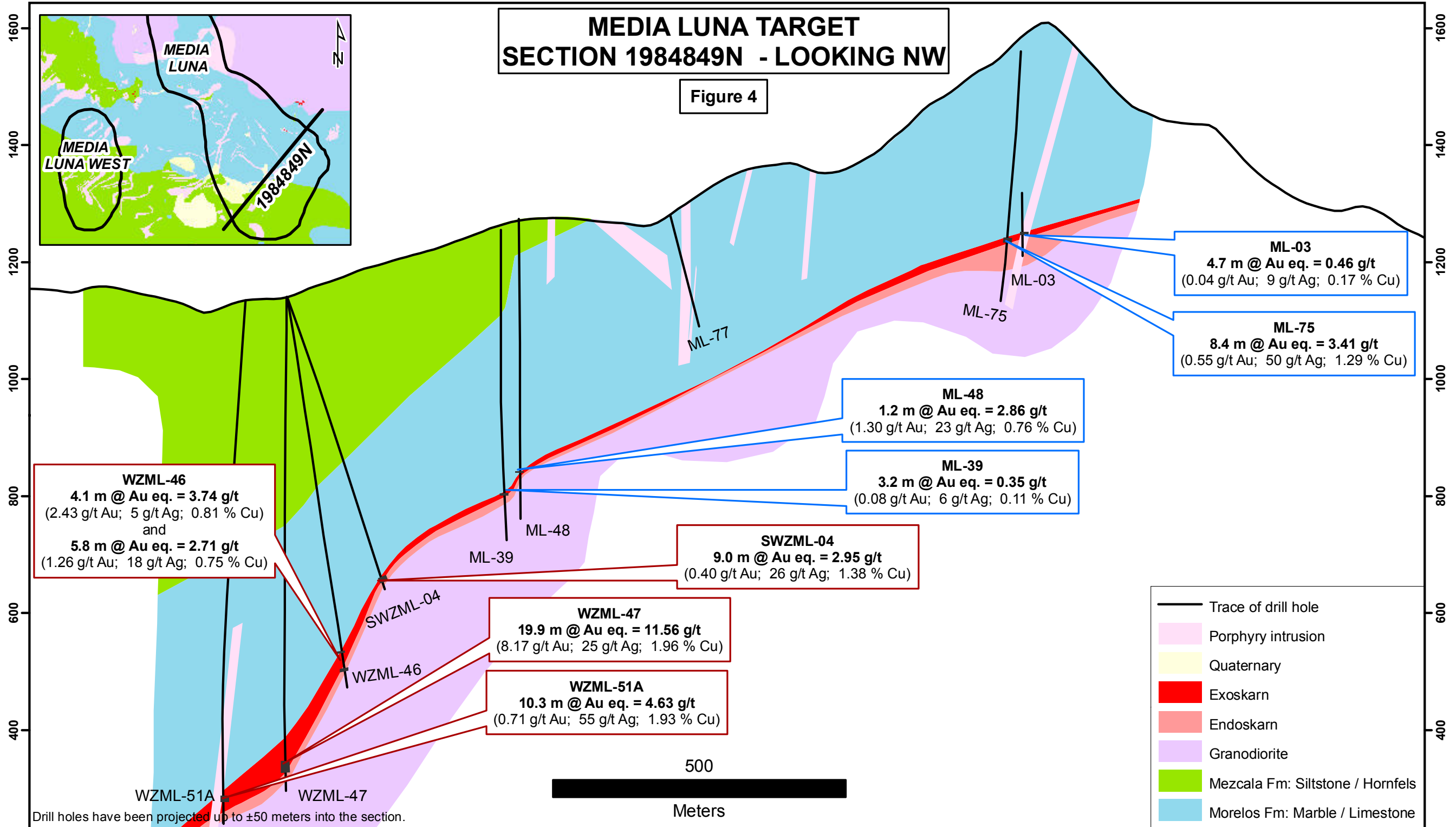
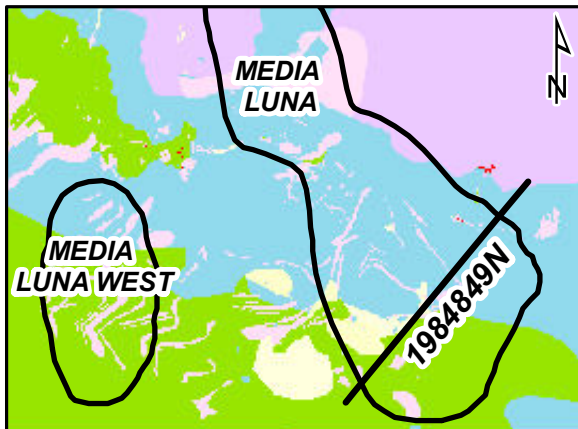
Aeromag anomaly Value (nT)

High : 96.7

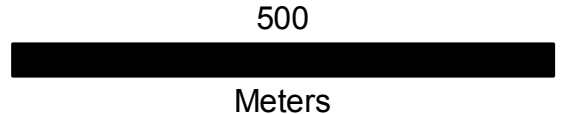
Low : -73.3

MEDIA LUNA TARGET SECTION 1984849N - LOOKING NW

Figure 4



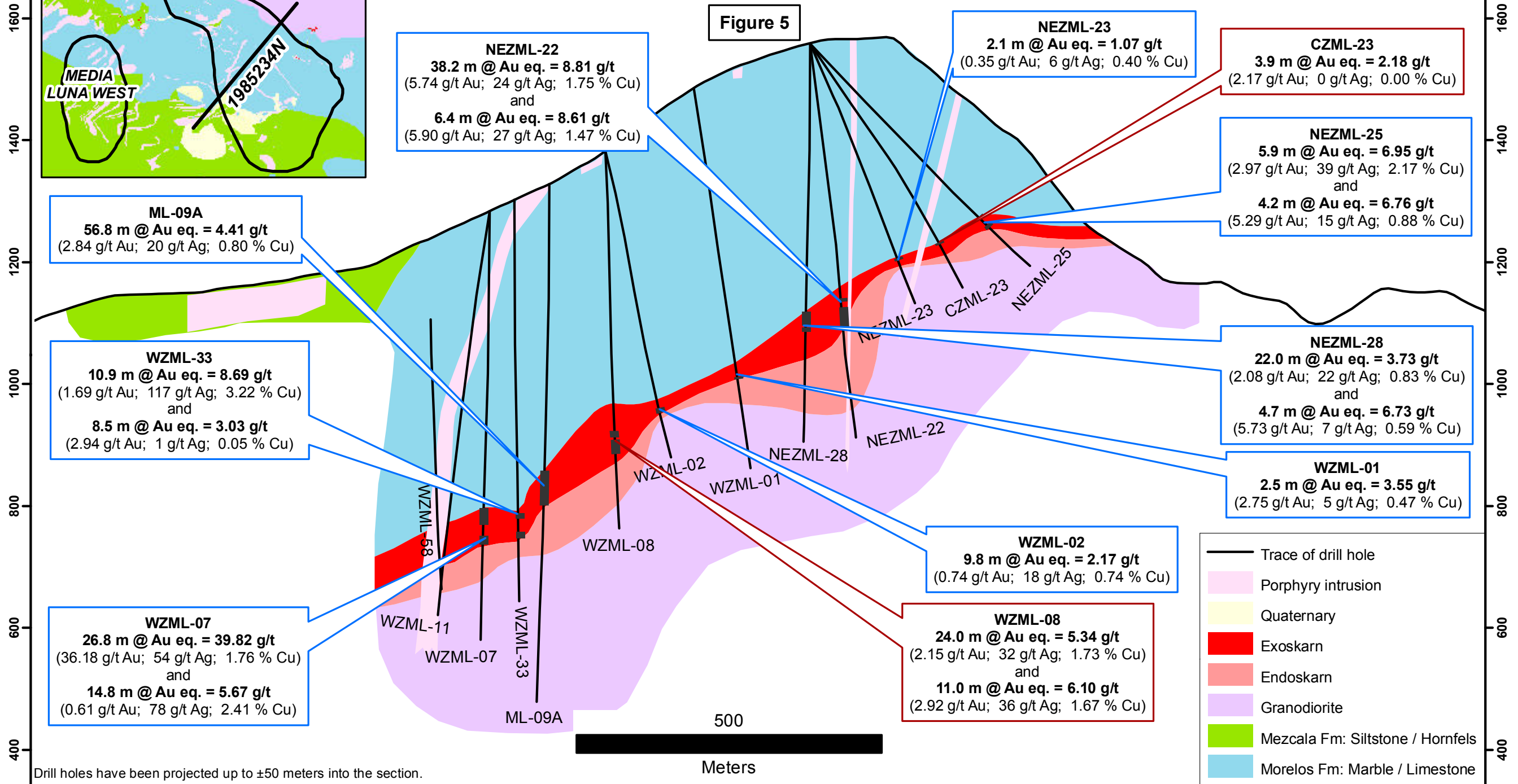
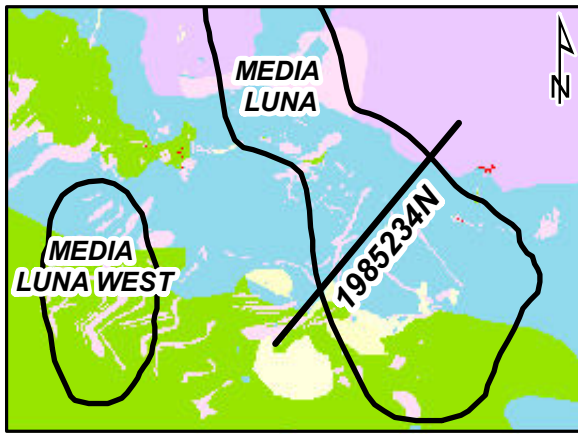
Drill holes have been projected up to ±50 meters into the section.



- Trace of drill hole
- Porphyry intrusion
- Quaternary
- Exoskarn
- Endoskarn
- Granodiorite
- Mezcala Fm: Siltstone / Hornfels
- Morelos Fm: Marble / Limestone

MEDIA LUNA TARGET SECTION 1985234N - LOOKING NW

Figure 5



NEZML-22
38.2 m @ Au eq. = 8.81 g/t
 (5.74 g/t Au; 24 g/t Ag; 1.75 % Cu)
 and
6.4 m @ Au eq. = 8.61 g/t
 (5.90 g/t Au; 27 g/t Ag; 1.47 % Cu)

NEZML-23
2.1 m @ Au eq. = 1.07 g/t
 (0.35 g/t Au; 6 g/t Ag; 0.40 % Cu)

CZML-23
3.9 m @ Au eq. = 2.18 g/t
 (2.17 g/t Au; 0 g/t Ag; 0.00 % Cu)

NEZML-25
5.9 m @ Au eq. = 6.95 g/t
 (2.97 g/t Au; 39 g/t Ag; 2.17 % Cu)
 and
4.2 m @ Au eq. = 6.76 g/t
 (5.29 g/t Au; 15 g/t Ag; 0.88 % Cu)

ML-09A
56.8 m @ Au eq. = 4.41 g/t
 (2.84 g/t Au; 20 g/t Ag; 0.80 % Cu)

WZML-33
10.9 m @ Au eq. = 8.69 g/t
 (1.69 g/t Au; 117 g/t Ag; 3.22 % Cu)
 and
8.5 m @ Au eq. = 3.03 g/t
 (2.94 g/t Au; 1 g/t Ag; 0.05 % Cu)

NEZML-28
22.0 m @ Au eq. = 3.73 g/t
 (2.08 g/t Au; 22 g/t Ag; 0.83 % Cu)
 and
4.7 m @ Au eq. = 6.73 g/t
 (5.73 g/t Au; 7 g/t Ag; 0.59 % Cu)

WZML-01
2.5 m @ Au eq. = 3.55 g/t
 (2.75 g/t Au; 5 g/t Ag; 0.47 % Cu)

WZML-02
9.8 m @ Au eq. = 2.17 g/t
 (0.74 g/t Au; 18 g/t Ag; 0.74 % Cu)

WZML-07
26.8 m @ Au eq. = 39.82 g/t
 (36.18 g/t Au; 54 g/t Ag; 1.76 % Cu)
 and
14.8 m @ Au eq. = 5.67 g/t
 (0.61 g/t Au; 78 g/t Ag; 2.41 % Cu)

WZML-08
24.0 m @ Au eq. = 5.34 g/t
 (2.15 g/t Au; 32 g/t Ag; 1.73 % Cu)
 and
11.0 m @ Au eq. = 6.10 g/t
 (2.92 g/t Au; 36 g/t Ag; 1.67 % Cu)

- Trace of drill hole
- Porphyry intrusion
- Quaternary
- Exoskarn
- Endoskarn
- Granodiorite
- Mezcala Fm: Siltstone / Hornfels
- Morelos Fm: Marble / Limestone

Drill holes have been projected up to ±50 meters into the section.

Meters