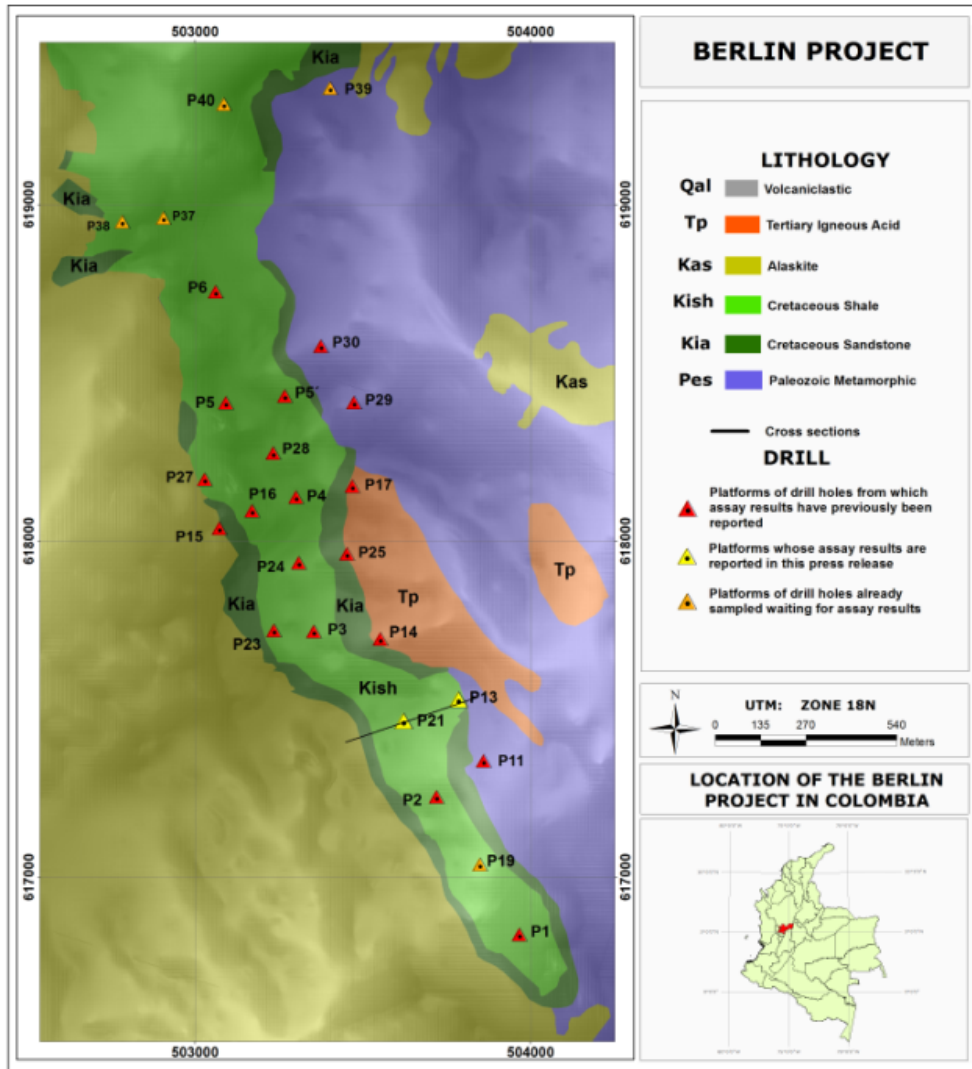


Figure 2 – Drill Platform Locations in the Southern Part of the Mineralized Trend at Berlin



Geological map of the southernmost 3km of the 10.5km long fold (syncline) in the Berlin Project. The triangles mark the location of U308 Corp’s drill platforms. The Cross Section (Figure 3) from which assay results are reported in this press release (Table 1) is shown as a black line on the above map. Cross Section 4 was defined by bore holes drilled from platforms P13 and P21.