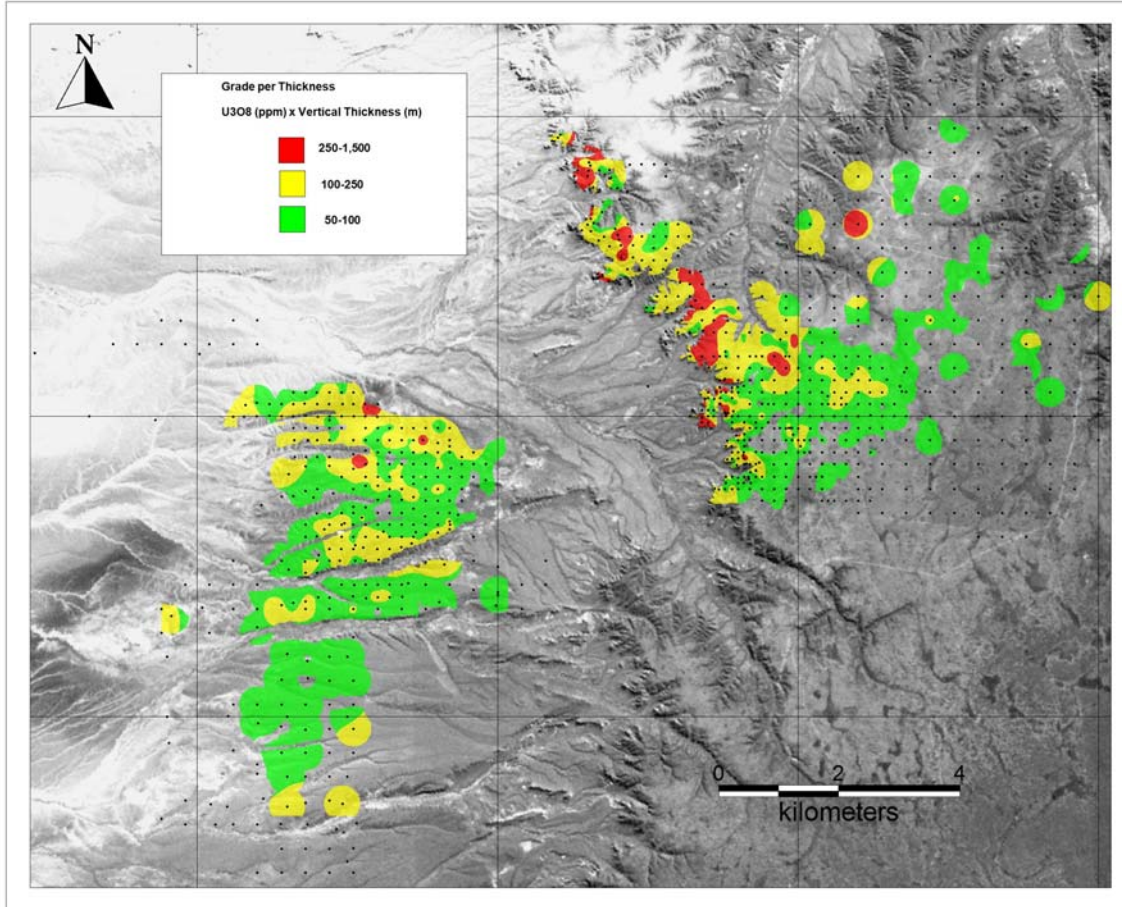


**Figure 2 – Uranium Grade-Thickness Map of the Laguna Salada Project**



Uranium grade-thickness map of the Laguna Salada Project on a satellite image, which shows the principal geographic features of the area. Grade-thickness is the product of the thickness of the mineralized zone in metres and the  $U_3O_8$  grade in ppm. Two mineralized zones have been identified from a trenching program whose results are reported in this press release (Table 1).