

Figure 1. Map showing the ground scintillometer radiometric anomaly at Aricheng South with the location of Phase I and II drill holes labelled in black and the first group of Phase III drill holes, results of which are reported here, labelled in red.

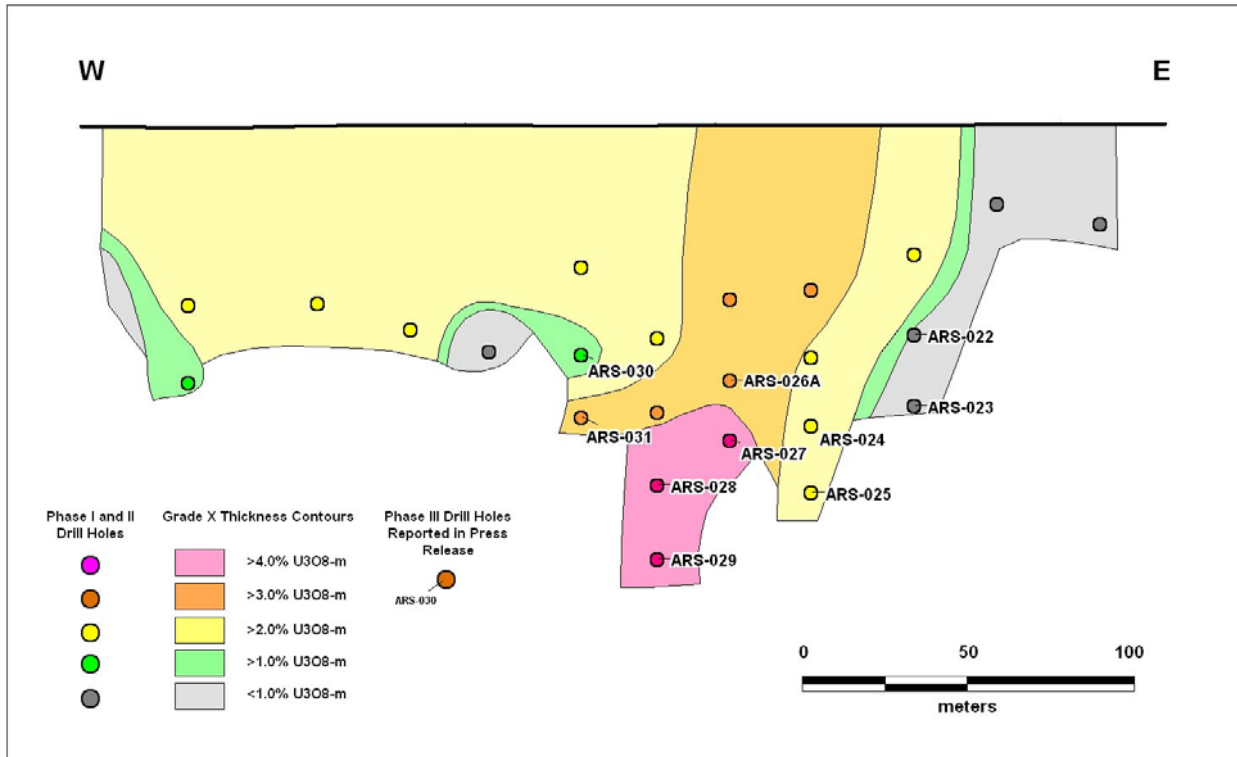


Figure 2. A provisional long section of the principal structure at Aricheng South showing the distribution of grade-thickness values (the product of the width of the mineralized interval and its U_3O_8 grade in %) on a vertical projection of the structure. The coloured circles demarcate the pierce points on the structure. (A pierce point is the approximate location at which each bore hole intersects the structure).

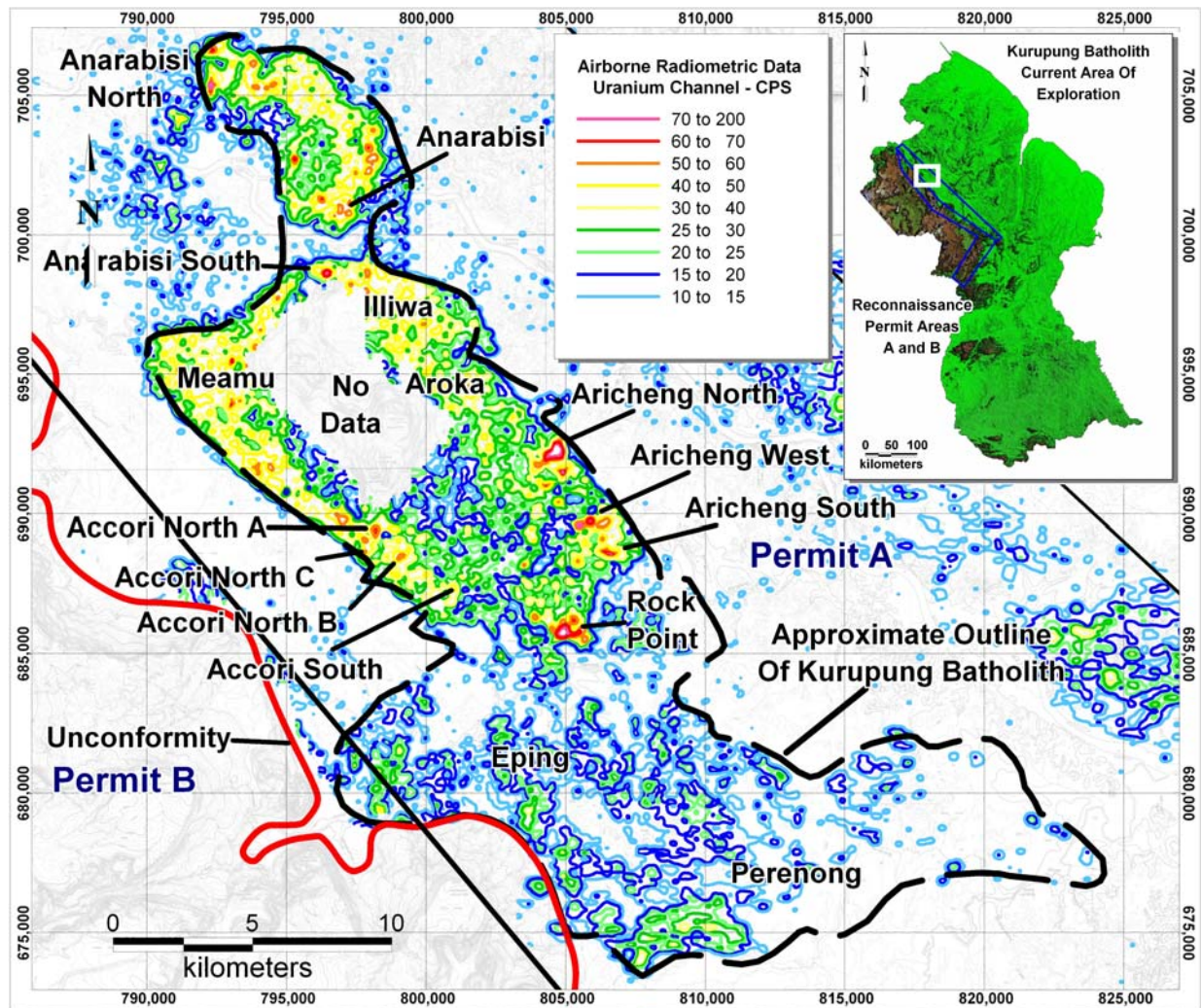


Figure 3. Uranium radiometric data from the airborne geophysics survey carried out by U3O8 Corp. over the Kurupung Batholith showing the location of the principal uranium targets.