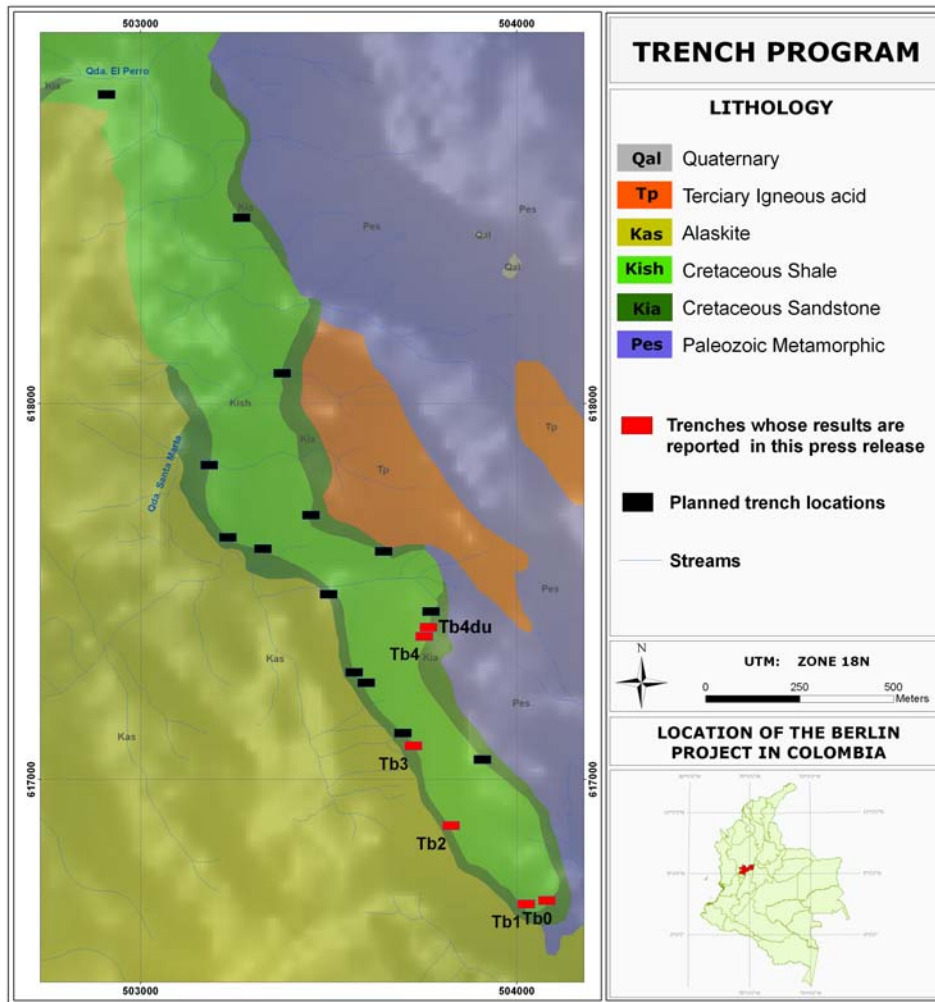


**Figure 1 – The Southern 4.4 Kilometres of the Syncline of the Berlin Project, Colombia**



Geological map of the southern most 4.4 kilometre part of the 10.5 kilometre long syncline of the Berlin Project in Caldas Province, Colombia. The black boxes mark the proposed location of trenches planned in the 2010 program. The red boxes are the location of the trenches whose assay results are reported in this press release.