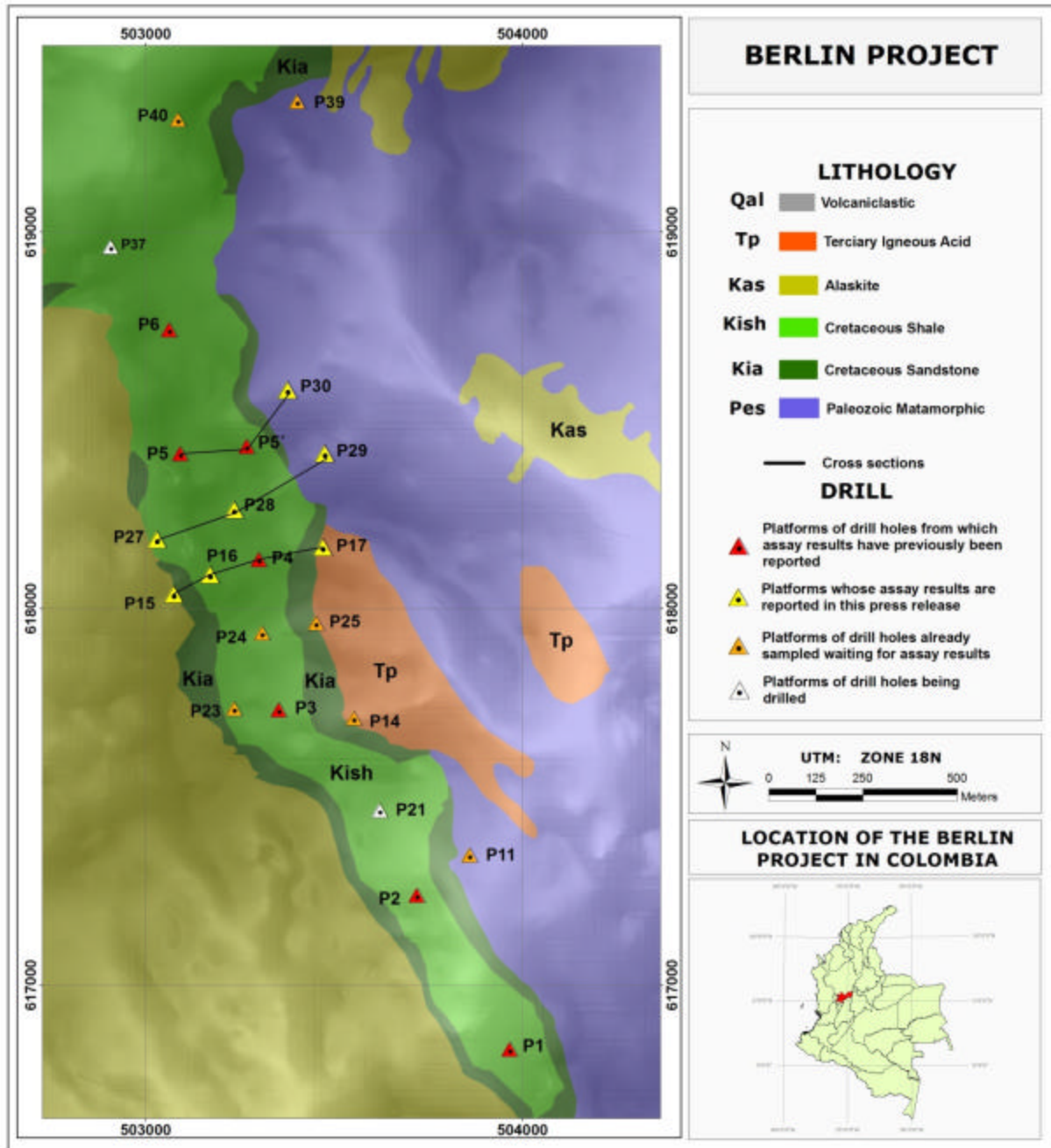


**Figure 2 – Drill Hole Location in the Southern Part of the Mineralized Trend on the Berlin Project**



Geological map of the southernmost 3km of the 10.5km long fold (syncline) in the Berlin Project. The triangles mark the location of U3O8 Corp’s drill platforms. The three Cross Sections (Figures 3, 4 and 5) from which assay results are reported in this press release (Table 1) are shown as black lines on the above map, which were drilled from platforms P4, P15, P16 and P17 (Cross Section 7), P27, P28 and P29 (Cross Section 8) and P5, P5’ and P30 (Cross Section 9).