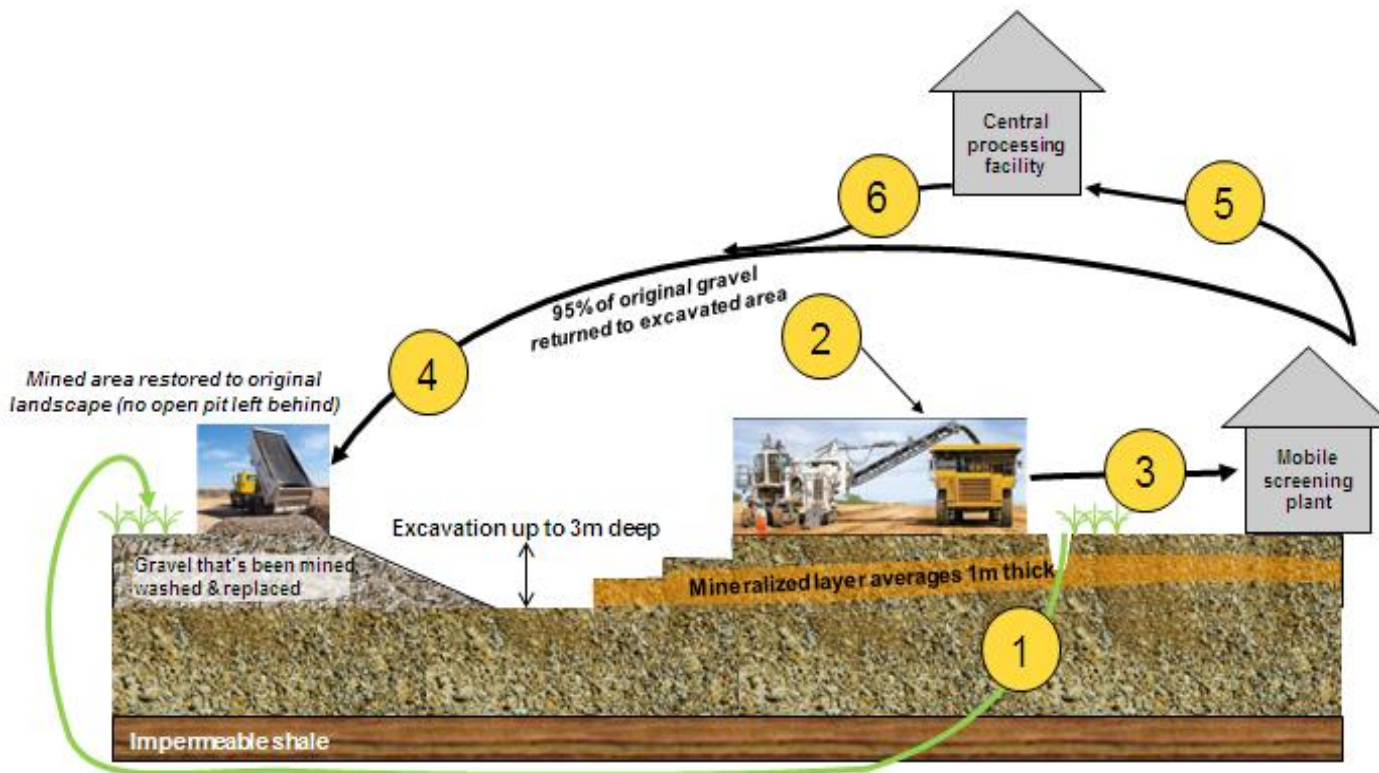


**Figure 2 – Continuous Surface Mining Scenario Being Considered for the Laguna Salada Deposit, Argentina**



1. Vegetation removed ahead of continuous miner & replanted over excavated area.
2. Continuous surface miner lifts gravel to transport truck via conveyor (no crushing, no blasting required).
3. 100 tonne truck-trailers transport gravel to screening facility.
4. After washing with water & screening, 90% of original gravel is returned to excavated area to await final contouring to original topography.
5. Fine mineralized material (10% of original gravel mass) is mixed with water & pumped to processing facility.
6. After processing, a further 5% of original gravel mass is returned to excavated area.

~95% of original gravel mass returned to excavated area to restore to original landscape & revegetated with plants removed prior to mining.