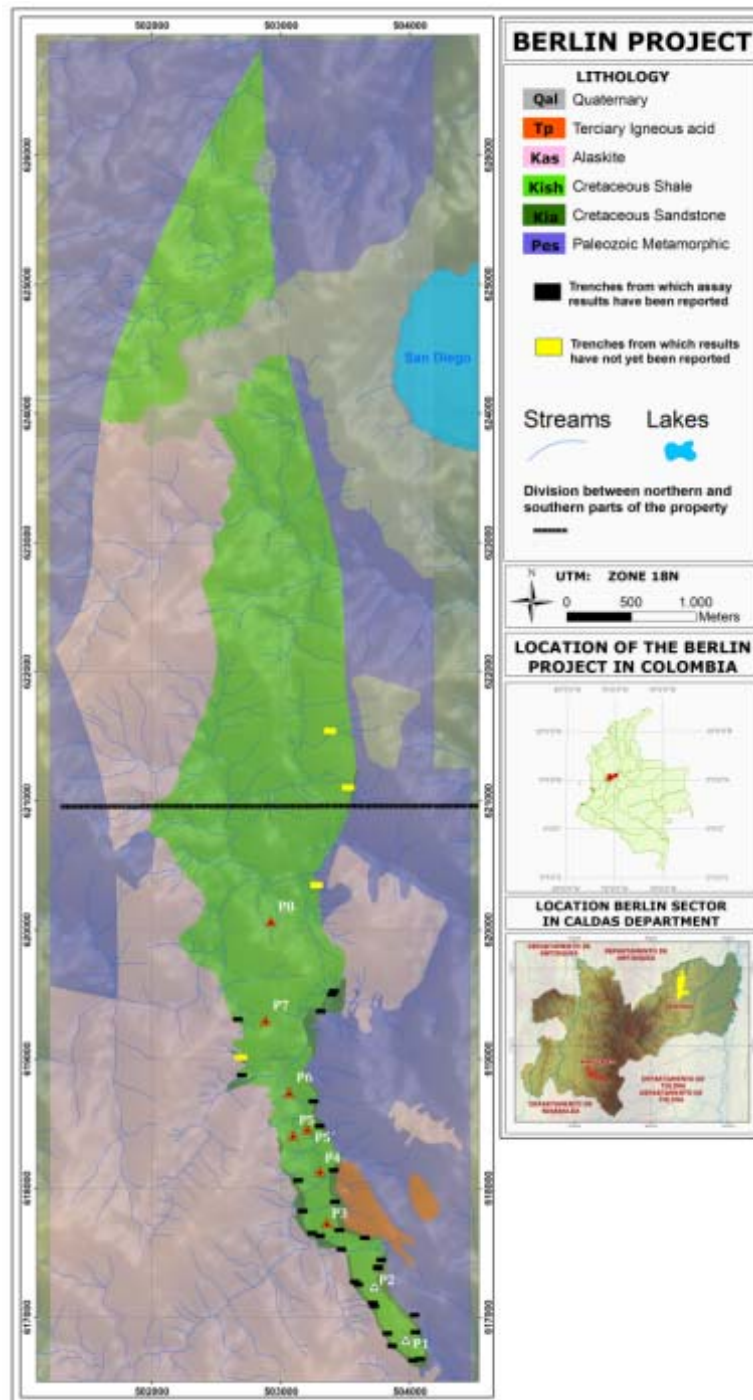


**Figure 1 – Map Shows the Location of Trenches and Drill Platforms in the Southern Part of the 10.5km Long Fold in the Berlin Project and the Extent of the Alaskite Batholiths**



Geological map of the 10.5km long syncline in Cretaceous strata (green shades) in the Berlin Project. The pink coloured areas show the large extent of the alaskite batholith on the west, and the location of the smaller batholith on the east flank of the syncline at Berlin.