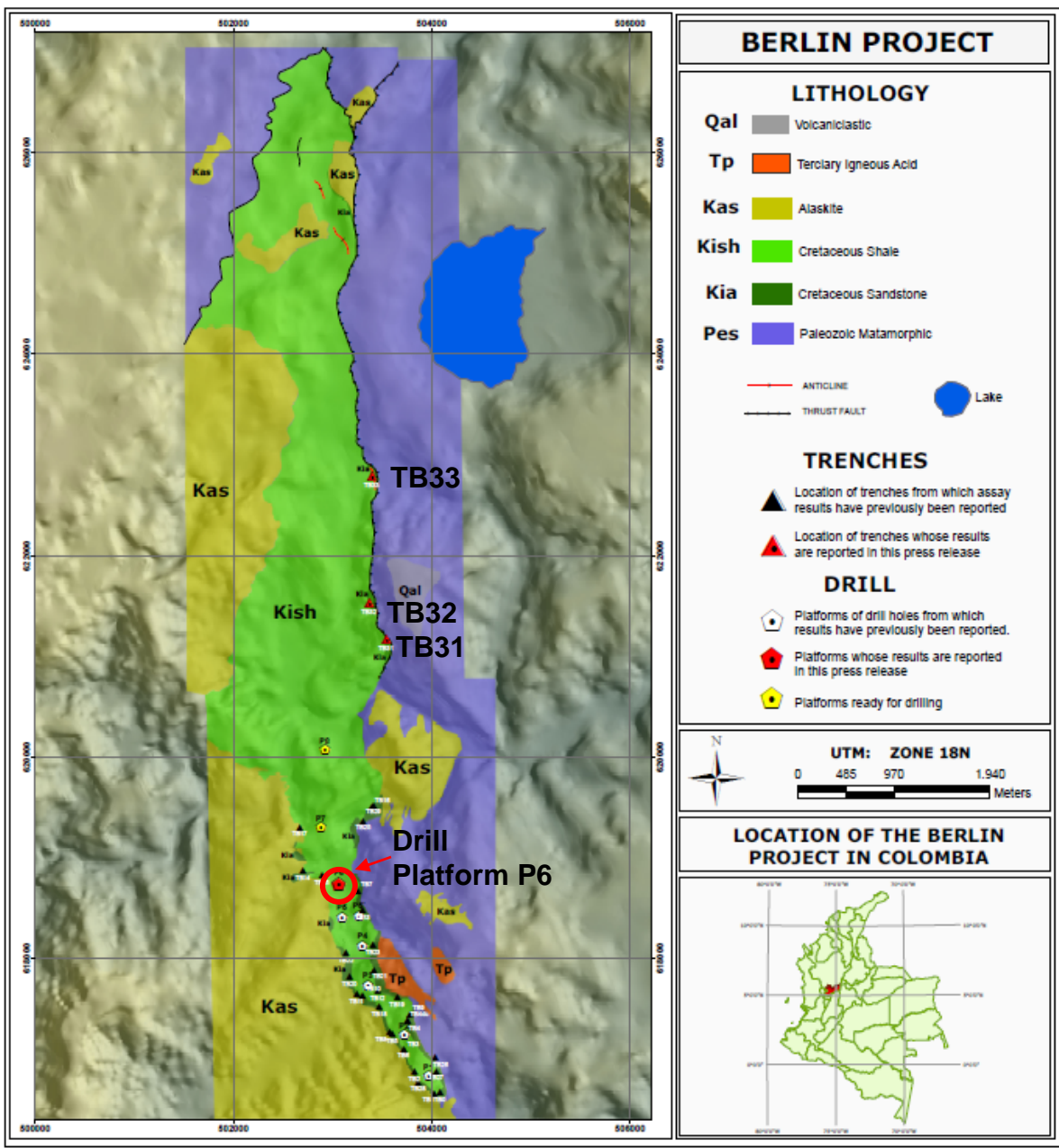


**Figure 1 – Map Shows the Location of Trenches and Drill Platforms in the Berlin Project**



Geological map of the 10.5km long syncline in Cretaceous strata (green shades) in the Berlin Project. The brown coloured areas show the large extent of the alaskite batholith on the west, and the location of the smaller batholith on the east flank of the syncline at Berlin. The alaskite is believed to be the source of the mineralization in the sedimentary units at Berlin. The red circle marks the location of platform P6, and the red triangles mark the location of the trenches from which assay results are reported on in this press release.