

Legend

Drilling
Type/Status

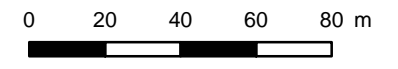
- ⊗ New Results
- ⊗ Published
- ⊗ Results Pending
- ⊗ In Progress
- ⊗ Programmed

Geology- Rio Novo
Lithology

- █ Pegmatite
- █ Metavolcanic Rock
- █ Quartz Sericite Schist - QSX
- █ Granodiorite Mylonitized
- █ Granodiorite



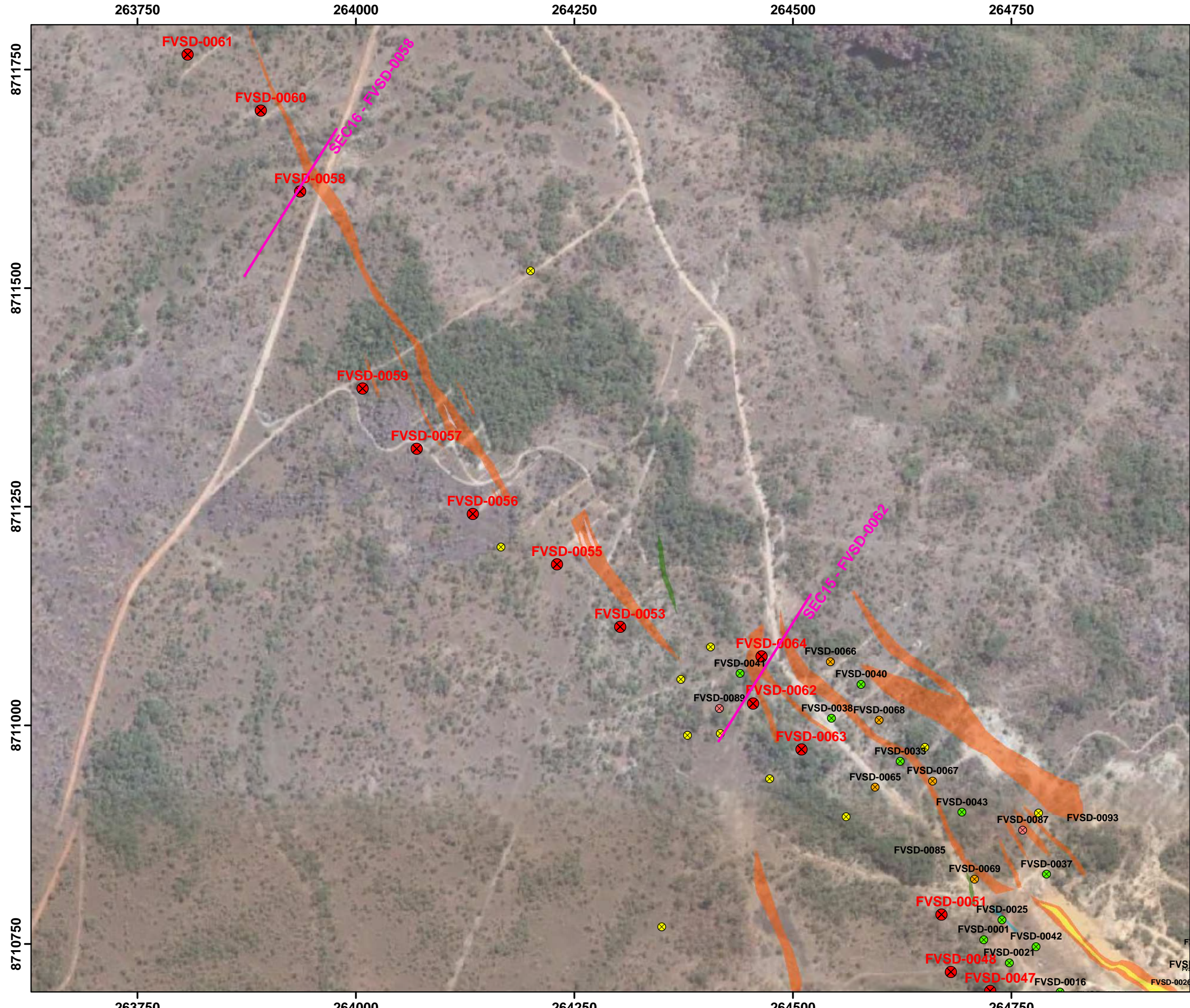
1:2,000



ALMAS PROJECT
ALMAS
TOCANTINS STATE

DRILLING AND
GEOLOGICAL MAP
VIRA SAIA TARGET

SAD69 - UTM 23S
SOURCE: RIO NOVO GOLD, ANEEL,
IBGE, ANA, CPRM
DATE: 2011/10/24




Legend

Drilling
Type/Status

- ⊗ New Results
- ⊗ Published
- ⊗ Results Pending
- ⊗ In Progress
- ⊗ Programmed

Geology- Rio Novo
Lithology

- Pegmatite
- Metavolcanic Rock
- Quartz Sericite Schist - QSX
- Granodiorite Mylonitized
- Granodiorite



Rio Novo
GOLD INC

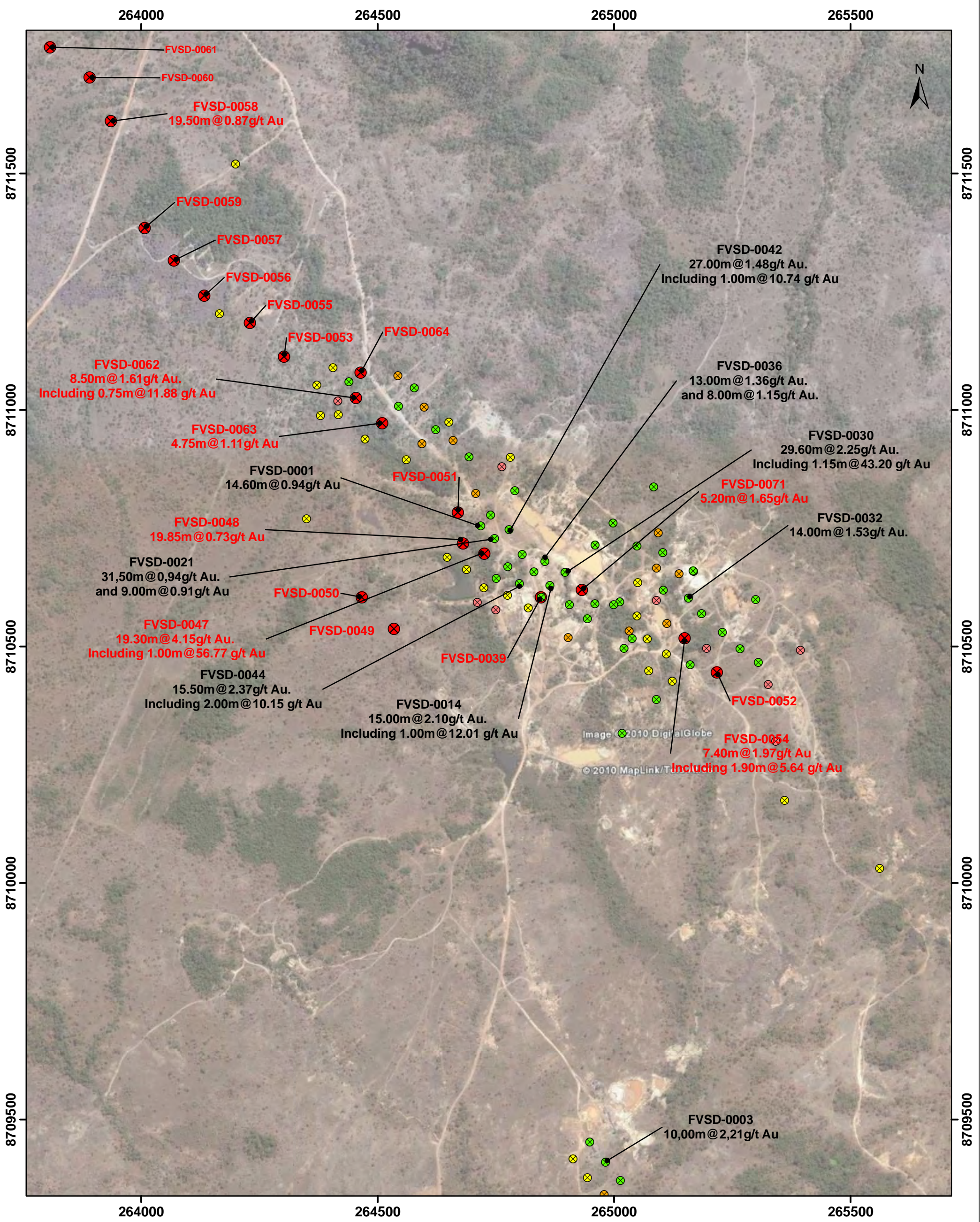
1:4,000

0 20 40 60 80 m

ALMAS PROJECT
ALMAS
TOCANTINS STATE

DRILLING AND
GEOLOGICAL MAP
VIRA SAIA TARGET

SAD69 - UTM 23S
SOURCE: RIO NOVO GOLD, ANEEL,
IBGE, ANA, CPRM
DATE: 2011/10/24

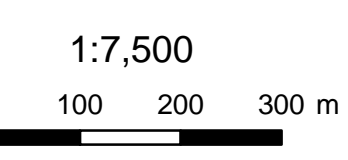


Legend

Drilling

Type/Status

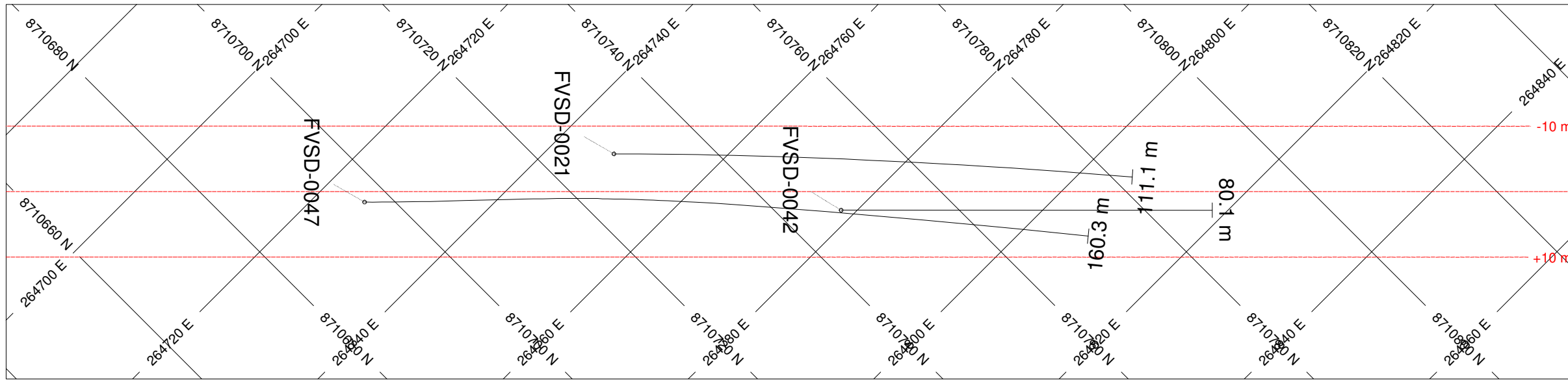
- ⊗ New Results
- ⊗ Published
- ⊗ Results Pending
- ⊗ In Progress
- ⊗ Programmed



**ALMAS PROJECT
ALMAS
TOCANTINS STATE**

DRILLING AND
GOOGLE EARTH MAP
VIRA SAIA TARGET

SAD69 - UTM 23S
SOURCE: RIO NOVO GOLD, ANEEL,
IBGE, ANA, CPRM
DATE: 2011/10/24

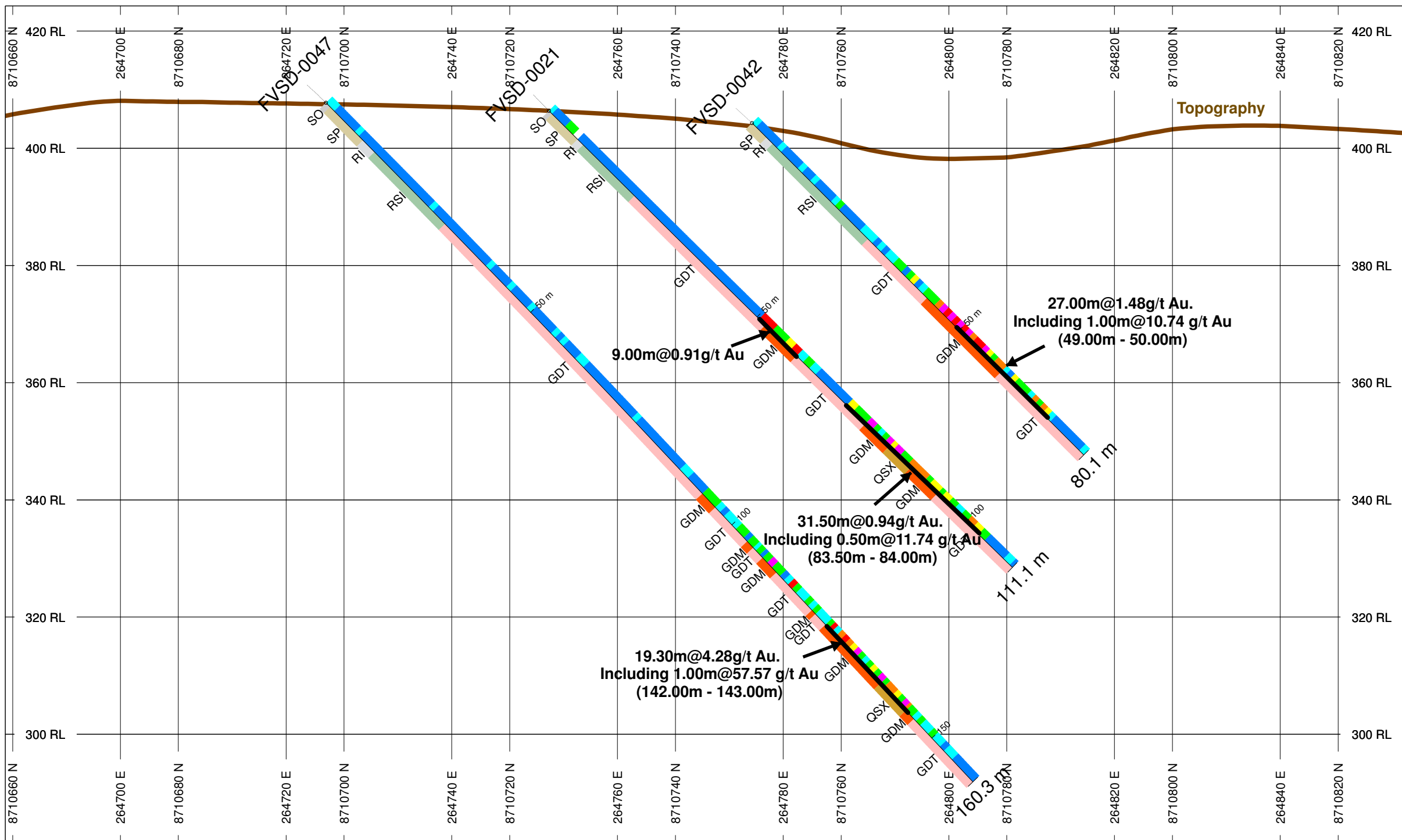


HOLES PLOTTED

TOTAL 3

FVSD-0021 FVSD-0042 FVSD-0047

**SECTION-08 FVSD-0047
VIRA SAIA TARGET
ALMAS PROJECT**



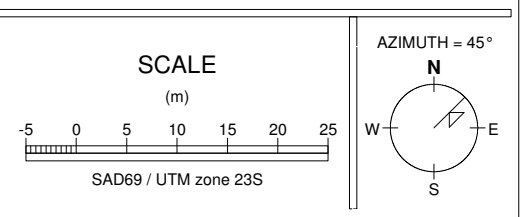
NUMBER BANDS	L/R	COL	RANGE
AU_PPM	R		
			3
			1
			0.5
			0.3
			0.05
			0.005
			0

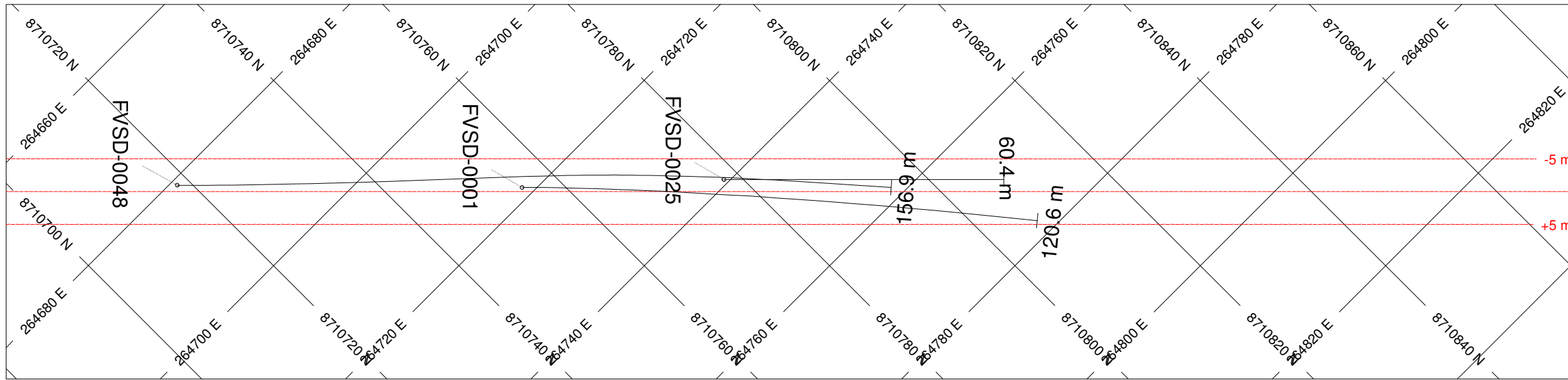
ROCK CODES	PAT	LABEL	DESCRIPTION
Rock_Code		SO	Soil
		SP	Saprolite
		RI	Weathered Rock
		QSX	Quartz-Sericite Schist
		RSI	Semi Weathered Rock
		GDM	Mylonite Granodiorite
		GDT	Granodiorite

POSTED TEXT	L/R	TEXT	ITEMS
Rock_Code	L	-----	All

SECTION SPECS:

REF. PT. E, N	264771 m	8710744 m
EXTENTS	240.1 m	143 m
SECTION TOP, BOT	424.3 m	281.3 m
TOLERANCE +/-	10 m	



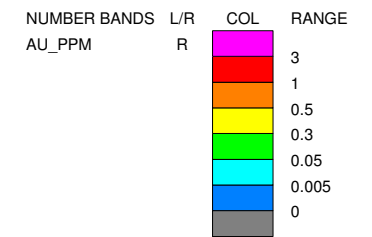
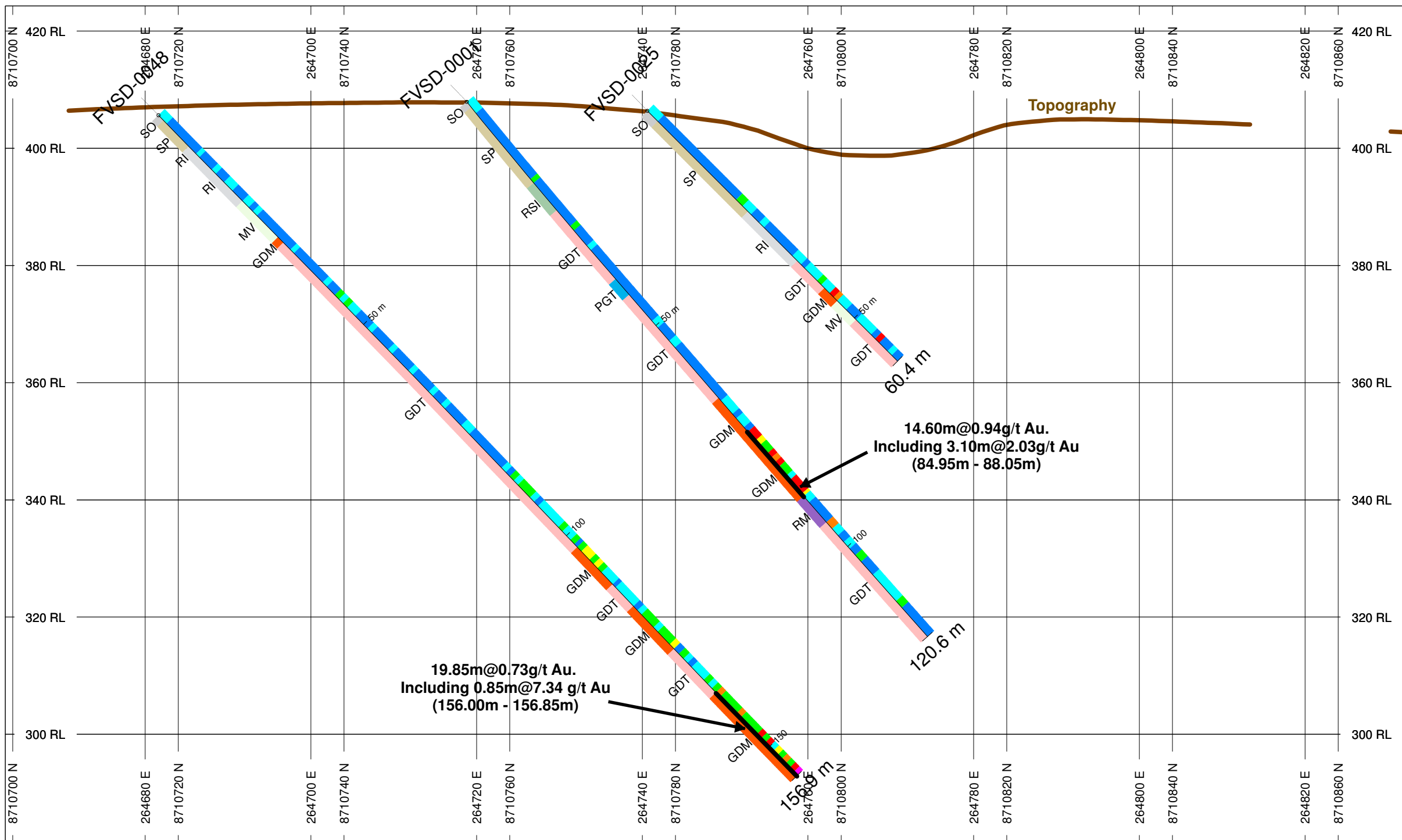


HOLES PLOTTED

TOTAL 3

FVSD-0001 FVSD-0025 FVSD-0048

**SECTION-01 FVSD-0048
VIRA SAIA TARGET
ALMAS PROJECT**

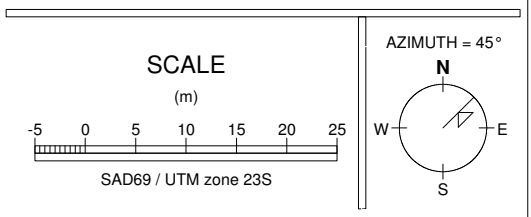


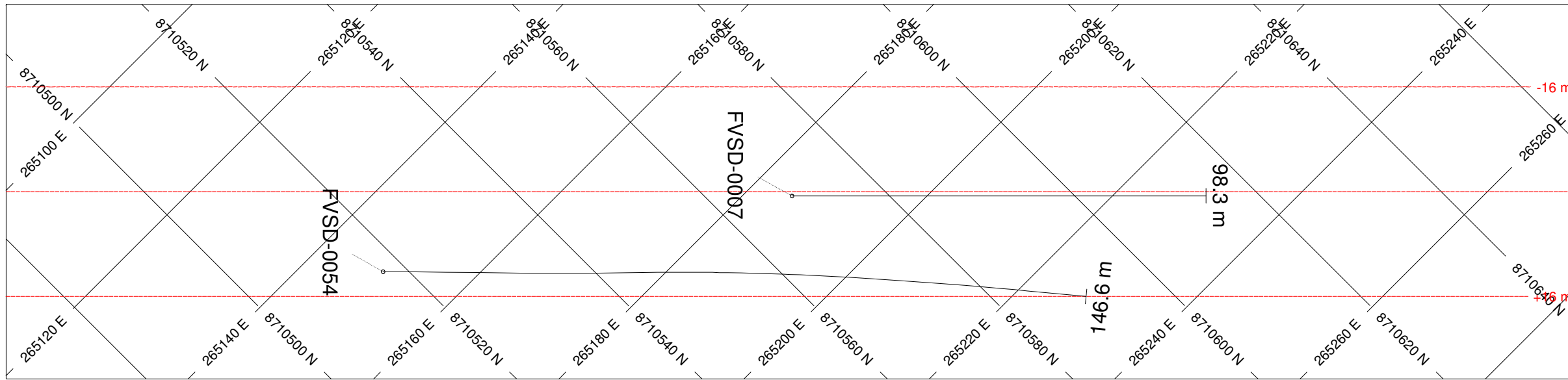
ROCK CODES	PAT	LABEL	DESCRIPTION
Rock_Code	[Color]	SO	Soil
	[Color]	SP	Saprolite
	[Color]	RI	Weathered Rock
	[Color]	MV	Meta-Volcanic
	[Color]	RSI	Semi Weathered Rock
	[Color]	GDM	Milonite Granodiorite
	[Color]	RM	Mafic Rock
	[Color]	GDT	Granodiorite
	[Color]	PGT	Pegmatite Quartz Feldspar

POSTED TEXT	L/R	TEXT	ITEMS
Rock_Code	L	-----	All

SECTION SPECS:

REF. PT. E, N	264748 m	8710784 m
EXTENTS	240.1 m	143 m
SECTION TOP, BOT	424.3 m	281.3 m
TOLERANCE +/-	5 m	



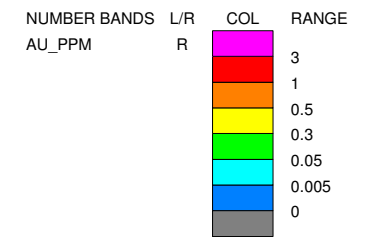
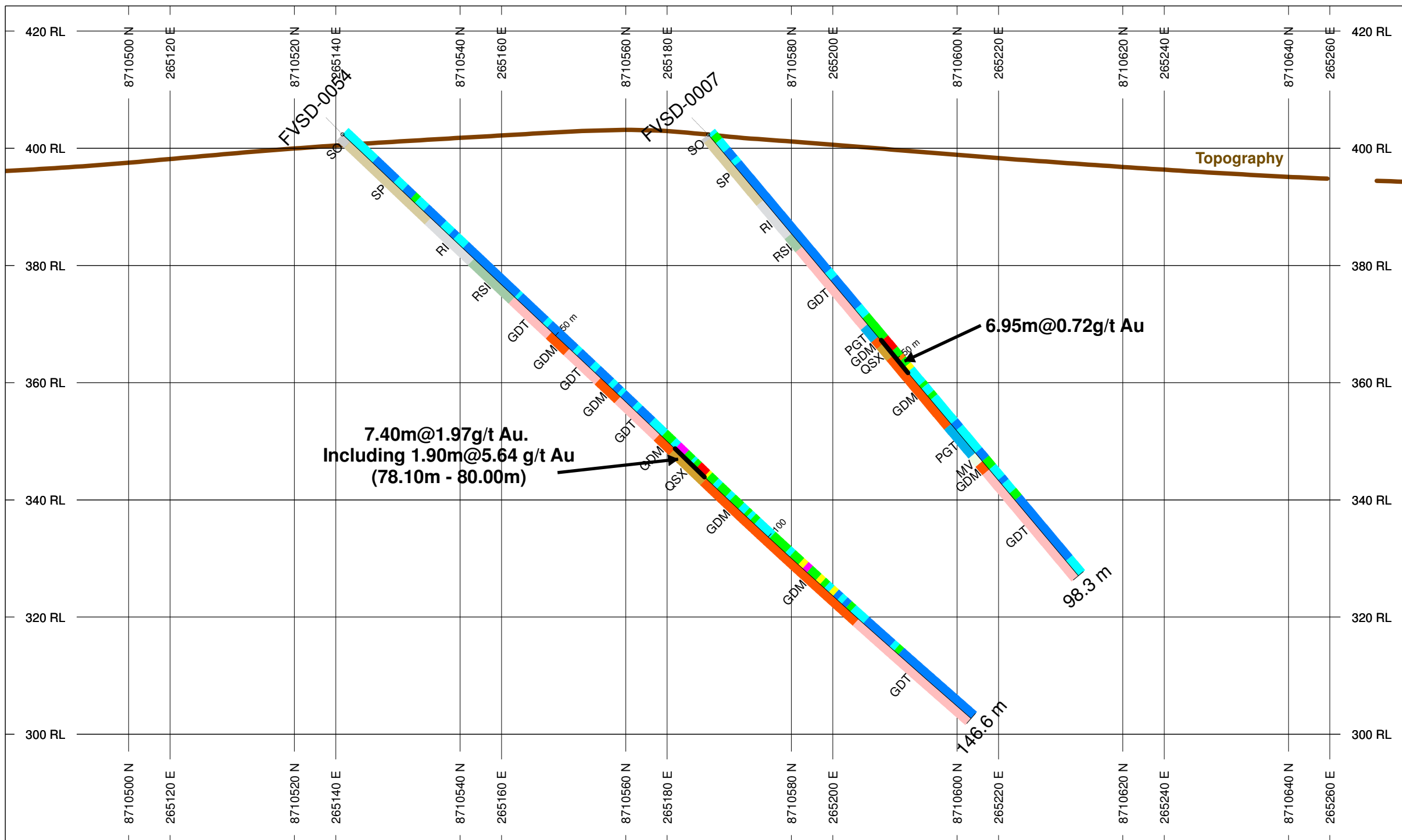


HOLES PLOTTED

TOTAL 2

FVSD-0007 FVSD-0054

**SECTION-05 FVSD-0054
VIRA SAIA TARGET
ALMAS PROJECT**

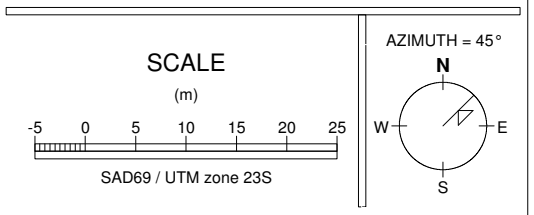


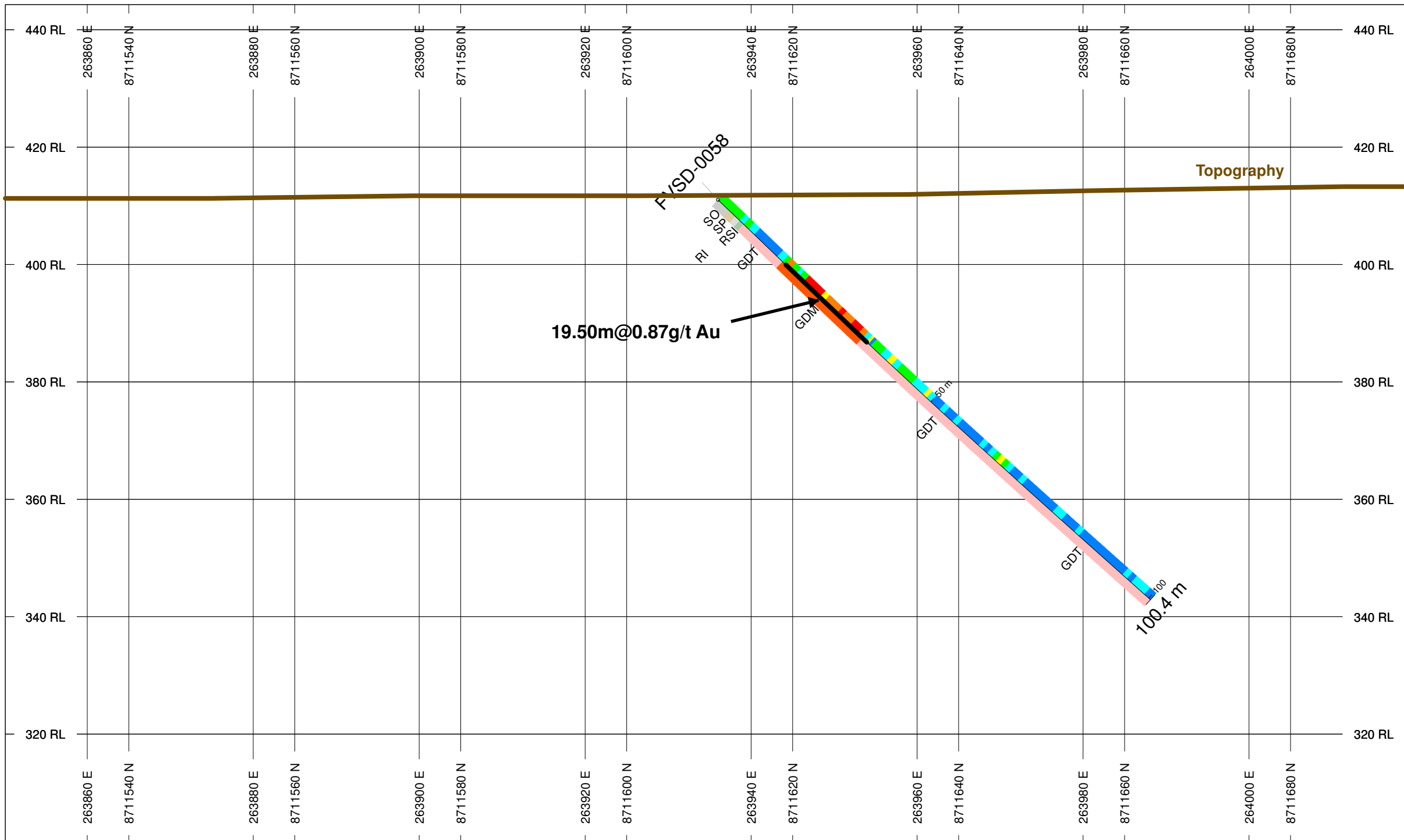
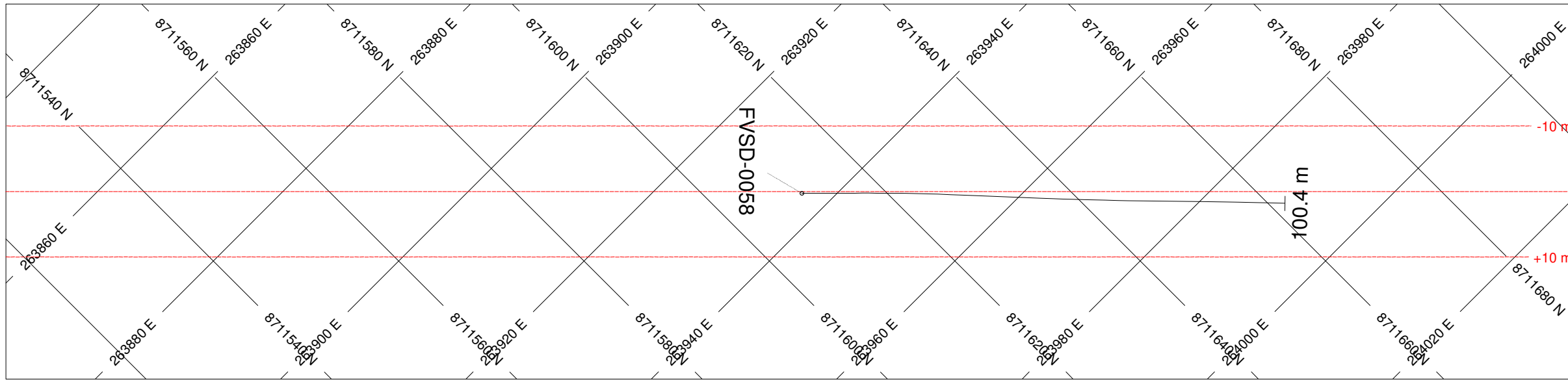
ROCK CODES	PAT	LABEL	DESCRIPTION
Rock_Code	[Color]	SO	Soil
	[Color]	SP	Saprolite
	[Color]	RI	Weathered Rock
	[Color]	QSX	Quartz-Sericite Schist
	[Color]	MV	Meta-Volcanic
	[Color]	RSI	Semi Weathered Rock
	[Color]	GDM	Milonite Granodiorite
	[Color]	GDT	Granodiorite
	[Color]	PGT	Pegmatite Quartz Feldspar

POSTED TEXT	L/R	TEXT	ITEMS
Rock_Code	L	-----	All

SECTION SPECS:

REF. PT. E, N	265185 m	8710570 m
EXTENTS	240.1 m	143 m
SECTION TOP, BOT	424.3 m	281.3 m
TOLERANCE +/-	16 m	





HOLES PLOTTED

TOTAL 1

FVSD-0058

**SECTION-16 FVSD-0058
VIRA SAIA TARGET
ALMAS PROJECT**

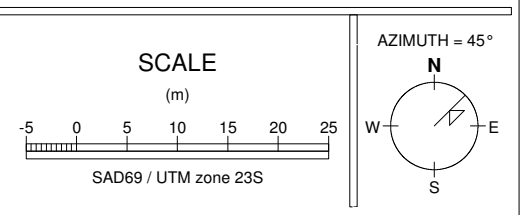
NUMBER BANDS	L/R	COL	RANGE
AU_PPM	R		
			3
			1
			0.5
			0.3
			0.05
			0.005
			0

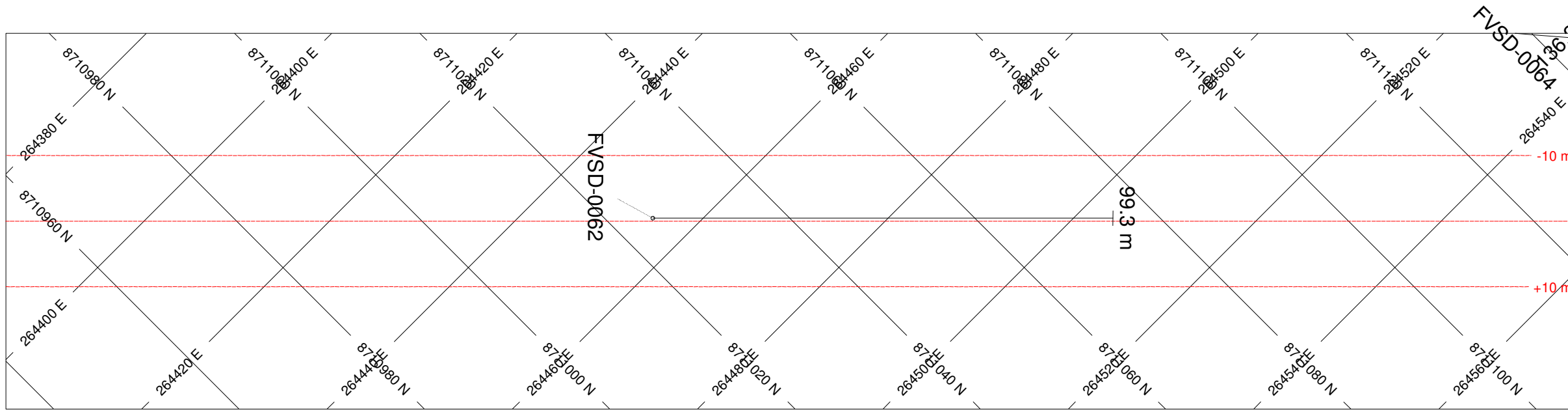
ROCK CODES	PAT	LABEL	DESCRIPTION
Rock_Code		SO	Soil
		SP	Saprolite
		RI	Weathered Rock
		RSI	Semi Weathered Rock
		GDM	Mylonite Granodiorite
		GDT	Granodiorite

POSTED TEXT	L/R	TEXT	ITEMS
Rock_Code	L	-----	All

SECTION SPECS:

REF. PT. E, N	263935 m	8711610 m
EXTENTS	240.1 m	143 m
SECTION TOP, BOT	444.3 m	301.3 m
TOLERANCE +/-	10 m	

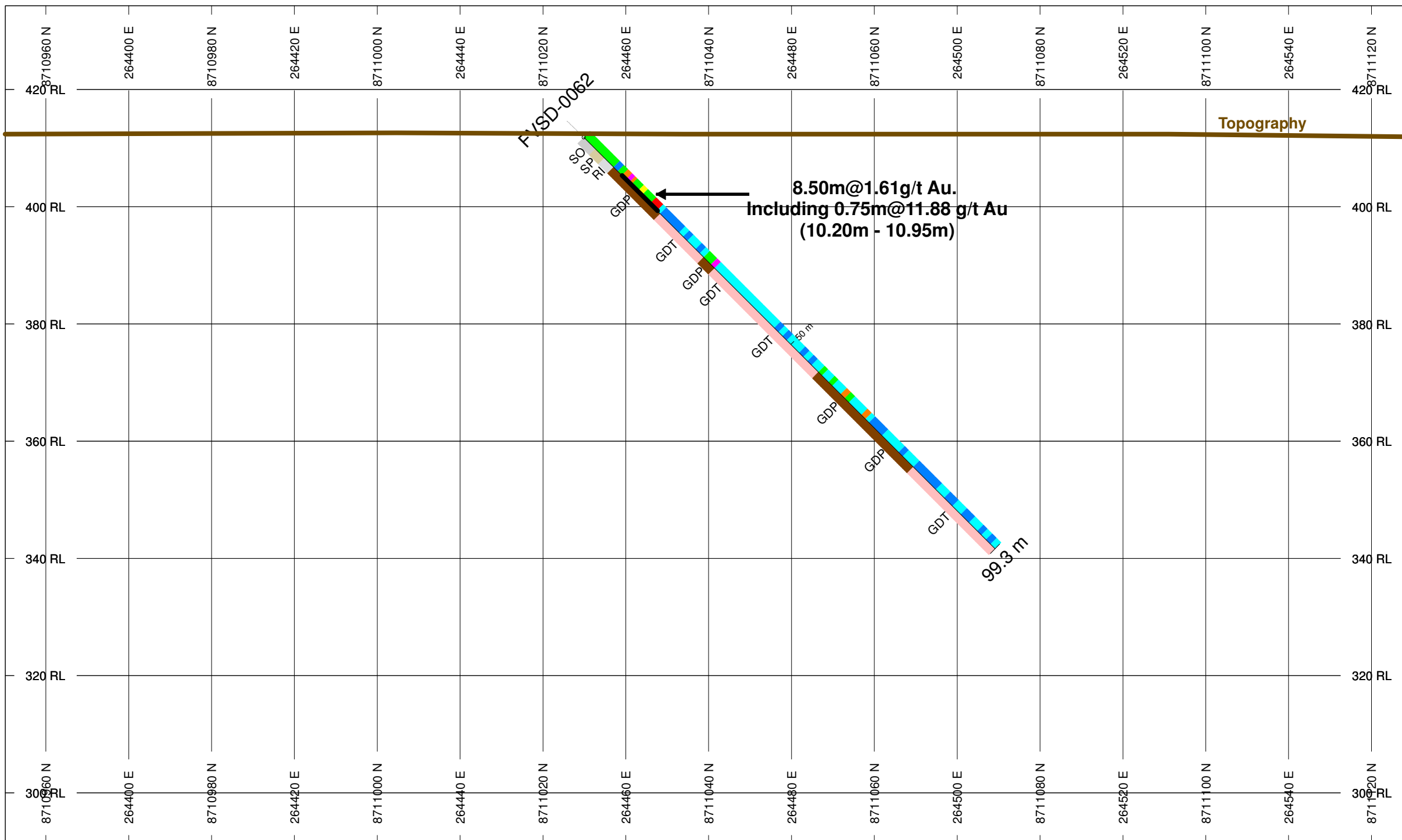




HOLES PLOTTED

TOTAL 1
FVSD-0062

**SECTION-15 FVSD-0062
VIRA SAIA TARGET
ALMAS PROJECT**



NUMBER BANDS	L/R	COL	RANGE
AU_PPM	R	[Color]	3
		[Color]	1
		[Color]	0.5
		[Color]	0.3
		[Color]	0.05
		[Color]	0.005
		[Color]	0

ROCK CODES	PAT	LABEL	DESCRIPTION
Rock_Code	[Color]	SO	Soil
	[Color]	SP	Saprolite
	[Color]	RI	Weathered Rock
	[Color]	GDT	Granodiorite
	[Color]	GDP	GDP

POSTED TEXT	L/R	TEXT	ITEMS
Rock_Code	L	-----	All

SECTION SPECS:

REF. PT. E, N	264470 m	8711040 m
EXTENTS	240.1 m	143.1 m
SECTION TOP, BOT	434.3 m	291.2 m
TOLERANCE +/-	10 m	

