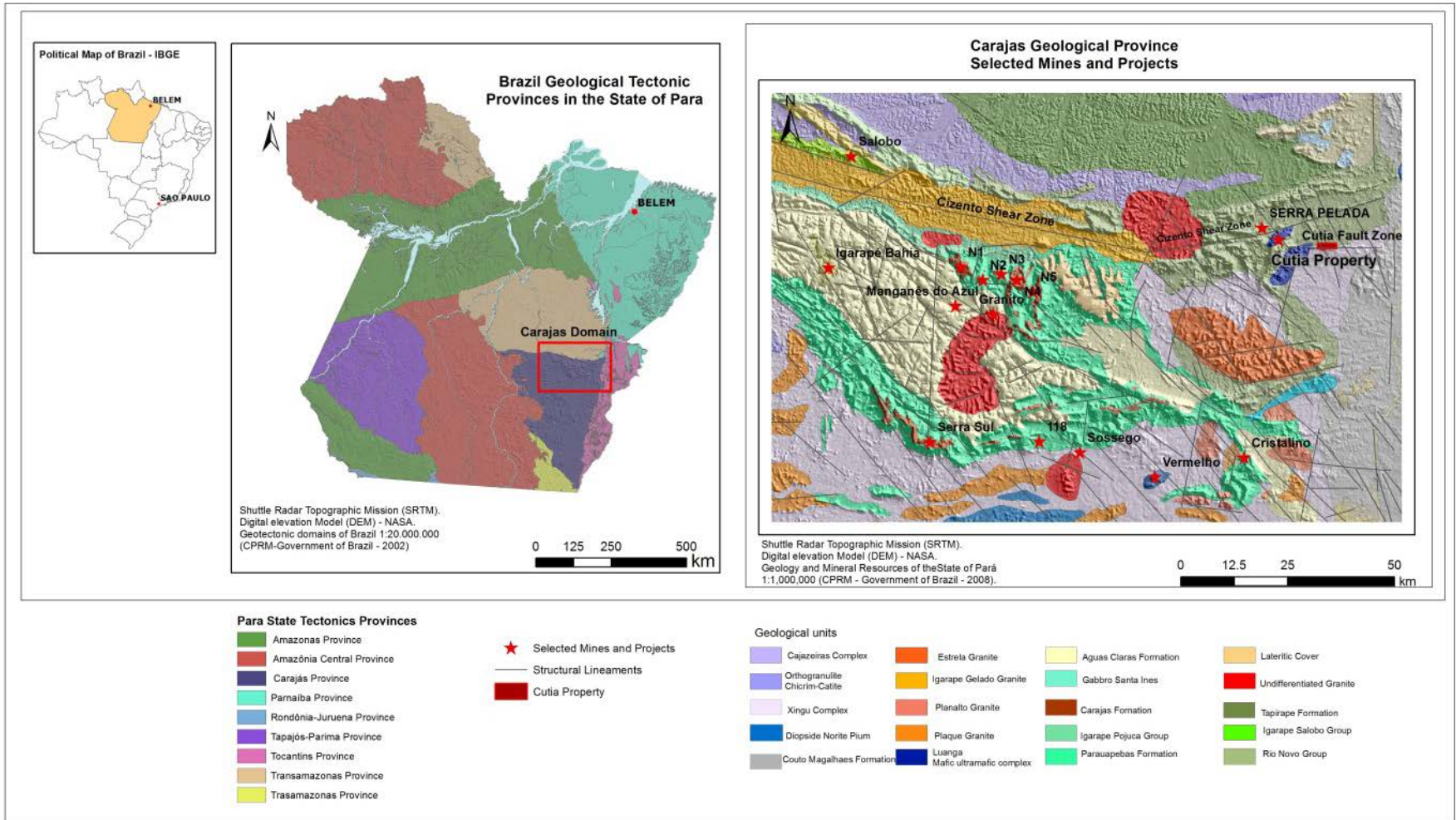
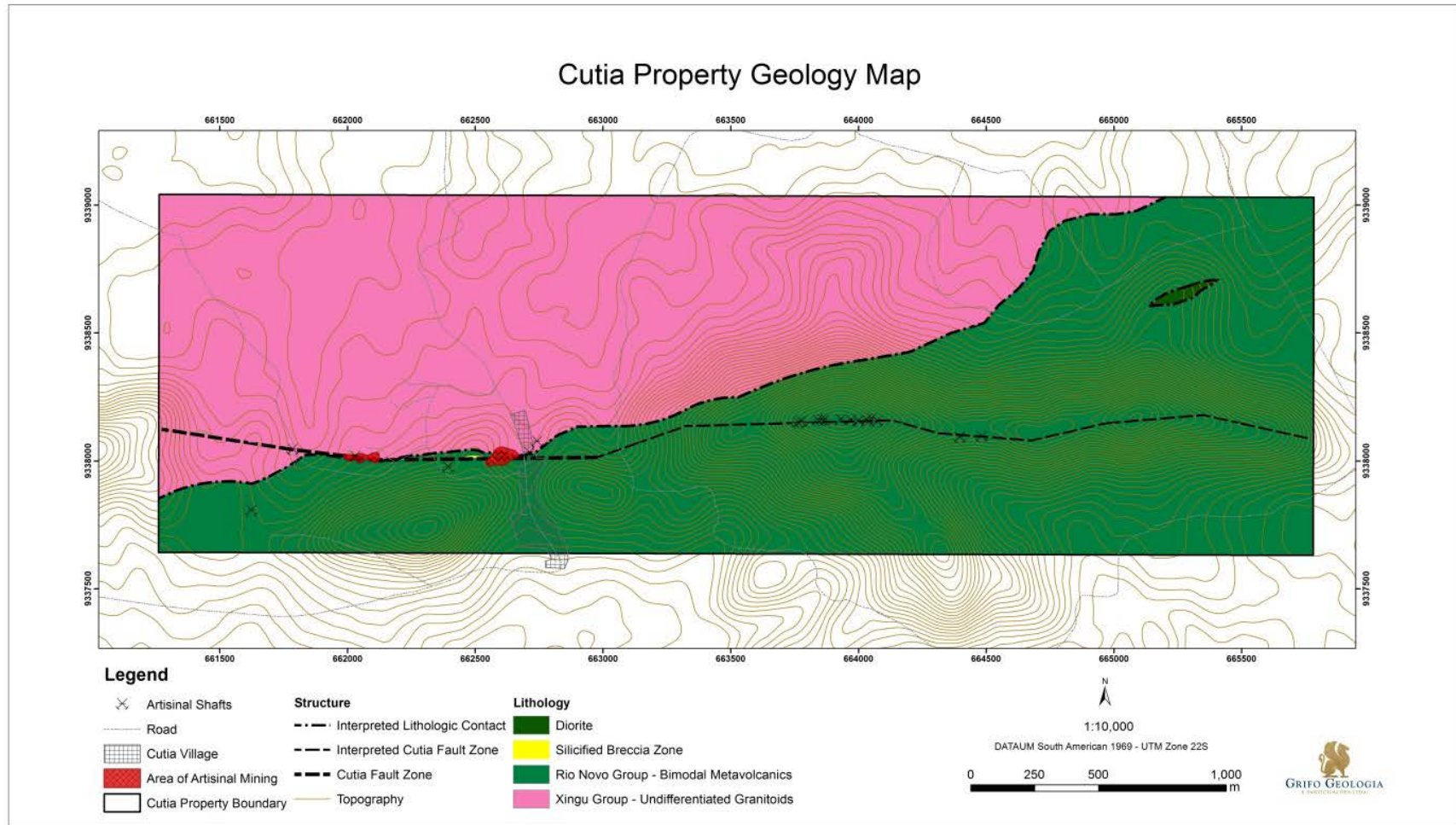


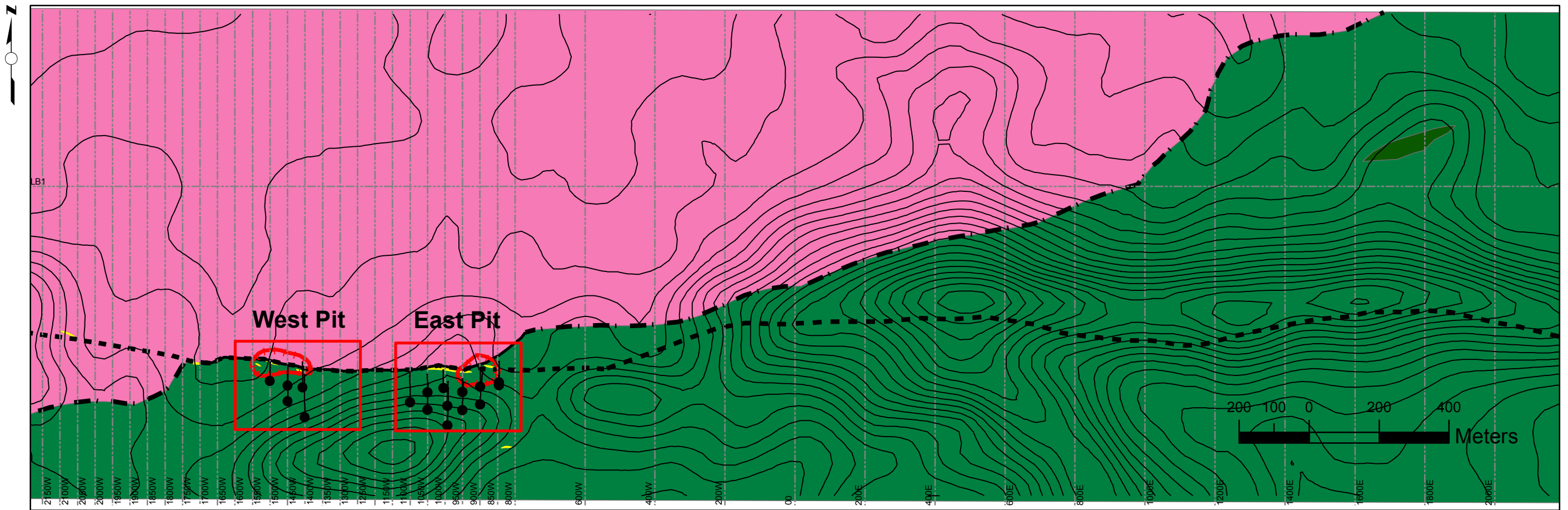
Map 1. Pará, Brazil with emphasis on the Carajás Geological Province



Map 2. Cutia Property Geology Map



Cutia Property Diamond Drill Hole Location Map

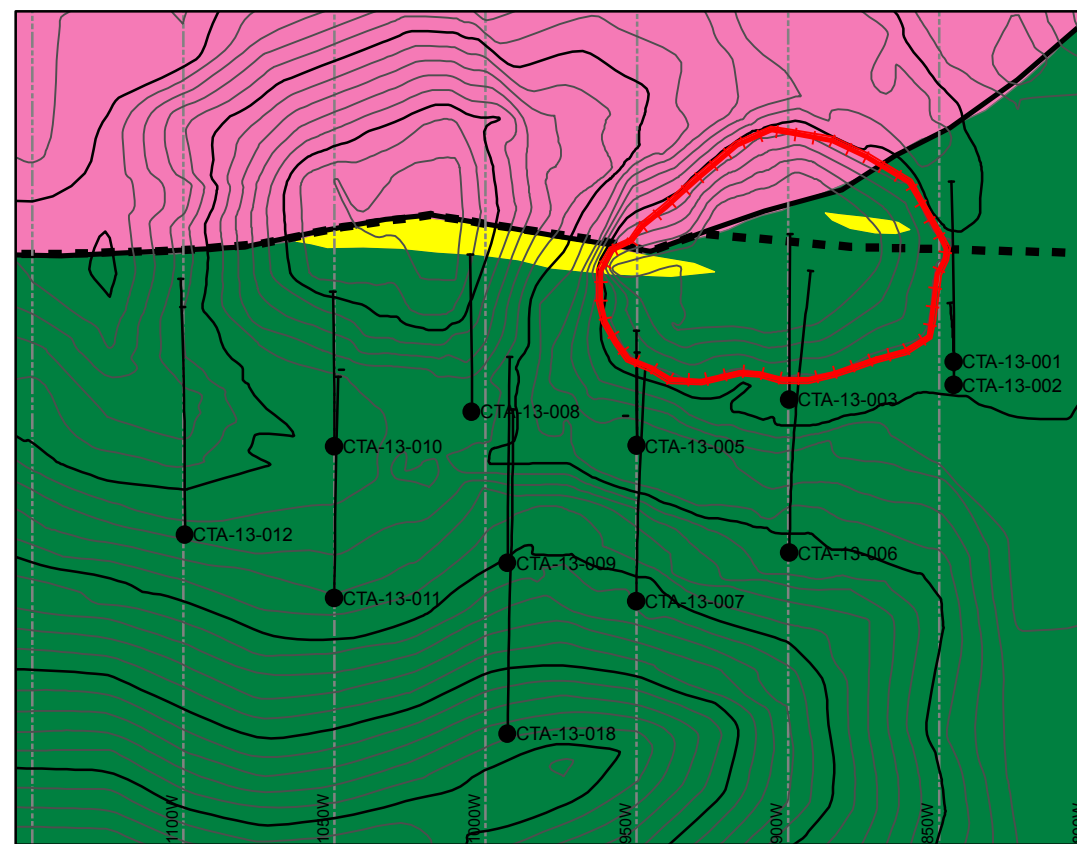
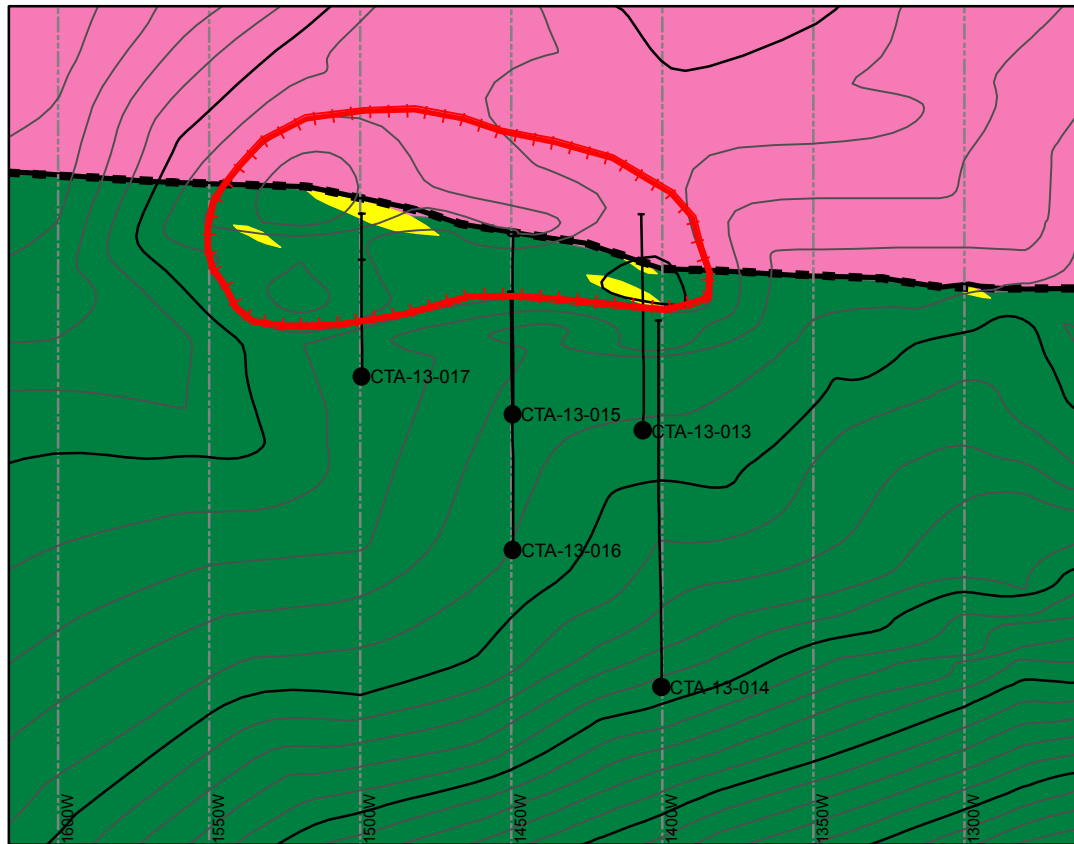


West Pit

East Pit

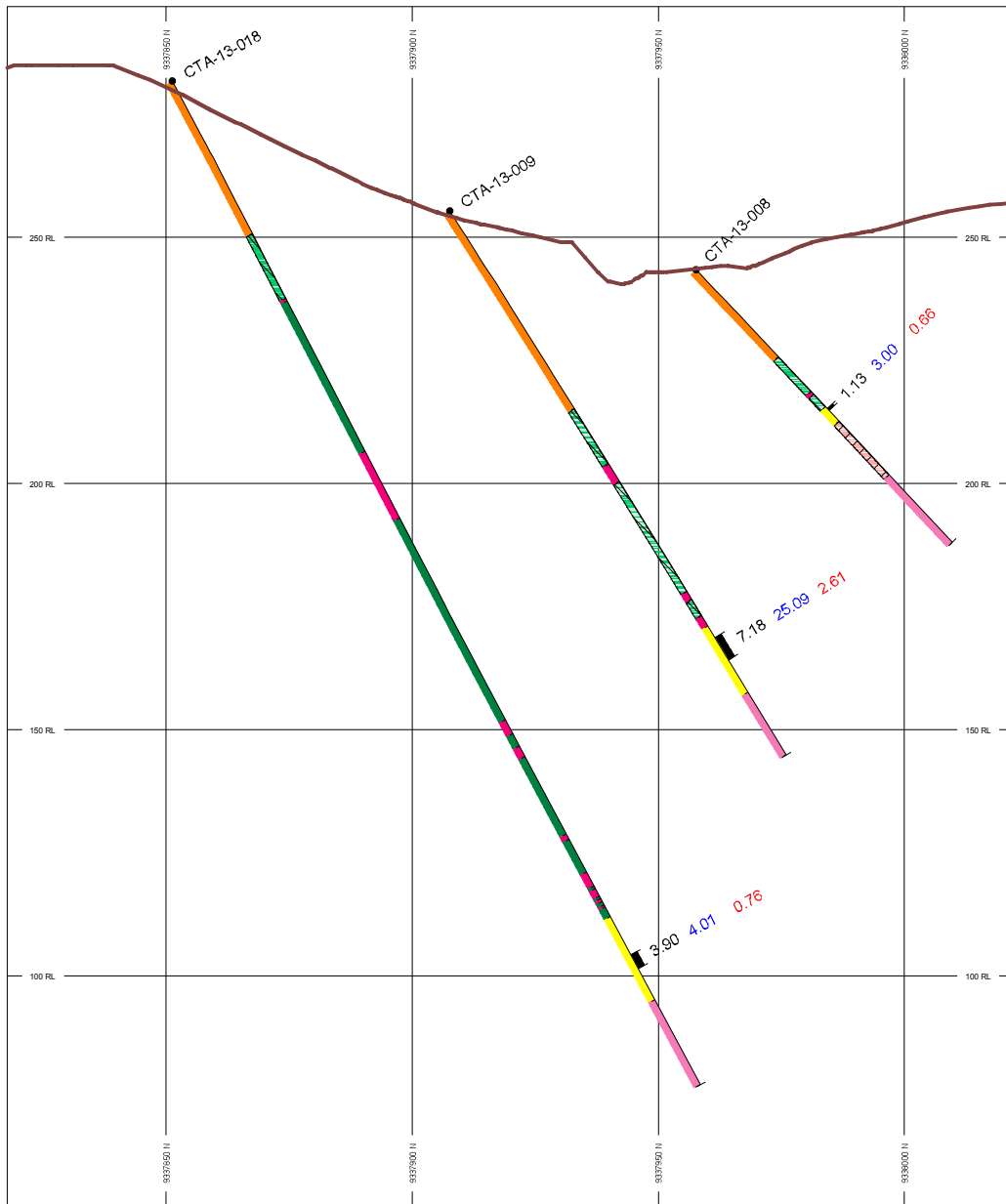
Legend

- Current Drilling**
 - Drillhole completed
 - Drillhole trace
- Topography**
 - ~ Primary lines
 - ~ Secondary lines
 - - - Section grid
- Artisanal works**
 - contour pit (garimpeiros work)
- Artisanal works**
 - Diorite
 - Silicified Breccia Zone
 - Rio Novo Group - Bimodal Metavolcanics
 - Xingu Group - Undifferentiated Granitoids
- Geological structures**
 - Defined lithological contact
 - · - Inferred lithological contact
 - - - Cutia Fault Zone - CFZ



50 25 0 50 Meters
1:2,500

50 25 0 50 Meters
1:2,500



HOLES PLOTTED

TOTAL 3

CTA-13-008

CTA-13-009

CTA-13-018

TOPOGRAPHY

— Contour line

■ Composite Interval

ROCK CODES

ROCK CODES	DESCRIPTION
FDK	Felsic Dyke
DIA	Mafic/Diabase Dyke
GRD	Granodiorite
SMVS	Saprolite of MVS
MVS	Metavolcanics
SAP	Saprolite
VEI	Silicified Zone
QFP	Quartz Feldspar Porphyry

ASSAYS

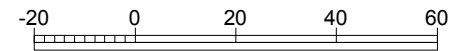
Au - grams/tonne

Ag - grams/tonne

Cu - %

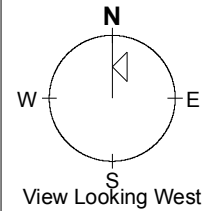
SCALE 1 : 1500

(m)



SAD69 / UTM zone 22S

AZIMUTH = 0°

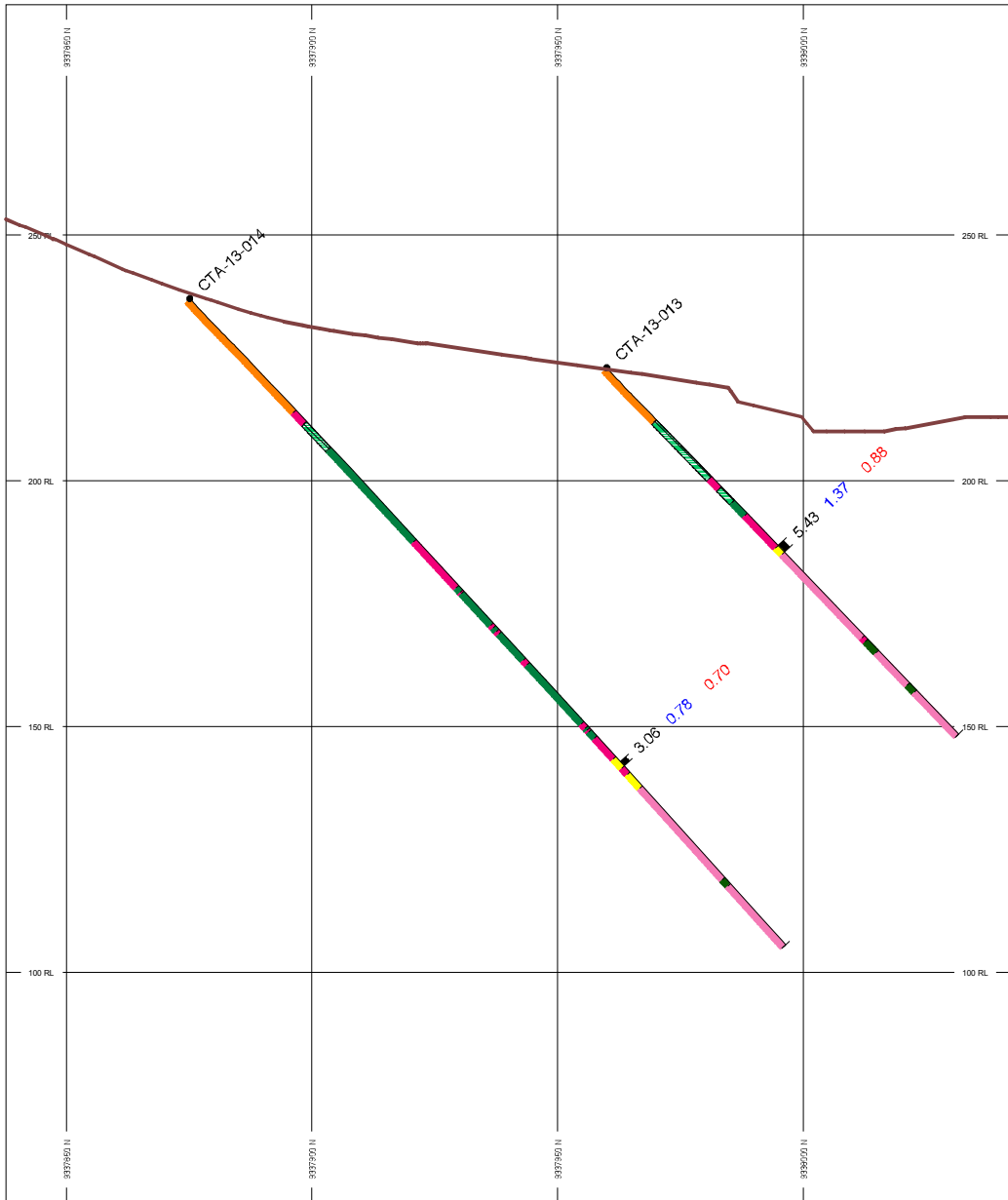


Colossus Minerals Inc.

Cutia Project

2013 Diamond Drilling Campaign

Section 1000W



HOLES PLOTTED

TOTAL 2

CTA-13-013 CTA-13-014

TOPOGRAPHY

— Contour line

■ Composite Interval

ROCK CODES DESCRIPTION

FDK	Felsic Dyke
DIA	Mafic/Diabase Dyke
GRD	Granodiorite
SMVS	Saprolite of MVS
MVS	Metavolcanics
SAP	Saprolite
VEI	Silicified Zone
QFP	Quartz Feldspar Porphyry

ASSAYS

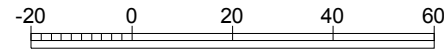
Au - grams/tonne

Ag - grams/tonne

Cu - %

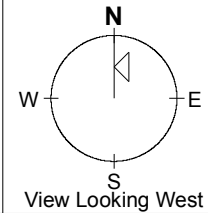
SCALE 1 : 1500

(m)



SAD69 / UTM zone 22S

AZIMUTH = 0°



Colossus Minerals Inc.

Cutia Project

2013 Diamond Drilling Campaign

Section 1400W