

Figure 1 – Eagle and Eagle East long section showing exploration drill hole traces and the route of the proposed ramp to Eagle East

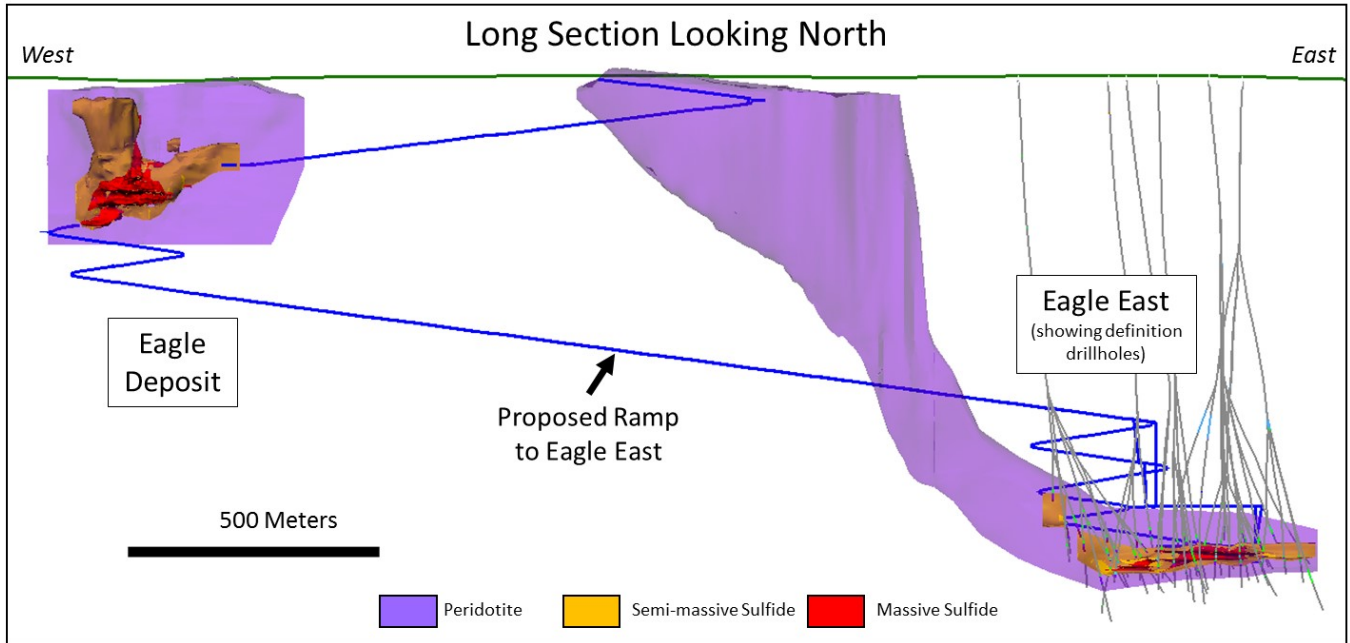
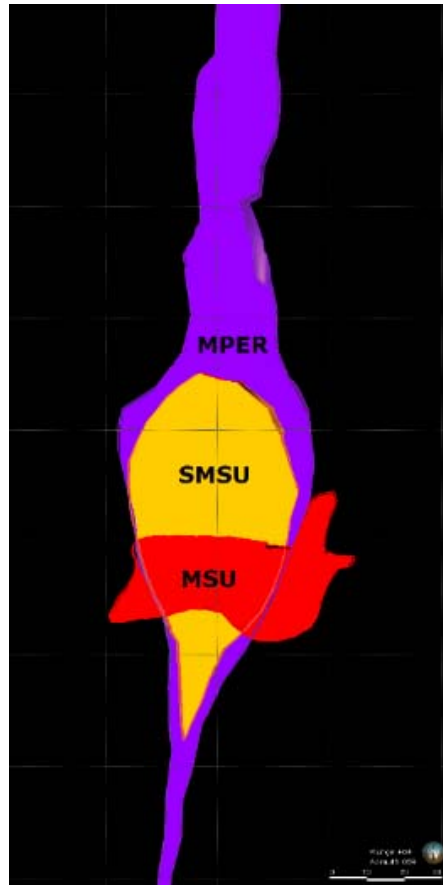
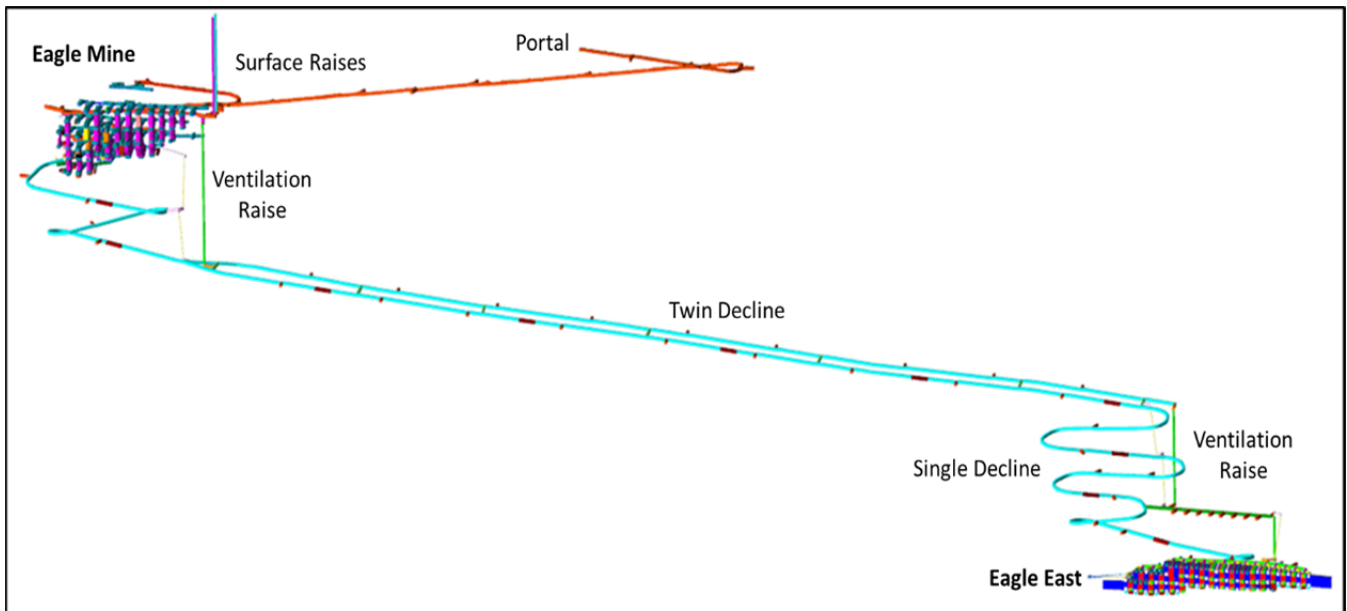


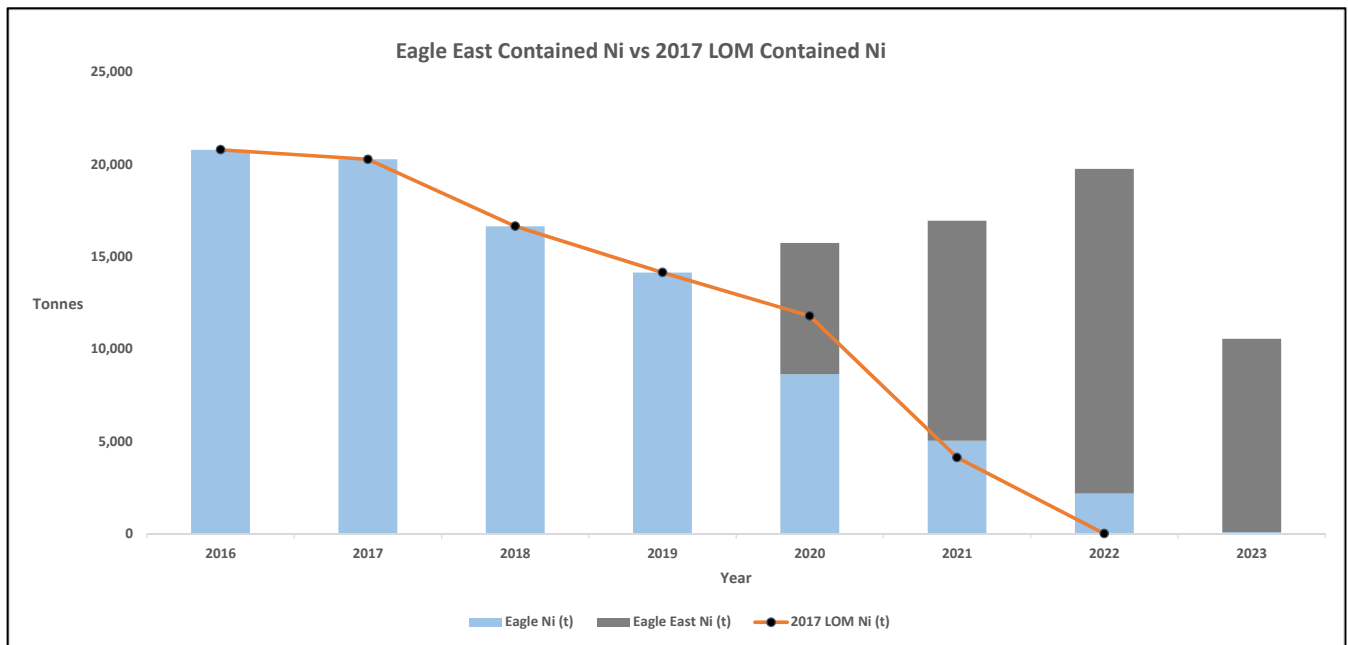
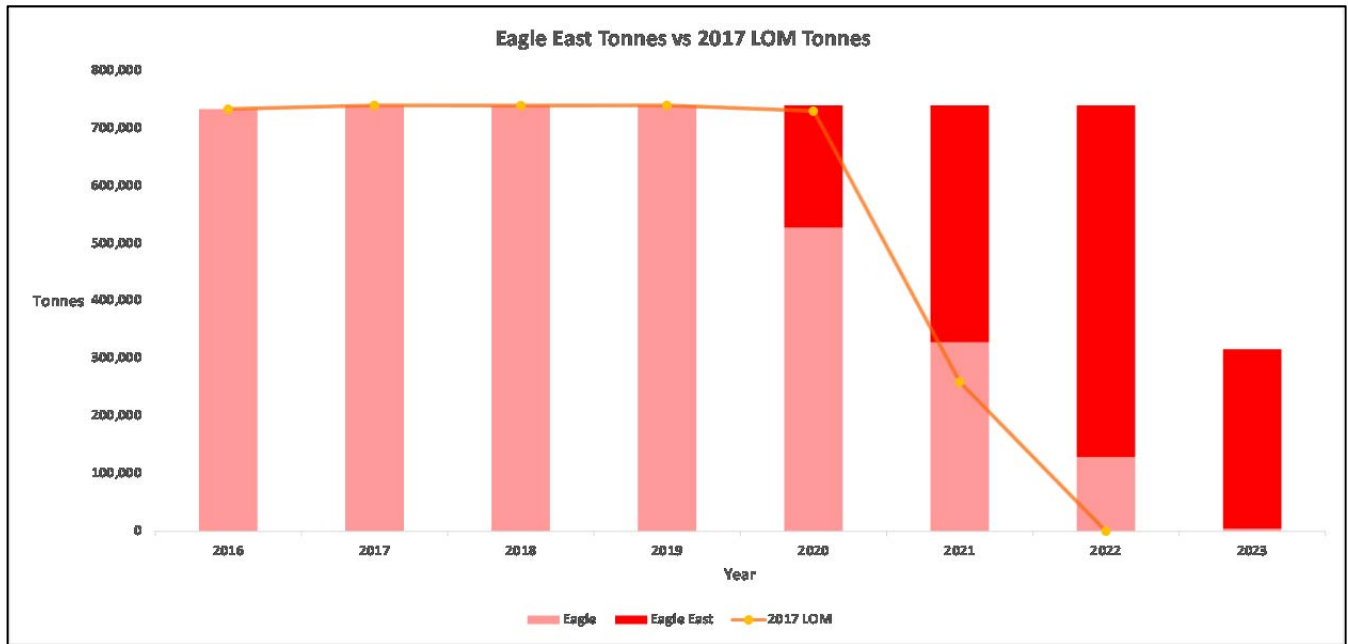
Figure 2 – Eagle East typical cross section showing massive (MSU) and semi-massive sulphide (SMSU) mineralization and the peridotite (MPER)



**Figure 3 – Schematic looking north showing Eagle and Eagle East with the proposed twin ramp access making use of the existing Eagle mine infrastructure**



**Figure 4 – Combined Eagle East and Eagle Mineral Reserve estimate mine production plan and contained nickel and copper metal produced in concentrate compared to the current Eagle Mine Life of Mine plan**



Eagle East Contained Cu vs 2017 LOM Contained Cu

