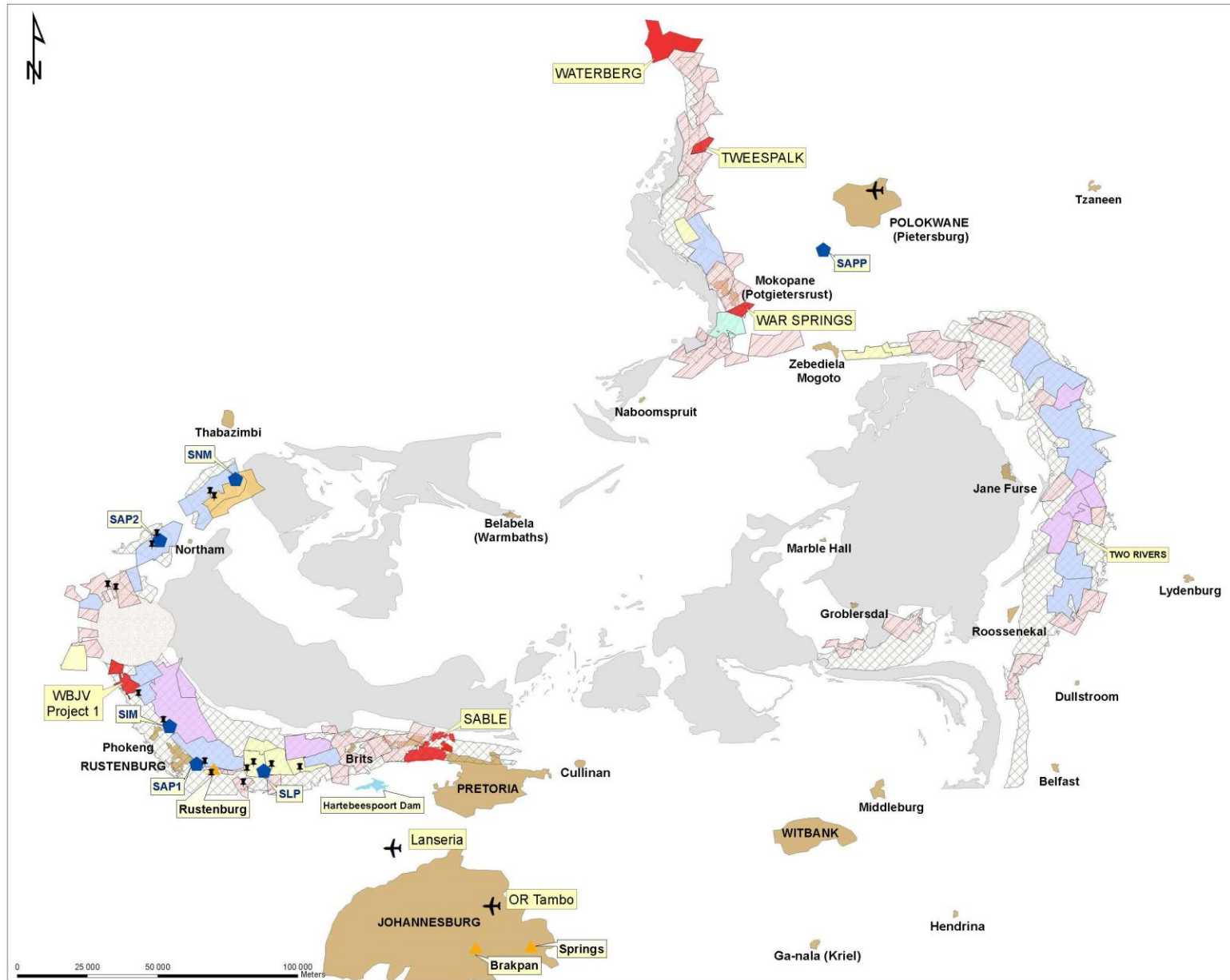


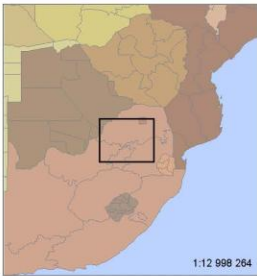
PLATINUM GROUP METALS (RSA) (Pty) LIMITED



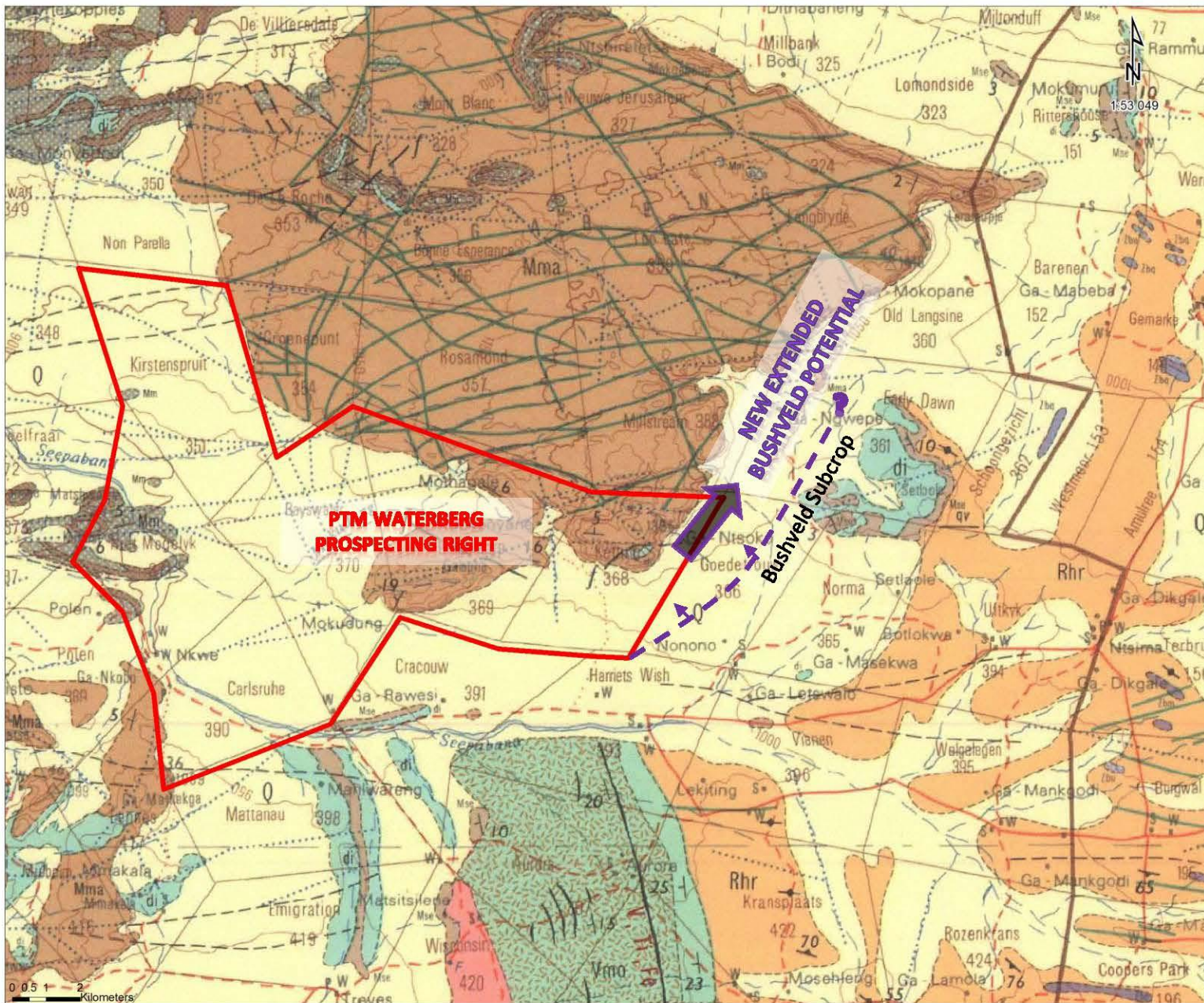
Regional Orientation

PLATINUM GROUP METALS
FIG. 1000 - PGM 1000
 Platinum Group Metals (RSA) (Pty) Limited is a wholly owned subsidiary of Platinum Group Limited, a public company listed on the Toronto Stock Exchange.

- Legend**
- Smelters
 - Concentrators
 - Refineries
 - Airports
 - Waterberg_Boundary
 - Others Misc
- Mine Boundaries (Total BIC)**
- AFRICAN RAINBOW MINERALS
 - PLATINUM GROUP METALS
 - CALEDONIA
 - ANGLO AMERICAN PLC
 - IMPALA PLATINUM LIMITED
 - LONMIN PLC
 - NORTHAM PLATINUM
 - PAN PALLADIUM
 - RANDGOLD
- Holding Co.**
- Acid Phase
 - Critical Zone
 - Hartebeespoort dam
 - Pilanesburg_Alkali_Complex
- General Stratigraphy**
- Strat
- Acid Phase
 - Critical Zone
 - Hartebeespoort dam
 - Pilanesburg_Alkali_Complex




Platinum Group Metals (RSA) (Pty) Limited
 Subsidiary of Platinum Group Metals Limited (Canada)
 Listed PSM: TSX
 Technology House
 Greenway Office Park
 Midway park
 Johannesburg 2129
 Postnet Suite No. 81
 Private Bag 112
 Roossenekal 2729
 +27 (0)11 7523186 phone
 +27 (0)11 7523438 fax
 +27 (0)11 924216872 mobile

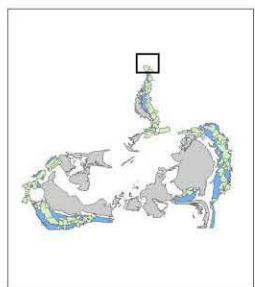


Waterberg New Extended Potential

PLATINUM GROUP METALS
 PLATINUM GROUP METALS (RSA) (Pty) Limited
 is a wholly owned subsidiary of Platinum Group Limited,
 a public company listed on the Toronto Stock Exchange

Legend

 Waterberg_Boundary



3D Perspective View of the Waterberg Geology Looking North

